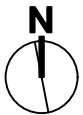


- MATERIAL NOTES**
- 1. ALL WORK TO CONFORM TO CURRENT CITY OF WINNIPEG STANDARD CONSTRUCTION SPECIFICATIONS AND DETAILS UNLESS OTHERWISE NOTED.
  - 2. DIMENSIONS ARE IN METERS UNLESS OTHERWISE NOTED.
  - 3. DO NOT SCALE DRAWING.
  - 4. PROTECT EXISTING TREES TO REMAIN, TYP.
  - 5. ALL EXCAVATION, FILL AND GRADING NECESSARY TO ACHIEVE POSITIVE DRAINAGE AND FINISHED GRADE OF POURED IN PLACE RUBBER SURFACING SHALL BE CONSIDERED INCIDENTAL TO THE WORK.

- LEGEND**
- 1 SUPPLY AND INSTALL POURED IN PLACE RUBBER SAFETY SURFACING TO COMPLY WITH CSA, CONSUMER PRODUCT SAFETY COMMISSION (CPSC) AND ASTM 1292-99 STANDARDS FOR PLAYGROUND SURFACING IMPACT ATTENUATION OF MIN FALL HEIGHT OF 4'0. PREPARE AND INSTALL BASE AS PER CITY OF WINNIPEG STANDARDS AND MANUFACTURERS SPECIFICATIONS (117 SM)
  - 2 SUPPLY AND INSTALL TOPSOIL AND SOD (GREEN AREA, 15 SM)



CONTRACTOR TO CONFIRM ALL DIMENSIONS AND REPORT ANY DISCREPANCIES TO CONTRACT ADMINISTRATOR PRIOR TO CONSTRUCTION. LOCATION OF UNDERGROUND STRUCTURES AS SHOWN ARE BASED ON THE BEST INFORMATION AVAILABLE BUT NO GUARANTEE IS GIVEN THAT ALL EXISTING UTILITIES ARE SHOWN OR THAT THE GIVEN LOCATIONS ARE EXACT. CONFIRMATION OF EXISTENCE AND EXACT LOCATION OF ALL SERVICES MUST BE OBTAINED FROM THE INDIVIDUAL UTILITIES BEFORE PROCEEDING WITH CONSTRUCTION.



THE CITY OF WINNIPEG  
Planning, Property and Development Department  
Planning and Land Use Division  
Unit 15 - 30 Fort Street, Winnipeg, MB, (R3C 4X5)

DESIGNED BY	CHECKED BY	MANAGER, PARK AND OPEN SPACES	DATE
DRAWN BY MK	APPROVED BY		
HORIZ. SCALE VERT. SCALE	1:100	MANAGER, PLANNING AND LAND USE DIVISION	DATE
DATE	August 2025		

DRAWING TITLE <b>Rubber Surfing Replacement</b>	DRAWING NO. <b>C.4-I.2</b>
Materials Plan	BID OPPORTUNITY NO. <b>791-2025</b>
SITE ADDRESS 367 Ellice Ave.	