





LAYOUT NOTES

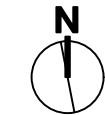
1. ALL WORK TO CONFORM TO CURRENT CITY OF WINNIPEG STANDARD CONSTRUCTION SPECIFICATIONS AND DETAILS UNLESS OTHERWISE NOTED.
2. CONTRACTOR TO VERIFY DIMENSIONS AND CONFORMANCE OF PLAY EQUIPMENT SAFETY ZONES AND REPORT ANY DISCREPANCIES TO CONTRACT ADMINISTRATOR.
3. DIMENSIONS ARE IN METERS UNLESS OTHERWISE NOTED.
4. DO NOT SCALE DRAWING.
5. GRID DATUM POINT IS CENTRE OF EXISTING PLAY EQUIPMENT - SCULPTURAL PLAY DOME.
6. GRID IS REQUIRED FOR THE LAYOUT OF THE DESIGN. GRID IS 2m X 2m.

LEGEND

-  LAYOUT GRID DATUM POINT
-  GRID GUIDELINE
-  115° ANGLE DIMENSION
-  1.5 DIMENSION

CONTRACTOR TO CONFIRM ALL DIMENSIONS AND REPORT ANY DISCREPANCIES TO CONTRACT ADMINISTRATOR PRIOR TO CONSTRUCTION. LOCATION OF UNDERGROUND STRUCTURES AS SHOWN ARE BASED ON THE BEST INFORMATION AVAILABLE BUT NO GUARANTEE IS GIVEN THAT ALL EXISTING UTILITIES ARE SHOWN OR THAT THE GIVEN LOCATIONS ARE EXACT. CONFIRMATION OF EXISTENCE AND EXACT LOCATION OF ALL SERVICES MUST BE OBTAINED FROM THE INDIVIDUAL UTILITIES BEFORE PROCEEDING WITH CONSTRUCTION.

DRAWING TITLE	DRAWING NO.
Rubber Surfacing Replacement	C.4-I.4
Layout - Graphics	BID OPPORTUNITY NO.
SITE ADDRESS 367 Ellice Ave.	791-2025



THE CITY OF WINNIPEG
Planning, Property and Development Department
Planning and Land Use Division
Unit 15 - 30 Fort Street, Winnipeg, MB, (R3C 4X5)

DESIGNED BY		CHECKED BY		MANAGER, PARK AND OPEN SPACES		DATE	
DRAWN BY MK		APPROVED BY					
HORIZ. SCALE 1:100				MANAGER, PLANNING AND LAND USE DIVISION		DATE	
VERT. SCALE							
DATE August 2025							