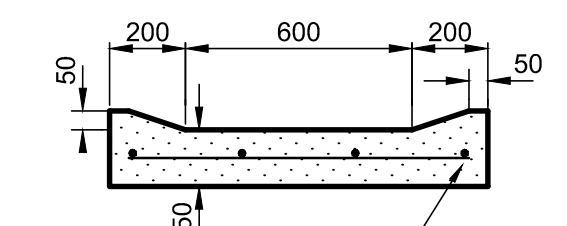


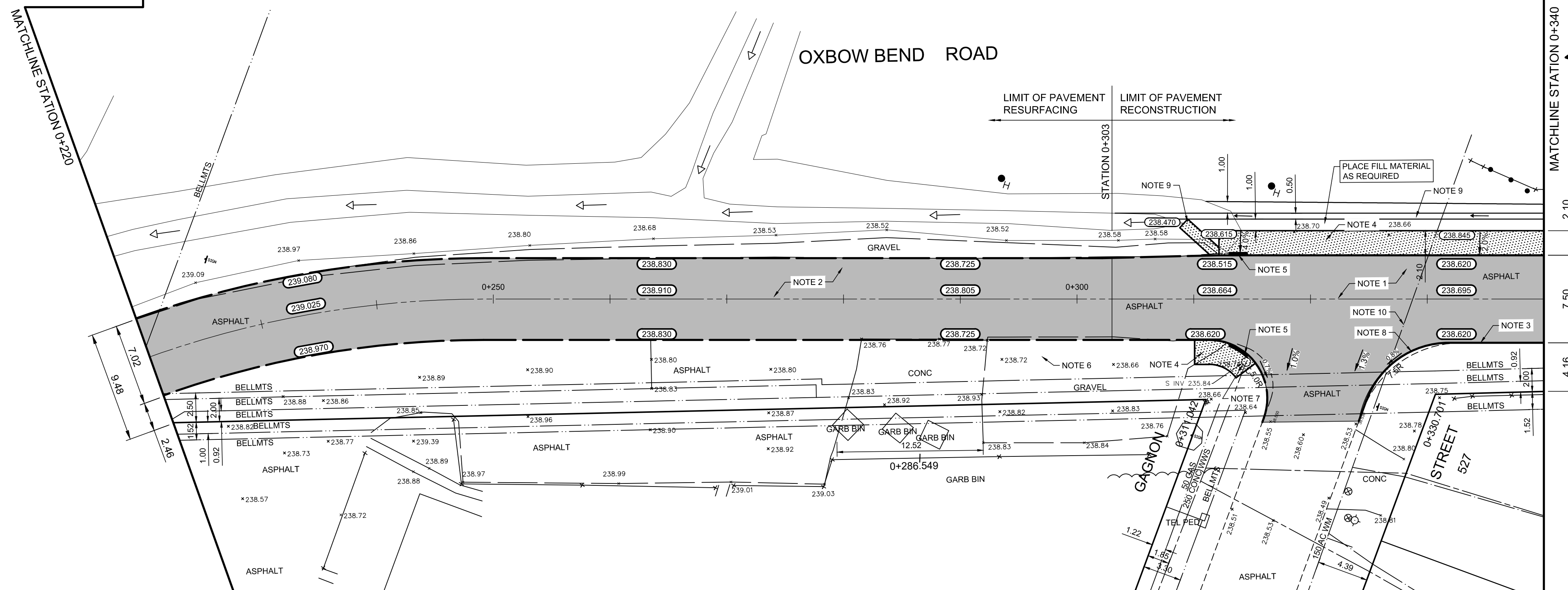
TYPICAL CROSS SECTION

Scale N.T.S.



SECTION THROUGH CONCRETE DRAINAGE SWALE

Scale N.T.S.



REFERENCE NOTES:

- PAVEMENT DIMENSIONS ARE TO BACK OF CURB
- PROPERTY LINES OBTAINED FROM CITY OF WINNIPEG L.B.I.S., AND NO SCALE FACTOR WAS APPLIED
- REFER TO AECOM FIELD BOOK NO. 5185

CONSTRUCTION NOTES:

- REMOVE EXISTING PAVEMENT AND CONSTRUCT NEW 55mm TYPE MS1 AND 70mm TYPE MS2 ASPHALT PAVEMENT
- MILL EXISTING ASPHALT PAVEMENT AND PLACE NEW ASPHALT PAVEMENT OVERLAY TYPE MS1 (150mm AVERAGE THICKNESS)
- INSTALL NEW CONCRETE BARRIER CURB AND REVERSED GUTTER FOR ASPHALT PAVEMENT (180mm HT.)
- INSTALL NEW 100mm MONOLITHIC CONCRETE CURB AND SIDEWALK
- INSTALL NEW CURB RAMP (10-12mm HT. MONOLITHIC)
- REGRADE EXISTING GRAVEL
- ADJUST EXISTING MANHOLE / CATCH BASIN / CURB INLET TO GRADE
- INSTALL NEW CONCRETE MODIFIED BARRIER CURB WITH REVERSED GUTTER FOR ASPHALT PAVEMENT (180mm HT.)
- CONSTRUCT NEW CONCRETE DRAINAGE SWALE, 1.0m IN WIDTH, IN ACCORDANCE WITH DETAIL
- INSULATE EXISTING WATER MAIN UNDER ROADWAY (3.0m IN WIDTH)



Certificate of Authorization  
AECOM Canada ULC  
No. 4671 Date: 04/03/2025

METRIC

WHOLE NUMBERS INDICATE MILLIMETRES  
DECIMALIZED NUMBERS INDICATE METRES

150 mm W.M.	WATERMAIN	150 mm W.M.	HYDRO	HYDRO	150 mm W.M.	HYDRO	HYDRO	150 mm W.M.	HYDRO
◇	HYDRANT	◇	M.T.S.	M.T.S.	◇	CONCRETE	CONCRETE	◇	CONCRETE
○	VALVE	○	CONCRETE	CONCRETE	○	ASPHALT	ASPHALT	○	ASPHALT
300mm L.D.S.	LAND DRAINAGE SEWER	300mm L.D.S.	PROPERTY LINE	PROPERTY LINE	300mm L.D.S.	SURVEY BAR	SURVEY BAR	300mm L.D.S.	SURVEY BAR
250mm W.W.S.	WASTEWATER SEWER	250mm W.W.S.	ELEVATION	ELEVATION	250mm W.W.S.	TREE	TREE	250mm W.W.S.	TREE
○	MANHOLE	○	SIDEWALK RAMP	SIDEWALK RAMP	○	CONCRETE SIDEWALK	CONCRETE SIDEWALK	○	CONCRETE SIDEWALK
□	CATCH BASIN	□	FENCE	FENCE	□			□	
▽	CATCH PIT	▽			▽			▽	
↑	TRAFFIC SIGNAL POLE	↑			↑			↑	
↑	STREET LIGHT	↑			↑			↑	
↑	GAS	↑			↑			↑	
EXISTING	LEGEND - PLAN	PROPOSED	EXISTING	LEGEND - PLAN	PROPOSED	EXISTING	LEGEND - PROFILE	PROPOSED	EXISTING

LOCATION APPROVED UNDERGROUND STRUCTURES

SUPV. U/G STRUCTURES COMMITTEE DATE

NOTE:  
LOCATION OF UNDERGROUND STRUCTURES AS SHOWN ARE BASED ON THE BEST INFORMATION AVAILABLE. BUT NO GUARANTEE IS GIVEN THAT ALL EXISTING UTILITIES ARE SHOWN OR THAT THE GIVEN LOCATIONS ARE EXACT. CONFIRMATION OF EXISTENCE AND EXACT LOCATION OF ALL SERVICES MUST BE OBTAINED FROM THE INDIVIDUAL UTILITIES BEFORE PROCEEDING WITH CONSTRUCTION.

B.M. Zone 41, # 15 - N. side Sansome Ave. E. of Bedson Str., Tblt. in S. Concr. Foundation of Sansome Junior High School, 1.5m E. & ELEV. 0.1m below brick of S.W. Corn. of most Stry. Concr. Foundation of school.

NO.	REVISIONS	DATE	BY
1	ISSUED FOR ADDENDUM 2	04/03/2025	BC
0	ISSUED FOR TENDER	03/20/2025	BC
A	ISSUED FOR REVIEW	01/31/2025	BC

DESIGNED BY	BC	CHECKED BY	RC
DRAWN BY	RAM	APPROVED BY	RC
HOR. SCALE:	1:250	RELEASED FOR CONSTRUCTION BY:	
VERTICAL:	1:10	DATE	01/31/2025

ENGINEER'S SEAL	
CONSULTANT DRAWING NO.	CT-21

THE CITY OF WINNIPEG	CITY DRAWING NUMBER
PUBLIC WORKS DEPARTMENT ENGINEERING DIVISION	2025 LOCAL STREET RENEWAL PROGRAM
OXBOW BEND ROAD - WEST END TO ST. CHARLES STREET PAVEMENT RECONSTRUCTION STATION 0+220 TO STATION 0+340	SHEET 21 OF 33