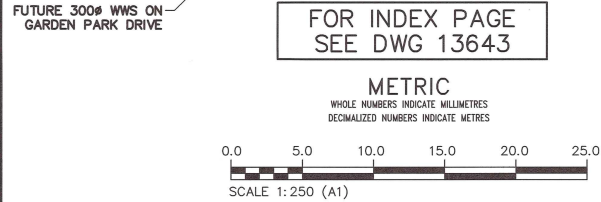
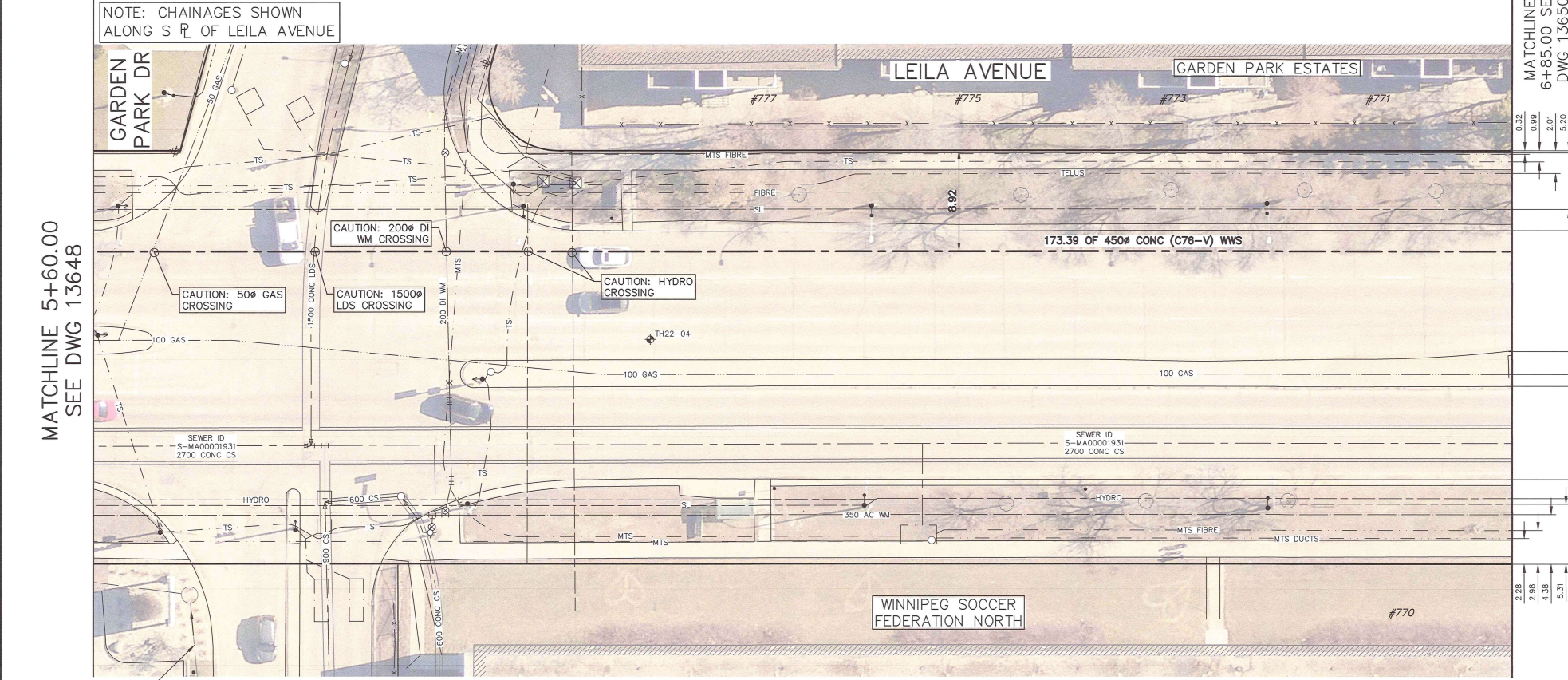


NOTES:
1. WHEN INSTALLING PROPOSED WASTEWATER SEWERS ON LEILA AVE TAKE CAUTION WHEN CROSSING EXISTING RESIDENTIAL WATER SERVICES.

SEWER SERVICE INFORMATION					
ADDRESS	STATUS	SIZE (mm) MATERIAL	COORDINATES AT JUNCTION	COORDINATES AT PROPERTY	REMARKS
#770 LEILA AVE	ACTIVE	150 UNKNOWN	N=5534874.69 E=633337.80	UNKNOWN	NONE
-	ACTIVE	150 UNKNOWN	N=5534855.57 E=633376.79	UNKNOWN	MTS CHAMBER?

SEWER JUNCTION INFORMATION FROM SEWER VIDEO INSPECTION SEWER ID S-MA00001931		
DISTANCE FROM MH ID S-MH00001643		
DISTANCE	DIAMETER	CLOCK
117.4	180	9
121.4	750	3
131.7	150	1
174.7	150	1



WARNING
IF POWER EQUIPMENT OR EXPLOSIVES ARE TO BE USED FOR EXCAVATION ON THIS PROJECT THE CONTRACTOR MUST:
1) NOTIFY THE GAS COMPANY OF THE PROPOSED LOCATION OF EXCAVATION.
2) TAKE PRECAUTION TO AVOID DAMAGE TO GAS COMPANY INSTALLATIONS.
SEE PROVINCIAL REGULATION 210/72 FOR DETAILS

LOCATION APPROVED UNDERGROUND STRUCTURES
SUPV. U/G STRUCTURES COMMITTEE DATE
NOTE:
LOCATION OF UNDERGROUND STRUCTURES AS SHOWN ARE BASED ON THE BEST INFORMATION AVAILABLE BUT NO GUARANTEE IS GIVEN THAT ALL EXISTING UTILITIES ARE SHOWN OR THAT THE GIVEN LOCATIONS ARE EXACT. CONFIRMATION OF EXISTENCE AND EXACT LOCATION OF ALL SERVICES MUST BE OBTAINED FROM THE INDIVIDUAL UTILITIES BEFORE PROCEEDING WITH CONSTRUCTION.

VERTICAL DATUM: CGVD28 (HT2.0 Geoid)	
HORIZONTAL DATUM: NAD83 (June 1990), Zone 14	
0	ISSUED FOR CONSTRUCTION
1	REVISIONS
2	DATE 2026/03/10 BY MLD
3	DATE (YYYY/MM/DD)

KGS GROUP

DESIGNED BY	MID	CHECKED BY	TLE
DRAWN BY	GEL	APPROVED BY	ESB
SCALE:		RELEASED FOR CONSTRUCTION	
HORIZONTAL	1:250	Duane Baker	
VERTICAL	1:50	DATE March 12th, 2026	
DATE			

PLOT DATE:

ENGINEERS
MANITOBA
Certificate of Authorization
KGS Group
No. 245

ENGINEER'S SEAL
CONSULTANT DRAWING NUMBER
C1-08

THE CITY OF WINNIPEG
WATER AND WASTE DEPARTMENT
ENGINEERING SERVICES DIVISION
ARMSTRONG SEWER RELIEF WORKS
CONTRACT 1
LEILA AVENUE
7.7 W OF GARDEN PARK DRIVE TO
90.0 E OF GARDEN PARK DRIVE
SHEET 8 OF 46
CITY DRAWING NUMBER
13649