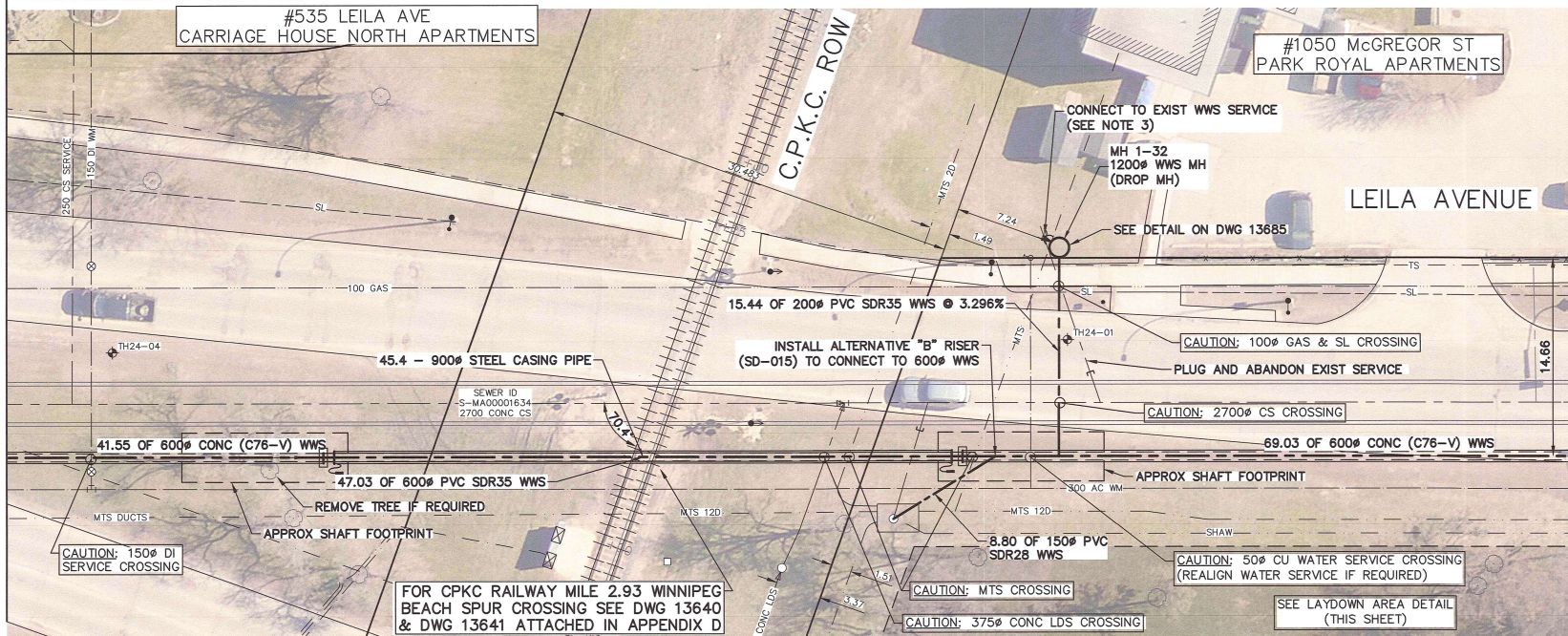
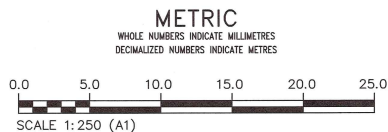


NOTE: CHAINAGES SHOWN
ALONG S R OF LEILA AVENUE



FOR INDEX PAGE
SEE DWG 13643



WARNING
IF POWER EQUIPMENT OR EXPLOSIVES
ARE TO BE USED FOR EXCAVATION ON
THIS PROJECT THE CONTRACTOR MUST:
1) NOTIFY THE GAS COMPANY OF THE
PROPOSED LOCATION OF EXCAVATION.
2) TAKE PRECAUTION TO AVOID DAMAGE
TO GAS COMPANY INSTALLATIONS.
SEE PROVINCIAL REGULATION 210/72 FOR DETAILS

**LOCATION APPROVED
UNDERGROUND STRUCTURES**
SUPV. U/G STRUCTURES COMMITTEE DATE
NOTE:
LOCATION OF UNDERGROUND STRUCTURES AS
SHOWN ARE BASED ON THE BEST INFORMATION
AVAILABLE BUT NO GUARANTEE IS GIVEN THAT ALL
EXISTING UTILITIES ARE SHOWN OR THAT THE GIVEN
LOCATIONS ARE EXACT. CONFIRMATION OF
EXISTENCE AND EXACT LOCATION OF ALL
SERVICES MUST BE OBTAINED FROM THE INDIVIDUAL
UTILITIES BEFORE PROCEEDING WITH CONSTRUCTION.

VERTICAL DATUM: CGVD28 (HT2.0 Geoid)	
HORIZONTAL DATUM: NAD83 (June 1990), Zone 14	
DESIGNED BY	MID
DRAWN BY	GEL
SCALE:	
HORIZONTAL	1:250
VERTICAL	1:50
DATE	March 12th, 2026
ISSUED FOR CONSTRUCTION	2026/03/10
NO.	REVISIONS

KGS GROUP

DESIGNED BY: MID
DRAWN BY: GEL
SCALE: HORIZONTAL 1:250, VERTICAL 1:50
DATE: March 12th, 2026

CHECKED BY: TLE
APPROVED BY: BRO
RELEASED FOR CONSTRUCTION: Duane Baker
DATE: March 12th, 2026

ENGINEER'S SEAL

PROFESSOR OF ENGINEERING
MANITOBA
31615
2026/03/10

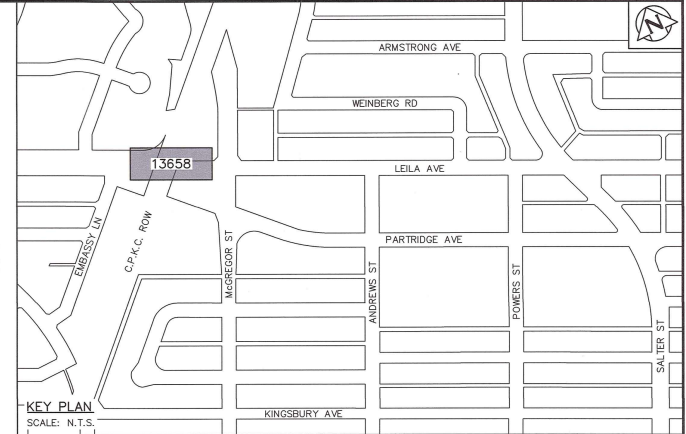
CONSULTANT DRAWING NUMBER
C1-17

THE CITY OF WINNIPEG
WATER AND WASTE DEPARTMENT
ENGINEERING SERVICES DIVISION

ARMSTRONG SEWER RELIEF WORKS
CONTRACT 1
LEILA AVENUE
53.6 E OF AMBASSADOR ROW TO
8.2 W OF MCGREGOR STREET

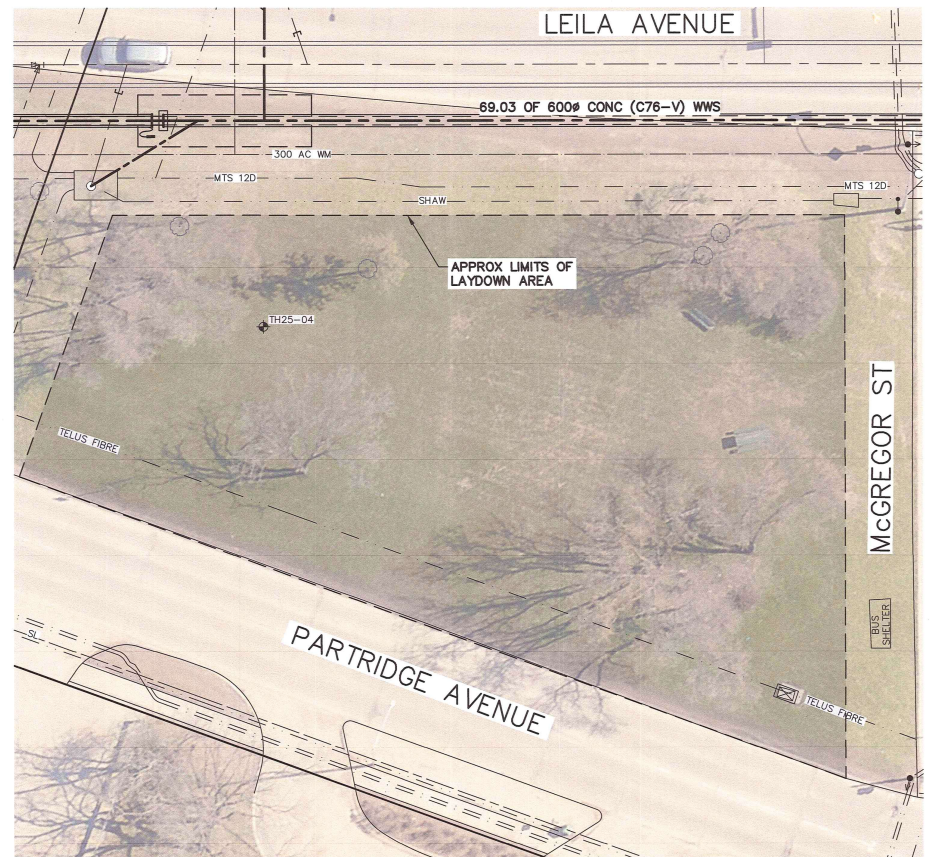
SHEET 17 OF 46
CITY DRAWING NUMBER
13658

- NOTES:**
- WHEN INSTALLING PROPOSED WASTEWATER SEWERS ON LEILA AVE TAKE CAUTION WHEN CROSSING EXISTING RESIDENTIAL WATER SERVICES.
 - FOR CONCRETE COLLAR DETAIL OF PVC/CONCRETE PIPE TRANSITION SEE DWG. 13665.
 - PRIOR TO THE 1200mm DROP MANHOLE INSTALLATION THE CONTRACTOR SHALL VERIFY ELEVATION OF EXIST WWS SERVICE AT PROPERTY LINE AND IF EXISTING WWS SERVICE ELEVATION ALLOWS CROSSING OVER THE EXIST 2700mm CS, THEN THE MANHOLE SHALL NOT BE INSTALLED.



SEWER SERVICE INFORMATION				
ADDRESS	STATUS	SIZE (mm)	COORDINATES AT JUNCTION	COORDINATES AT PROPERTY
#1050 MCGREGOR ST	ABAND	250	N=5534371.24 E=634413.29	UNKNOWN
#1050 MCGREGOR ST	ACTIVE	250	N=5534384.81 E=634384.21	N=5534395.98 E=634385.48
-	ACTIVE	150	N=5534390.17 E=634372.69	UNKNOWN
-	ACTIVE	250	N=5534393.62 E=634384.20	UNKNOWN
#535 LEILA AVE	ACTIVE	250	N=5534415.99 E=634317.54	N=5534440.24 E=634326.82

SEWER JUNCTION INFORMATION FROM SEWER VIDEO INSPECTION SEWER ID S-MA00001634			
DISTANCE FROM MH ID S-MH00001366			
DISTANCE	DIAMETER	CLOCK	
29.3	250	11	
81.6	250	1	
90.2	150	1	
102.9	250	10	
135.0	250	10	



LAYDOWN AREA BETWEEN LEILA AVE
AND PARTRIDGE AVE

**ENGINEERS
GEOSCIENTISTS
MANITOBA**

Certificate of Authorization
KGS Group
No. 245