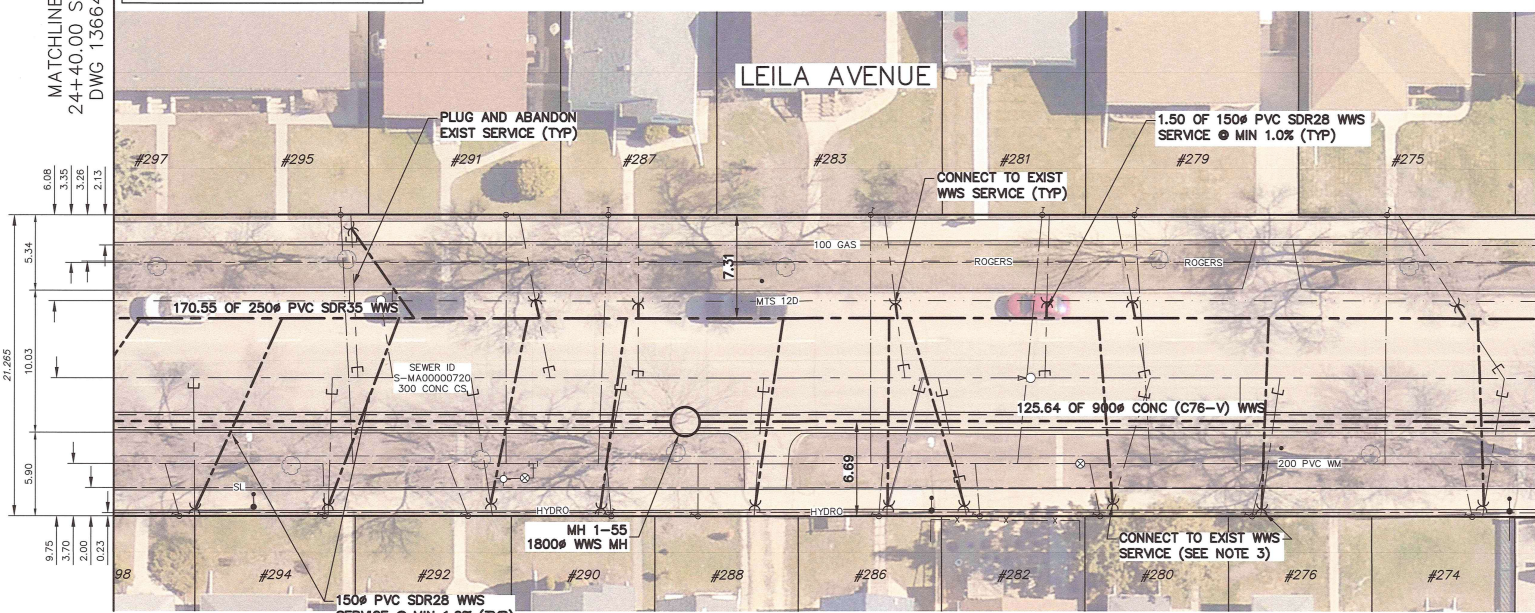


NOTE: CHAINAGES SHOWN  
ALONG S R OF LEILA AVENUE



NOTES:

1. WHEN INSTALLING PROPOSED WASTEWATER SEWERS ON LEILA AVE TAKE CAUTION WHEN CROSSING EXISTING RESIDENTIAL WATER SERVICES.
2. CONTRACTOR SHALL VERIFY ELEVATION OF EXISTING SEWER SERVICES AT PROPOSED DOWNSTREAM CONNECTION LOCATIONS PRIOR TO INSTALLATION OF COLLECTOR WWS TO ALLOW FOR CHANGES OF GRADE TO THE COLLECTOR WWS.
3. WHEN CROSSING THE NEW WWS TRUNK ON LEILA AVE WITH NEW WWS SERVICES (ALL SOUTH WWS SERVICES BETWEEN SALTER ST AND AIKINS ST) TO CONNECT TO THE COLLECTOR SEWER, TAKE CAUTION NOT TO CROSS SHAFT LOCATIONS FOR THE NEW WWS TRUNK TO MITIGATE THE RISK OF POTENTIAL SERVICES SETTLEMENT.

SEWER SERVICE INFORMATION						
ADDRESS	STATUS	SIZE (mm)	COORDINATES AT JUNCTION	COORDINATES AT PROPERTY	REMARKS	
#274 LEILA AVE	ACTIVE	150	N=5534047.88 E=63501.30	N=5534039.79 E=635095.79	NONE	
#275 LEILA AVE	ACTIVE	150	N=5534047.98 E=63501.30	N=5534061.58 E=635099.45	NONE	
#276 LEILA AVE	ACTIVE	150	N=5534054.67 E=635087.02	N=5534046.42 E=635081.65	NONE	
#276 LEILA AVE	ACTIVE	150	N=5534055.52 E=635094.56	UNKNOWN	NONE	
#279 LEILA AVE	ACTIVE	150	N=5534058.69 E=635078.44	N=5534069.99 E=635081.50	NONE	
#280 LEILA AVE	ACTIVE	150	N=5534058.54 E=635078.77	N=5534069.93 E=635077.22	NONE	
#281 LEILA AVE	ACTIVE	150	N=5534061.68 E=635072.07	N=5534071.99 E=635077.22	NONE	
#282 LEILA AVE	ACTIVE	150	N=5534064.85 E=635065.29	N=5534055.18 E=635062.94	NONE	
#286 LEILA AVE	ACTIVE	150	N=5534065.41 E=635064.12	N=5534067.55 E=635057.90	NONE	
#283 LEILA AVE	ACTIVE	150	N=5534065.85 E=635063.18	N=5534076.89 E=635066.75	NONE	
#288 LEILA AVE	ACTIVE	250	N=5534070.07 E=635054.18	N=5534061.51 E=635049.43	NONE	
#287 LEILA AVE	ACTIVE	150	N=5534073.80 E=635046.19	N=5534084.22 E=635051.10	NONE	
#290 LEILA AVE	ACTIVE	150	N=5534074.26 E=635045.22	N=5534066.17 E=635039.49	NONE	
#291 LEILA AVE	ACTIVE	150	N=5534076.43 E=635040.57	N=5534077.78 E=635043.52	NONE	
#292 LEILA AVE	ACTIVE	150	N=5534078.79 E=635035.55	N=5534069.31 E=635032.78	NONE	
#299 LEILA AVE	ACTIVE	150	N=5534081.14 E=635030.56	UNKNOWN	MTS MH DRAIN?	
#295 LEILA AVE	ACTIVE	150	N=5534082.16 E=635028.35	N=5534082.80 E=635032.79	NONE	
#294 LEILA AVE	ACTIVE	150	N=5534082.92 E=635026.73	N=5534074.21 E=635022.33	NONE	
#298 LEILA AVE	ACTIVE	150	N=5534087.08 E=635017.89	N=5534078.19 E=635013.84	NONE	

SEWER JUNCTION INFORMATION FROM SEWER VIDEO INSPECTION SEWER ID S-MA00000720			
DISTANCE FROM MH ID S-MH00001284			
DISTANCE	DIAMETER	CLOCK	
38.5	150	2	
48.3	150	2	
50.2	150	11	
52.7	150	11	
57.8	150	2	
63.7	150	11	
68.8	150	1	
69.9	150	10	
78.7	250	2	
88.5	150	11	
89.8	150	2	
91.0	150	2	
SEWER JUNCTION INFORMATION FROM SEWER VIDEO INSPECTION SEWER ID S-MA00016949			
DISTANCE FROM MH ID S-MH00000618			
DISTANCE	DIAMETER	CLOCK	
8.1	150	11	
8.4	150	2	
14.8	150	2	
17.5	150	2	
33.3	150	1	
33.3	150	11	

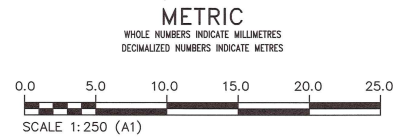


THE CITY OF WINNIPEG  
WATER AND WASTE DEPARTMENT  
ENGINEERING SERVICES DIVISION

ARMSTRONG SEWER RELIEF WORKS  
CONTRACT 1  
LEILA AVENUE  
113.1 E OF SALTER STREET TO  
58.9 W OF AIKINS STREET

SHEET 24 OF 46  
CITY DRAWING NUMBER  
13665

FOR INDEX PAGE  
SEE DWG 13643



**WARNING**  
IF POWER EQUIPMENT OR EXPLOSIVES ARE TO BE USED FOR EXCAVATION ON THIS PROJECT THE CONTRACTOR MUST:  
1) NOTIFY THE GAS COMPANY OF THE PROPOSED LOCATION OF EXCAVATION.  
2) TAKE PRECAUTION TO AVOID DAMAGE TO GAS COMPANY INSTALLATIONS.  
SEE PROVINCIAL REGULATION 210/72 FOR DETAILS

**LOCATION APPROVED**  
UNDERGROUND STRUCTURES  
SUPV. U/G STRUCTURES COMMITTEE DATE  
NOTE:  
LOCATION OF UNDERGROUND STRUCTURES AS SHOWN ARE BASED ON THE BEST INFORMATION AVAILABLE BUT NO GUARANTEE IS GIVEN THAT ALL EXISTING UTILITIES ARE SHOWN OR THAT THE GIVEN LOCATIONS ARE EXACT. CONFIRMATION OF EXISTENCE AND EXACT LOCATION OF ALL SERVICES MUST BE OBTAINED FROM THE INDIVIDUAL UTILITIES BEFORE PROCEEDING WITH CONSTRUCTION.

VERTICAL DATUM: CGVD28 (HT2.0 Geoid)	
HORIZONTAL DATUM: NAD83 (June 1990), Zone 14	
0	ISSUED FOR CONSTRUCTION
NO.	REVISIONS
DATE	BY
2026/03/10	MTD

DESIGNED BY MID		CHECKED BY TLE	
DRAWN BY GEL		APPROVED BY RBO	
SCALE: HORIZONTAL 1:250 VERTICAL 1:50		RELEASED FOR CONSTRUCTION Duane Baker	
DATE		DATE March 12th, 2026	