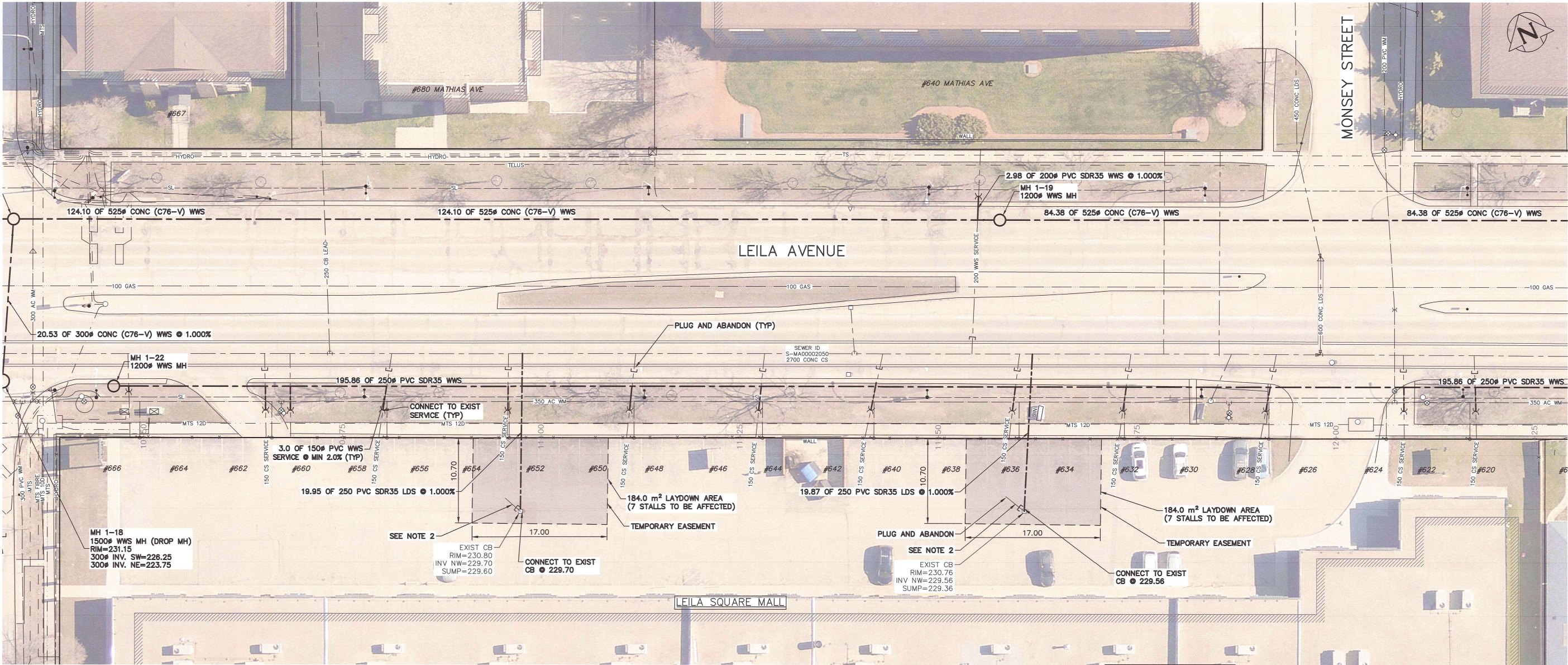


- NOTES:
1. EACH WWS SERVICE IS SHARED BY TWO COMMERCIAL UNITS FROM THE MALL.
 2. THE EXISTING CATCH BASINS APPEAR TO CONNECT TO TWO OF THE WWS SERVICES. BY DISCONNECTING THEM FROM THE WWS SERVICES AND CONNECTING THEM TO THE 2700# CS, THE STORM FLOW WILL BE SEPARATED FROM THE WWS FLOW.

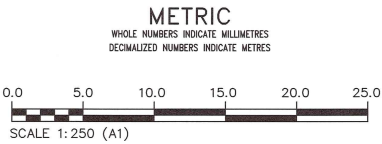
KEY PLAN
SCALE: N.T.S.



PROPOSED LAND DRAINAGE SEWER CONNECTIONS FROM LEILA SQUARE MALL
(#620-666 LEILA AVE)



FOR INDEX PAGE
SEE DWG 13643



WARNING
IF POWER EQUIPMENT OR EXPLOSIVES ARE TO BE USED FOR EXCAVATION ON THIS PROJECT THE CONTRACTOR MUST:
1) NOTIFY THE GAS COMPANY OF THE PROPOSED LOCATION OF EXCAVATION.
2) TAKE PRECAUTION TO AVOID DAMAGE TO GAS COMPANY INSTALLATIONS.
SEE PROVINCIAL REGULATION 210/72 FOR DETAILS

LOCATION APPROVED UNDERGROUND STRUCTURES
SUPV. U/G STRUCTURES COMMITTEE DATE
NOTE:
LOCATION OF UNDERGROUND STRUCTURES AS SHOWN ARE BASED ON THE BEST INFORMATION AVAILABLE. BUT NO GUARANTEE IS GIVEN THAT ALL EXISTING UTILITIES ARE SHOWN OR THAT THE GIVEN LOCATIONS ARE EXACT. CONFIRMATION OF EXISTENCE AND EXACT LOCATION OF ALL SERVICES MUST BE OBTAINED FROM THE INDIVIDUAL UTILITIES BEFORE PROCEEDING WITH CONSTRUCTION.

VERTICAL DATUM: CGVD28 (HT2.0 Geoid)	
HORIZONTAL DATUM: NAD83 (June 1990), Zone 14	
0	ISSUED FOR CONSTRUCTION
2026/03/10	DATE (YYYY/MM/DD)
1	BY
2	REVISIONS

KGS GROUP	
DESIGNED BY	MID
CHECKED BY	TLE
DRAWN BY	GEL
APPROVED BY	RBO
SCALE:	
HORIZONTAL	1:250
VERTICAL	1:50
RELEASED FOR CONSTRUCTION	Duane Baker
DATE	March 12th, 2026
PLOT DATE:	



THE CITY OF WINNIPEG
WATER AND WASTE DEPARTMENT
ENGINEERING SERVICES DIVISION

ARMSTRONG SEWER RELIEF WORKS
CONTRACT 1
PRIVATE SEWER SEPARATION
LEILA SQUARE MALL (#620-666 LEILA AVE)

SHEET 34 OF 46
CITY DRAWING NUMBER
13677