

1800mm INTERNAL DROP MANHOLE
MH 1-51, MH 1-61

SCALE 1:25

1800mm INTERNAL DUAL DROP MANHOLE
MH 1-14, MH 1-27, MH 1-39

SCALE 1:25

1800mm INTERNAL TRIPLE DROP MANHOLE
MH 1-21

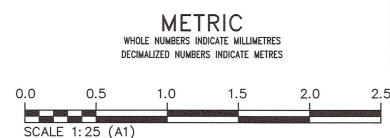
SCALE 1:25

1500mm INTERNAL DROP MANHOLE
MH 1-31

SCALE 1:25

MANHOLE NOTE:

ALL MANHOLES WITHIN THE PLANNED ROAD RENEWAL ON LEILA AVENUE AND MCGREGOR STREET SHALL HAVE 300mm HIGH 750 DIA. MANHOLE BARREL SECTION AND A 50mm ADJUSTING RING UNDER THE FRAME TO ALLOW FOR RIM ADJUSTMENTS DURING ROAD RENEWAL



FOR INDEX PAGE
SEE DWG 13643

LOCATION APPROVED UNDERGROUND STRUCTURES		VERTICAL DATUM: CGVD28 (HT2.0 Geoid)	
HORIZONTAL DATUM: NAD83 (June 1990), Zone 14			
SUPV. U/G STRUCTURES COMMITTEE	DATE		
NOTE:			
LOCATION OF UNDERGROUND STRUCTURES AS SHOWN ARE BASED ON THE BEST INFORMATION AVAILABLE BUT NO GUARANTEE IS GIVEN THAT ALL EXISTING UTILITIES ARE SHOWN OR THAT THE GIVEN LOCATIONS ARE EXACT. CONFIRMATION OF EXISTENCE AND EXACT LOCATION OF ALL UTILITIES MUST BE OBTAINED FROM THE INDIVIDUAL UTILITIES BEFORE PROCEEDING WITH CONSTRUCTION.			
0	ISSUED FOR CONSTRUCTION	2026/03/10	MID
NO.	REVISIONS	DATE	BY

KGS GROUP	
DESIGNED BY	MID
CHECKED BY	TLE
DRAWN BY	GEL
APPROVED BY	RBO
SCALE:	
HORIZONTAL	AS NOTED
VERTICAL	AS NOTED
DATE	March 12th, 2026

ENGINEER'S SEAL	
PROF. OF MANITOBA	31615
CONSULTANT DRAWING NUMBER	C1-40

THE CITY OF WINNIPEG WATER AND WASTE DEPARTMENT ENGINEERING SERVICES DIVISION	
ARMSTRONG SEWER RELIEF WORKS CONTRACT 1 MANHOLE DETAILS SHEET 1	SHEET 37 OF 46 CITY DRAWING NUMBER 13681



BID OPP: 839-2025
CONTRACT NUMBER: 1

FILE PATH: \\kgs-file\y-data\Projects\2025\25-0107-002\DWG\Mun\C1 Sheets\25-0107-002_C1_Cover Index Details.dwg