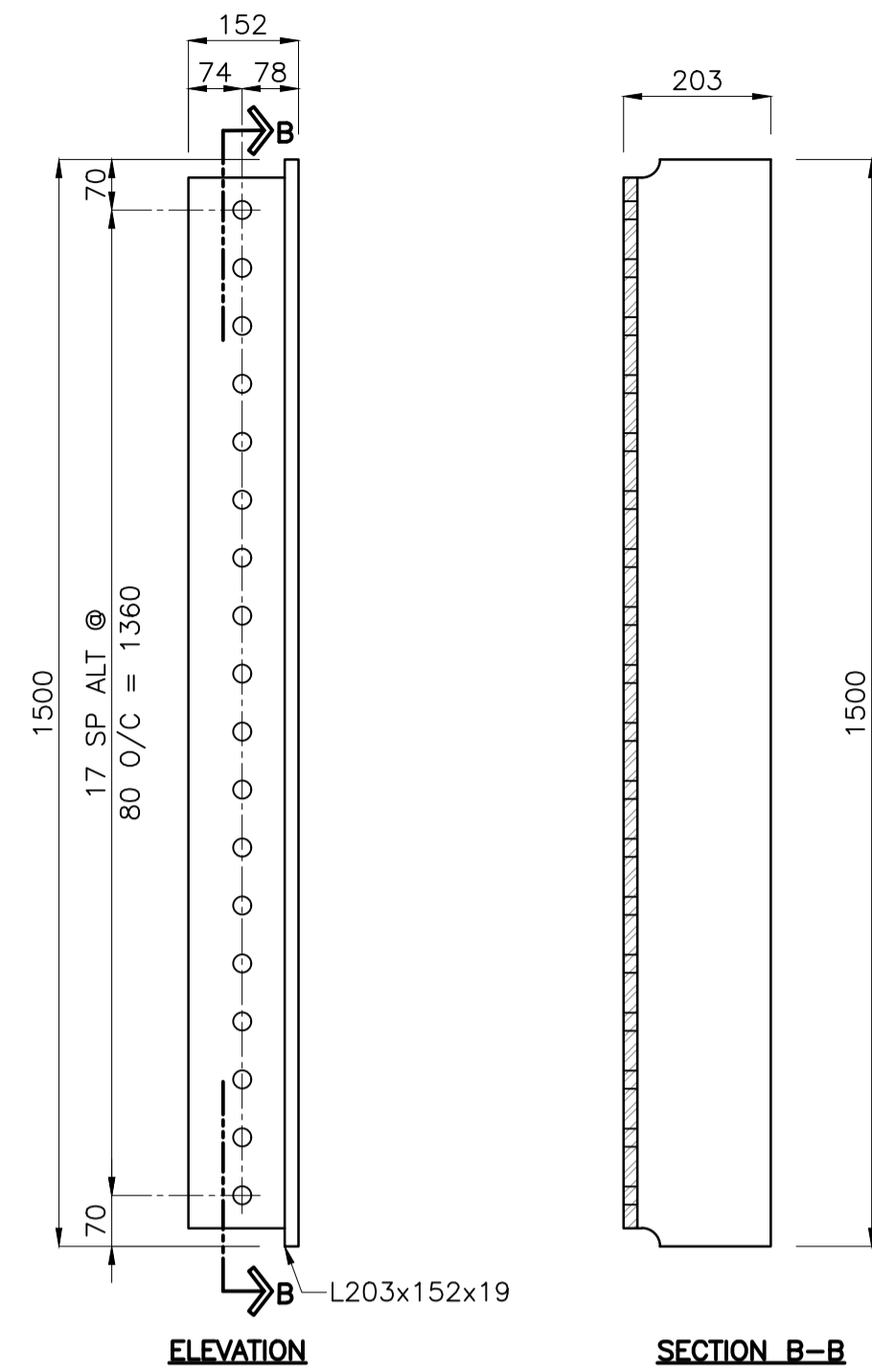


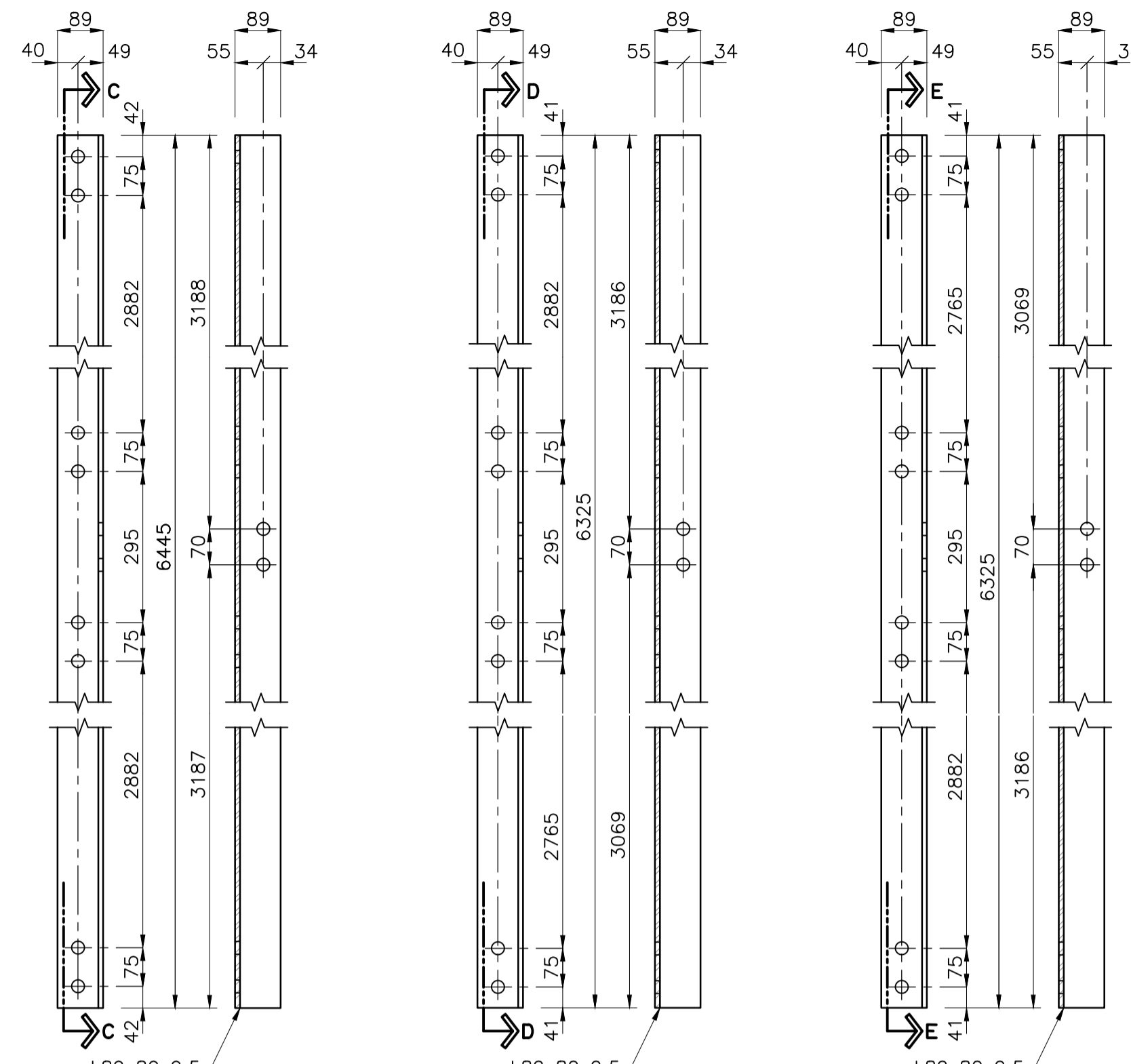
**CONNECTION ANGLE
MK. 'GA1' & 'GA2' (PM)**

1:10
MK. 'GA1' SHOWN
MK. 'GA2' OPH



**INTERMEDIATE STIFFENER ANGLE
MK. 'GA6' & 'GA7' (PM)**

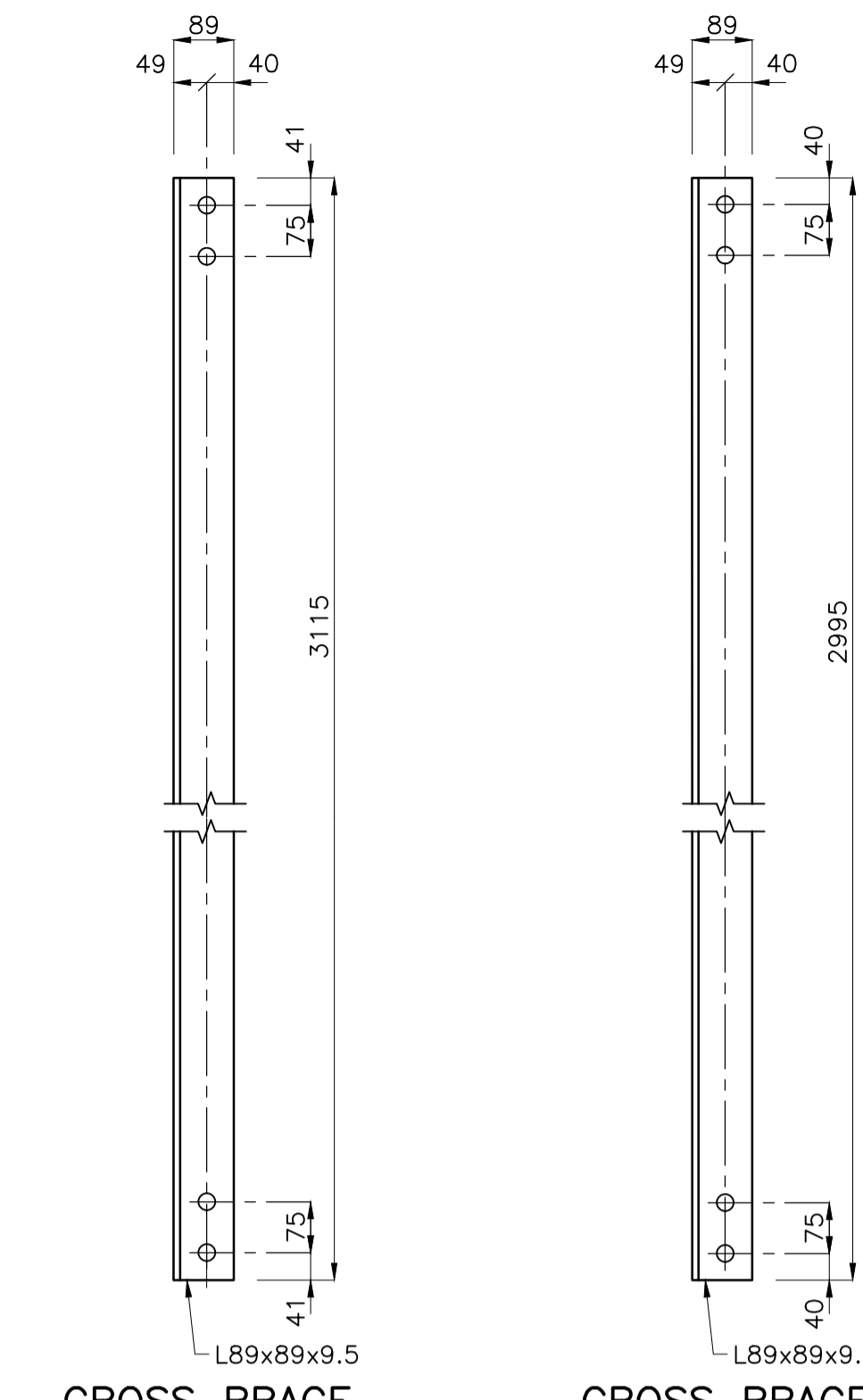
1:10
MK. 'GA7' SHOWN
MK. 'GA6' OPH



CROSS BRACE ANGLE MK. 'BA1'

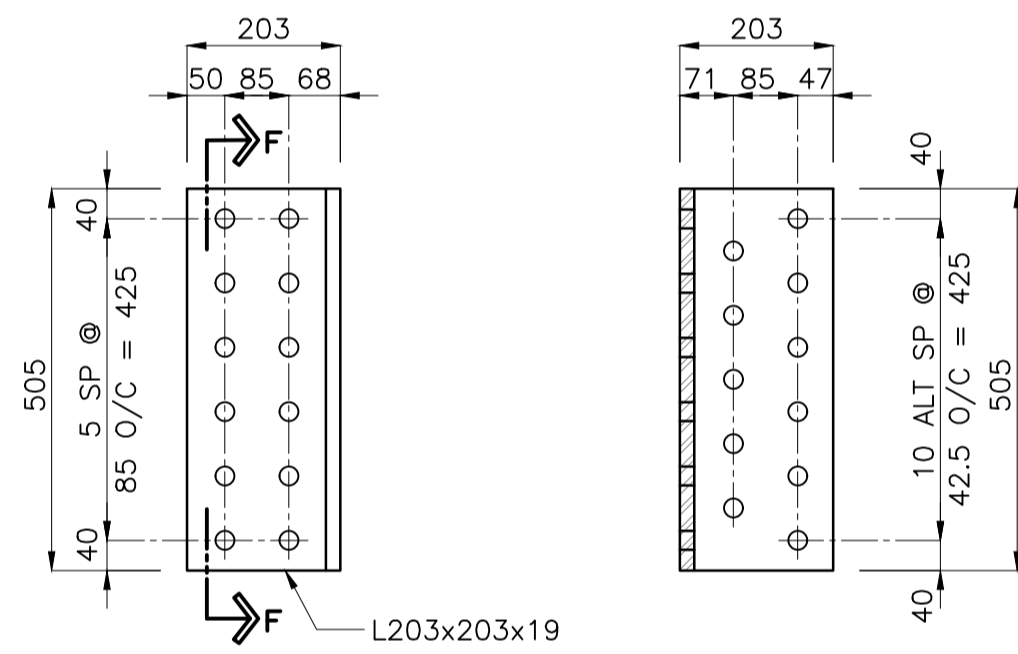
CROSS BRACE ANGLE MK. 'BA2'

CROSS BRACE ANGLE MK. 'BA3'



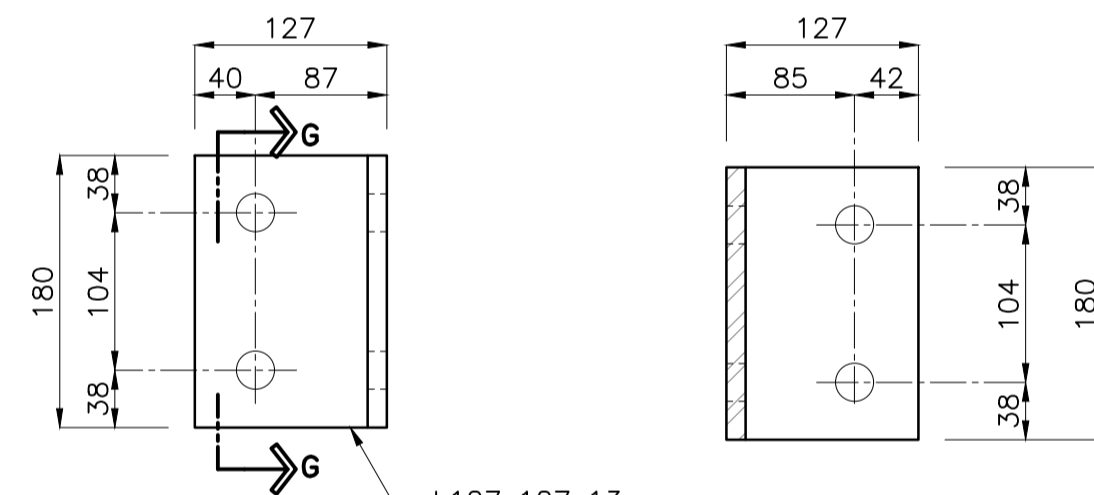
CROSS BRACE ANGLE MK. 'BA4'

CROSS BRACE ANGLE MK. 'BA5'



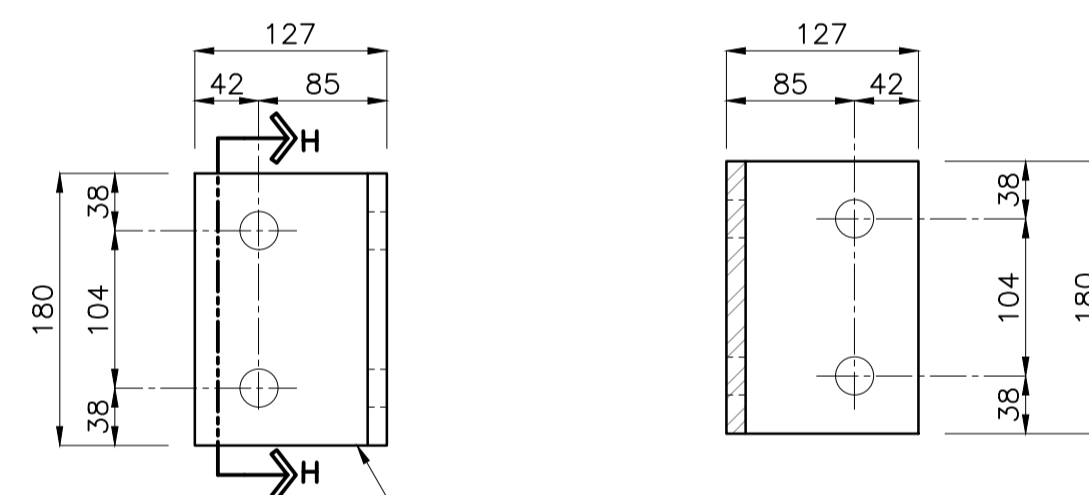
CONNECTION ANGLE MK. 'GA3' (PM)

1:10



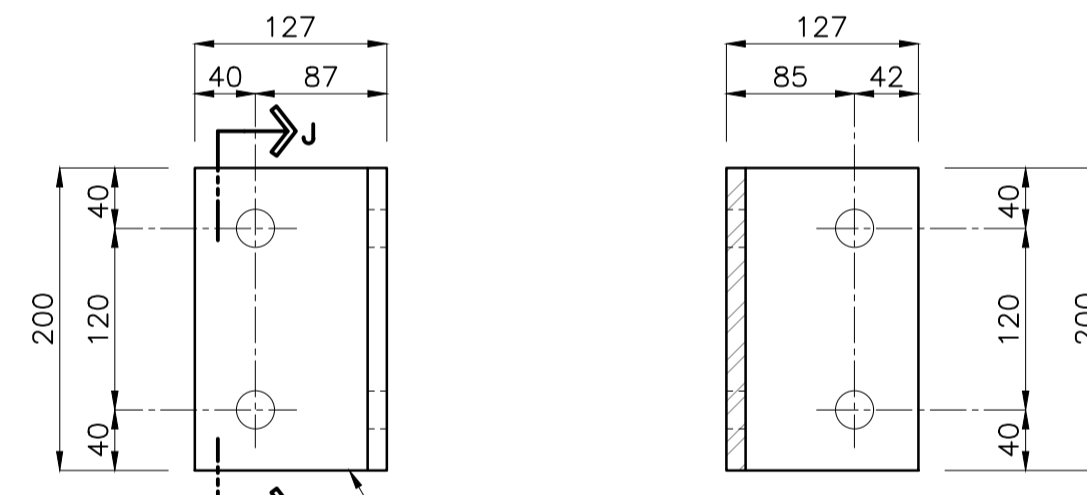
CONNECTION ANGLE MK. 'CA1'

1:5



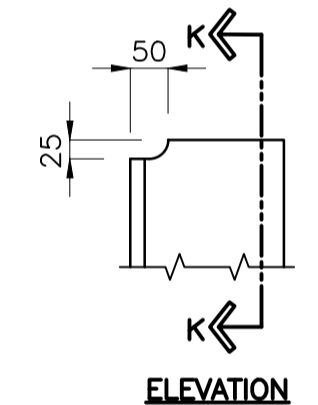
CONNECTION ANGLE MK. 'CA2'

1:5



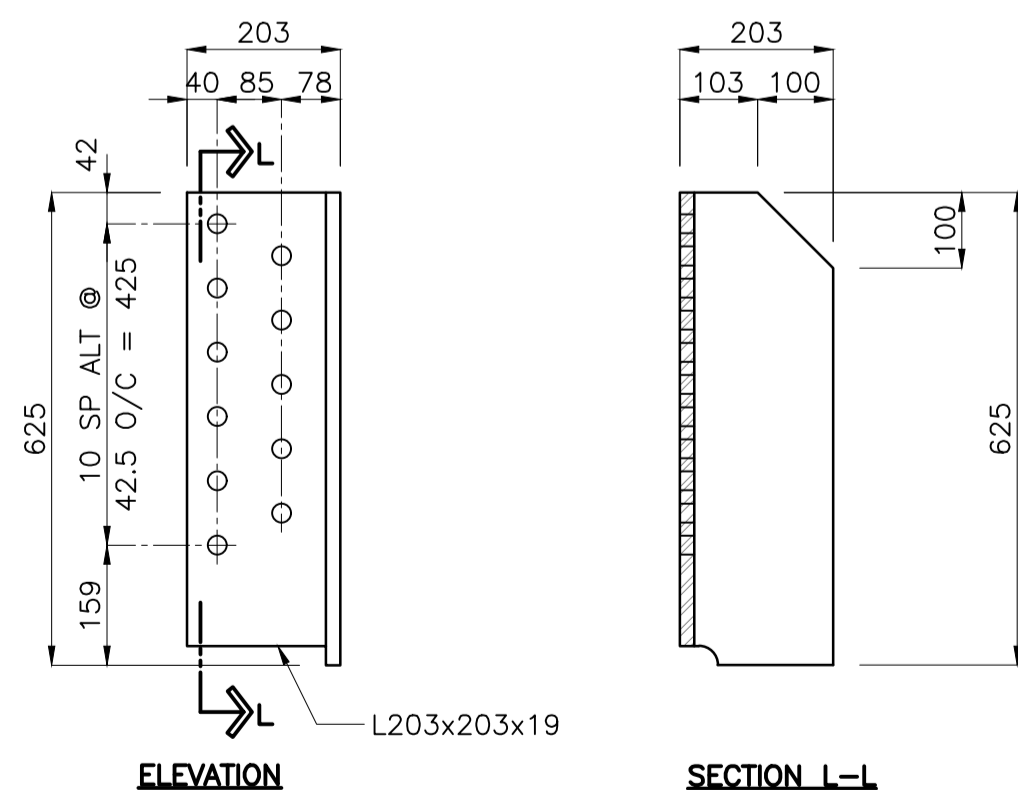
CONNECTION ANGLE MK. 'CA3'

1:5



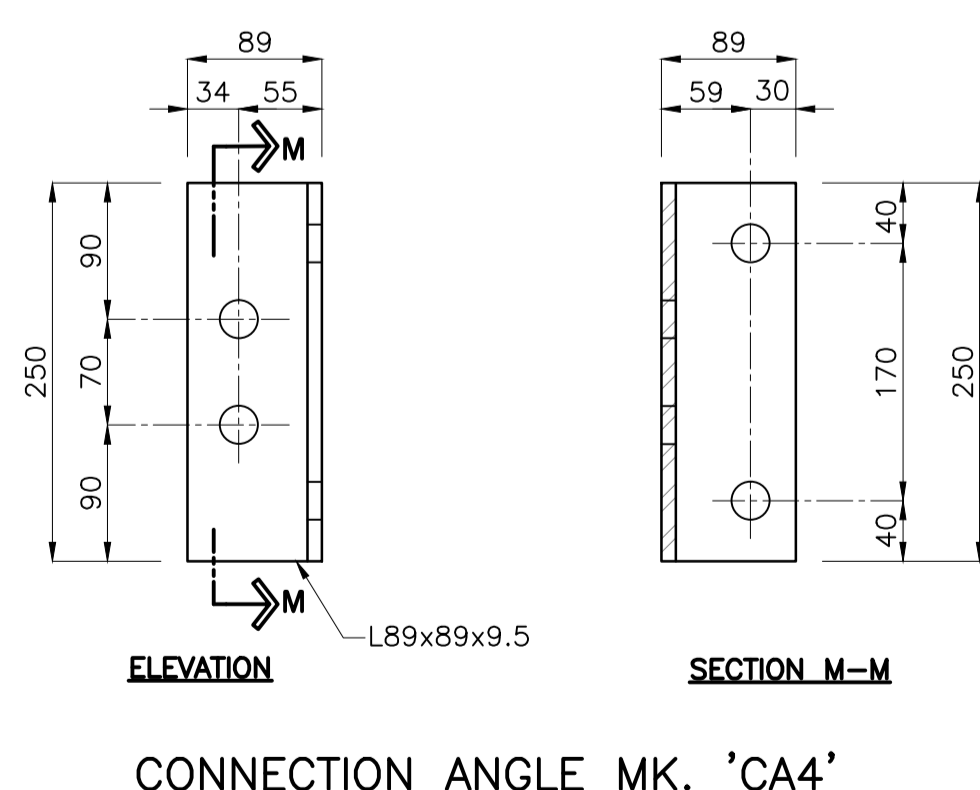
TYPICAL COPE DETAIL

1:10



CONNECTION ANGLE MK. 'GA4' & 'GA5' (PM)

1:10
MK. 'GA5' SHOWN
MK. 'GA4' OPH



CONNECTION ANGLE MK. 'CA4'

1:5

B.M. ELEV.			
DESIGNED BY	S.S.Y.	CHECKED BY	Y.M.S.
DRAWN BY	J.M.B.	APPROVED BY	E.R.T.
HOR. SCALE:	AS NOTED	RELEASED FOR CONSTRUCTION:	
0 ISSUED FOR TENDER	26.02.13	J.M.B.	
NO. REVISIONS	DATE	BY	DATE 2026-02-11



ENGINEER'S SEAL	
CONSULTANT DRAWING NO.	S-111

THE CITY OF WINNIPEG
WATER AND WASTE DEPARTMENT
ENGINEERING DIVISION

GREATER WINNIPEG WATER DISTRICT
RAILWAY BRIDGE REPLACEMENT AT MILE 41.3

STRUCTURAL STEEL
 ANGLE DETAILS

SHEET 14 OF 17
 CAD FILE DRAWING NUMBER 33942s-111-m41.3.dwg
 CITY DRAWING NUMBER 1-0754R-S0012-001

U:\1127942\0200_drawing\0202_sheets_files\03_structural\03042s-11-m41.3.dwg
 2026/02/11 4:02 PM By: Ebrahim, Jams