



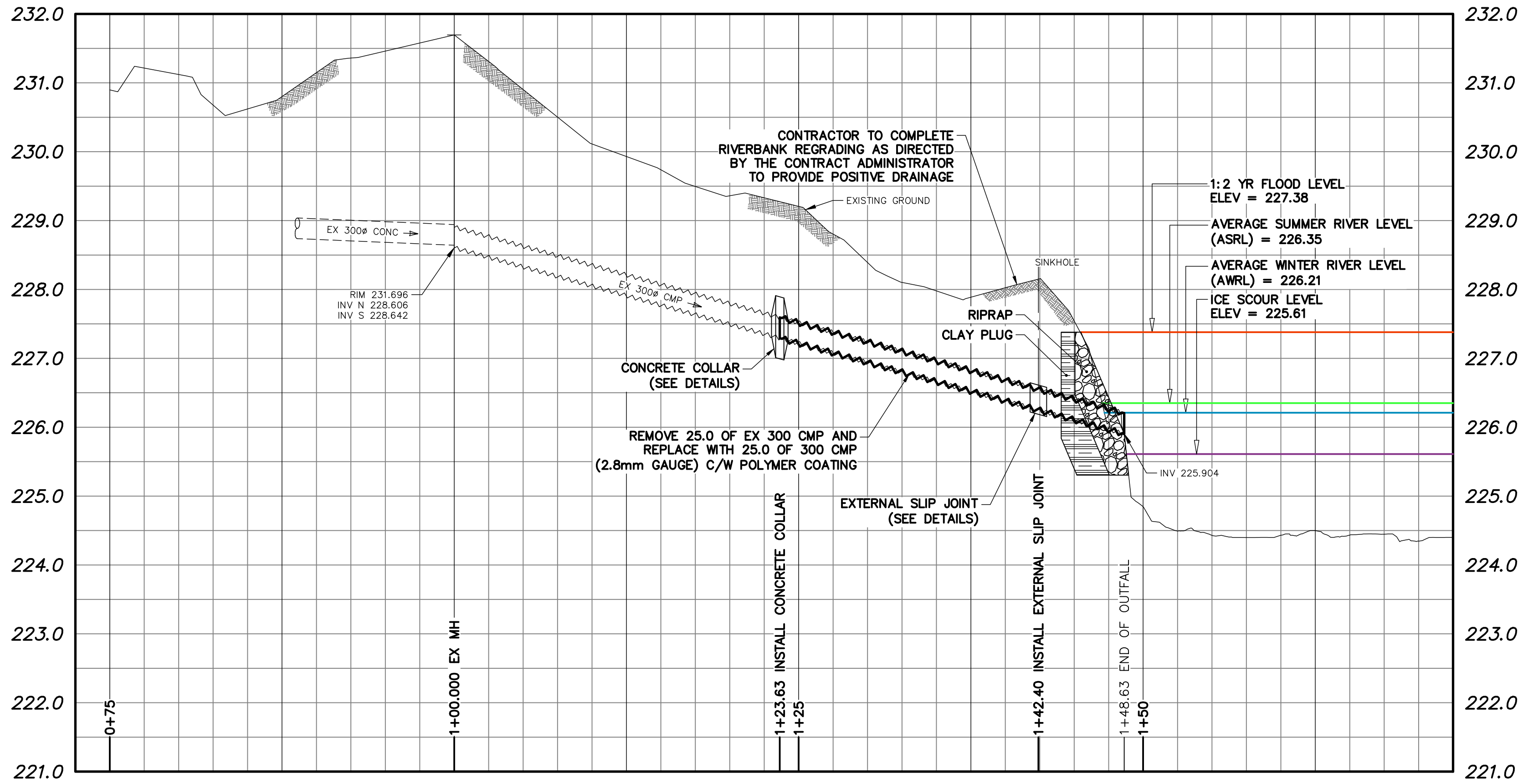
EXISTING SINK HOLE
DATE: 2025-08-26



EXISTING VEGETATION AT SITE
DATE: 2025-08-26



EXISTING PATH AT SITE
DATE: 2025-11-18



NOTE: CHAINAGES SHOWN
ALONG S ϕ OF EXISTING PIPE

- NOTES:
1. ALL EXCAVATED MATERIAL WITHIN 107.0 OF THE ASRL MUST BE ALL EXCAVATED MATERIAL WITHIN 107.0 OF THE ASRL MUST BE REMOVED FROM SITE (NO STOCKPILING)
 2. ALL MATERIALS, INCLUDING TEMPORARY MATERIALS PLACED TO CONSTRUCT ACCESS RAMPS, MUST BE REMOVED FROM SITE FOLLOWING COMPLETION OF CONSTRUCTION.
 3. THE CONTRACTOR SHALL DEVELOP SUITABLE ACCESS AND LAYDOWN AREA(S) AS REQUIRED TO FACILITATE CONSTRUCTION. THE CONTRACTOR SHALL MAKE EVERY REASONABLE EFFORT TO MINIMIZE THE CONSTRUCTION FOOTPRINT AND SURFACE DAMAGE. CONTRACTOR TO PROVIDE ACCESS PLAN AND EQUIPMENT LIST TO THE CONTRACT ADMINISTRATOR FOR REVIEW AND APPROVAL PRIOR TO CONSTRUCTION.
 4. PERMITS AS REQUIRED FOR CONSTRUCTION OF TEMPORARY ACCESS ARE THE RESPONSIBILITY OF THE CONTRACTOR.
 5. CONTRACTOR TO PROTECT AND/OR REMOVE EXISTING TREES AS REQUIRED TO FACILITATE ACCESS AND AS APPROVED BY THE CONTRACT ADMINISTRATOR. ALL TREES REQUIRING REMOVAL SHALL BE MARKED BY THE CONTRACTOR PRIOR TO CONSTRUCTION FOR REVIEW AND APPROVAL.
 6. CONTRACTOR TO PROVIDE PEDESTRIAN RE-ROUTING PLAN TO CONTRACT ADMINISTRATOR FOR REVIEW AND APPROVAL PRIOR TO CONSTRUCTION.

