

LEGEND					
LIGHTING			FOURPLEX RECEPTACLE (QUAD)	VOICE/DATA	
	2'x4' TROFFER (C DENOTES TYPE)		DIRECT CONNECT		DATA OUTLET (1 CAT6 CABLE, # DENOTES NUMBER OF DROPS)
	VACANCY SENSOR SWITCH (WALL MOUNTED)	ELECTRICAL DISTRIBUTION			HDMI OUTLET
	DIMMER SWITCH		POWER PANELBOARD - SURFACE MOUNT/FLUSH MOUNT	ABBREVIATIONS	
	VACANCY SENSOR DIMMER SWITCH		SYSTEM PANELBOARD - SURFACE MOUNT/FLUSH MOUNT	ER	EXISTING TO BE REMOVED
FIRE ALARM		SECURITY/ACCESS SYSTEM		EX	EXISTING TO REMAIN
	FIRE ALARM SIGNAL HORN & STROBE - WALL MOUNTED		SECURITY KEYPAD	EL	EXISTING TO BE RELOCATED
ELECTRICAL CONNECTIONS			ELECTRIC STRIKE	R	RELOCATED EXISTING (SHOWN IN NEW LOCATION)
	DUPLEX RECEPTACLE		DOOR CONTACT (FLUSH IN FRAME)	EXR	EXISTING TO REMAIN AND REPLACE (SAME LOCATION)
	DUPLEX RECEPTACLE - ISOLATED GROUND		CARD ACCESS READER (PROXIMITY)		
	FOURPLEX RECEPTACLE (QUAD) - ISOLATED GROUND		REQUEST TO EXIT MOTION SENSOR		

GENERAL NOTES

- A. ELECTRICAL DRAWINGS SHALL BE READ IN CONJUNCTION WITH ARCHITECTURAL AND MECHANICAL DRAWINGS AND SPECIFICATIONS. REFER TO ARCHITECTURAL DRAWINGS FOR COMPLETE SCOPE OF WORK.
- B. ALL BUILDING OPERATIONS SHALL CONTINUE DURING RENOVATION WORK, INCLUDE ALL ALLOWANCES NECESSARY TO COMPLETE INSTALLATION OF NEW EQUIPMENT PRIOR TO DEMOLISHING OR DISCONNECTING EQUIPMENT ESSENTIAL FOR BUILDING OPERATIONS.
- C. E.C. SHALL COORDINATE ALL DEMOLITION WORK WITH G.C.
- D. ALL EXISTING SYSTEMS/EQUIPMENT/DEVICES REQUIRING DISCONNECTION TO FACILITATE DEMOLITION SHALL BE RECONNECTED AND RETURNED TO FULLY OPERATIONAL CONDITION.
- E. IF REQUIRED, E.C. TO PROVIDE FOR AND SUBMIT PLAN OF TEMPORARY POWER PROVISIONS AND COORDINATE ANY SHUTDOWNS WITH G.C.
- F. E.C. TO LOCATE/RELOCATE EXISTING SERVICES AS REQUIRED TO SUIT INTERIOR RENOVATION.
- G. ALL NEW CONDUIT INSTALLATIONS SHALL BE SECURED TO BASE-BUILDING STRUCTURE AND NOT INSTALLED IN OR BELOW THE CONCRETE SLAB UNLESS SPECIFICALLY INDICATED ON CONSULTANT'S ELECTRICAL DRAWINGS.
- H. THE CONSULTANT SHALL IMMEDIATELY BE NOTIFIED OF ANY EXISTING SITE CONDITIONS REQUIRING THE RELOCATION OR REVISION OF DEVICES/EQUIPMENT SHOWN.
- I. IF POWER SHUT DOWN IN REQUIRED, PROVIDE A 72 HOURS NOTICE TO THE BUILDING OPERATOR.
- J. PROVIDE PULL BOXES FOR EACH CONDUIT RUN AS PER CODE (POWER AND DATA).
- K. ENSURE ALL SECURITY DEVICES ARE NOT MOUNTED WITHIN PLENUM SPACE.

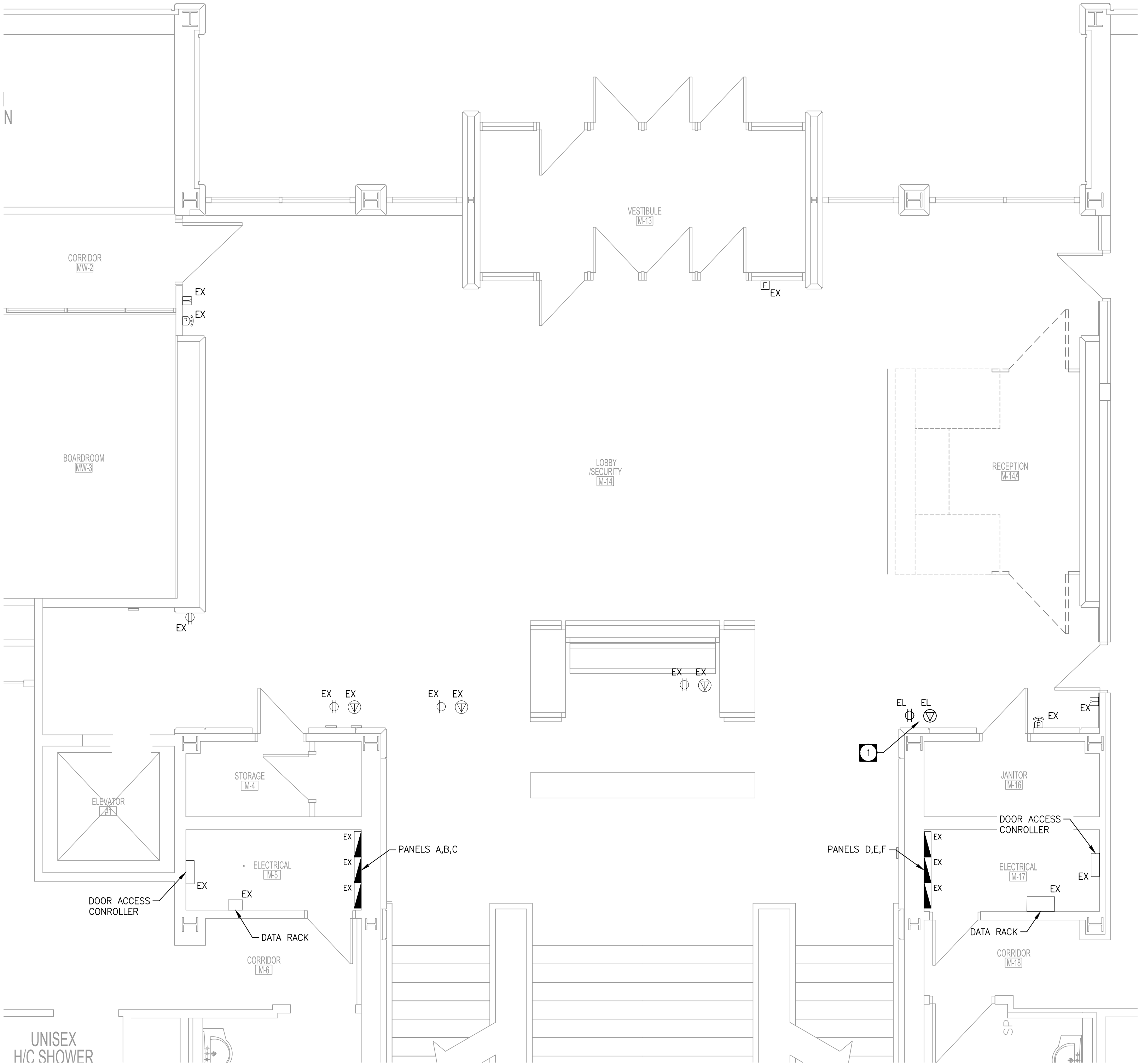
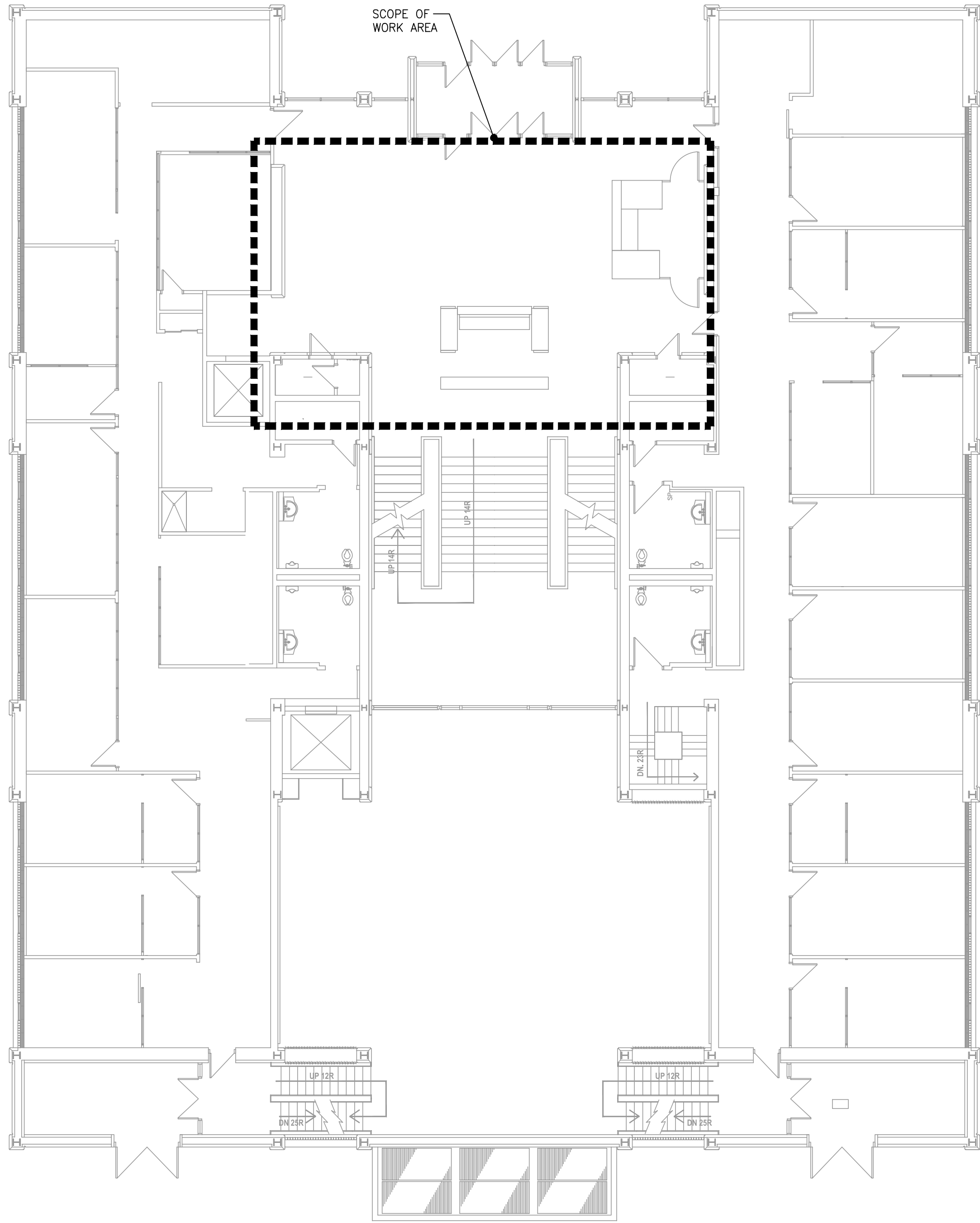
DRAWING NOTES

1. EXISTING TV TO BE RELOCATED. EXTEND/REUSE EXISTING WIRING TO ACCOMMODATE NEW LOCATION.



towereng.ca

These design documents are prepared solely for the use by the party with whom the design professional has entered into a contract and there are no representations of any kind made by the design professional to any party with whom the design professional has not entered into a contract. Any use of the drawing, disk or electronic data without the expressed written permission of Tower Engineering Group is strictly prohibited. The contractor is responsible to verify all dimensions with conditions on the site and report discrepancies to Tower Engineering for adjustment. All prints to be returned.



No.	REVISION/DESCRIPTION	BY	DATE
1	ISSUED FOR CONSTRUCTION	TN	11.04 2025
0	ISSUED FOR REVIEW	TN	08.15 2025

SEAL



DATE	DESIGN	DRAWN	CHECKED	APPROVED
2025.08.01	BY: TN	BY: SH	BY: DKG	BY: SMM



PROJECT  
CITY HALL - COUNCIL BUILDING  
RECEPTION SECURITY WALLS

510 MAIN STREET  
SHEET TITLE

KEYPLAN  
AND DEMOLITION PLAN

SCALE	PROJECT No:	SHEET No:
AS SHOWN	251313	E-1

DRAWING SHEET SIZE: D (24" x 36") PLOT 1:1



KEYPLAN  
SCALE: N.T.S.



1  
E-1  
SCALE: 1/4" = 1'-0"  
PARTIAL FLOOR PLAN