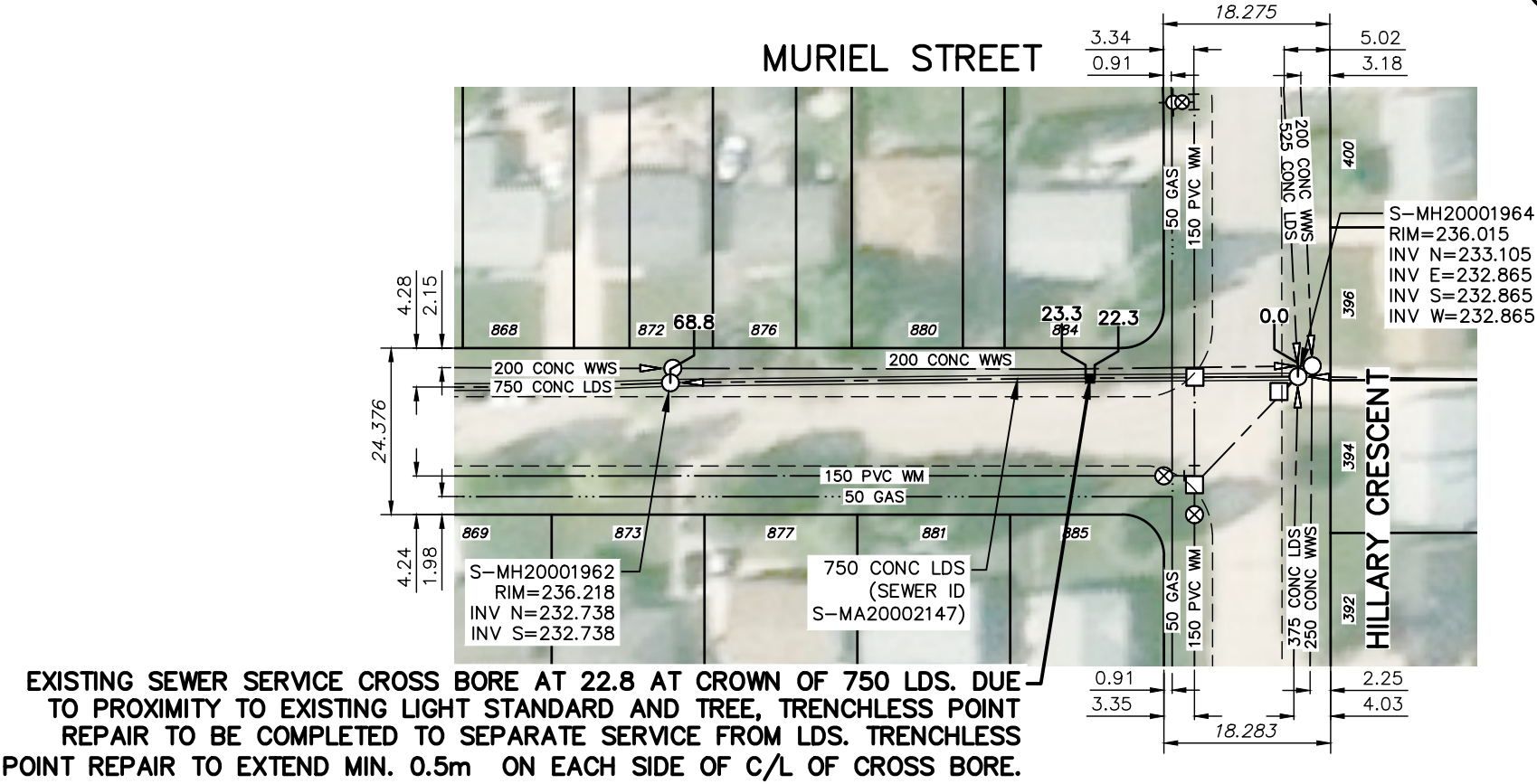


SEWER JUNCTION INFORMATION FROM SEWER VIDEO INSPECTION		
SEWER ID S-MA20002147		
DISTANCE FROM S-MH20001964		
DISTANCE	DIAMETER	CLOCK
8.3	250	12:00



EXISTING SEWER SERVICE CROSS BORE AT 22.8 AT CROWN OF 750 LDS. DUE TO PROXIMITY TO EXISTING LIGHT STANDARD AND TREE, TRENCHLESS POINT REPAIR TO BE COMPLETED TO SEPARATE SERVICE FROM LDS. TRENCHLESS POINT REPAIR TO EXTEND MIN. 0.5m ON EACH SIDE OF C/L OF CROSS BORE.

METRIC
WHOLE NUMBERS INDICATE MILLIMETRES
DECIMALIZED NUMBERS INDICATE METRES

WARNING
IF POWER EQUIPMENT OR EXPLOSIVES ARE TO BE USED FOR EXCAVATION ON THIS PROJECT THE CONTRACTOR MUST:
1) NOTIFY THE GAS COMPANY OF THE PROPOSED LOCATION OF EXCAVATION.
2) TAKE PRECAUTION TO AVOID DAMAGE TO GAS COMPANY INSTALLATIONS.
SEE PROVINCIAL REGULATION 140/92 FOR DETAILS



**ENGINEERS
GEOSCIENTISTS
MANITOBA**

Certificate of Authorization
Stantec Consulting Ltd.
No. 1301

FOR INDEX SEE
13692

TENDER NO. 935-2025

LOCATION APPROVED
UNDERGROUND STRUCTURES

SUPV. U/G STRUCTURES _____ DATE _____
COMMITTEE

NOTE:
LOCATION OF UNDERGROUND STRUCTURES AS SHOWN ARE BASED ON THE BEST INFORMATION AVAILABLE BUT NO GUARANTEE IS GIVEN THAT ALL EXISTING UTILITIES ARE SHOWN OR THAT THE GIVEN LOCATIONS ARE EXACT. CONFIRMATION OF EXISTENCE AND EXACT LOCATION OF ALL SERVICES MUST BE OBTAINED FROM THE INDIVIDUAL UTILITIES BEFORE PROCEEDING WITH CONSTRUCTION.

B.M. ELEV.			
00	ISSUED FOR TENDER	25.11.26	RS
NO.	REVISIONS	DATE	BY

**Stantec**

311 Portage Avenue, Winnipeg, Manitoba
Tel 204-489-5900 Fax 204-453-9012

DESIGNED BY	R.S.	CHECKED BY	R.S.
DRAWN BY	A.M.	APPROVED BY	R.S.
HOR. SCALE:	1:750	RELEASED FOR CONSTRUCTION:	S.C.
VERTICAL:			
DATE	25.09.22	DATE	25.11.26

ENGINEER'S SEAL

CONSULTANT DRAWING NO.
C-109



THE CITY OF WINNIPEG
WATER AND WASTE DEPARTMENT

2025 SEWER RENEWALS AND EXTERNAL POINT REPAIRS
CONTRACT 3
MURIEL STREET
MH AT HILLARY CRESCENT TO
1ST MH S OF HILLARY CRESCENT

SHEET	OF
II	24
CAD FILE DRAWING NUMBER 20977c-109.dwg	
CITY DRAWING NUMBER 13701	