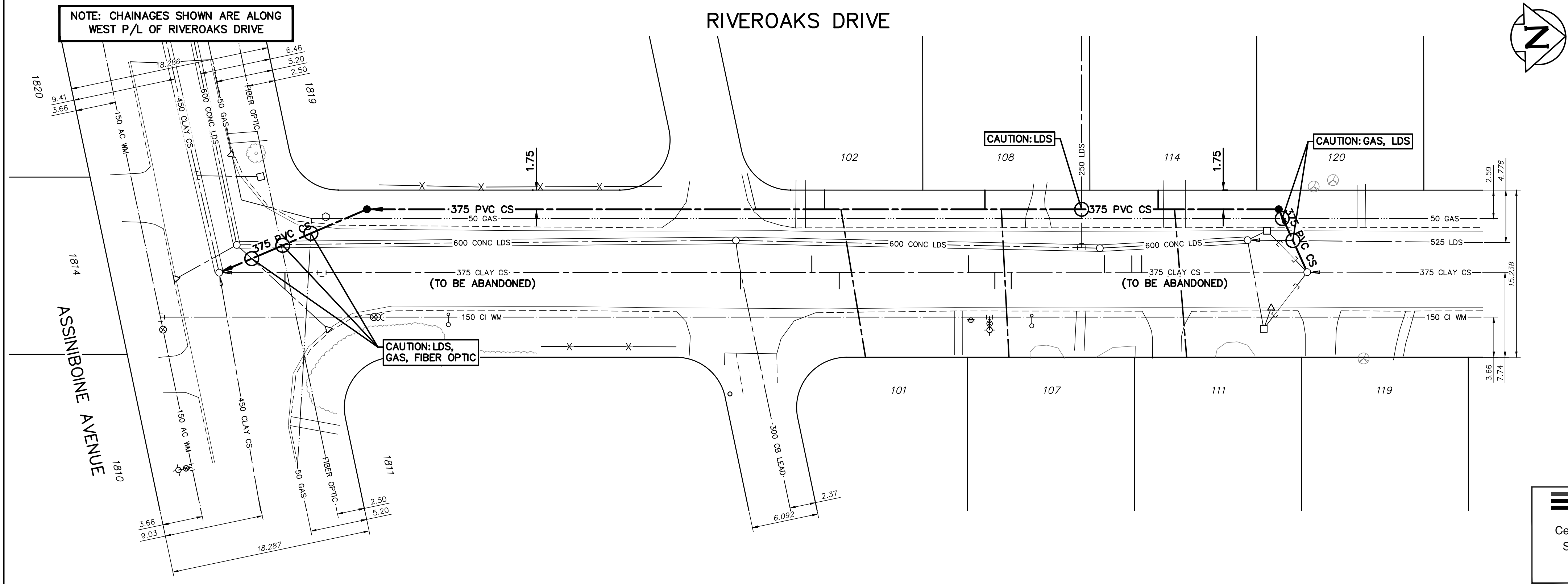


| SEWER SERVICE INFORMATION | | | | | |
|---------------------------|-----------|----------|--------------------------------|----------------------|---------|
| ADDRESS | SIZE (mm) | MATERIAL | P/L DISTANCE | JUNCTION TIE | REMARKS |
| 101 RIVEROAKS | | *UNKNOWN | SEWER JCT MEAS - 57.30 N MH | ASSINIBOINE | |
| 102 RIVEROAKS | | *UNKNOWN | SEWER JCT MEAS - 55.17 N MH | ASSINIBOINE | |
| 107 RIVEROAKS | | *UNKNOWN | SEWER JCT MEAS - 71.93 N MH | ASSINIBOINE | |
| 108 RIVEROAKS | | *UNKNOWN | SEWER JCT MEAS - 69.62 N MH | ASSINIBOINE | |
| 111 RIVEROAKS | | *UNKNOWN | SEWER JCT MEAS - 87.48 N MH | ASSINIBOINE | |
| 114 RIVEROAKS | | *UNKNOWN | SEWER JCT MEAS - 85.16 N MH | ASSINBNE & RIVEROAKS | |
| 119 RIVEROAKS | | *UNKNOWN | SEWER JCT MEAS - 3.20 N 1ST MH | N ASSBNE | |
| 120 RIVEROAKS | | *UNKNOWN | SEWER JCT MEAS - 1.64 N 1ST MH | N ASSBNE | |
| 1810 ASSINIBOINE AVE | 0 | | 6.40 E MH | ASSIN & RIVEROAKS | |
| 1811 ASSINIBOINE AVE | 0 | | 10.06 E MH | AT RIVEROAKS | |
| 1814 ASSINIBOINE AVE | 0 | | 2.74 W MH | ASSIN & RIVEROAKS | |
| 1819 ASSINIBOINE AVE | 0 | | 66.69 E MH | AT PARKVIEW | |
| 1820 ASSINIBOINE AVE | 0 | | 19.35 W MH | ASSIN & RIVEROAKS | |

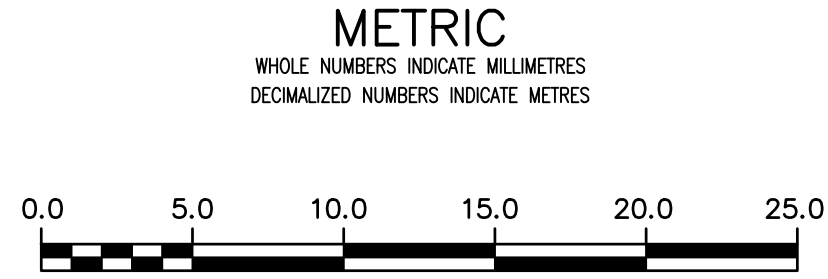
| SEWER JUNCTION INFORMATION FROM SEWER VIDEO INSPECTION | | | |
|--|----------|-------|--|
| SEWER ID S-MA20008796 | | | |
| DISTANCE FROM S-MH20008106 | DIAMETER | CLOCK | |
| 6.0 | 250 | 1:00 | |

| SEWER JUNCTION INFORMATION FROM SEWER VIDEO INSPECTION | | | |
|--|----------|-------|--|
| SEWER ID S-MA20008796 | | | |
| DISTANCE FROM S-MH20008129 | | | |
| DISTANCE | DIAMETER | CLOCK | |
| 12.7 | 150 | 10:00 | |
| 14.4 | 150 | 11:00 | |
| 15.1 | 150 | 2:00 | |
| 16.0 | 150 | 2:00 | |
| 18.5 | 250 | 2:00 | |
| 27.0 | 150 | 10:00 | |
| 28.5 | 150 | 10:00 | |
| 30.9 | 150 | 2:00 | |
| 42.7 | 150 | 10:00 | |
| 45.2 | 150 | 2:00 | |
| 51.7 | 300 | 9:00 | |



**ENGINEERS
GEOSCIENTISTS
MANITOBA**
Certificate of Authorization
Stantec Consulting Ltd.
No. 1301

FOR INDEX SEE
13692



| WARNING | | LOCATION APPROVED UNDERGROUND STRUCTURES | | VERTICAL DATUM: CGVD28 (HT2.0 Geoid) HORIZONTAL DATUM: NAD83 (June 1990), Zone 14 | | | | ENGINEER'S SEAL | |
|---|--|---|--|--|--|--|--|---|--|
| IF POWER EQUIPMENT OR EXPLOSIVES ARE TO BE USED FOR EXCAVATION ON THIS PROJECT THE CONTRACTOR MUST: | | SUPV. U/G STRUCTURES COMMITTEE | | | | DESIGNED BY R.S. | | CHECKED BY R.S. | |
| 1) NOTIFY THE GAS COMPANY OF THE PROPOSED LOCATION OF EXCAVATION. | | NOTE: | | | | DRAWN BY A.M. | | APPROVED BY R.S. | |
| 2) TAKE PRECAUTION TO AVOID DAMAGE TO GAS COMPANY INSTALLATIONS. | | LOCATION OF UNDERGROUND STRUCTURES AS SHOWN ARE BASED ON THE BEST INFORMATION AVAILABLE BUT NO GUARANTEE IS GIVEN THAT ALL EXISTING UTILITIES ARE EXACT. CONFIRMATION OF EXISTENCE AND EXACT LOCATION OF ALL SERVICES MUST BE OBTAINED FROM THE INDIVIDUAL UTILITIES BEFORE PROCEEDING WITH CONSTRUCTION. | | | | SCALE: HORIZONTAL 1:250 VERTICAL 1:50 | | RELEASED FOR CONSTRUCTION S.C. | |
| SEE PROVINCIAL REGULATION 210/72 FOR DETAILS | | | | 00 ISSUED FOR TENDER 2025.11.26 R.S. | | DATE 2025.10.10 | | DATE 2025.11.26 | |
| | | | | NO. REVISIONS | | PLOT DATE: 2025 11 26 | | CONSULTANT DRAWING NUMBER C-205 | |
| | | | | | | TENDER NUMBER: 935-2025 CONTRACT NUMBER: 3 | | FILE PATH: c:\users\amonnesh\dc\accdocs\stantec consulting\111220977_c3_cow_2025_apr\project files\01_wip\04_civil\sheet_files\20977c-205 | |

THE CITY OF WINNIPEG
WATER AND WASTE DEPARTMENT
ENGINEERING DIVISION

2025 SEWER RENEWALS AND EXTERNAL POINT REPAIRS
CONTRACT 3
RIVEROAKS DRIVE
88.91 N OF ASSINIBOINE AVENUE TO
MH AT ASSINIBOINE AVENUE

SHEET **24** OF **24**
CITY DRAWING NUMBER
13714