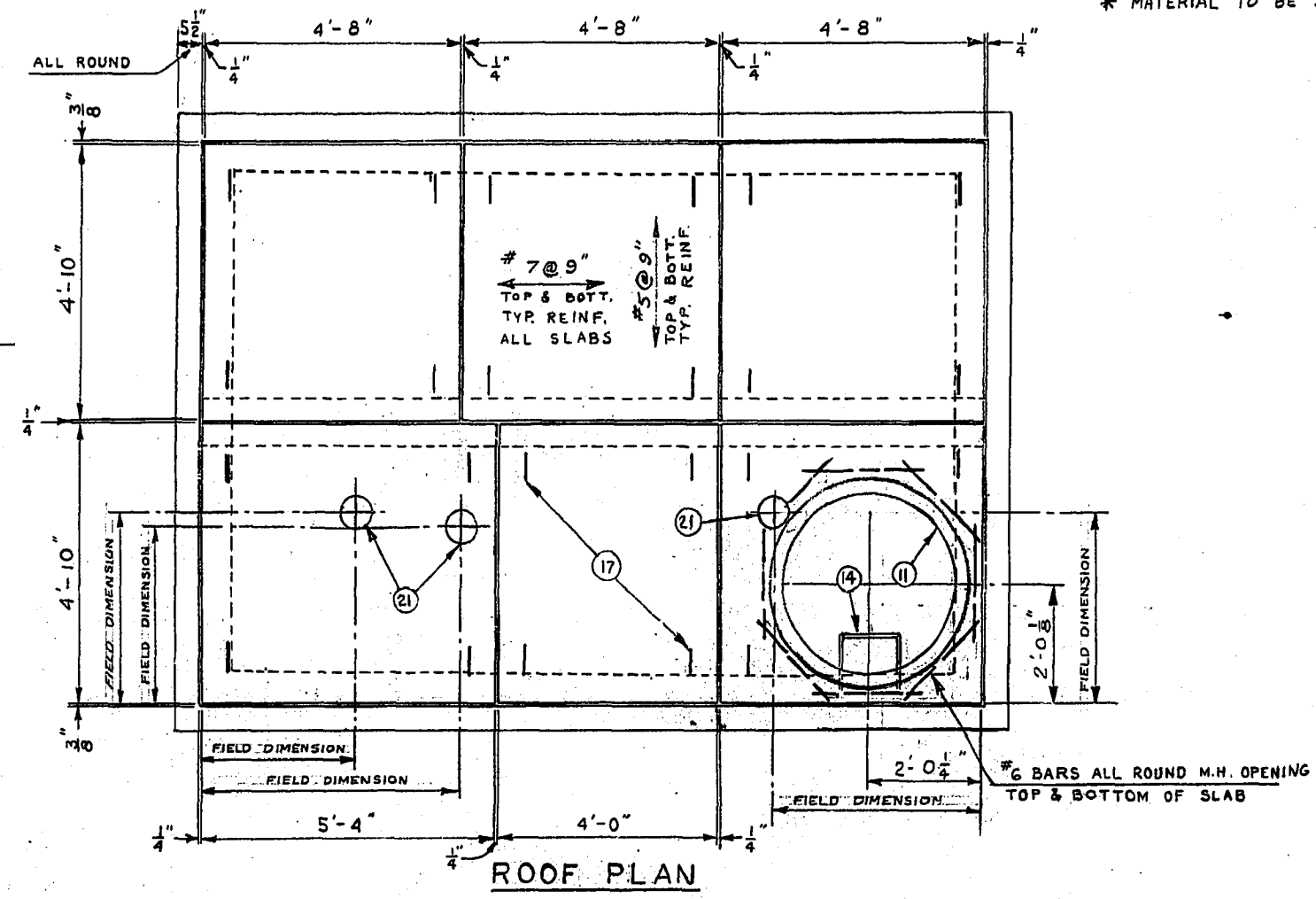
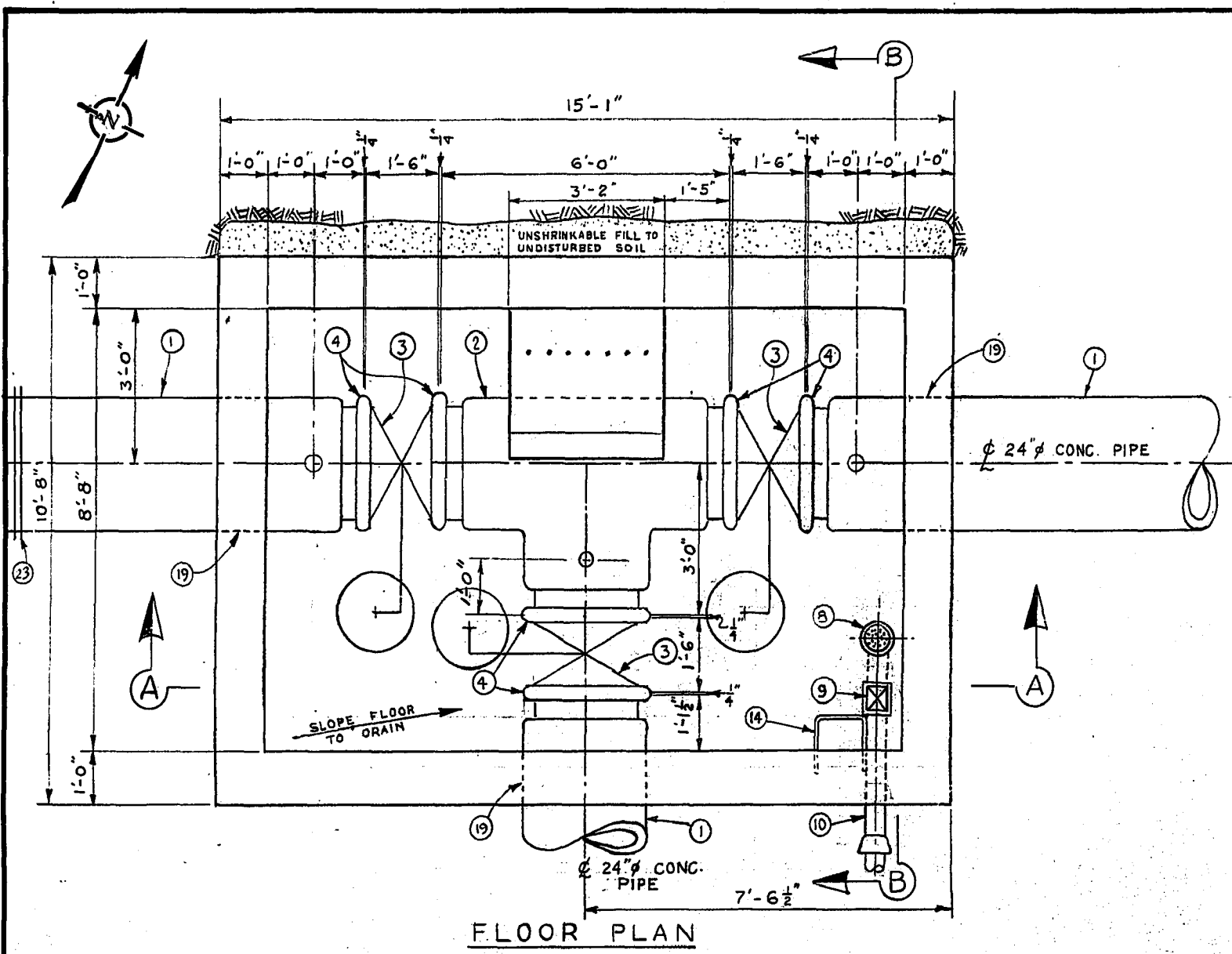
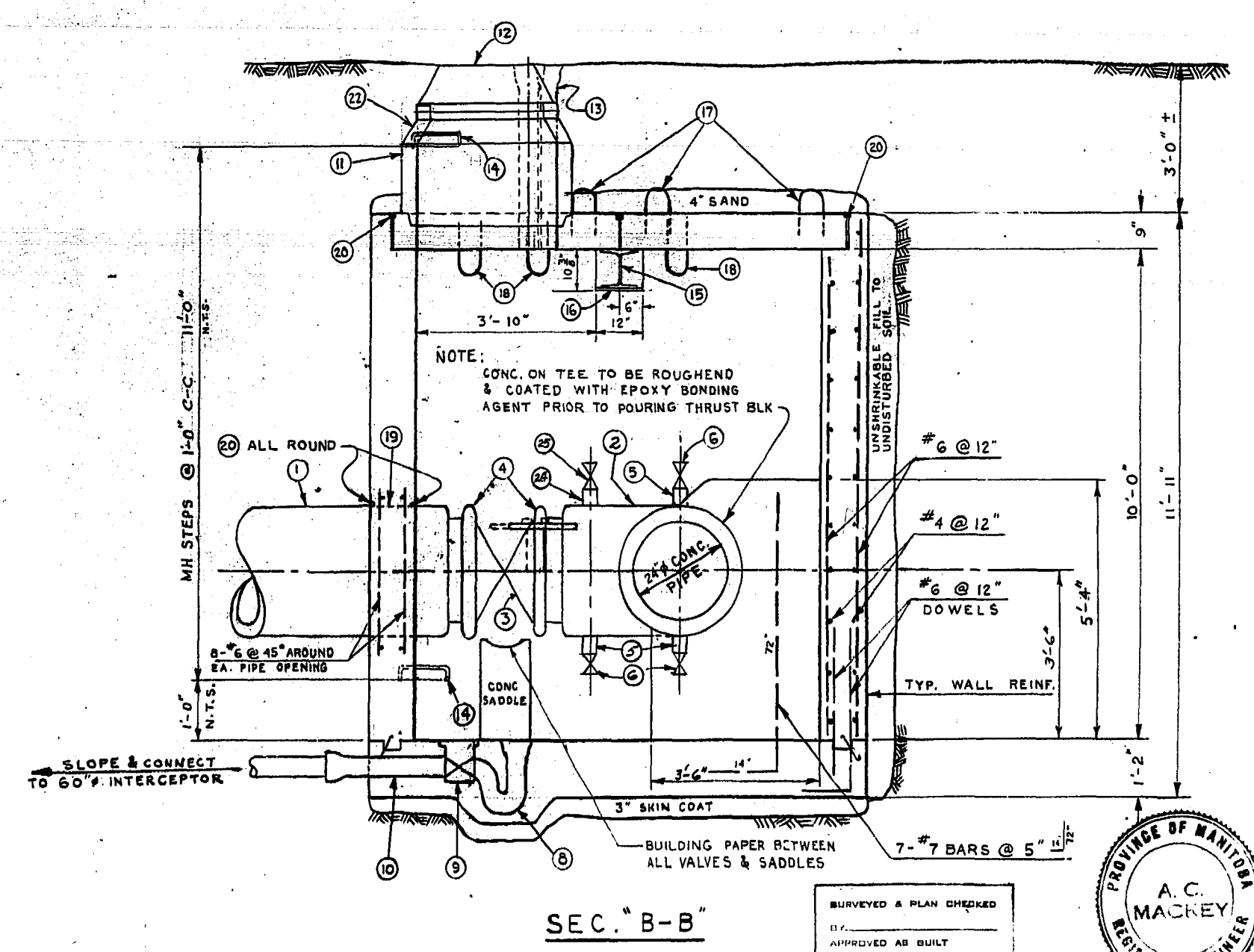
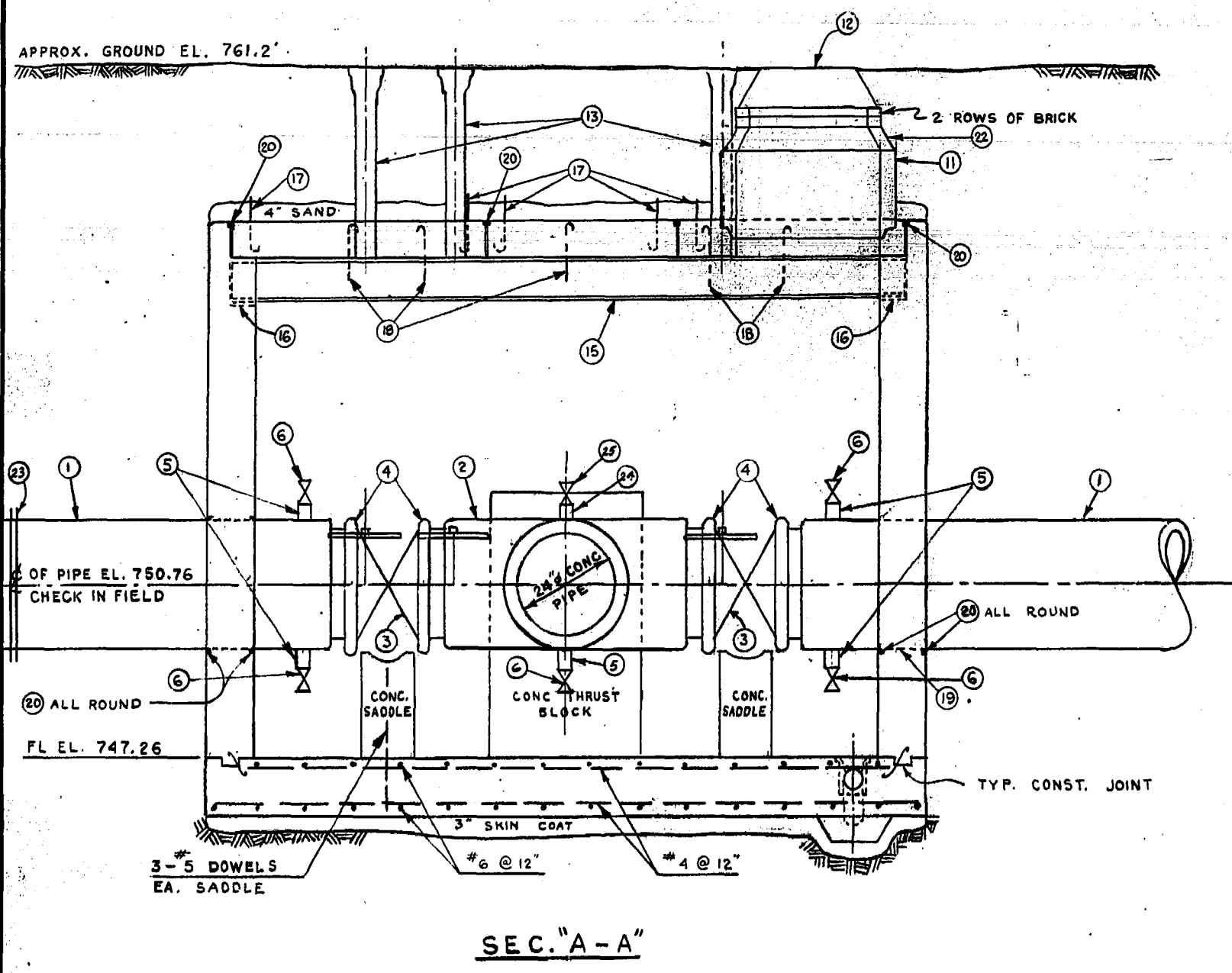


Appendix 'A' – Record Drawings



NOTES

- 1/4" GAP BETWEEN FITTINGS AT VICTAULIC COUPLINGS.
- * MATERIAL TO BE SUPPLIED BY CITY.



| MATERIAL LIST | | | | |
|---------------|---|-------------------|-----|-----------------|
| NO. | DESCRIPTION | SIZE | AMT | DETAIL DWG. NO. |
| 1 | CONC. PIPE - C' LONG | 24" | 1 | |
| 2 | CONC. TEE (VICTAULIC ENDS) | 24"x24" | 1 | |
| 3 | BUTTERFLY VALVES (VICT. ENDS) | 24" | 3 | |
| 4 | VICTAULIC COUPLINGS STYLE 44 | 24" | 6 | |
| 5 | BRONZE NIPPLES (SCREWED ENDS) | 3" | 5 | |
| 6 | BRONZE GATE VALVES (SCREWED ENDS) | 3" | 5 | |
| 8 | C.I. FLOOR DRAIN 1/2" SCREW ON COVER | 4" | 1 | |
| 9 | BACK WATER VALVE | 4" | 1 | |
| 10 | C.I. PIPE SPIGOT TO BELL | 4"x2'-6" | 1 | |
| 11 | PRECAST CONC. MH SEC. (C-76 CLASS II) | 36" | 1 | |
| 12 | STD. METRO W.W. MH FRAME & COVER | 30" | 1 | A-796 |
| 13 | ADJ. VALVE BOX W/STD. METRO WW COVER | LARGE | 3 | A-798 |
| 14 | STD. MH. STEPS | 3/4" BAR | 1 | A-817 |
| 15 | STEEL BEAM | 10WF49 | 1 | |
| 16 | BEARING PLATE | 10x6x3/8 | 2 | |
| 17 | LIFTING LUGS (4 PER SLAB) | 3/4" | 24 | A-878 |
| 18 | U-BOLT HOOKS (2 PER VALVE) | 3/4" | 6 | A-877 |
| 19 | DRY SPUN HEMP WRAPPED AROUND PIPE BETWEEN NOTCHES IN WALL | 1" | 3 | |
| 20 | DUCT SEAL JOINT | 1" | 1 | A-874 |
| 21 | VALVE BOX OPENINGS | TO SUIT VALVE BOX | 3 | |
| 22 | MANHOLE REDUCER PRECAST CONC. C-76 CLASS II | 36"x30" | 1 | |
| 23 | DRESSER COUPLING | 24" | 1 | |
| 24 | BRONZE NIPPLE (SCREWED ENDS) | 2" | 1 | |
| 25 | BRONZE GATE VALVE (SCREWED ENDS) | 2" | 1 | |

| NO. | DESCRIPTION | DATE | BY |
|-----------|-------------|------|----|
| REVISIONS | | | |

The City of Winnipeg

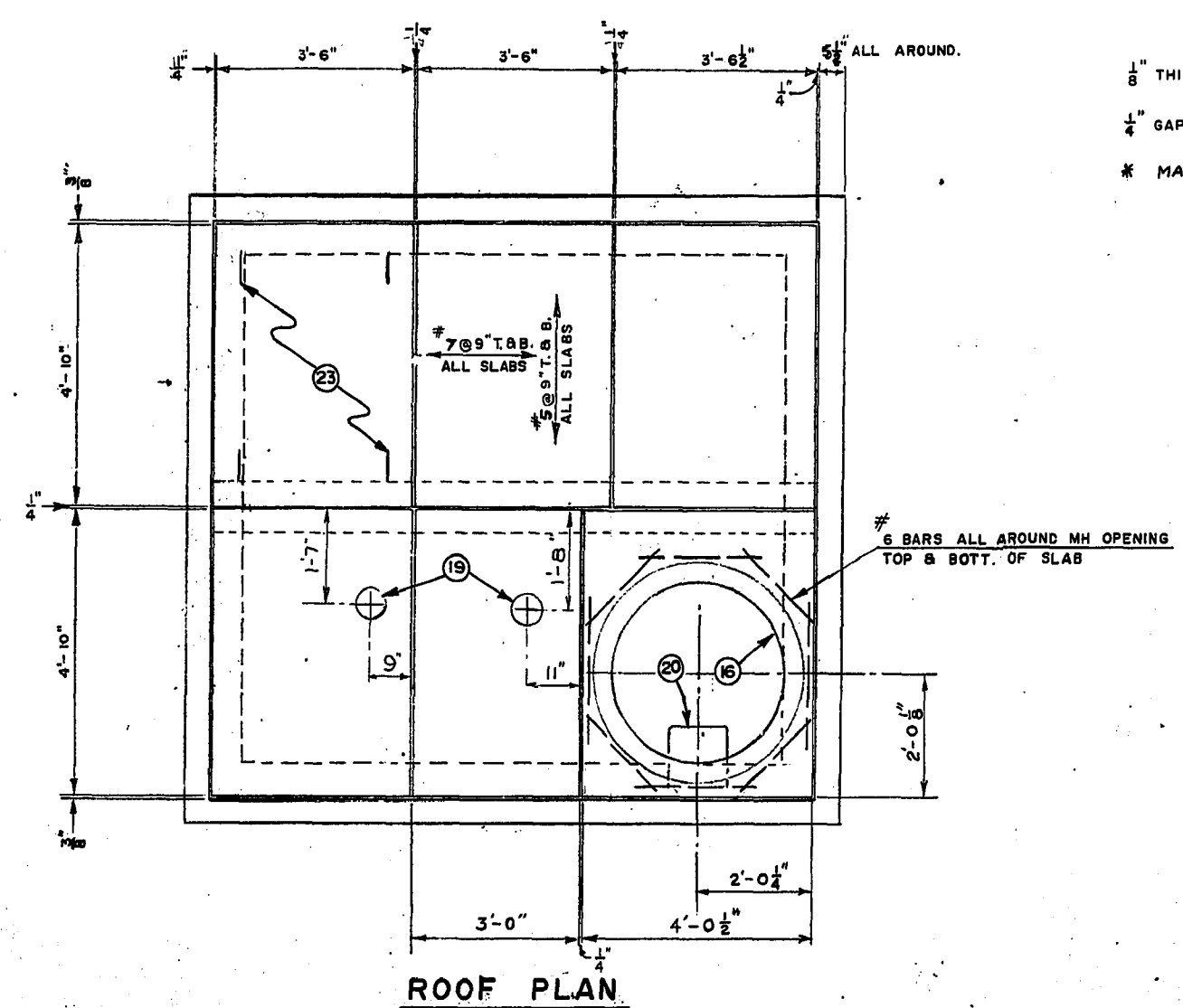
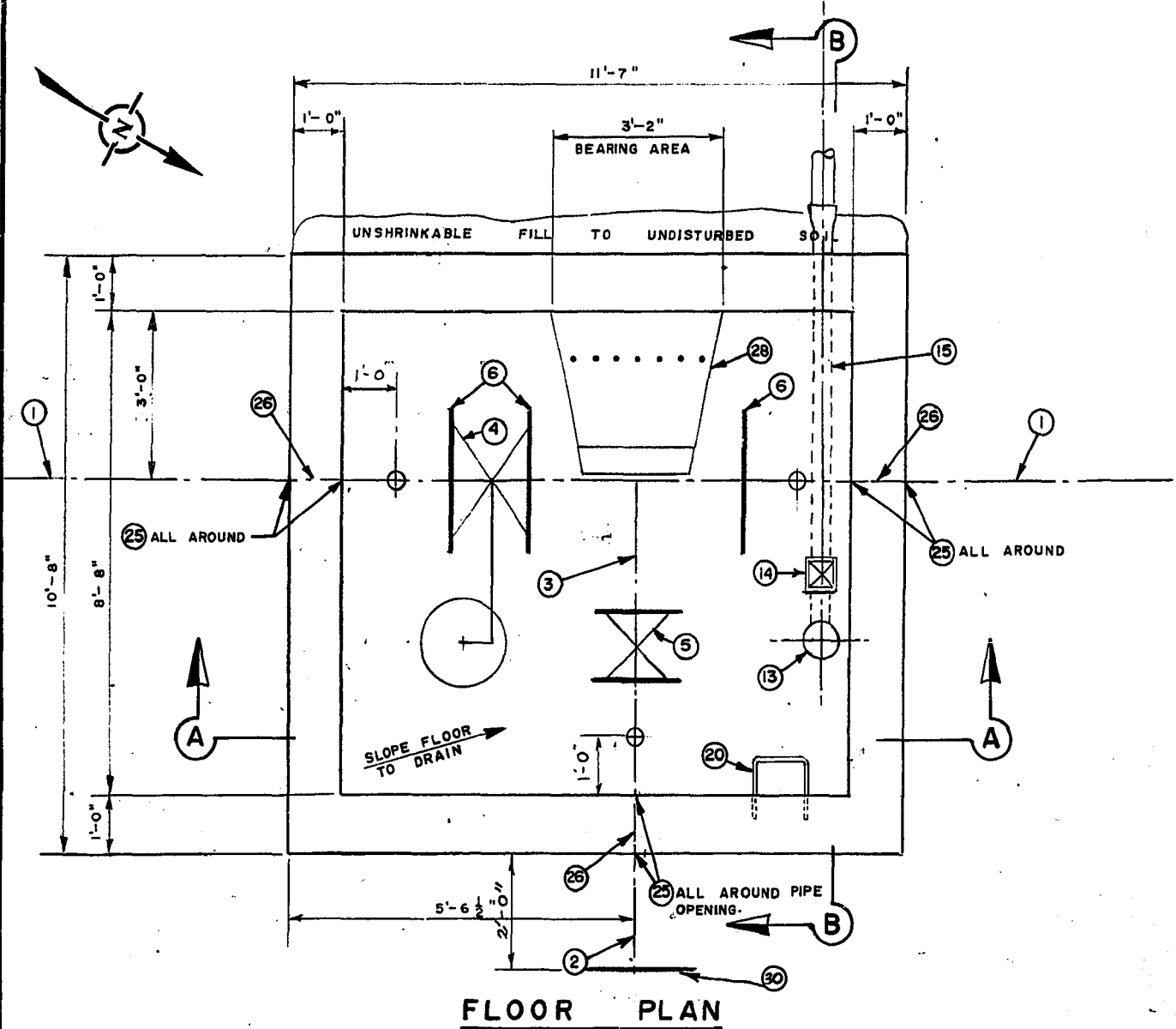
DEPARTMENT: WATERWORKS (METRO)

SOUTH ST. VITAL FEEDERMAIN OFFTAKE CHAMBER STA. 0+00

| | |
|-----------------------------------|------------------------------|
| DESIGNED BY A.C. MACKEY | DRAWN BY H. BUXMAN |
| CHECKED BY | DATE 14 JULY 72 |
| APPROVED BY <i>[Signature]</i> | |
| SCALE 1/2" = 1'-0" | DRAWING NO. D-1245 |

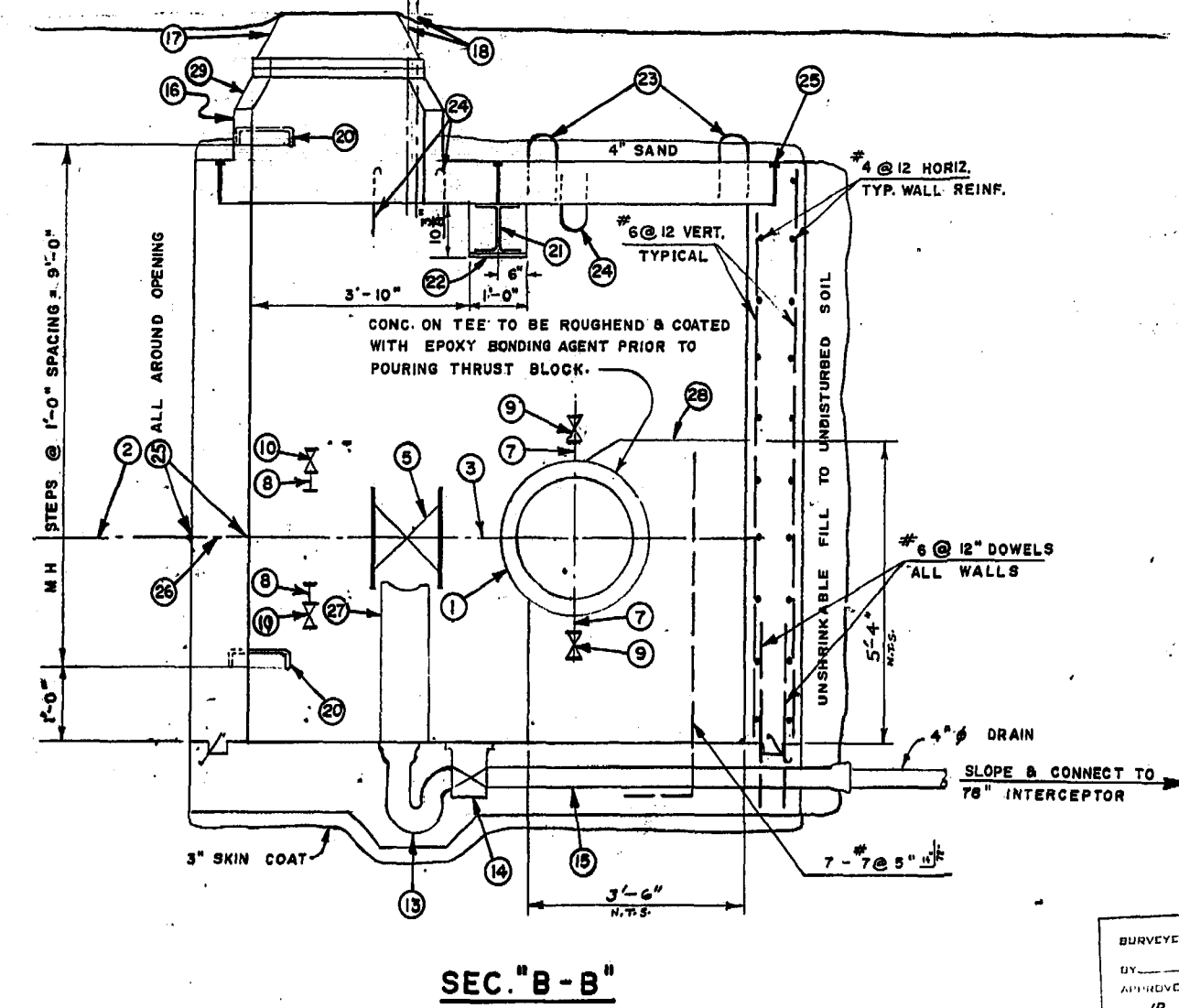
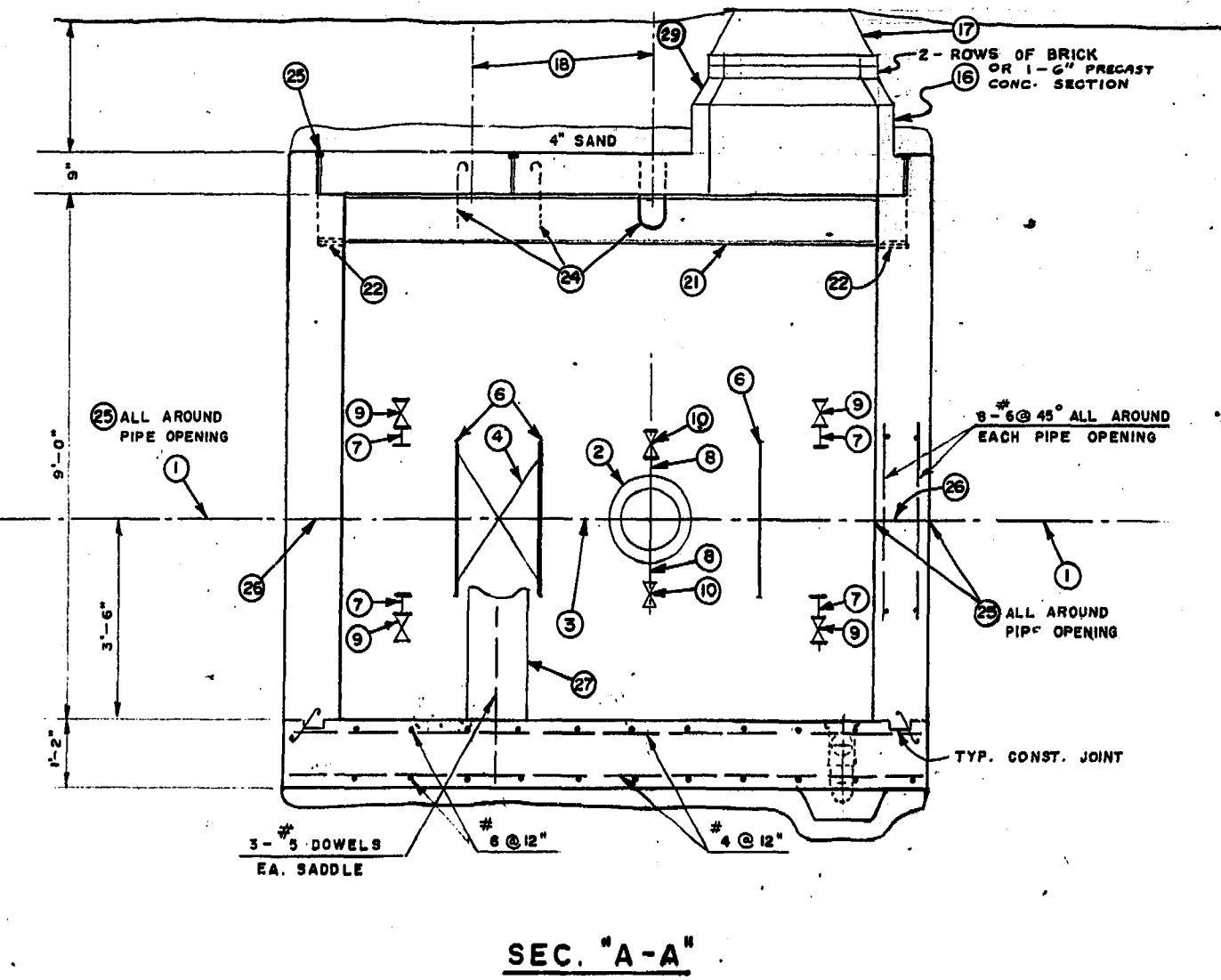


SURVEYED & PLAN CHECKED
BY
APPROVED AS BUILT
JUN 19 1974



NOTES

- 1/8" THICK GASKETS BETWEEN ALL FLANGED FITTINGS.
- 1/4" GAP BETWEEN FITTINGS AT VICTAULIC COUPLINGS.
- * MATERIAL TO BE SUPPLIED BY CITY.



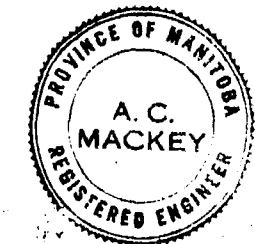
| MATERIAL LIST | | | | |
|---------------|--|---------------|-----|-----------------|
| NO | DESCRIPTION | SIZE | AMT | DETAIL DWG. NO. |
| 1 | CONC PIPE 2' LONG | 24" | 1 | |
| 2 | C.I. PIPE C/W PLUG. | 12" | 1 | |
| 3 | CONC TEE (VICTAULIC ENDS) | 24"x24"x12" | 1 | |
| 4 | BUTTERFLY VALVE (VICT ENDS) | 24" | 1 | |
| 5 | GATE VALVE (FLANGED ENDS) | 12" | 1 | |
| 6 | VICT. COUPLINGS - STYLE #44 | 24" | 3 | |
| 7 | BRONZE NIPPLES (SCREWED ENDS) | 3" | 4 | |
| 8 | do | 2" | 2 | |
| 9 | BRONZE GATE VALVES (SCREWED ENDS) | 3" | 4 | |
| 10 | do | 2" | 2 | |
| | | 3" | 2 | |
| | | 2" | 1 | |
| 13 | C.I. FLOOR DRAIN C/W SCREW ON COVER | 4" | 1 | |
| 14 | BACKWATER VALVE | 4" | 1 | |
| 15 | C.I. PIPE SPIGOT TO BELL APPROX. 6'-6" LG. | 4" | 1 | |
| 16 | PRECAST MANHOLE SEC. | 30" | 1 | |
| | C-76 CLASS II | | 1 | |
| 17 | STD. METRO WATERWORKS M.H. FRAME AND COVER | 30" | 1 | A-796 |
| 18 | ADJ. VALVE BOX W/ STD. METRO W.W. COVER | LARGE | 2 | A-798 |
| 19 | VALVE BOX OPENINGS | do | 2 | |
| 20 | MANHOLE STEPS | 3" BAR | 1 | A-817 |
| 21 | STEEL BEAM | 10" WF 49 | 1 | |
| 22 | BEARING R's. | 10"x6"x3" | 2 | |
| 23 | LIFTING LUGS 4 PER SLAB | 3" BAR | 24 | A-878 |
| 24 | U-BOLT HOOKS 2 PER VALVE | do | 4 | A-877 |
| 25 | DUCT SEAL JOINT | 1" | 1 | A-874 |
| 26 | DRY SPUN HEMP WRAPPED AROUND CONC. PIPE BETWEEN DUCT SEAL JOINTS IN WALL | 1" | 2 | |
| 27 | CONC. SADDLE WITH BLDG. PAPER BETWEEN VALVE & SADDLE. | TO SUIT VALVE | 2 | |
| 28 | CONC. THRUST BLOCK 5'-4" x 3'-6" x 3'-2" | 3'-2" | 1 | |
| 29 | MANHOLE REDUCER PRECAST CONCRETE C-76, CLASS II | 36"x30" | 1 | |
| 30 | 2" PLYWOOD BULKHEAD | | | |

The City of Winnipeg

DEPARTMENT
WATERWORKS (METRO)

**SOUTH ST. VITAL FEEDERMAIN
OFFTAKE CHAMBER
STA. 85+38.82**

| | |
|---|---|
| DESIGNED BY A. C. MACKEY CHECKED BY APPROVED BY SCALE 1/2" = 1'-0" | DRAWN BY H. BUXMAN DATE 18 JULY 72 DRAWING NO. D-1246 |
|---|---|



SURVEYED & PLAN CHECKED
BY
APPROVED AS BUILT
BY
JUN 19 1974

MICROFILMED mar77