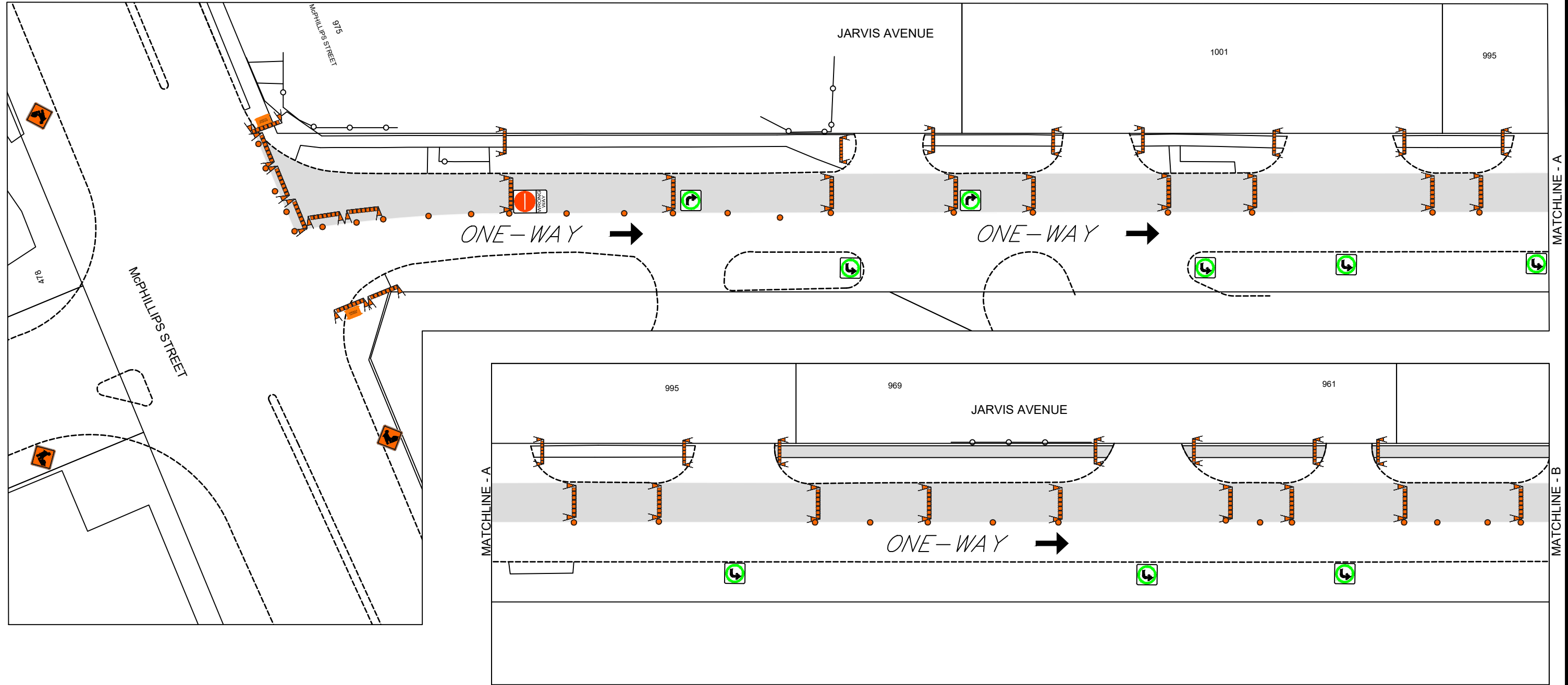


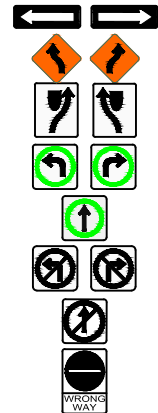
APPENDIX 'B' – TEMPORARY TRAFFIC CONTROL SIGNAGE DRAWINGS

STAGE 1



TRAFFIC SIGNAGE

WORK AREA / CLOSED AREA		RB-21 (L/R) ONE-WAY TRAFFIC	
DIRECTION OF TRAFFIC LANE		TC-15 (L/R) ROAD REALIGNMENT	
TC-2 ROADWORK		RB-25 (L/R) KEEP LEFT/KEEP RIGHT	
TC-63 CHANNELIZATION BARREL		RB-14 (L/R) LEFT TURN/RIGHT TURN	
TALL CONE (POLY POST)		RB-15 THROUGH TRAFFIC ONLY	
ROAD CLOSED SIGN		RB-11 (L/R) TURN PROHIBITED	
SIDEWALK CLOSED SIGN		RB-10 THROUGH TRAFFIC PROHIBITED	
ADVANCED SIDEWALK CLOSURE SIGN		RB-23 DO NOT ENTER	



NOTES:

1. ALL TRAFFIC SIGNAGE AND TEMPORARY TRAFFIC CONTROL TO CONFORM WITH THE LATEST REVISION OF THE CITY OF WINNIPEG MANUAL OF TEMPORARY TRAFFIC CONTROL ON CITY STREETS.
2. CONTRACTOR SHALL MAINTAIN SAFE PEDESTRIAN ACCESS AND CROSSINGS. WHERE SIDEWALKS ARE LOCATED ON BOTH SIDES OF THE STREET, CONTRACTOR MUST MAINTAIN PEDESTRIAN ACCESS ON ONE SIDE AT ALL TIMES. CONTRACTOR MUST SUBMIT A SITE ACCESSIBILITY PLAN.
3. CONSTRUCTION TO BE COMPLETED LANE AT A TIME WITH TRAFFIC TO BE MAINTAINED IN ONE DIRECTION.
4. ACCESS TO PUBLIC LANES TO BE MAINTAINED AT ALL TIMES DURING CONSTRUCTION EXCEPT DURING ASPHALT OPERATIONS.
5. PARKING TO BE REMOVED AT TIME OF CONSTRUCTION.
6. ALL TRAFFIC SIGNAGE ON THIS DRAWING IS IN REPRESENTATIVE LOCATION. FOR PROPER SPACING REFER TO THE MANUAL OF TEMPORARY TRAFFIC CONTROL.

ENGINEERING DIVISION
TECHNOLOGY SERVICES BRANCH
106 - 1155 PACIFIC AVE

FOR INFORMATION ONLY

TENDER NO. 12-2026

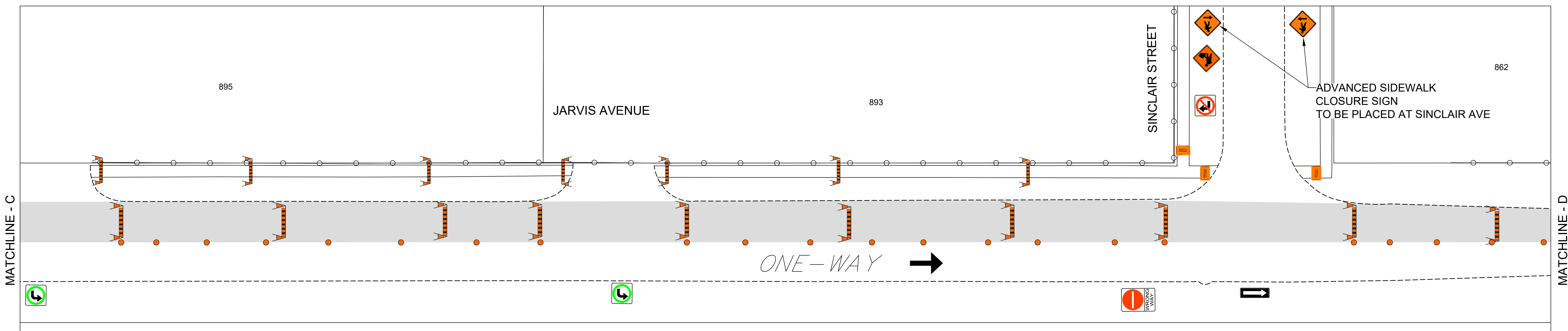
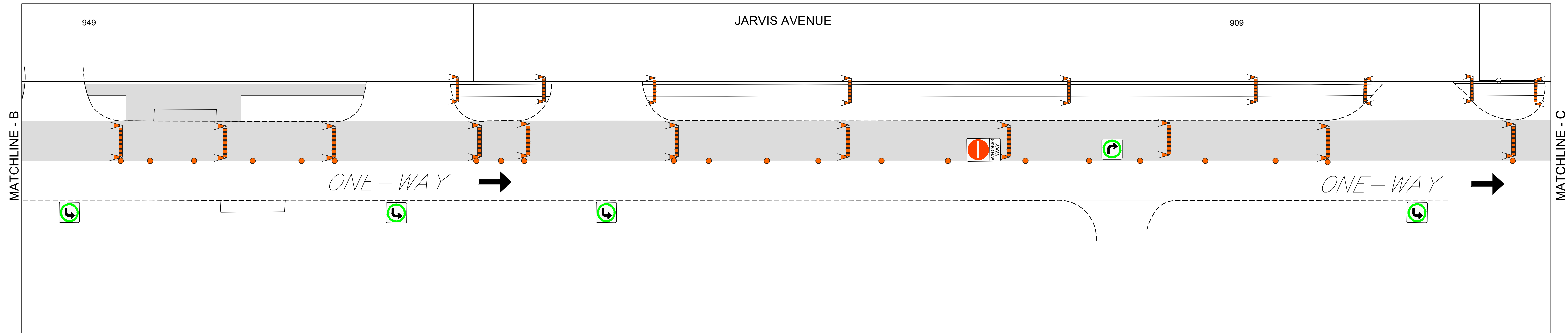


THE CITY OF WINNIPEG
PUBLIC WORKS DEPARTMENT

JARVIS AVENUE STAGE 1
FROM McPHILLIPS ST TO PARR ST
TEMPORARY TRAFFIC SIGNAGE



STAGE 1



TRAFFIC SIGNAGE

WORK AREA / CLOSED AREA		RB-21 (L/R) ONE-WAY TRAFFIC	
DIRECTION OF TRAFFIC LANE		TC-15 (L/R) ROAD REALIGNMENT	
TC-2 ROADWORK		RB-25 (L/R) KEEP LEFT/KEEP RIGHT	
TC-63 CHANNELIZATION BARREL		RB-14 (L/R) LEFT TURN/RIGHT TURN	
TALL CONE (POLY POST)		RB-15 THROUGH TRAFFIC ONLY	
ROAD CLOSED SIGN		RB-11 (L/R) TURN PROHIBITED	
SIDEWALK CLOSED SIGN		RB-10 THROUGH TRAFFIC PROHIBITED	
ADVANCED SIDEWALK CLOSURE SIGN		RB-23 DO NOT ENTER	

NOTES:

1. ALL TRAFFIC SIGNAGE AND TEMPORARY TRAFFIC CONTROL TO CONFORM WITH THE LATEST REVISION OF THE CITY OF WINNIPEG MANUAL OF TEMPORARY TRAFFIC CONTROL ON CITY STREETS.
2. CONTRACTOR SHALL MAINTAIN SAFE PEDESTRIAN ACCESS AND CROSSINGS. WHERE SIDEWALKS ARE LOCATED ON BOTH SIDES OF THE STREET, CONTRACTOR MUST MAINTAIN PEDESTRIAN ACCESS ON ONE SIDE AT ALL TIMES. CONTRACTOR MUST SUBMIT A SITE ACCESSIBILITY PLAN.
3. CONSTRUCTION TO BE COMPLETED LANE AT A TIME WITH TRAFFIC TO BE MAINTAINED IN ONE DIRECTION.
4. ACCESS TO PUBLIC LANES TO BE MAINTAINED AT ALL TIMES DURING CONSTRUCTION EXCEPT DURING ASPHALT OPERATIONS.
5. PARKING TO BE REMOVED AT TIME OF CONSTRUCTION.
6. ALL TRAFFIC SIGNAGE ON THIS DRAWING IS IN REPRESENTATIVE LOCATION. FOR PROPER SPACING REFER TO THE MANUAL OF TEMPORARY TRAFFIC CONTROL.

ENGINEERING DIVISION
TECHNOLOGY SERVICES BRANCH
106 - 1155 PACIFIC AVE

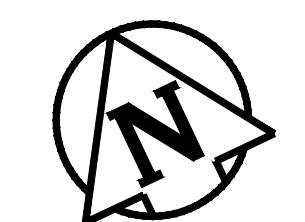
FOR INFORMATION ONLY

TENDER NO. 12-2026

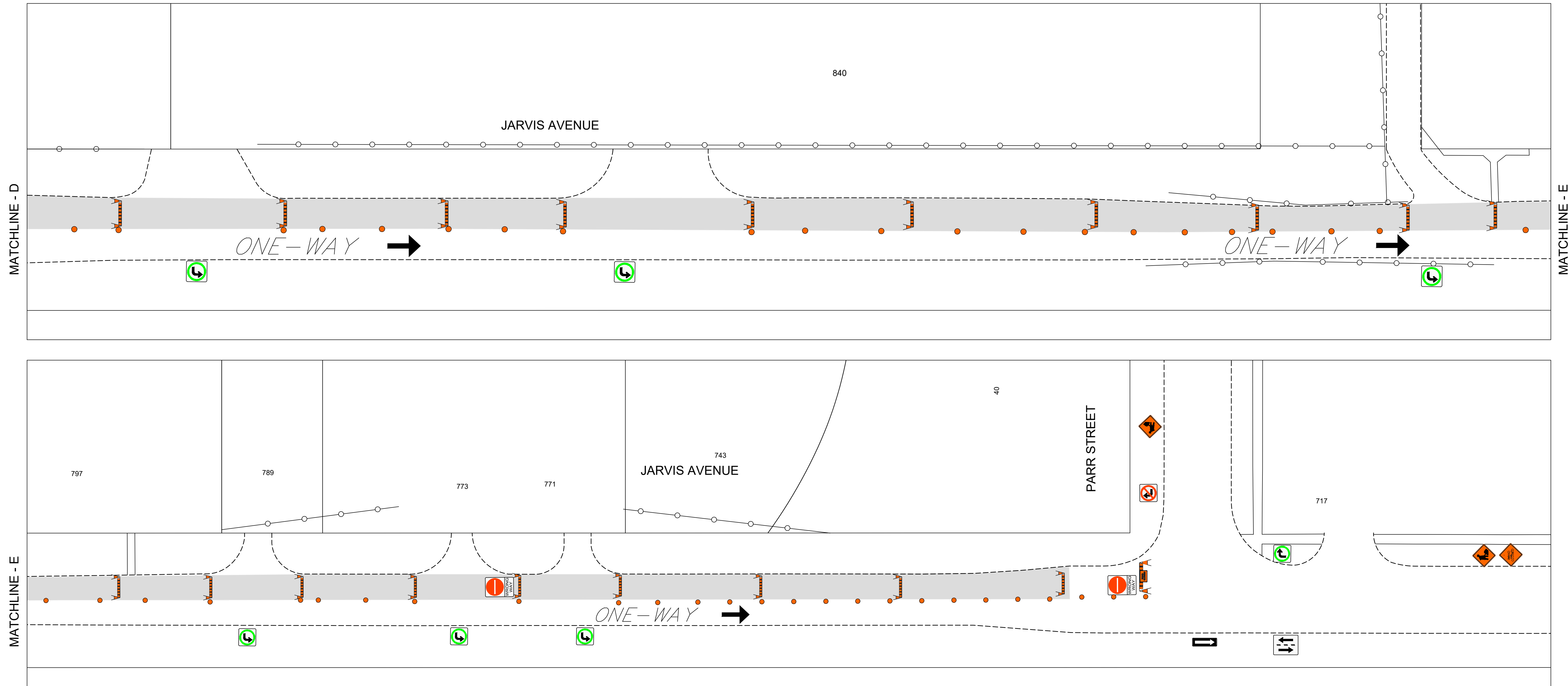


THE CITY OF WINNIPEG
PUBLIC WORKS DEPARTMENT

JARVIS AVENUE STAGE 1
FROM McPHILLIPS ST TO PARR ST
TEMPORARY TRAFFIC SIGNAGE



STAGE 1



TRAFFIC SIGNAGE

WORK AREA / CLOSED AREA		RB-21 (L/R) ONE-WAY TRAFFIC	
DIRECTION OF TRAFFIC LANE		TC-15 (L/R) ROAD REALIGNMENT	
TC-2 ROADWORK		RB-25 (L/R) KEEP LEFT/KEEP RIGHT	
TC-63 CHANNELIZATION BARREL		RB-14 (L/R) LEFT TURN/RIGHT TURN	
TALL CONE (POLY POST)		RB-15 THROUGH TRAFFIC ONLY	
ROAD CLOSED SIGN		RB-11 (L/R) TURN PROHIBITED	
SIDEWALK CLOSED SIGN		RB-10 THROUGH TRAFFIC PROHIBITED	
ADVANCED SIDEWALK CLOSURE SIGN		RB-23 DO NOT ENTER	

NOTES:

1. ALL TRAFFIC SIGNAGE AND TEMPORARY TRAFFIC CONTROL TO CONFORM WITH THE LATEST REVISION OF THE CITY OF WINNIPEG MANUAL OF TEMPORARY TRAFFIC CONTROL ON CITY STREETS.
2. CONTRACTOR SHALL MAINTAIN SAFE PEDESTRIAN ACCESS AND CROSSINGS. WHERE SIDEWALKS ARE LOCATED ON BOTH SIDES OF THE STREET, CONTRACTOR MUST MAINTAIN PEDESTRIAN ACCESS ON ONE SIDE AT ALL TIMES. CONTRACTOR MUST SUBMIT A SITE ACCESSIBILITY PLAN.
3. CONSTRUCTION TO BE COMPLETED LANE AT A TIME WITH TRAFFIC TO BE MAINTAINED IN ONE DIRECTION.
4. ACCESS TO PUBLIC LANES TO BE MAINTAINED AT ALL TIMES DURING CONSTRUCTION EXCEPT DURING ASPHALT OPERATIONS.
5. PARKING TO BE REMOVED AT TIME OF CONSTRUCTION.
6. ALL TRAFFIC SIGNAGE ON THIS DRAWING IS IN REPRESENTATIVE LOCATION. FOR PROPER SPACING REFER TO THE MANUAL OF TEMPORARY TRAFFIC CONTROL.

ENGINEERING DIVISION
TECHNOLOGY SERVICES BRANCH
106 - 1155 PACIFIC AVE

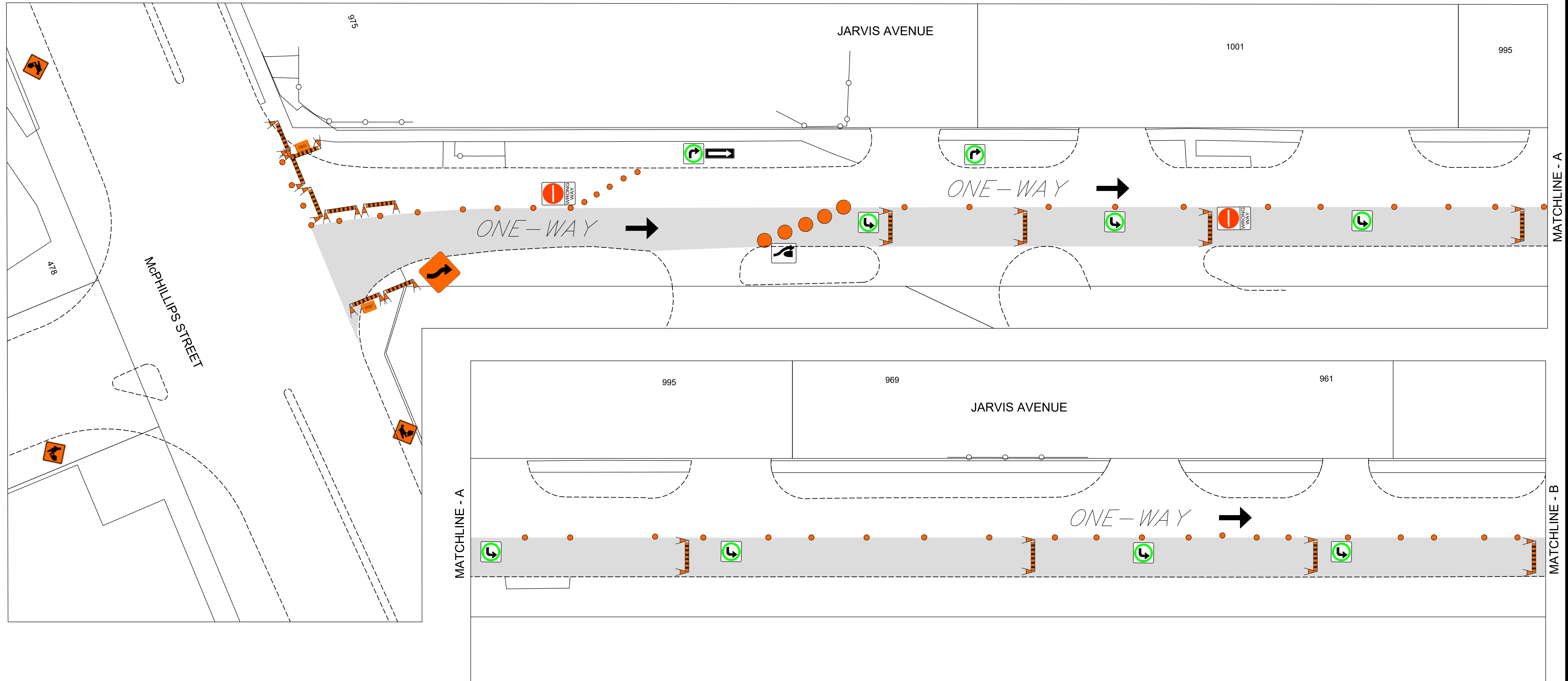
TENDER NO. 12-2026

FOR INFORMATION ONLY

THE CITY OF WINNIPEG
PUBLIC WORKS DEPARTMENT

JARVIS AVENUE STAGE 1
FROM McPHILLIPS ST TO PARR ST
TEMPORARY TRAFFIC SIGNAGE

STAGE 2



TRAFFIC SIGNAGE

WORK AREA / CLOSED AREA		RB-21 (L/R) ONE-WAY TRAFFIC	
DIRECTION OF TRAFFIC LANE		TC-15 (L/R) ROAD REALIGNMENT	
TC-2 ROADWORK		RB-25 (L/R) KEEP LEFT/KEEP RIGHT	
TC-63 CHANNELIZATION BARREL		RB-14 (L/R) LEFT TURN/RIGHT TURN	
TALL CONE (POLY POST)		RB-15 THROUGH TRAFFIC ONLY	
ROAD CLOSED SIGN		RB-11 (L/R) TURN PROHIBITED	
SIDEWALK CLOSED SIGN		RB-10 THROUGH TRAFFIC PROHIBITED	
ADVANCED SIDEWALK CLOSURE SIGN		RB-23 DO NOT ENTER	

NOTES:

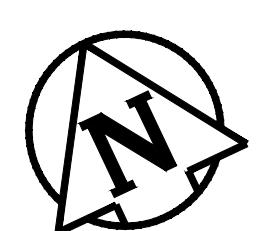
1. ALL TRAFFIC SIGNAGE AND TEMPORARY TRAFFIC CONTROL TO CONFORM WITH THE LATEST REVISION OF THE CITY OF WINNIPEG MANUAL OF TEMPORARY TRAFFIC CONTROL ON CITY STREETS.
2. CONTRACTOR SHALL MAINTAIN SAFE PEDESTRIAN ACCESS AND CROSSINGS. WHERE SIDEWALKS ARE LOCATED ON BOTH SIDES OF THE STREET, CONTRACTOR MUST MAINTAIN PEDESTRIAN ACCESS ON ONE SIDE AT ALL TIMES. CONTRACTOR MUST SUBMIT A SITE ACCESSIBILITY PLAN.
3. CONSTRUCTION TO BE COMPLETED LANE AT A TIME WITH TRAFFIC TO BE MAINTAINED IN ONE DIRECTION.
4. ACCESS TO PUBLIC LANES TO BE MAINTAINED AT ALL TIMES DURING CONSTRUCTION EXCEPT DURING ASPHALT OPERATIONS.
5. PARKING TO BE REMOVED AT TIME OF CONSTRUCTION.
6. ALL TRAFFIC SIGNAGE ON THIS DRAWING IS IN REPRESENTATIVE LOCATION. FOR PROPER SPACING REFER TO THE MANUAL OF TEMPORARY TRAFFIC CONTROL.

ENGINEERING DIVISION
TECHNOLOGY SERVICES BRANCH
106 - 1155 PACIFIC AVE

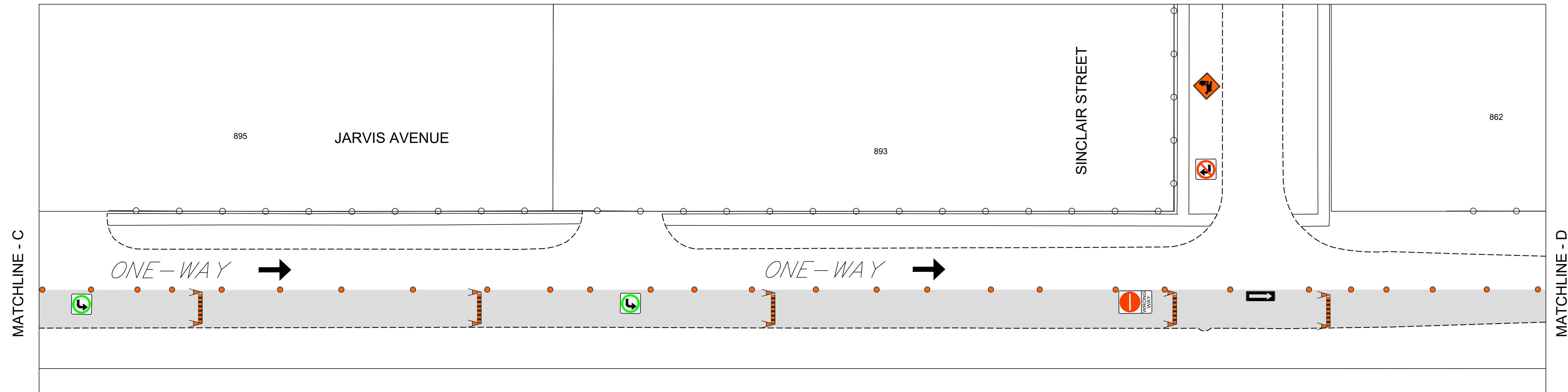
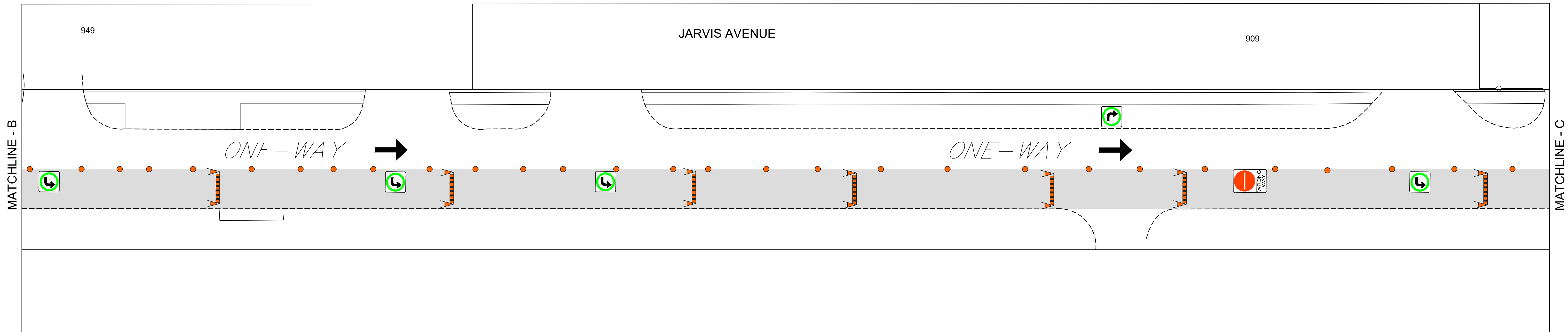
FOR INFORMATION ONLY TENDER NO. 12-2026

THE CITY OF WINNIPEG
PUBLIC WORKS DEPARTMENT

JARVIS AVENUE STAGE 2
FROM McPHILLIPS ST TO PARR ST
TEMPORARY TRAFFIC SIGNAGE



STAGE 2



TRAFFIC SIGNAGE

WORK AREA / CLOSED AREA		RB-21 (L/R) ONE-WAY TRAFFIC	
DIRECTION OF TRAFFIC LANE		TC-15 (L/R) ROAD REALIGNMENT	
TC-2 ROADWORK		RB-25 (L/R) KEEP LEFT/KEEP RIGHT	
TC-63 CHANNELIZATION BARREL		RB-14 (L/R) LEFT TURN/RIGHT TURN	
TALL CONE (POLY POST)		RB-15 THROUGH TRAFFIC ONLY	
ROAD CLOSED SIGN		RB-11 (L/R) TURN PROHIBITED	
SIDEWALK CLOSED SIGN		RB-10 THROUGH TRAFFIC PROHIBITED	
ADVANCED SIDEWALK CLOSURE SIGN		RB-23 DO NOT ENTER	

NOTES:

1. ALL TRAFFIC SIGNAGE AND TEMPORARY TRAFFIC CONTROL TO CONFORM WITH THE LATEST REVISION OF THE CITY OF WINNIPEG MANUAL OF TEMPORARY TRAFFIC CONTROL ON CITY STREETS.
2. CONTRACTOR SHALL MAINTAIN SAFE PEDESTRIAN ACCESS AND CROSSINGS. WHERE SIDEWALKS ARE LOCATED ON BOTH SIDES OF THE STREET, CONTRACTOR MUST MAINTAIN PEDESTRIAN ACCESS ON ONE SIDE AT ALL TIMES. CONTRACTOR MUST SUBMIT A SITE ACCESSIBILITY PLAN.
3. CONSTRUCTION TO BE COMPLETED LANE AT A TIME WITH TRAFFIC TO BE MAINTAINED IN ONE DIRECTION.
4. ACCESS TO PUBLIC LANES TO BE MAINTAINED AT ALL TIMES DURING CONSTRUCTION EXCEPT DURING ASPHALT OPERATIONS.
5. PARKING TO BE REMOVED AT TIME OF CONSTRUCTION.
6. ALL TRAFFIC SIGNAGE ON THIS DRAWING IS IN REPRESENTATIVE LOCATION. FOR PROPER SPACING REFER TO THE MANUAL OF TEMPORARY TRAFFIC CONTROL.

ENGINEERING DIVISION
TECHNOLOGY SERVICES BRANCH
106 - 1155 PACIFIC AVE

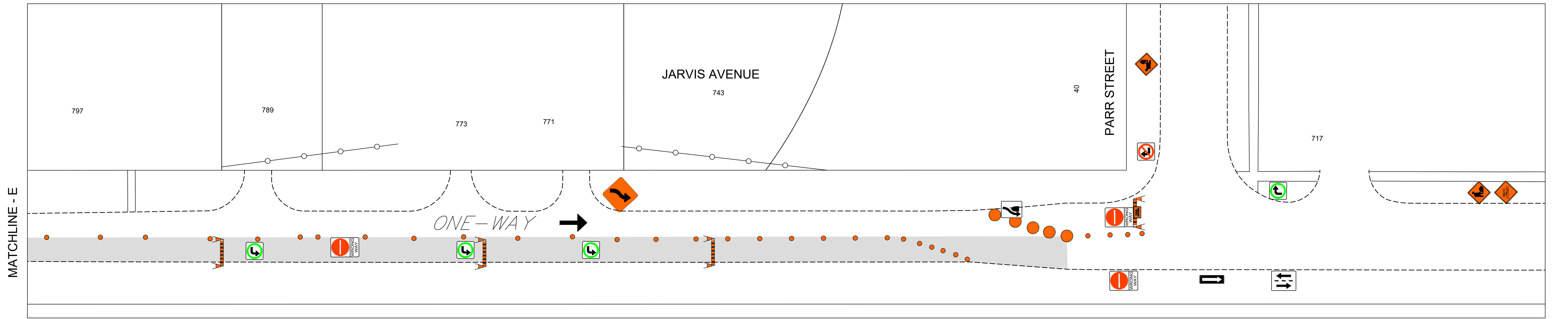
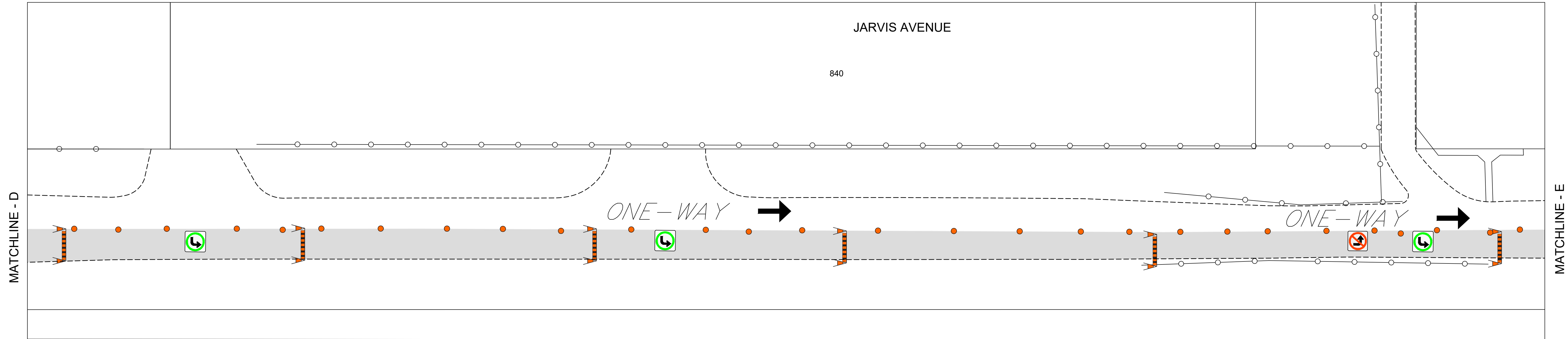
TENDER NO. 12-2026

FOR INFORMATION ONLY

THE CITY OF WINNIPEG
PUBLIC WORKS DEPARTMENT

JARVIS AVENUE STAGE 2
FROM McPHILLIPS ST TO PARR ST
TEMPORARY TRAFFIC SIGNAGE

STAGE 2



TRAFFIC SIGNAGE	
WORK AREA / CLOSED AREA	
DIRECTION OF TRAFFIC LANE	
TC-2 ROADWORK	
TC-63 CHANNELIZATION BARREL	
TALL CONE (POLY POST)	
ROAD CLOSED SIGN	
SIDEWALK CLOSED SIGN	
ADVANCED SIDEWALK CLOSURE SIGN	
RB-21 (L/R) ONE-WAY TRAFFIC	
TC-15 (L/R) ROAD REALIGNMENT	
RB-25 (L/R) KEEP LEFT/KEEP RIGHT	
RB-14 (L/R) LEFT TURN/RIGHT TURN	
RB-15 THROUGH TRAFFIC ONLY	
RB-11 (L/R) TURN PROHIBITED	
RB-10 THROUGH TRAFFIC PROHIBITED	
RB-23 DO NOT ENTER	

NOTES:

1. ALL TRAFFIC SIGNAGE AND TEMPORARY TRAFFIC CONTROL TO CONFORM WITH THE LATEST REVISION OF THE CITY OF WINNIPEG MANUAL OF TEMPORARY TRAFFIC CONTROL ON CITY STREETS.
2. CONTRACTOR SHALL MAINTAIN SAFE PEDESTRIAN ACCESS AND CROSSINGS. WHERE SIDEWALKS ARE LOCATED ON BOTH SIDES OF THE STREET, CONTRACTOR MUST MAINTAIN PEDESTRIAN ACCESS ON ONE SIDE AT ALL TIMES. CONTRACTOR MUST SUBMIT A SITE ACCESSIBILITY PLAN.
3. CONSTRUCTION TO BE COMPLETED LANE AT A TIME WITH TRAFFIC TO BE MAINTAINED IN ONE DIRECTION.
4. ACCESS TO PUBLIC LANES TO BE MAINTAINED AT ALL TIMES DURING CONSTRUCTION EXCEPT DURING ASPHALT OPERATIONS.
5. PARKING TO BE REMOVED AT TIME OF CONSTRUCTION.
6. ALL TRAFFIC SIGNAGE ON THIS DRAWING IS IN REPRESENTATIVE LOCATION. FOR PROPER SPACING REFER TO THE MANUAL OF TEMPORARY TRAFFIC CONTROL.

ENGINEERING DIVISION
TECHNOLOGY SERVICES BRANCH
106 - 1155 PACIFIC AVE

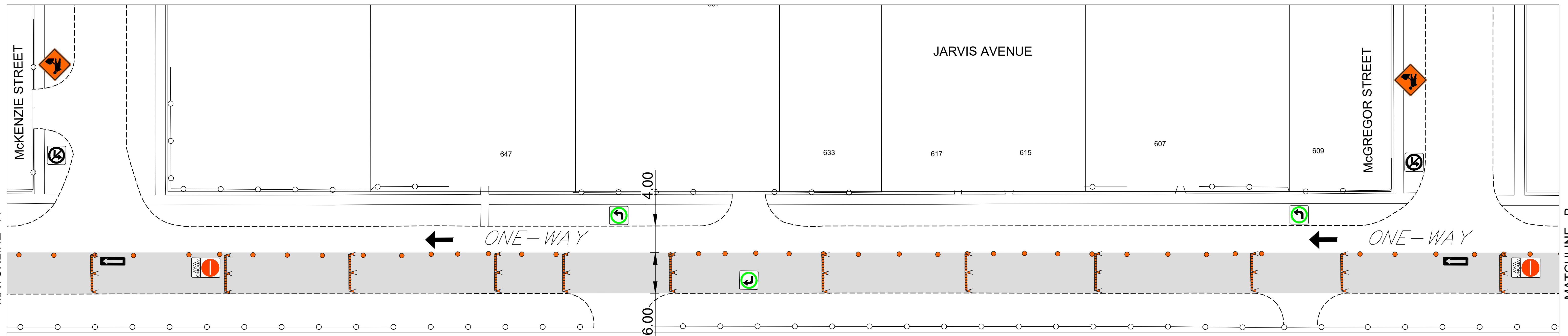
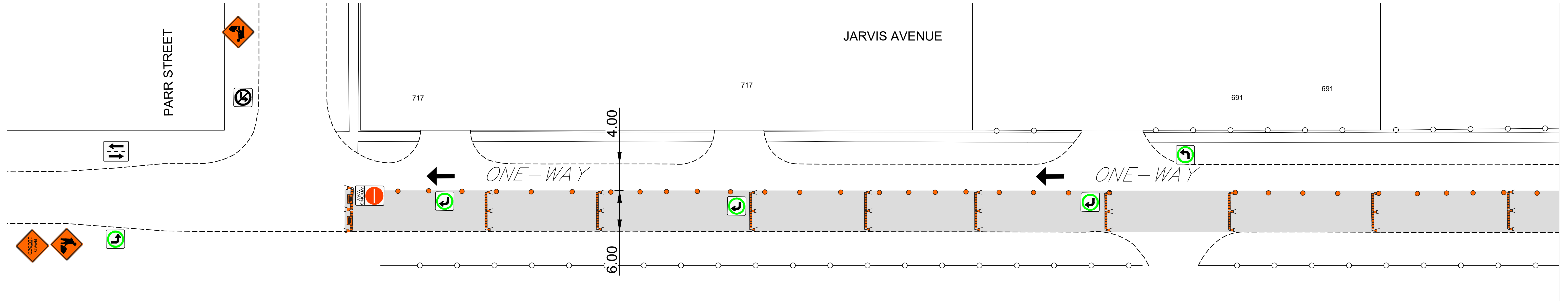
TENDER NO. 12-2026

FOR INFORMATION ONLY

THE CITY OF WINNIPEG
PUBLIC WORKS DEPARTMENT

JARVIS AVENUE STAGE 2
FROM McPHILLIPS ST TO PARR ST
TEMPORARY TRAFFIC SIGNAGE

STAGE 3



TRAFFIC SIGNAGE

WORK AREA / CLOSED AREA		RB-21 (L/R) ONE-WAY TRAFFIC	
DIRECTION OF TRAFFIC LANE		TC-15 (L/R) ROAD REALIGNMENT	
TC-2 ROADWORK		RB-25 (L/R) KEEP LEFT/KEEP RIGHT	
TC-63 CHANNELIZATION BARREL		RB-14 (L/R) LEFT TURN/RIGHT TURN	
TALL CONE (POLY POST)		RB-15 THROUGH TRAFFIC ONLY	
ROAD CLOSED SIGN		RB-11 (L/R) TURN PROHIBITED	
SIDEWALK CLOSED SIGN		RB-10 THROUGH TRAFFIC PROHIBITED	
ADVANCED SIDEWALK CLOSURE SIGN		RB-23 DO NOT ENTER	

NOTES:

1. ALL TRAFFIC SIGNAGE AND TEMPORARY TRAFFIC CONTROL TO CONFORM WITH THE LATEST REVISION OF THE CITY OF WINNIPEG MANUAL OF TEMPORARY TRAFFIC CONTROL ON CITY STREETS.
2. CONTRACTOR SHALL MAINTAIN SAFE PEDESTRIAN ACCESS AND CROSSINGS. WHERE SIDEWALKS ARE LOCATED ON BOTH SIDES OF THE STREET, CONTRACTOR MUST MAINTAIN PEDESTRIAN ACCESS ON ONE SIDE AT ALL TIMES. CONTRACTOR MUST SUBMIT A SITE ACCESSIBILITY PLAN.
3. CONSTRUCTION TO BE COMPLETED LANE AT A TIME WITH TRAFFIC TO BE MAINTAINED IN ONE DIRECTION.
4. ACCESS TO PUBLIC LANES TO BE MAINTAINED AT ALL TIMES DURING CONSTRUCTION EXCEPT DURING ASPHALT OPERATIONS.
5. PARKING TO BE REMOVED AT TIME OF CONSTRUCTION.
6. ALL TRAFFIC SIGNAGE ON THIS DRAWING IS IN REPRESENTATIVE LOCATION. FOR PROPER SPACING REFER TO THE MANUAL OF TEMPORARY TRAFFIC CONTROL.

ENGINEERING DIVISION
TECHNOLOGY SERVICES BRANCH
106 - 1155 PACIFIC AVE

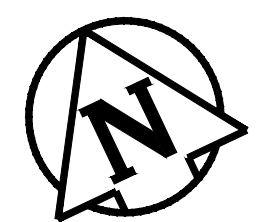
FOR INFORMATION ONLY

TENDER NO. 12-2026

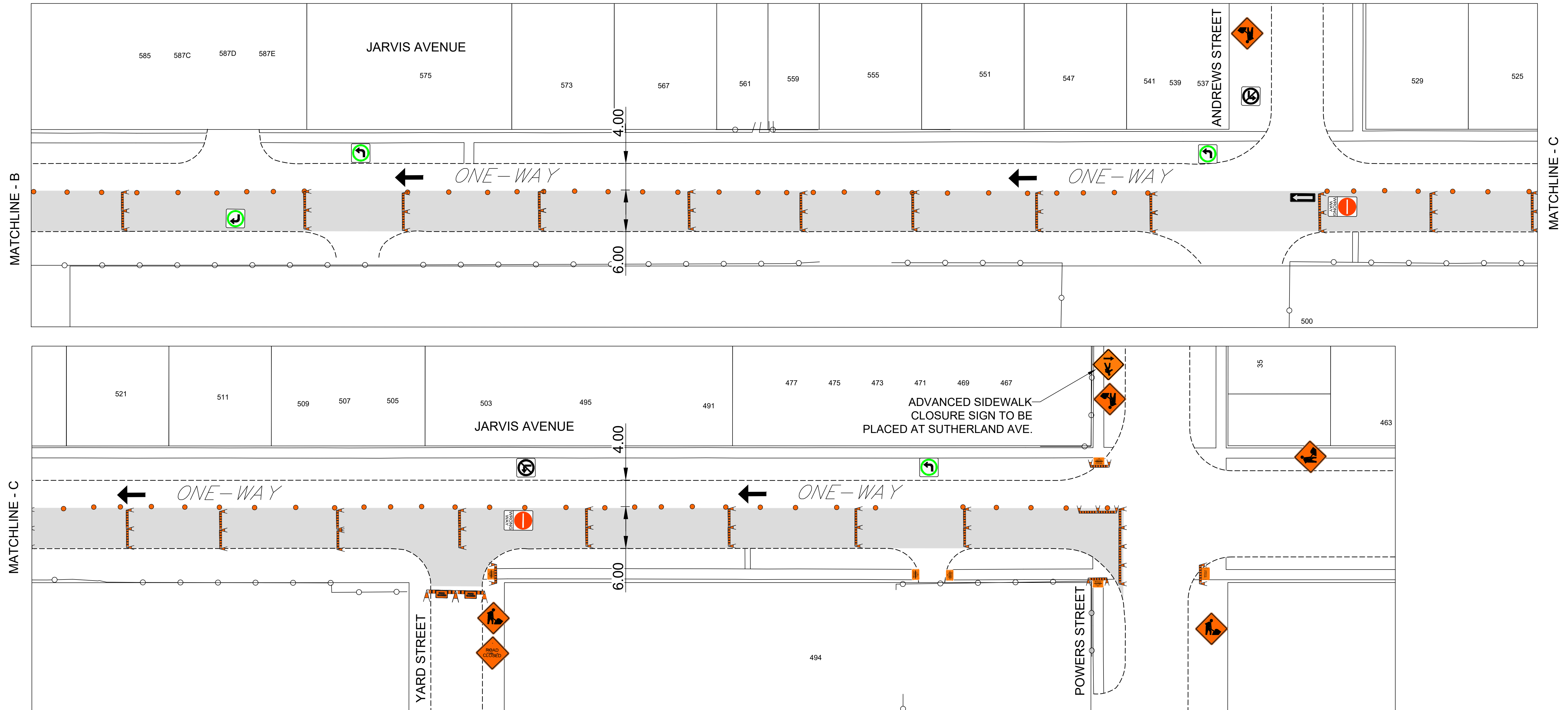


THE CITY OF WINNIPEG
PUBLIC WORKS DEPARTMENT

JARVIS AVENUE STAGE 3
FROM POWERS ST TO PARR ST
TEMPORARY TRAFFIC SIGNAGE



STAGE 3



TRAFFIC SIGNAGE	
WORK AREA / CLOSED AREA	
DIRECTION OF TRAFFIC LANE	
TC-2 ROADWORK	
TC-63 CHANNELIZATION BARREL	
TALL CONE (POLY POST)	
ROAD CLOSED SIGN	
SIDEWALK CLOSED SIGN	
ADVANCED SIDEWALK CLOSURE SIGN	
RB-21 (L/R) ONE-WAY TRAFFIC	
TC-15 (L/R) ROAD REALIGNMENT	
RB-25 (L/R) KEEP LEFT/KEEP RIGHT	
RB-14 (L/R) LEFT TURN/RIGHT TURN	
RB-15 THROUGH TRAFFIC ONLY	
RB-11 (L/R) TURN PROHIBITED	
RB-10 THROUGH TRAFFIC PROHIBITED	
RB-23 DO NOT ENTER	

NOTES:

1. ALL TRAFFIC SIGNAGE AND TEMPORARY TRAFFIC CONTROL TO CONFORM WITH THE LATEST REVISION OF THE CITY OF WINNIPEG MANUAL OF TEMPORARY TRAFFIC CONTROL ON CITY STREETS.
2. CONTRACTOR SHALL MAINTAIN SAFE PEDESTRIAN ACCESS AND CROSSINGS. WHERE SIDEWALKS ARE LOCATED ON BOTH SIDES OF THE STREET, CONTRACTOR MUST MAINTAIN PEDESTRIAN ACCESS ON ONE SIDE AT ALL TIMES. CONTRACTOR MUST SUBMIT A SITE ACCESSIBILITY PLAN.
3. CONSTRUCTION TO BE COMPLETED LANE AT A TIME WITH TRAFFIC TO BE MAINTAINED IN ONE DIRECTION.
4. ACCESS TO PUBLIC LANES TO BE MAINTAINED AT ALL TIMES DURING CONSTRUCTION EXCEPT DURING ASPHALT OPERATIONS.
5. PARKING TO BE REMOVED AT TIME OF CONSTRUCTION.
6. ALL TRAFFIC SIGNAGE ON THIS DRAWING IS IN REPRESENTATIVE LOCATION. FOR PROPER SPACING REFER TO THE MANUAL OF TEMPORARY TRAFFIC CONTROL.



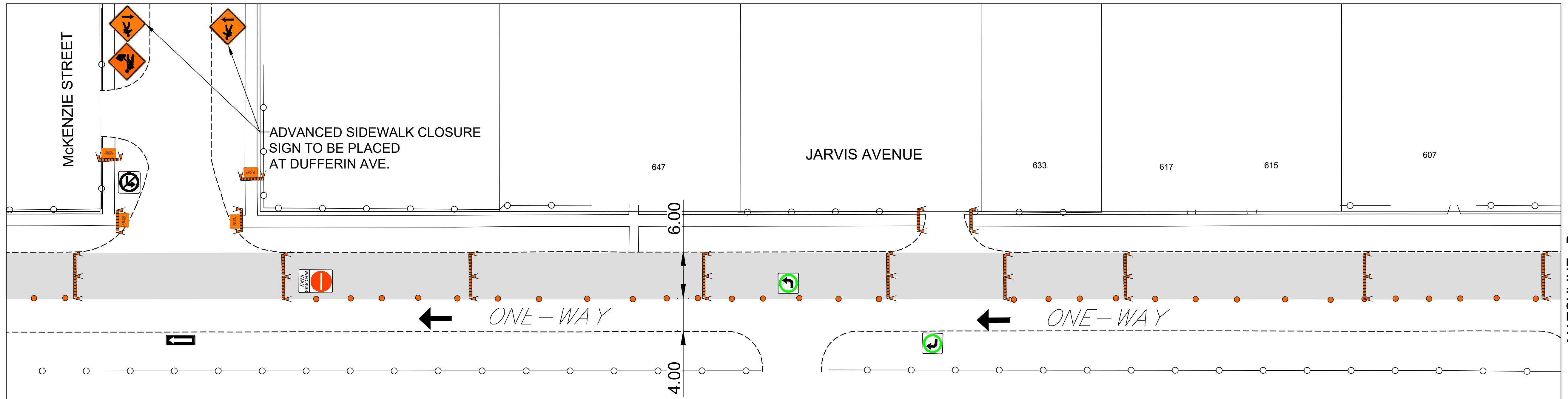
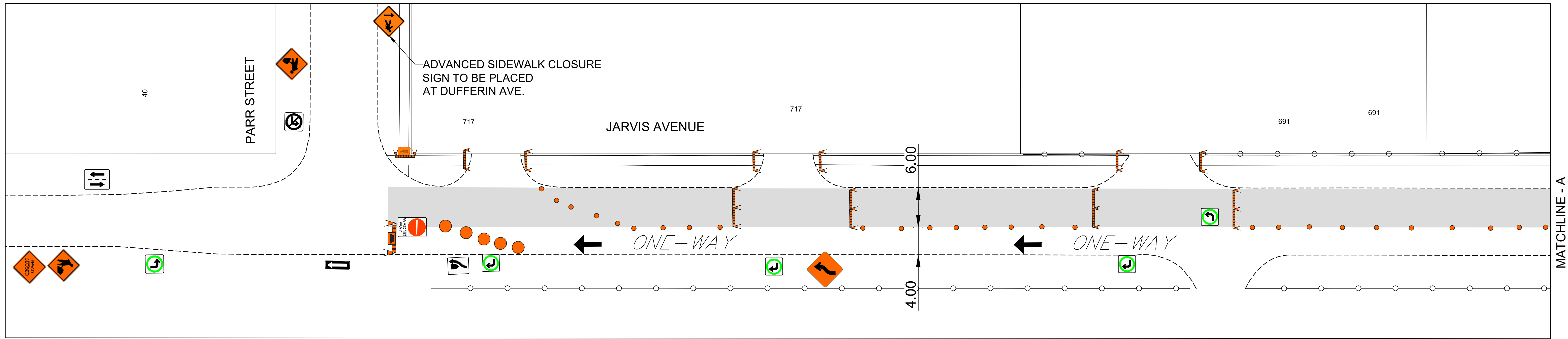
FOR INFORMATION ONLY TENDER NO. 12-2026

THE CITY OF WINNIPEG
PUBLIC WORKS DEPARTMENT

JARVIS AVENUE STAGE 3
FROM POWERS ST TO PARR ST
TEMPORARY TRAFFIC SIGNAGE

ENGINEERING DIVISION
TECHNOLOGY SERVICES BRANCH
106 - 1155 PACIFIC AVE

STAGE 4



TRAFFIC SIGNAGE

WORK AREA / CLOSED AREA		RB-21 (L/R) ONE-WAY TRAFFIC	
DIRECTION OF TRAFFIC LANE		TC-15 (L/R) ROAD REALIGNMENT	
TC-2 ROADWORK		RB-25 (L/R) KEEP LEFT/KEEP RIGHT	
TC-63 CHANNELIZATION BARREL		RB-14 (L/R) LEFT TURN/RIGHT TURN	
TALL CONE (POLY POST)		RB-15 THROUGH TRAFFIC ONLY	
ROAD CLOSED SIGN		RB-11 (L/R) TURN PROHIBITED	
SIDEWALK CLOSED SIGN		RB-10 THROUGH TRAFFIC PROHIBITED	
ADVANCED SIDEWALK CLOSURE SIGN		RB-23 DO NOT ENTER	

NOTES:

1. ALL TRAFFIC SIGNAGE AND TEMPORARY TRAFFIC CONTROL TO CONFORM WITH THE LATEST REVISION OF THE CITY OF WINNIPEG MANUAL OF TEMPORARY TRAFFIC CONTROL ON CITY STREETS.
2. CONTRACTOR SHALL MAINTAIN SAFE PEDESTRIAN ACCESS AND CROSSINGS. WHERE SIDEWALKS ARE LOCATED ON BOTH SIDES OF THE STREET, CONTRACTOR MUST MAINTAIN PEDESTRIAN ACCESS ON ONE SIDE AT ALL TIMES. CONTRACTOR MUST SUBMIT A SITE ACCESSIBILITY PLAN.
3. CONSTRUCTION TO BE COMPLETED LANE AT A TIME WITH TRAFFIC TO BE MAINTAINED IN ONE DIRECTION.
4. ACCESS TO PUBLIC LANES TO BE MAINTAINED AT ALL TIMES DURING CONSTRUCTION EXCEPT DURING ASPHALT OPERATIONS.
5. PARKING TO BE REMOVED AT TIME OF CONSTRUCTION.
6. ALL TRAFFIC SIGNAGE ON THIS DRAWING IS IN REPRESENTATIVE LOCATION. FOR PROPER SPACING REFER TO THE MANUAL OF TEMPORARY TRAFFIC CONTROL.

ENGINEERING DIVISION
TECHNOLOGY SERVICES BRANCH
106 - 1155 PACIFIC AVE

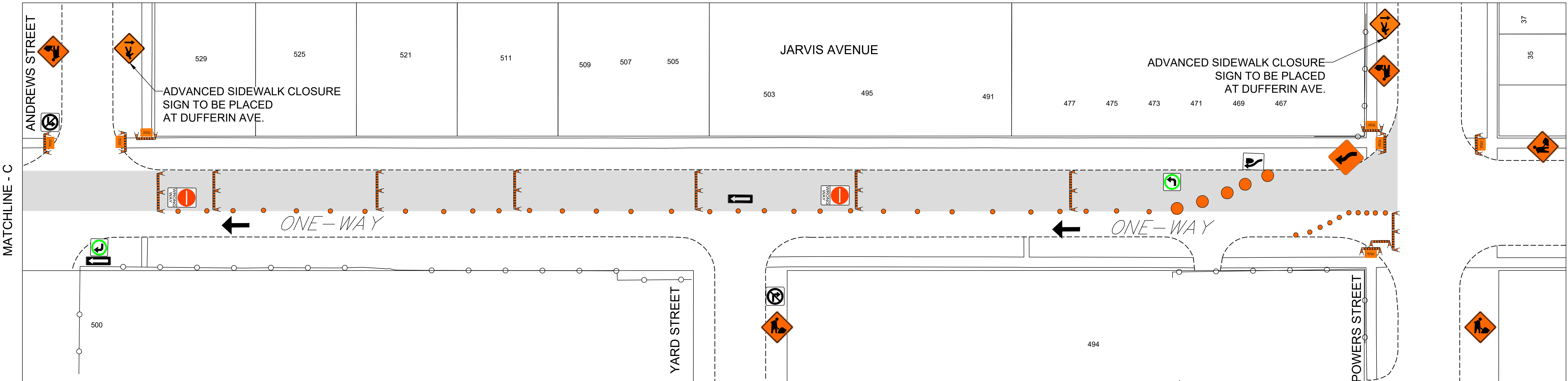
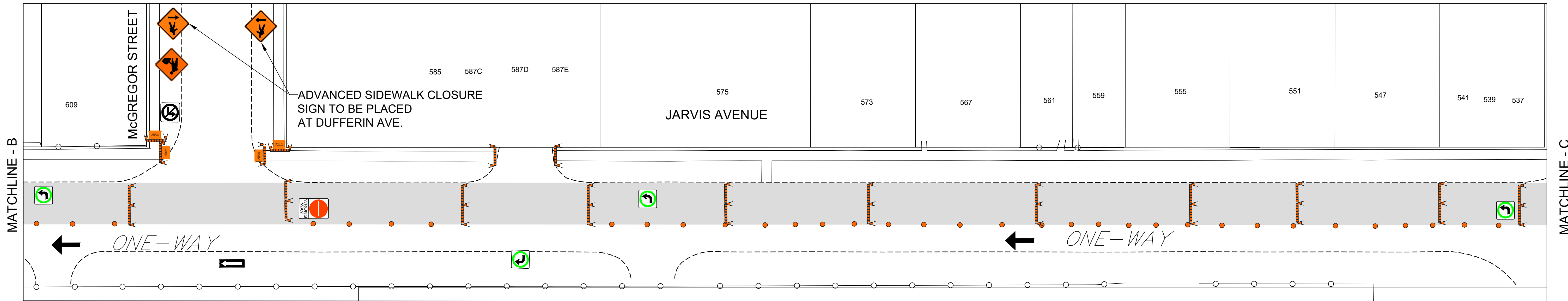
TENDER NO. 12-2026

FOR INFORMATION ONLY

THE CITY OF WINNIPEG
PUBLIC WORKS DEPARTMENT

JARVIS AVENUE STAGE 4
FROM POWERS ST TO PARR ST
TEMPORARY TRAFFIC SIGNAGE

STAGE 4



TRAFFIC SIGNAGE

WORK AREA / CLOSED AREA		RB-21 (L/R) ONE-WAY TRAFFIC	
DIRECTION OF TRAFFIC LANE		TC-15 (L/R) ROAD REALIGNMENT	
TC-2 ROADWORK		RB-25 (L/R) KEEP LEFT/KEEP RIGHT	
TC-63 CHANNELIZATION BARREL		RB-14 (L/R) LEFT TURN/RIGHT TURN	
TALL CONE (POLY POST)		RB-15 THROUGH TRAFFIC ONLY	
ROAD CLOSED SIGN		RB-11 (L/R) TURN PROHIBITED	
SIDEWALK CLOSED SIGN		RB-10 THROUGH TRAFFIC PROHIBITED	
ADVANCED SIDEWALK CLOSURE SIGN		RB-23 DO NOT ENTER	

NOTES:

1. ALL TRAFFIC SIGNAGE AND TEMPORARY TRAFFIC CONTROL TO CONFORM WITH THE LATEST REVISION OF THE CITY OF WINNIPEG MANUAL OF TEMPORARY TRAFFIC CONTROL ON CITY STREETS.
2. CONTRACTOR SHALL MAINTAIN SAFE PEDESTRIAN ACCESS AND CROSSINGS. WHERE SIDEWALKS ARE LOCATED ON BOTH SIDES OF THE STREET, CONTRACTOR MUST MAINTAIN PEDESTRIAN ACCESS ON ONE SIDE AT ALL TIMES. CONTRACTOR MUST SUBMIT A SITE ACCESSIBILITY PLAN.
3. CONSTRUCTION TO BE COMPLETED LANE AT A TIME WITH TRAFFIC TO BE MAINTAINED IN ONE DIRECTION.
4. ACCESS TO PUBLIC LANES TO BE MAINTAINED AT ALL TIMES DURING CONSTRUCTION EXCEPT DURING ASPHALT OPERATIONS.
5. PARKING TO BE REMOVED AT TIME OF CONSTRUCTION.
6. ALL TRAFFIC SIGNAGE ON THIS DRAWING IS IN REPRESENTATIVE LOCATION. FOR PROPER SPACING REFER TO THE MANUAL OF TEMPORARY TRAFFIC CONTROL.

ENGINEERING DIVISION
TECHNOLOGY SERVICES BRANCH
106 - 1155 PACIFIC AVE

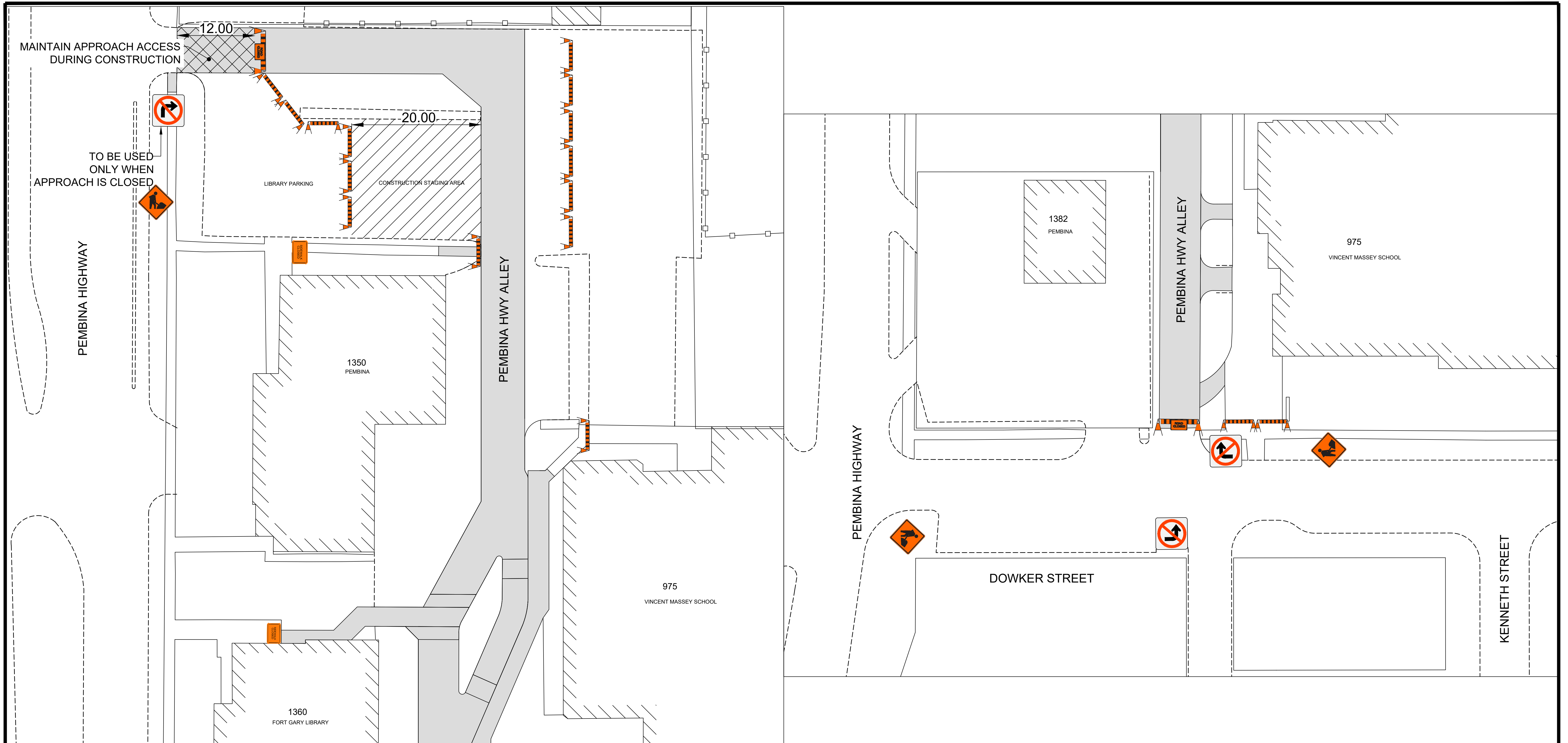
FOR INFORMATION ONLY

TENDER NO. 12-2026



THE CITY OF WINNIPEG
PUBLIC WORKS DEPARTMENT

JARVIS AVENUE STAGE 4
FROM POWERS ST TO PARR ST
TEMPORARY TRAFFIC SIGNAGE



TRAFFIC SIGNAGE

WORK AREA / CLOSED AREA		RB-21 (L/R) ONE-WAY TRAFFIC	
DIRECTION OF TRAFFIC LANE		TC-15 (L/R) ROAD REALIGNMENT	
TC-2 ROADWORK		RB-25 (L/R) KEEP LEFT/KEEP RIGHT	
TC-63 CHANNELIZATION BARREL		RB-14 (L/R) LEFT TURN/RIGHT TURN	
TALL CONE (POLY POST)		RB-15 THROUGH TRAFFIC ONLY	
ROAD CLOSED SIGN		RB-11 (L/R) TURN PROHIBITED	
SIDEWALK CLOSED SIGN		RB-10 THROUGH TRAFFIC PROHIBITED	
ADVANCED SIDEWALK CLOSURE SIGN		RB-23 DO NOT ENTER	

NOTES:

1. ALL TRAFFIC SIGNAGE AND TEMPORARY TRAFFIC CONTROL TO CONFORM WITH THE LATEST REVISION OF THE CITY OF WINNIPEG MANUAL OF TEMPORARY TRAFFIC CONTROL ON CITY STREETS.
2. CONTRACTOR SHALL MAINTAIN SAFE PEDESTRIAN ACCESS AND CROSSINGS. WHERE SIDEWALKS ARE LOCATED ON BOTH SIDES OF THE STREET, CONTRACTOR MUST MAINTAIN PEDESTRIAN ACCESS ON ONE SIDE AT ALL TIMES. CONTRACTOR MUST SUBMIT A SITE ACCESSIBILITY PLAN.
3. PARKING TO BE REMOVED AT TIME OF CONSTRUCTION.
4. ALL TRAFFIC SIGNAGE ON THIS DRAWING IS IN REPRESENTATIVE LOCATION. FOR PROPER SPACING REFER TO THE MANUAL OF TEMPORARY TRAFFIC CONTROL.

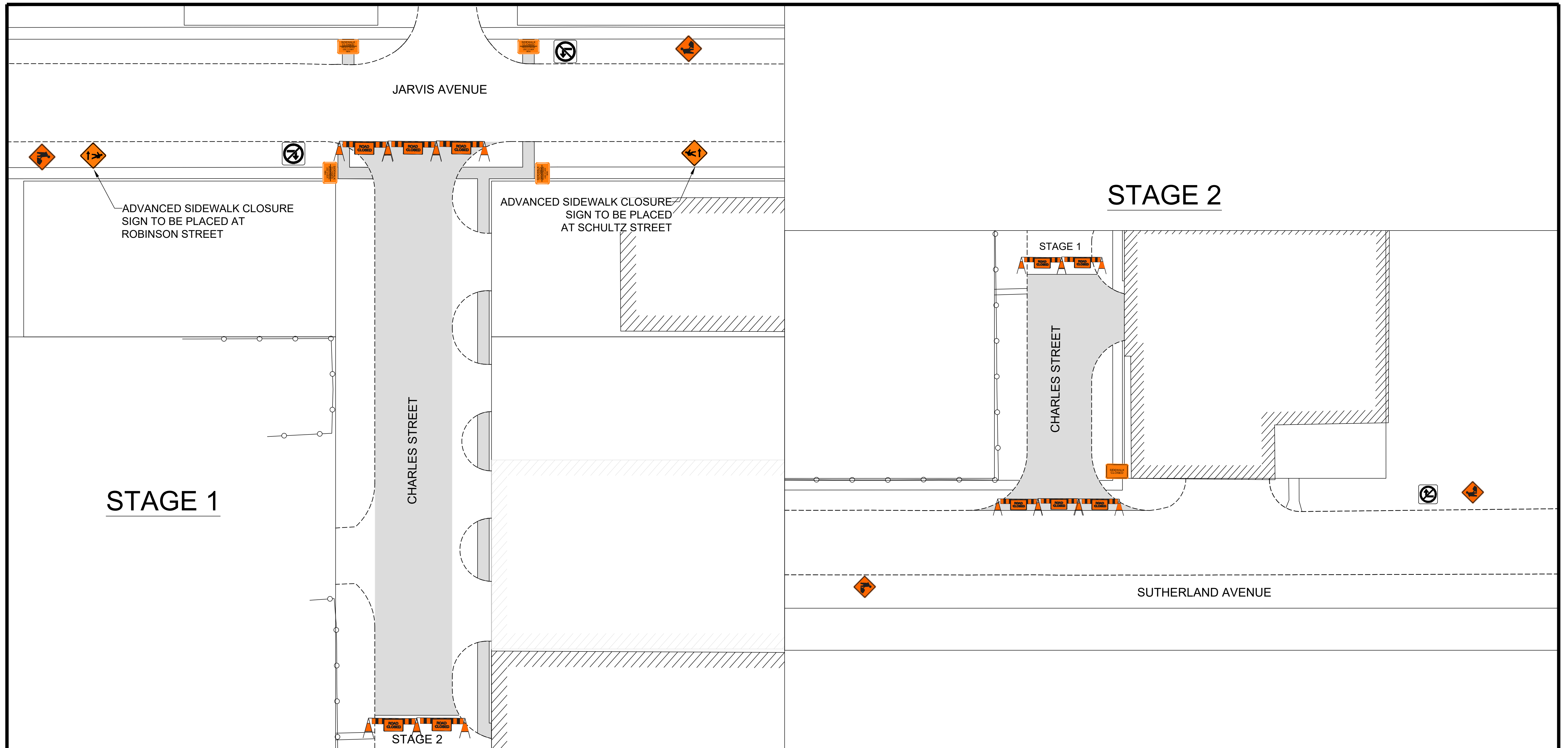
TENDER NO. 12-2026

FOR INFORMATION ONLY

THE CITY OF WINNIPEG
PUBLIC WORKS DEPARTMENT

PEMBINA HIGHWAY ALLEY
FROM PEMBINA HWY TO DOWKER ST
TEMPORARY TRAFFIC SIGNAGE

ENGINEERING DIVISION
TECHNOLOGY SERVICES BRANCH
106 - 1155 PACIFIC AVE



TRAFFIC SIGNAGE

WORK AREA / CLOSED AREA		RB-21 (L/R) ONE-WAY TRAFFIC	
DIRECTION OF TRAFFIC LANE		TC-15 (L/R) ROAD REALIGNMENT	
TC-2 ROADWORK		RB-25 (L/R) KEEP LEFT/KEEP RIGHT	
TC-63 CHANNELIZATION BARREL		RB-14 (L/R) LEFT TURN/RIGHT TURN	
TALL CONE (POLY POST)		RB-15 THROUGH TRAFFIC ONLY	
ROAD CLOSED SIGN		RB-11 (L/R) TURN PROHIBITED	
SIDEWALK CLOSED SIGN		RB-10 THROUGH TRAFFIC PROHIBITED	
ADVANCED SIDEWALK CLOSURE SIGN		RB-23 DO NOT ENTER	

NOTES:

1. ALL TRAFFIC SIGNAGE AND TEMPORARY TRAFFIC CONTROL TO CONFORM WITH THE LATEST REVISION OF THE CITY OF WINNIPEG MANUAL OF TEMPORARY TRAFFIC CONTROL ON CITY STREETS.
2. CONTRACTOR SHALL MAINTAIN SAFE PEDESTRIAN ACCESS AND CROSSINGS. WHERE SIDEWALKS ARE LOCATED ON BOTH SIDES OF THE STREET, CONTRACTOR MUST MAINTAIN PEDESTRIAN ACCESS ON ONE SIDE AT ALL TIMES. CONTRACTOR MUST SUBMIT A SITE ACCESSIBILITY PLAN.
3. PARKING TO BE REMOVED AT TIME OF CONSTRUCTION.
4. ALL TRAFFIC SIGNAGE ON THIS DRAWING IS IN REPRESENTATIVE LOCATION. FOR PROPER SPACING REFER TO THE MANUAL OF TEMPORARY TRAFFIC CONTROL.

ENGINEERING DIVISION
TECHNOLOGY SERVICES BRANCH
106 - 1155 PACIFIC AVE

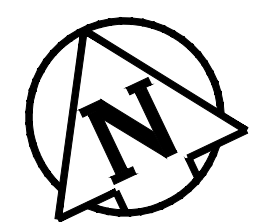
FOR INFORMATION ONLY

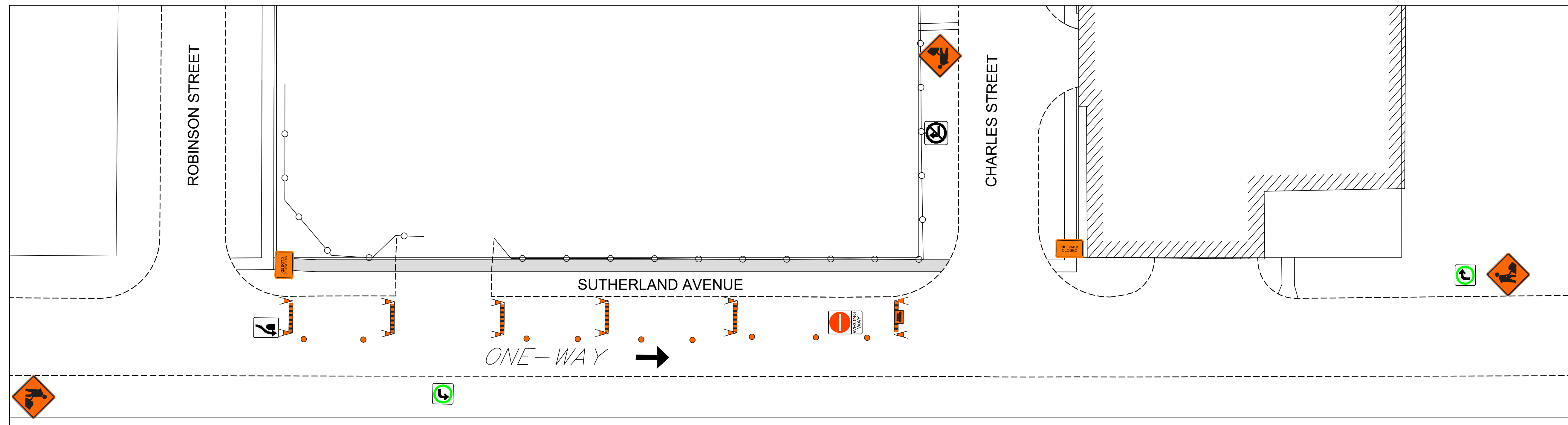
TENDER NO. 12-2026



THE CITY OF WINNIPEG
PUBLIC WORKS DEPARTMENT

CHARLES STREET
FROM SUTHERLAND AVE TO JARVIS AVE
TEMPORARY TRAFFIC SIGNAGE





TRAFFIC SIGNAGE

WORK AREA / CLOSED AREA		RB-21 (L/R) ONE-WAY TRAFFIC	
DIRECTION OF TRAFFIC LANE		TC-15 (L/R) ROAD REALIGNMENT	
TC-2 ROADWORK		RB-25 (L/R) KEEP LEFT/KEEP RIGHT	
TC-63 CHANNELIZATION BARREL		RB-14 (L/R) LEFT TURN/RIGHT TURN	
TALL CONE (POLY POST)		RB-15 THROUGH TRAFFIC ONLY	
ROAD CLOSED SIGN		RB-11 (L/R) TURN PROHIBITED	
SIDEWALK CLOSED SIGN		RB-10 THROUGH TRAFFIC PROHIBITED	
ADVANCED SIDEWALK CLOSURE SIGN		RB-23 DO NOT ENTER	

NOTES:

1. ALL TRAFFIC SIGNAGE AND TEMPORARY TRAFFIC CONTROL TO CONFORM WITH THE LATEST REVISION OF THE CITY OF WINNIPEG MANUAL OF TEMPORARY TRAFFIC CONTROL ON CITY STREETS.
2. CONTRACTOR SHALL MAINTAIN SAFE PEDESTRIAN ACCESS AND CROSSINGS. WHERE SIDEWALKS ARE LOCATED ON BOTH SIDES OF THE STREET, CONTRACTOR MUST MAINTAIN PEDESTRIAN ACCESS ON ONE SIDE AT ALL TIMES. CONTRACTOR MUST SUBMIT A SITE ACCESSIBILITY PLAN.
3. PARKING TO BE REMOVED AT TIME OF CONSTRUCTION.
4. ALL TRAFFIC SIGNAGE ON THIS DRAWING IS IN REPRESENTATIVE LOCATION. FOR PROPER SPACING REFER TO THE MANUAL OF TEMPORARY TRAFFIC CONTROL.

ENGINEERING DIVISION
TECHNOLOGY SERVICES BRANCH
106 - 1155 PACIFIC AVE

FOR INFORMATION ONLY

TENDER NO. 12-2026



THE CITY OF WINNIPEG
PUBLIC WORKS DEPARTMENT

SUTHERLAND AVENUE
FROM ROBINSON ST TO CHARLES ST
TEMPORARY TRAFFIC SIGNAGE

