

- CONSTRUCTION NOTES**
1. REMOVE EXISTING PAVEMENT AND CONSTRUCT NEW 230mm PLAN DOWELLED PAVEMENT BY MECHANICAL MEANS AS PER CROSS SECTION DETAILS ON DRAWING SE-26-304 (E27)
 2. LIMIT OF RECONSTRUCTION
 3. REMOVE ASPHALT AND CONSTRUCT NEW MS1 ASPHALT OVERLAY (E18)
 4. REMOVE EXISTING PAVEMENT AND INSTALL SUITABLE FILL, TOP SOIL AND SOD
 5. RENEW EXISTING CONCRETE SIDEWALK (SD-228A, E20)
 6. CONSTRUCT NEW BARRIER CURB (SD-206A, SD-205)
 7. REMOVE EXISTING CURB AND CONSTRUCT NEW BARRIER CURB (SD-206A, SD-205)
 8. INSTALL NEW DETECTABLE WARNING SURFACE TILE (SD-229E)
 9. INSTALL NEW 1800 CATCH BASIN WITH ARCHED CURB AND GUTTER INLET FRAME (SD-024, E21), AND CONNECT TO EXISTING CB LEAD WITH 250mm Ø PVC PIPE AS PER CW 2130
 10. INSTALL 6.0m - 150mm Ø SUB DRAINS (BOTH SIDES), CONNECT TO CATCH BASIN (SD-245) AND CAP ENDS AS PER CW 3120
 11. REMOVE EXISTING CATCH BASIN AS PER CW2130
 12. REMOVE EXISTING SIDEWALK
 13. INSTALL NEW 40mm LIP CURB (SD-202B)

- GENERAL NOTES**
- A. PAVEMENT DIMENSIONS ARE TO BACK OF CURB
 - B. ALL CURB RADII UNDER 15.0m SHALL BE MODIFIED (SD-203C)
 - C. CURB REPLACEMENT AS DIRECTED BY CONTRACT ADMINISTRATOR
 - D. CONTRACTOR TO CONFIRM THE LOCATION OF ALL UTILITIES/SERVICES IN THE FIELD PRIOR TO CONSTRUCTION
 - E. ADJUST ALL EXISTING WATER VALVES AND CURB STOPS TO GRADE
 - F. PAVEMENT REPAIRS SHOWN ARE A REPRESENTATIVE SAMPLE OF THE TENDER QUANTITIES
 - G. ALL WATER SERVICES WITHIN THE LIMITS OF THE RECONSTRUCTION SHALL BE INSULATED AS PER SD-018
 - H. ALL SIDEWALK RENEWALS TO INCLUDE SIDEWALK EXPANSION JOINTS AS PER E20

ISSUED FOR TENDER
NOT TO BE USED FOR CONSTRUCTION

METRIC
WHOLE NUMBERS INDICATE MILLIMETERS
DECIMALIZED NUMBERS INDICATE METERS

⊕	HYDRANT	◆	---	LDS/WWS	---	▬	RAMP CURB	---
⊗	VALVE	●	---	WATERMAIN	---	▬	CONCRETE	---
⊙	CURB STOP	●	---	GAS	---	▬	CONCRETE SIDEWALK	---
○	MANHOLE	●	---	TRAFFIC SIGNALS	---	▬	ASPHALT	---
□	CATCH BASIN	●	---	HYDRO/STREET LIGHT	---	▬	SUB DRAINS	---
△	CATCH PIT/CURB INLET	▲	---	MTS/SHAW	---	▬	EXISTING	---
○	HYDRO POLE	●	---	BOC/EDGE OF PAVEMENT	---	▬	LEGEND - PLAN	---
○	LIGHT STANDARD	●	---	PROPERTY LINE	---	▬	PROPOSED	---
○	TRAFFIC SIGNAL POLE	●	---	ELEVATIONS (231.000)	---	▬	NORTH / WEST GUTTER	---
⊕	SURVEY BAR	●	---	TREE / TREE TRUNK	---	▬	CENTER LINE	---
⊕	EXISTING	---	---	LEGEND - PLAN	---	▬	SOUTH / EAST GUTTER	---
⊕	PROPOSED	---	---	LEGEND - PROFILE	---	▬	PROPOSED	---

LOCATION APPROVED UNDERGROUND STRUCTURES

18. S. E. CORNER DOWKER AVE AND PEMBINA HWY
ELEV. 232.326

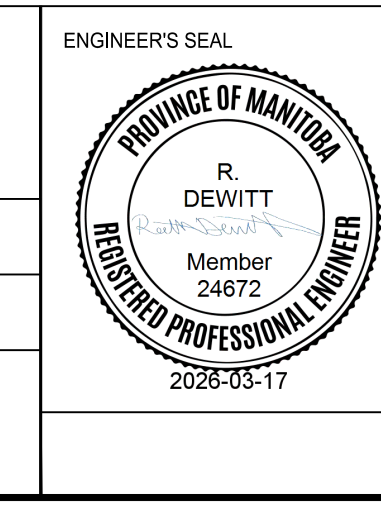
ENGINEERING DIVISION
TECHNOLOGY SERVICES BRANCH
106 - 1155 PACIFIC AVE

DESIGNED BY A.K. CHECKED BY G.K.
DRAWN BY A.K. APPROVED BY R.D.

HOR. SCALE: 1 : 250
VERTICAL: 1 : 10
DATE: 2026/03/17

2.	ISSUE FOR TENDER	26/03/20	A.K.
1.	SUBMIT FOR PLAN APPROVAL	26/03/02	A.K.
NO.	REVISIONS	DATE	BY

NOTE:
LOCATION OF UNDERGROUND STRUCTURES AS SHOWN ARE BASED ON THE BEST INFORMATION AVAILABLE. BUT NO GUARANTEE IS GIVEN THAT ALL EXISTING UTILITIES ARE SHOWN OR THAT THE GIVEN LOCATIONS ARE EXACT. CONFIRMATION OF EXISTENCE AND EXACT LOCATION OF ALL SERVICES MUST BE OBTAINED FROM THE INDIVIDUAL UTILITIES BEFORE PROCEEDING WITH CONSTRUCTION.



THE CITY OF WINNIPEG
PUBLIC WORKS DEPARTMENT

PEMBINA HIGHWAY ALLEY
FROM PEMBINA HIGHWAY TO DOWKER AVENUE
ALLEY RECONSTRUCTION AND ASSOCIATED WORKS
FROM STA. 1+00 TO STA. 2+00

CITY DRAWING NUMBER
SE-26-302
SHEET 3 OF 22
TENDER NO.
12-2026