

- CONSTRUCTION NOTES**
- MILL EXISTING ASPHALT (DEPTH 1mm-50mm)
 - CONSTRUCT NEW (+/- 50mm) MS1 ASPHALT OVERLAY (E18)
 - INSTALL TYPE B PAVEMENT REPAIR FABRIC
 - REMOVE EXISTING SIDEWALK AND INSTALL SUITABLE FILL, TOP SOIL AND SOD
 - REMOVE EXISTING CONCRETE PAVEMENT AND CONSTRUCT NEW 200mm REINFORCED CONCRETE PAVEMENT
 - REMOVE EXISTING SIDEWALK
 - RENEW EXISTING CONCRETE SIDEWALK (SD-228A, E20)
 - CONSTRUCT NEW 150mm REINFORCED CONCRETE TRANSIT STOP (E20)
 - CONSTRUCT NEW 100mm CONCRETE SIDEWALK (SD-228A, E20)
 - INSTALL NEW DETECTABLE WARNING SURFACE TILE (SD-229E)
 - CONSTRUCT NEW CURB RAMP (SD-200A, SD-229C, SD-229D)
 - RENEW EXISTING BARRIER CURB (SD-206A, SD-205)
 - ADJUST FRAME TO GRADE
 - INSTALL NEW ARCHED CURB AND GUTTER INLET FRAME AND COVER (SD-024, E21) AND ADJUST TO GRADE
 - REMOVE EXISTING CURB AND CONSTRUCT NEW MODIFIED BARRIER CURB (SD-203B)
 - RENEW EXISTING CURB RAMP (SD-200A, SD-229C, SD-229D)
 - CONSTRUCT NEW ASPHALT PAVEMENT OVERLAY (80mm TYP., TYPE MS1, E18)
 - REMOVE EXISTING TREE (E14)
- GENERAL NOTES**
- PAVEMENT DIMENSIONS ARE TO BACK OF CURB
 - ALL CURB RADI UNDER 15.0m SHALL BE MODIFIED (SD-203C)
 - CURB REPLACEMENT AS DIRECTED BY CONTRACT ADMINISTRATOR
 - CONTRACTOR TO CONFIRM THE LOCATION OF ALL UTILITIES/SERVICES IN THE FIELD PRIOR TO CONSTRUCTION
 - ADJUST ALL EXISTING WATER VALVES AND CURB STOPS TO GRADE
 - PAVEMENT REPAIRS SHOWN ARE A REPRESENTATIVE SAMPLE OF THE TENDER QUANTITIES
 - ALL SIDEWALK RENEWALS TO INCLUDE SIDEWALK EXPANSION JOINTS AS PER E20

ISSUED FOR TENDER
NOT TO BE USED FOR
CONSTRUCTION

METRIC
WHOLE NUMBERS INDICATE MILLIMETERS
DECIMALIZED NUMBERS INDICATE METERS

| | | | | | | | |
|---|----------------------|---|----------------------|---|--------------------------|---|------------------------|
| ● | BOLLARD | — | CONCRETE | — | CONCRETE SIDEWALK | — | LOCATION APPROVED |
| ⊕ | HYDRANT | — | LDS/NWS | — | ASPHALT | — | UNDERGROUND STRUCTURES |
| ⊕ | VALVE | — | WATERMAIN | — | GRAVEL | — | |
| ○ | CURB STOP | — | GAS | — | PAVEMENT REPAIR FABRIC | — | |
| ○ | MANHOLE | — | TRAFFIC SIGNALS | — | WATER SERVICE INSULATION | — | |
| □ | CATCH BASIN | — | HYDRO/STREET LIGHT | — | WOOD FENCE | — | |
| △ | CATCH PIT/CURB INLET | — | MTS/SHAW | — | CONCRETE FENCE | — | |
| ○ | HYDRO POLE | — | BOC/EDGE OF PAVEMENT | — | LEGEND - PLAN | — | |
| ○ | LIGHT STANDARD | — | PROPERTY LINE | — | NORTH GUTTER | — | |
| ○ | TRAFFIC SIGNAL POLE | — | RAMP CURB | — | CENTER LINE | — | |
| + | SURVEY BAR | — | ELEVATIONS | — | SOUTH GUTTER | — | |
| ⊕ | GEODETIC BENCH MARK | — | TREE/ TREE TRUNK | — | | — | |
| — | EXISTING | — | LEGEND - PLAN | — | EXISTING | — | |
| — | LEGEND - PLAN | — | PROPOSED | — | PROPOSED | — | |

NOTE:
LOCATION OF UNDERGROUND STRUCTURES AS SHOWN ARE BASED ON THE BEST INFORMATION AVAILABLE. BUT NO GUARANTEE IS GIVEN THAT ALL EXISTING UTILITIES ARE SHOWN OR THAT THE GIVEN LOCATIONS ARE EXACT. CONFIRMATION OF EXISTENCE AND EXACT LOCATION OF ALL SERVICES MUST BE OBTAINED FROM THE INDIVIDUAL UTILITIES BEFORE PROCEEDING WITH CONSTRUCTION.

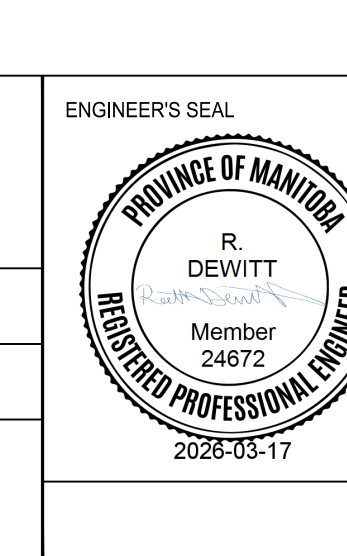
B.M. GBM AT NORTH EAST CORNER OF JARVIS AND MCPHILLIPS
ELEV. 232.000

ENGINEERING DIVISION
TECHNOLOGY SERVICES BRANCH
106 - 1155 PACIFIC AVE

DESIGNED BY: A.K. CHECKED BY: G.K., R.W.
DRAWN BY: A.K., K.P. APPROVED BY: R.D.

HOR. SCALE: 1 : 250
VERTICAL: 1 : 10

DATE: 2026/03/17



THE CITY OF WINNIPEG
PUBLIC WORKS DEPARTMENT

JARVIS AVE
FROM MCPHILLIPS STREET TO PARR STREET
MILL AND FILL AND ASSOCIATED WORKS
FROM PARR STREET TO MCKENZIE STREET
TBO / MINOR REHAB
FROM STA. 10+50 TO STA. 11+70

CITY DRAWING NUMBER: SE-26-313
SHEET 15 OF 22
TENDER NO.: 12-2026