

- CONSTRUCTION NOTES**
- MILL EXISTING ASPHALT (DEPTH 1mm-50mm)
 - CONSTRUCT NEW (+/- 50mm) MS1 ASPHALT OVERLAY (E18)
 - INSTALL TYPE B PAVEMENT REPAIR FABRIC
 - REMOVE EXISTING SIDEWALK AND INSTALL SUITABLE FILL, TOP SOIL AND SOD
 - REMOVE EXISTING CONCRETE PAVEMENT AND CONSTRUCT NEW 200mm REINFORCED CONCRETE PAVEMENT
 - REMOVE EXISTING SIDEWALK
 - RENEW EXISTING CONCRETE SIDEWALK (SD-228A, E20)
 - CONSTRUCT NEW 150mm REINFORCED CONCRETE TRANSIT STOP (E20)
 - CONSTRUCT NEW 100mm CONCRETE SIDEWALK (SD-228A, E20)
 - INSTALL NEW DETECTABLE WARNING SURFACE TILE (SD-229E)
 - CONSTRUCT NEW CURB RAMP (SD-200A, SD-229C, SD-229D)
 - RENEW EXISTING BARRIER CURB (SD-206A, SD-205)
 - ADJUST FRAME TO GRADE
 - INSTALL NEW ARCHED CURB AND GUTTER INLET FRAME AND COVER (SD-024, E21) AND ADJUST TO GRADE
 - REMOVE EXISTING CURB AND CONSTRUCT NEW MODIFIED BARRIER CURB (SD-203B)
 - RENEW EXISTING CURB RAMP (SD-200A, SD-229C, SD-229D)
 - CONSTRUCT NEW ASPHALT PAVEMENT OVERLAY (80mm TYP., TYPE MS1, E18)
 - REMOVE EXISTING TREE (E14)

- GENERAL NOTES**
- PAVEMENT DIMENSIONS ARE TO BACK OF CURB
 - ALL CURB RADI UNDER 15.0m SHALL BE MODIFIED (SD-203C)
 - CURB REPLACEMENT AS DIRECTED BY CONTRACT ADMINISTRATOR
 - CONTRACTOR TO CONFIRM THE LOCATION OF ALL UTILITIES/SERVICES IN THE FIELD PRIOR TO CONSTRUCTION
 - ADJUST ALL EXISTING WATER VALVES AND CURB STOPS TO GRADE
 - PAVEMENT REPAIRS SHOWN ARE A REPRESENTATIVE SAMPLE OF THE TENDER QUANTITIES
 - ALL SIDEWALK RENEWALS TO INCLUDE SIDEWALK EXPANSION JOINTS AS PER E20

ISSUED FOR TENDER
NOT TO BE USED FOR CONSTRUCTION

METRIC
WHOLE NUMBERS INDICATE MILLIMETERS
DECIMALIZED NUMBERS INDICATE METERS

●	BOLLARD	—	CONCRETE	—	CONCRETE SIDEWALK	—	LOCATION APPROVED
◇	HYDRANT	—	LDS/NWS	—	ASPHALT	—	UNDERGROUND STRUCTURES
⊕	VALVE	—	WATERMAIN	—	GRAVEL	—	
○	CURB STOP	—	GAS	—	PAVEMENT REPAIR FABRIC	—	
○	MANHOLE	—	TRAFFIC SIGNALS	—	WATER SERVICE INSULATION	—	
□	CATCH BASIN	—	HYDRO/STREET LIGHT	—	WOOD FENCE	—	
△	CATCH PIT/CURB INLET	—	MTS/SHAW	—	CONCRETE FENCE	—	
○	HYDRO POLE	—	BOC/EDGE OF PAVEMENT	—	LEGEND - PLAN	—	
○	LIGHT STANDARD	—	PROPERTY LINE	—	NORTH GUTTER	—	
○	TRAFFIC SIGNAL POLE	—	RAMP CURB	—	CENTER LINE	—	
+	SURVEY BAR	—	ELEVATIONS	—	SOUTH GUTTER	—	
⊕	GEODETIC BENCH MARK	—	TREE/ TREE TRUNK	—		—	
○	EXISTING	—	LEGEND - PLAN	—		—	
○	PROPOSED	—	LEGEND - PROFILE	—		—	

B.M. GBM AT NORTH EAST CORNER OF JARVIS AND MCPHILLIPS
ELEV. 232.000

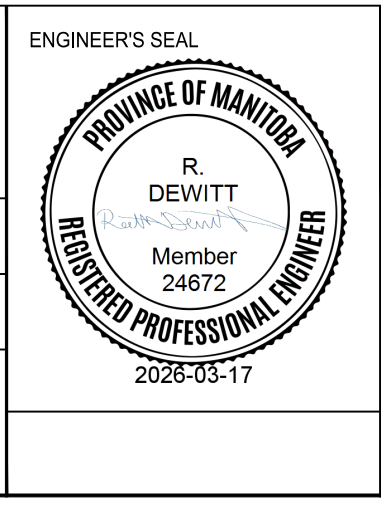
DESIGNED BY	A.K.	CHECKED BY	G.K., R.W.
DRAWN BY	A.K., K.P.	APPROVED BY	R.D.
2.	ISSUE FOR TENDER	26/03/20	A.K.
1.	SUBMIT FOR PLAN APPROVAL	26/03/02	A.K.
NO.	REVISIONS	DATE	BY
		2026/03/17	

ENGINEERING DIVISION
TECHNOLOGY SERVICES BRANCH
106 - 1155 PACIFIC AVE

DESIGNED BY: A.K.
CHECKED BY: G.K., R.W.
DRAWN BY: A.K., K.P.
APPROVED BY: R.D.

HOR. SCALE: 1 : 250
VERTICAL: 1 : 10

DATE: 2026/03/17



THE CITY OF WINNIPEG
PUBLIC WORKS DEPARTMENT

JARVIS AVE
MAJOR / MINOR REHAB
FROM STA. 14+10 TO STA. 15+30

CITY DRAWING NUMBER: SE-26-316
SHEET 18 OF 22
TENDER NO.: 12-2026