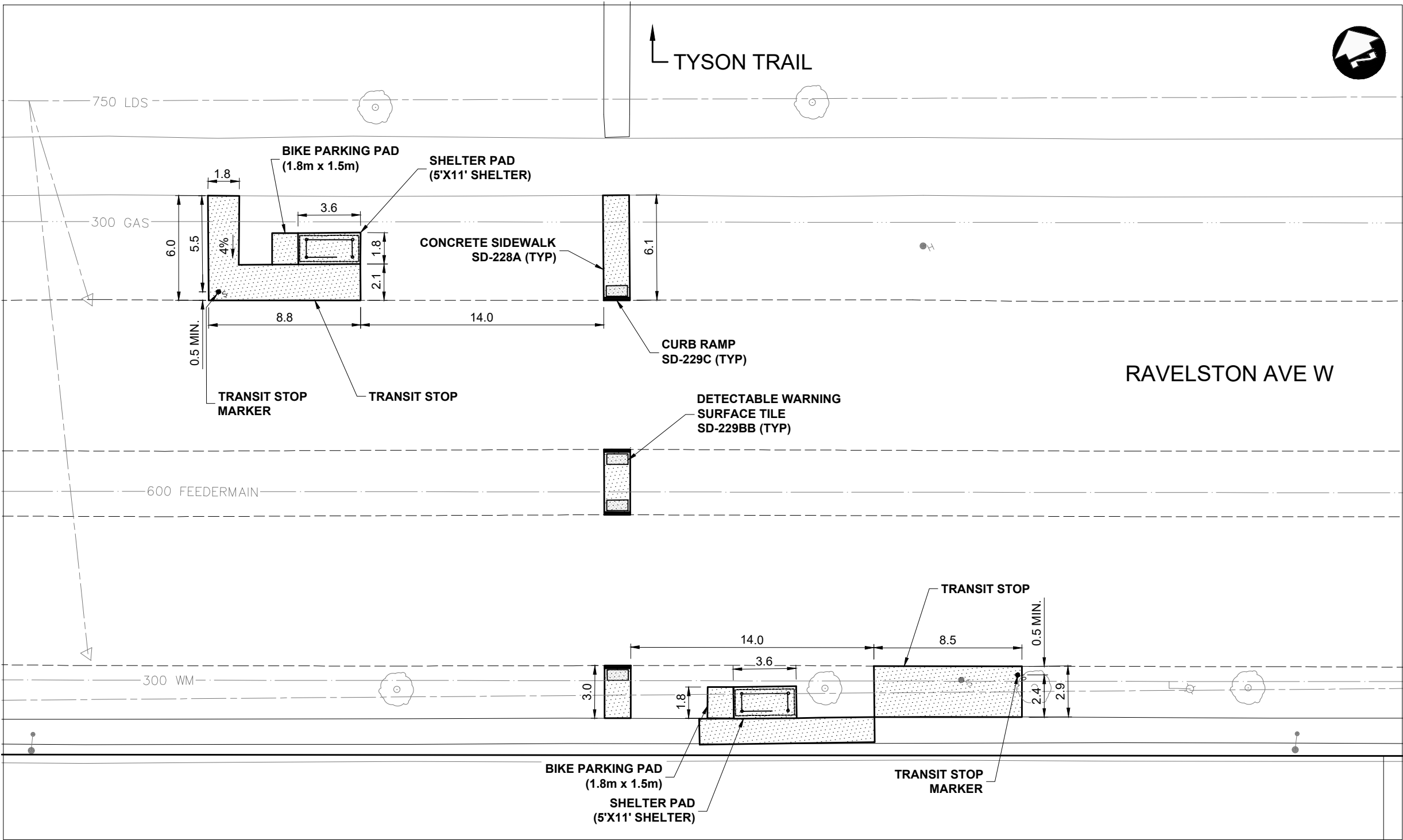


APPENDIX 'C'
TRANSIT STOP IMPROVEMENTS



PRELIMINARY ONLY
NOT FOR CONSTRUCTION

	HYDRANT		150 WM	WATERMAIN	150 WM		CONCRETE ROAD	
	VALVE		300 LDS	LAND DRAINAGE SEWER	300 LDS		ASPHALT ROAD	
	CURB STOP		250 WWS	WASTE WATER SEWER	250 WWS		CONC ROAD W/ASP OVERLAY	
	LIGHT STANDARD		HYDRO	HYDRO	HYDRO		CONCRETE SIDEWALK	
	HYDRO POLE		BELLMTS	BELLMTS	BELLMTS		ASPHALT PATH	
	TREE		100 GAS	GAS	100 GAS		LANDSCAPING FEATURE	
	GEODETIC BENCH MARK		T.S.	TRAFFIC SIGNALS	T.S.		GRASS/SOD	
	SURVEY BAR		S.L.	STREET LIGHTS	S.L.		ELEVATION	
	MANHOLE			TRAFFIC SIGNAL POLE			PROPERTY LINE	
	CATCH BASIN			PAVING STONE			CURB RAMP	
	CATCH PIT			CURB RENEWAL			DETECTABLE TILE	
EXISTING	LEGEND—PLAN	PROPOSED	EXISTING	LEGEND—PLAN	PROPOSED	EXISTING	LEGEND—PLAN	PROPOSED

METRIC	
WHOLE NUMBERS INDICATE MILLIMETRES DECIMALIZED NUMBERS INDICATE METRES	

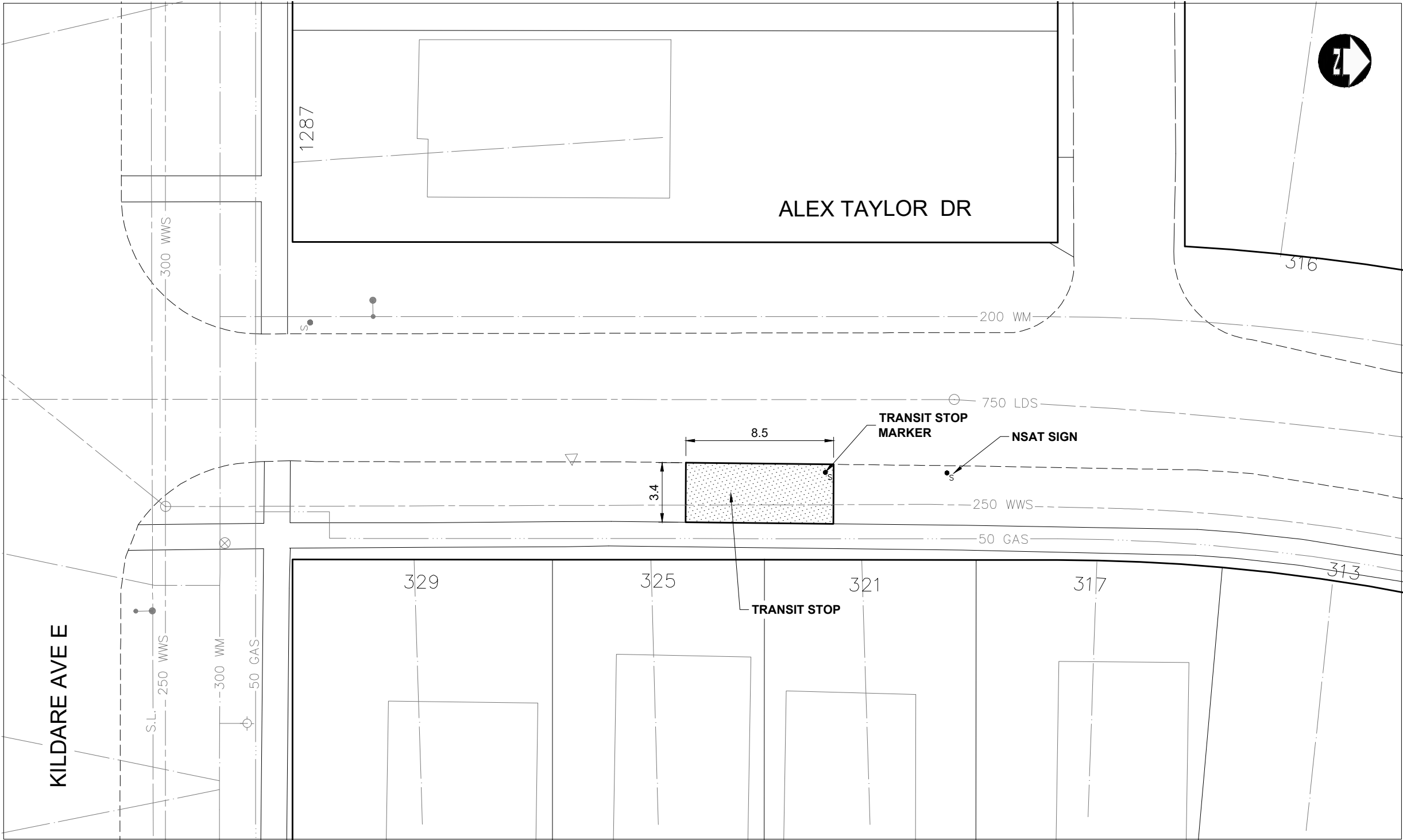
B.M.	ELEV.
1	ISSUED FOR TENDER
NO.	REVISIONS
26/03/24	DATE
DBW	BY

DESIGNED BY	MW
DRAWN BY	TJH
CHECKED BY	MRD
APPROVED BY	DBW
HOR. SCALE	1:250
VERTICAL	—
DATE	

RELEASED FOR CONSTRUCTION
DATE

ENGINEER'S SEAL
CONSULTANT PROJECT NUMBER
25-2191

THE CITY OF WINNIPEG PUBLIC WORKS DEPARTMENT	
2026 RESIDENTIAL STREET RENEWALS PROGRAM - DAY STREET AND VARIOUS OTHER LOCATIONS	
TRANSIT STOP IMPROVEMENTS	
TRANSCONA BOULEVARD	
CITY DRAWING NUMBER	135-2026
SHEET C1	OF
TENDER NO.	



PRELIMINARY ONLY
NOT FOR CONSTRUCTION

	HYDRANT			WATERMAIN			CONCRETE ROAD
	VALVE			LAND DRAINAGE SEWER			ASPHALT ROAD
	CURB STOP			WASTE WATER SEWER			CONC ROAD W/ASP OVERLAY
	LIGHT STANDARD			HYDRO			CONCRETE SIDEWALK
	HYDRO POLE			BELLMTS			ASPHALT PATH
	TREE			GAS			LANDSCAPING FEATURE
	GEODETIC BENCH MARK			TRAFFIC SIGNALS			GRASS/SOD
	SURVEY BAR			STREET LIGHTS			ELEVATION
	MANHOLE			TRAFFIC SIGNAL POLE			PROPERTY LINE
	CATCH BASIN			PAVING STONE			CURB RAMP
	CATCH PIT			CURB RENEWAL			DETECTABLE TILE
EXISTING	LEGEND—PLAN	PROPOSED	EXISTING	LEGEND—PLAN	PROPOSED	EXISTING	LEGEND—PLAN

METRIC

WHOLE NUMBERS INDICATE MILLIMETRES
DECIMALIZED NUMBERS INDICATE METRES

B.M.	ELEV.
1	ISSUED FOR TENDER
NO.	REVISIONS
DATE	DATE

DESIGNED BY	MW
DRAWN BY	TJH
CHECKED BY	MRD
APPROVED BY	DBW
HOR. SCALE	1:250
VERTICAL	—
DATE	DATE

RELEASED FOR CONSTRUCTION
DATE

ENGINEER'S SEAL
CONSULTANT PROJECT NUMBER
25-2191

THE CITY OF WINNIPEG
PUBLIC WORKS DEPARTMENT

2026 RESIDENTIAL STREET RENEWALS PROGRAM -
DAY STREET AND VARIOUS OTHER LOCATIONS

TRANSIT STOP IMPROVEMENTS

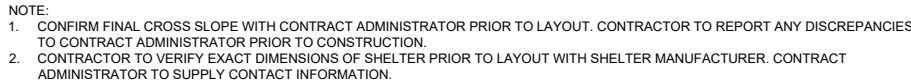
KILDARE AVENUE EAST

CITY DRAWING NUMBER

SHEET C4 OF

TENDER NO.

135-2026



SCALE: 1:25



- CONCRETE NOTES:
14. ALL CONCRETE WORK SHALL BE IN ACCORDANCE WITH CAN3-A23.1-M90 - CONCRETE CONSTRUCTION.
 15. PROPORTION NORMAL DENSITY CONCRETE IN ACCORDANCE WITH CAN-A23.1-M90. REFER TO SPECIFICATION FOR DESIGN MIXES.
 16. CONSTRUCT FORMWORK, SHORING AND BRACING TO MEET DESIGN, CODE AND CAN3-A23.1-M90 REQUIREMENTS, ACCURATELY, SO THAT RESULTANT FINISHED CONCRETE CONFORMS TO SHAPES, LINES AND DIMENSIONS INDICATED ON THE DRAWINGS.
 17. CONSTRUCTION JOINTS, OUR SCHEDULING AND WORK PROCEDURES SHALL BE DISCUSSED WITH THE CONTRACT ADMINISTRATOR PRIOR TO COMMENCING CONSTRUCTION.
 18. FOR COLD WEATHER CONCRETING, ALL ICE, SNOW AND FROST SHALL BE REMOVED FROM FORMWORK AND THE TEMPERATURES OF ALL CONTRACT SURFACES SHALL BE RAISED ABOVE 10°C FOR 24 HOURS PRIOR TO CASTING CONCRETE SHALL BE NOT LESS THAN 20C NOR MORE THAN 5C FOR AN ADDITIONAL 4 DAYS.
 19. NOTIFY THE CONTRACT ADMINISTRATOR 48 HOURS PRIOR TO POURING CONCRETE.
 20. THREE CONCRETE TEST CYLINDERS AND ONE SLUMP TEST SHALL BE TAKEN FOR EVERY 75 CUBIC METERS OF EACH CLASS OF CONCRETE PLACED OR FOR EACH DAY OF CONCRETE PLACEMENT IF THE LATTER IS LESS THAN 75 CUBIC METERS. TESTING SHALL BE PERFORMED IN ACCORDANCE WITH CAN3-A23.1-M90.

PRELIMINARY ONLY
NOT FOR CONSTRUCTION

	HYDRANT		150 WM	WATERMAIN	150 WM		CONCRETE ROAD		ASPHALT ROAD	METRIC WHOLE NUMBERS INDICATE MILLIMETRES DECIMALIZED NUMBERS INDICATE METRES	B.M. ELEV.					DESIGNED BY	MW		ENGINEER'S SEAL	 THE CITY OF WINNIPEG PUBLIC WORKS DEPARTMENT	2026 RESIDENTIAL STREET RENEWALS PROGRAM - DAY STREET AND VARIOUS OTHER LOCATIONS	CITY DRAWING NUMBER						
	VALVE		300 LDS	LAND DRAINAGE SEWER	300 LDS		CONC ROAD W/ASP OVERLAY		CONCRETE SIDEWALK		DRAWN BY	TJH	CHECKED BY	MRD			APPROVED BY		DBW			RELEASED FOR CONSTRUCTION	CONSULTANT PROJECT NUMBER	25-2191	TRANSIT STOP IMPROVEMENTS	SHEET C5	OF	
	CURB STOP		250 WWS	WASTE WATER SEWER	250 WWS		ASPHALT PATH		LANDSCAPING FEATURE																			
	LIGHT STANDARD		HYDRO	HYDRO	HYDRO		CONCRETE SIDEWALK		CONCRETE SIDEWALK																			
	HYDRO POLE		BELLMTS	BELLMTS	BELLMTS		ASPHALT PATH		ASPHALT PATH																			
	TREE		100 GAS	GAS	100 GAS		LANDSCAPING FEATURE		LANDSCAPING FEATURE																			
	GEODETIC BENCH MARK		T.S.	TRAFFIC SIGNALS	T.S.		GRASS/SOD		GRASS/SOD																			
	SURVEY BAR		S.L.	STREET LIGHTS	S.L.		ELEVATION		ELEVATION																			
	MANHOLE		232.000	232.000	232.000		PROPERTY LINE		PROPERTY LINE																			
	CATCH BASIN		232.000	232.000	232.000		CURB RAMP		CURB RAMP																			
	CATCH PIT		232.000	232.000	232.000		DETECTABLE TILE		DETECTABLE TILE																			
EXISTING	LEGEND-PLAN	PROPOSED	EXISTING	LEGEND-PLAN	PROPOSED	EXISTING	LEGEND-PLAN	PROPOSED	EXISTING																			

1	ISSUED FOR TENDER	26/03/24	DBW					
NO.	REVISIONS	DATE	BY	DATE				

DATE	
------	--