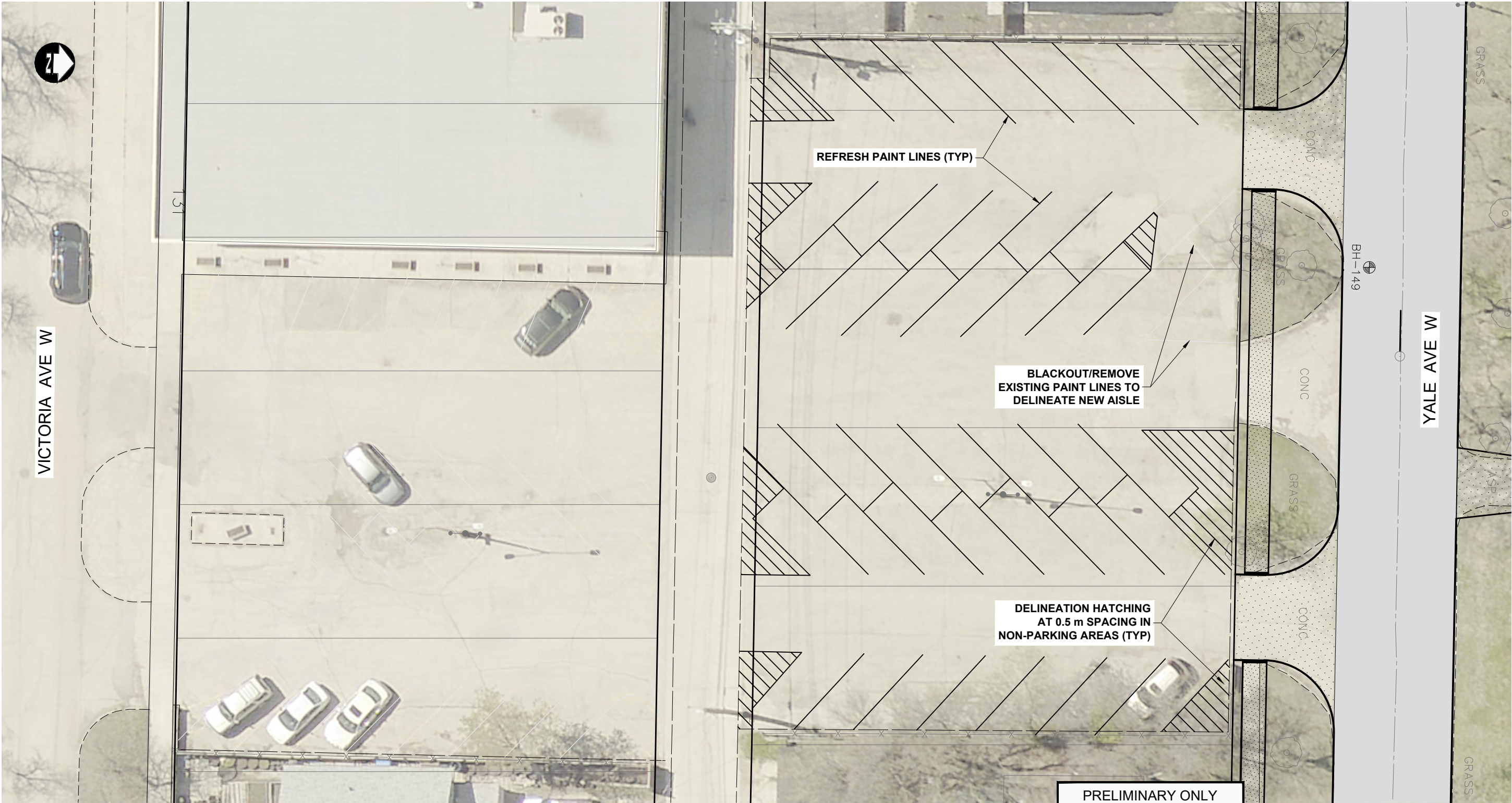


## **APPENDIX 'D'**

### **YALE AVENUE - PARKING LOT LINE PAINTING**



	HYDRANT		150 WM	WATERMAIN	150 WM		CONCRETE ROAD
	VALVE		300 LDS	LAND DRAINAGE SEWER	300 LDS		ASPHALT ROAD
	CURB STOP		250 WWS	WASTE WATER SEWER	250 WWS		CONC ROAD W/ASP OVERLAY
	LIGHT STANDARD		HYDRO	HYDRO	HYDRO		CONCRETE SIDEWALK
	HYDRO POLE		BELLMTS	BELLMTS	BELLMTS		ASPHALT PATH
	TREE		100 GAS	GAS	100 GAS		LANDSCAPING FEATURE
	GEODETIC BENCH MARK		T.S.	TRAFFIC SIGNALS	T.S.		GRASS/SOD
	SURVEY BAR		S.L.	STREET LIGHTS	S.L.		ELEVATION
	MANHOLE		TRAFFIC SIGNAL POLE	TRAFFIC SIGNAL POLE	TRAFFIC SIGNAL POLE		PROPERTY LINE
	CATCH BASIN		PAVING STONE	PAVING STONE	PAVING STONE		CURB RAMP
	CATCH PIT		CURB RENEWAL	CURB RENEWAL	CURB RENEWAL		DETECTABLE TILE
EXISTING	LEGEND—PLAN	PROPOSED	EXISTING	LEGEND—PLAN	PROPOSED	EXISTING	LEGEND—PLAN

METRIC

WHOLE NUMBERS INDICATE MILLIMETRES  
DECIMALIZED NUMBERS INDICATE METRES

B.M.	ELEV.
1	ISSUED FOR TENDER
NO.	REVISIONS
DATE	DATE
BY	DATE

DESIGNED BY	TJH
DRAWN BY	TJH
CHECKED BY	MRD
APPROVED BY	DBW
HOR. SCALE	1:250
VERTICAL	—
DATE	DATE

RELEASED FOR CONSTRUCTION
DATE

ENGINEER'S SEAL
CONSULTANT PROJECT NUMBER
25-2191

	<b>THE CITY OF WINNIPEG</b> PUBLIC WORKS DEPARTMENT
2026 RESIDENTIAL STREET RENEWALS PROGRAM - DAY STREET AND VARIOUS OTHER LOCATIONS	CITY DRAWING NUMBER
LINE PAINTING	SHEET D1 OF
TRANSCONA CHRISTIAN REFORMED CHURCH PARKING LOT	TENDER NO.
	135-2026