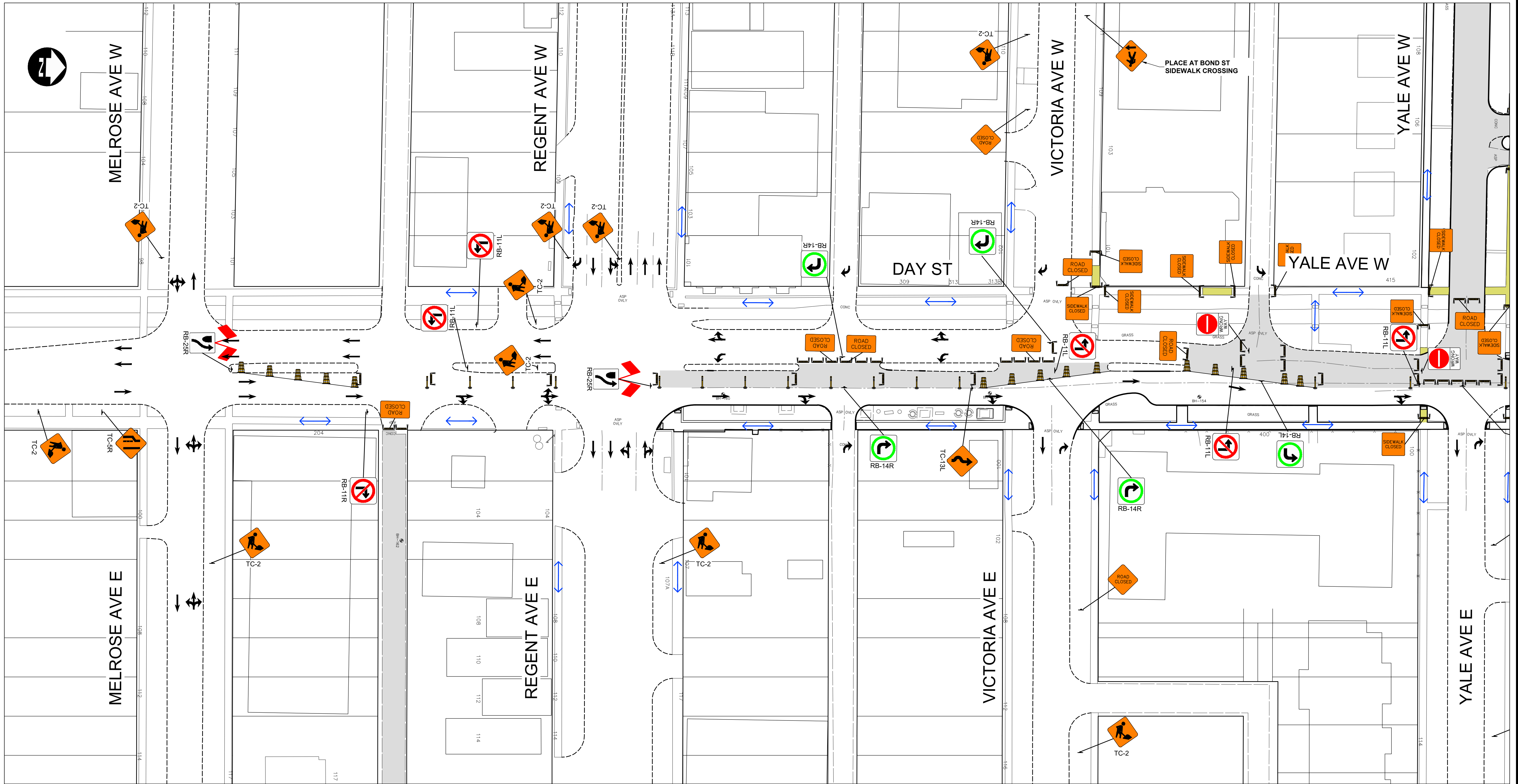


C:\pwworking\directory\projects\2025\dillon_40\dwg\cans58542_252191-01-CON-STAGING.dwg



METRIC

WHOLE NUMBERS INDICATE MILLIMETRES
DECIMALIZED NUMBERS INDICATE METRES

LEGEND - STAGING

PERMANENT ROADWAY CONSTRUCTION

PERMANENT SIDEWALK/MUP CONSTRUCTION

TALL CONE

CHANNELIZATION BARREL (TC-63)

REFLECTORIZED LIGHT BARRICADE (TC-64A)

PEDESTRIAN CHANNELIZATION DEVICE

VEHICULAR TRAFFIC

PEDESTRIAN/CYCLIST TRAFFIC

- NOTES:
1. ALL TRAFFIC SIGNAGE AND TEMPORARY TRAFFIC CONTROL TO CONFORM WITH THE LATEST REVISION OF THE CITY OF WINNIPEG MANUAL OF TEMPORARY TRAFFIC CONTROL (MTTC) ON CITY STREETS.

2. CONTRACTOR SHALL MAINTAIN SAFE PEDESTRIAN ACCESS AND CROSSINGS. WHERE SIDEWALKS ARE LOCATED ON BOTH SIDES OF THE STREET, CONTRACTOR MUST MAINTAIN PEDESTRIAN ACCESS ON ONE SIDE AT ALL TIMES.

3. WHERE APPLICABLE, CONSTRUCTION IS TO BE COMPLETED LANE AT A TIME. WHEN CONSTRUCTION IS COMPLETE IN THE FIRST LANE, TRAFFIC WILL BE MOVED TO THE COMPLETED LANE AND TRAFFIC CONTROL MIRRORED.

4. PARKING TO BE REMOVED AT TIME OF CONSTRUCTION.

5. RESIDENTIAL APPROACH ACCESS MUST BE MAINTAINED AT ALL TIMES.

6. BARRICADES SHALL BE PLACED AT EACH PRIVATE APPROACH WHEN NECESSARY.

7. BARRICADES AND POLY POSTS SHALL BE PLACED AT REQUIRED SPACING AS PER MTTC.

8. ADVANCED SIDEWALK CLOSURE SIGNS TO BE PLACED AS PER MTTC.

9. ALL SIDEWALK CLOSED BARRICADES SHALL BE INSTALLED WITH A BOTTOM BARRIER IN ACCORDANCE WITH THE MTTC.

PRELIMINARY ONLY
NOT FOR CONSTRUCTION

UNDERGROUND STRUCTURES		B.M. ELEV.	DESIGNED BY	DRC		ENGINEER'S SEAL	THE CITY OF WINNIPEG PUBLIC WORKS DEPARTMENT	
SUPPLY U/G STRUCTURES		DATE	DRAWN BY	DRC		2026 RESIDENTIAL STREETS RENEWAL PROGRAM - DAY STREET AND VARIOUS OTHER LOCATIONS		CITY DRAWING NUMBER
			CHECKED BY	AJF		1		24
			APPROVED BY	DBW		2		41
LOCATION OF UNDERGROUND STRUCTURES AS SHOWN ARE BASED ON THE BEST INFORMATION AVAILABLE. BUT NO GUARANTEE IS GIVEN THAT ALL EXISTING UTILITIES ARE SHOWN OR THAT THE GIVEN LOCATIONS ARE EXACT. CONFIRMATION OF EXISTENCE AND EXACT LOCATION OF ALL SERVICES MUST BE OBTAINED FROM THE INDIVIDUAL UTILITIES BEFORE PROCEEDING WITH CONSTRUCTION.			HOR. SCALE	1:400	RELEASED FOR CONSTRUCTION	CONSULTANT PROJECT NUMBER	DAY STREET - STAGE 2 (1 OF 3)	
			VERTICAL	-	DATE	25-2191	CONSULTANT DRAWING NUMBER	
1 ISSUED FOR TENDER		26/03/24	DBW					
NO. REVISIONS		DATE	BY	DATE				