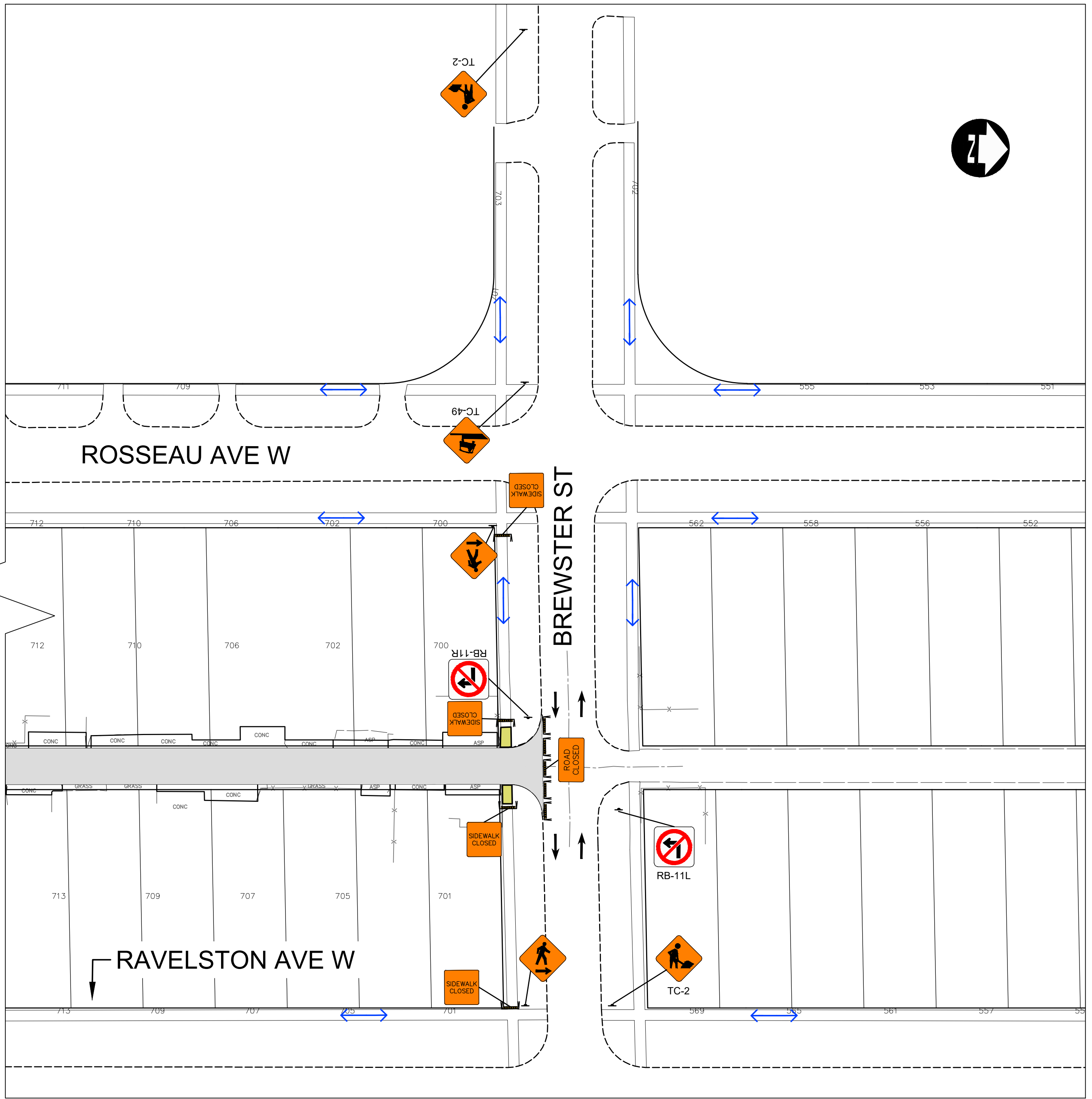
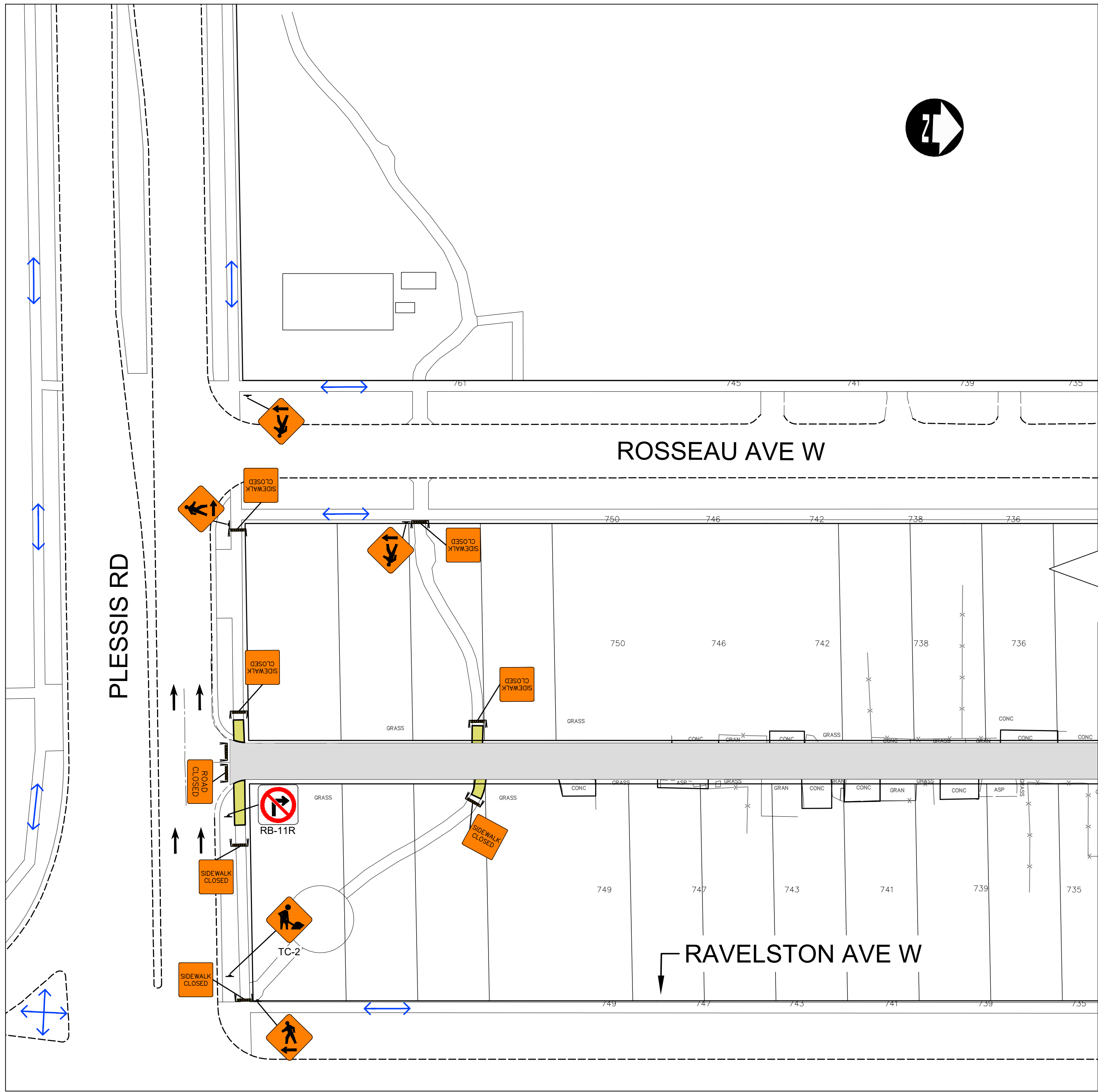


C:\dw\_working\_directory\projects\_2025\dillon\_40\dw\cims58542\_252191-CT-CON-STAGING.dwg



**METRIC**




WHOLE NUMBERS INDICATE MILLIMETRES  
DECIMALIZED NUMBERS INDICATE METRES

LEGEND - STAGING			
	PERMANENT ROADWAY CONSTRUCTION		REFLECTORIZED LIGHT BARRICADE (TC-64A)
	PERMANENT SIDEWALK/MUP CONSTRUCTION		PEDESTRIAN CHANNELIZATION DEVICE
	TALL CONE		VEHICULAR TRAFFIC
	CHANNELIZATION BARREL (TC-63)		PEDESTRIAN/CYCLIST TRAFFIC

**NOTES:**

- ALL TRAFFIC SIGNAGE AND TEMPORARY TRAFFIC CONTROL TO CONFORM WITH THE LATEST REVISION OF THE CITY OF WINNIPEG MANUAL OF TEMPORARY TRAFFIC CONTROL (MTTC) ON CITY STREETS.
- CONTRACTOR SHALL MAINTAIN SAFE PEDESTRIAN ACCESS AND CROSSINGS. WHERE SIDEWALKS ARE LOCATED ON BOTH SIDES OF THE STREET, CONTRACTOR MUST MAINTAIN PEDESTRIAN ACCESS ON ONE SIDE AT ALL TIMES.
- WHERE APPLICABLE, CONSTRUCTION IS TO BE COMPLETED LANE AT A TIME. WHEN CONSTRUCTION IS COMPLETE IN THE FIRST LANE, TRAFFIC WILL BE MOVED TO THE COMPLETED LANE AND TRAFFIC CONTROL MIRRORRED.
- PARKING TO BE REMOVED AT TIME OF CONSTRUCTION.
- RESIDENTIAL APPROACH ACCESS MUST BE MAINTAINED AT ALL TIMES.
- BARRICADES SHALL BE PLACED AT EACH PRIVATE APPROACH WHEN NECESSARY.
- BARRICADES AND POLY POSTS SHALL BE PLACED AT REQUIRED SPACING AS PER MTTC.
- ADVANCED SIDEWALK CLOSURE SIGNS TO BE PLACED AS PER MTTC.
- ALL SIDEWALK CLOSED BARRICADES SHALL BE INSTALLED WITH A BOTTOM BARRIER IN ACCORDANCE WITH THE MTTC.

**PRELIMINARY ONLY  
NOT FOR CONSTRUCTION**

UNDERGROUND STRUCTURES		B.M. ELEV.		DESIGNED BY DRC		 <b>DILLON</b> CONSULTING		 <b>THE CITY OF WINNIPEG</b> PUBLIC WORKS DEPARTMENT	2026 RESIDENTIAL STREETS RENEWAL PROGRAM - DAY STREET AND VARIOUS OTHER LOCATIONS		CITY DRAWING NUMBER			
SUPV. U/G STRUCTURES		DATE		DRAWN BY DRC					SHEET 29 OF 41		CONSULTANT DRAWING NUMBER			
LOCATION OF UNDERGROUND STRUCTURES AS SHOWN ARE BASED ON THE BEST INFORMATION AVAILABLE BUT NO GUARANTEE IS GIVEN THAT ALL EXISTING UTILITIES ARE SHOWN OR THAT THE GIVEN LOCATIONS ARE EXACT. CONFIRMATION OF EXISTENCE AND EXACT LOCATION OF ALL SERVICES MUST BE OBTAINED FROM THE INDIVIDUAL UTILITIES BEFORE PROCEEDING WITH CONSTRUCTION.				CHECKED BY AJF					RELEASED FOR CONSTRUCTION		CONSULTANT PROJECT NUMBER  25-2191		PLESSIS-ROSSEAU-RAVELSTON-BREWSTER ALLEY	
				APPROVED BY DBW										
				HOR. SCALE 1:400										
1 ISSUED FOR TENDER		26/03/24 DBW		VERTICAL —		DATE								
NO. REVISIONS		DATE BY		DATE										