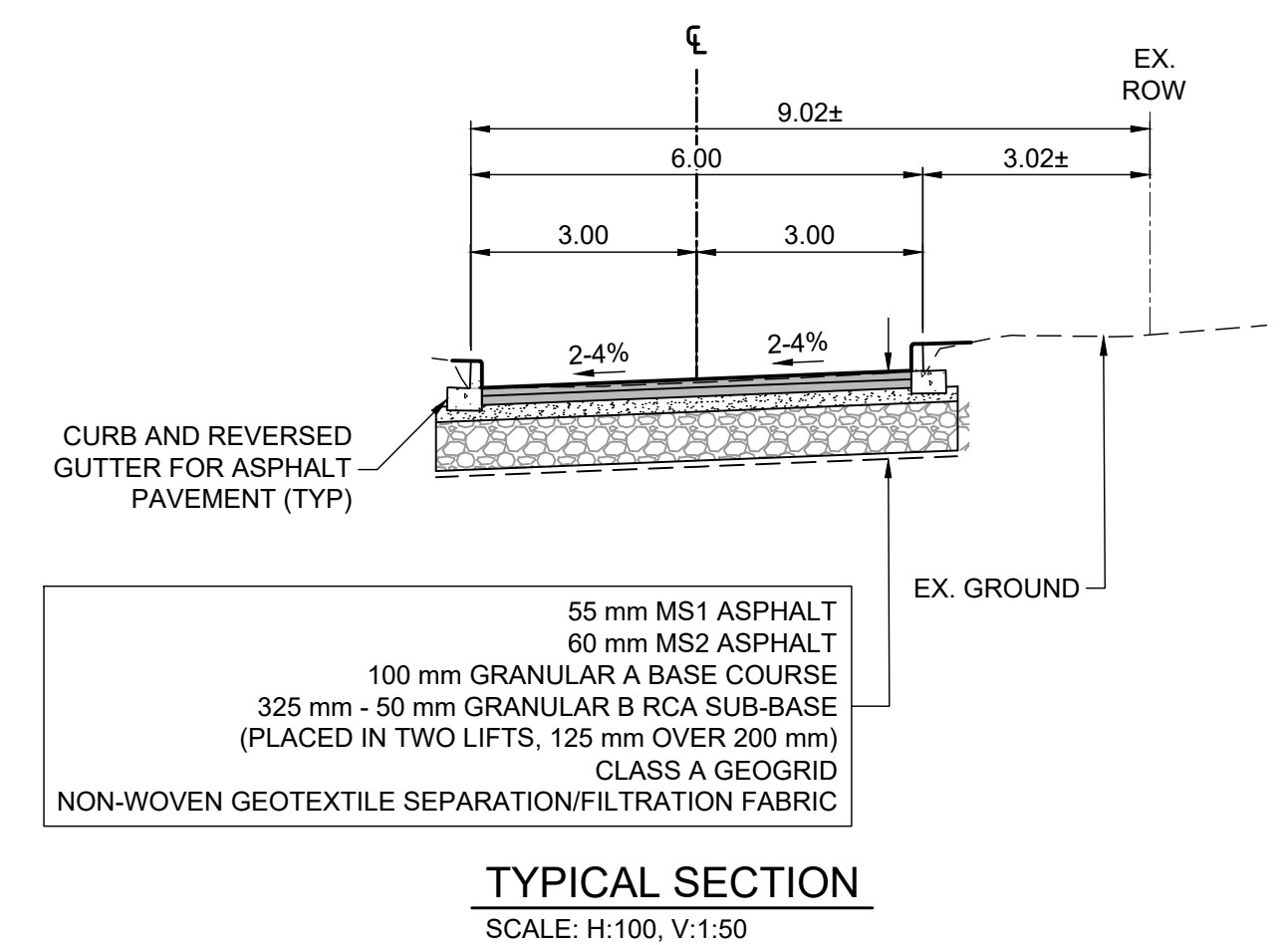
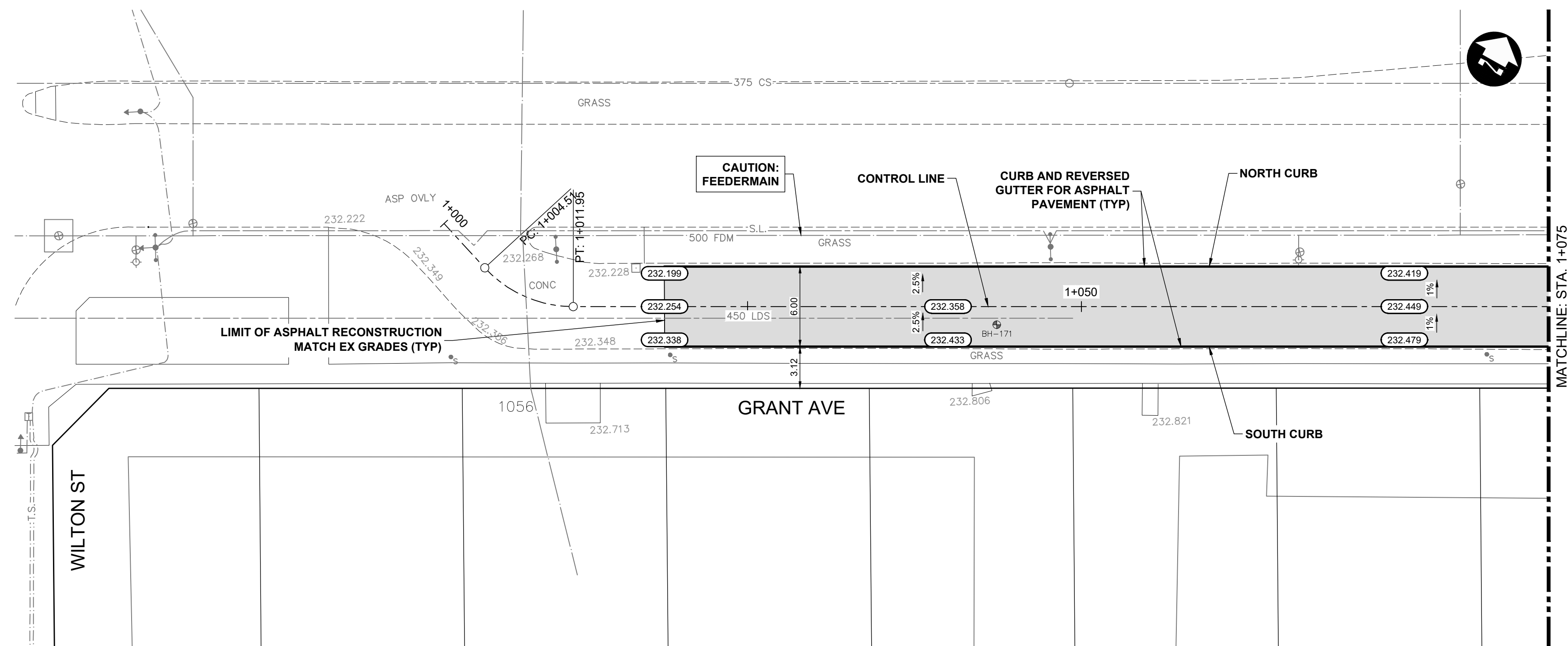


- CONSTRUCTION NOTES:**

 1. ALL WORK AND MATERIALS TO BE IN ACCORDANCE WITH LATEST REVISION OF THE CITY OF WINNIPEG STANDARD CONSTRUCTION SPECIFICATIONS.
 2. LEGAL PLAN AND UNDERGROUND INFORMATION FROM CITY OF WINNIPEG LBIS. CONTRACTOR TO VERIFY ALL UNDERGROUNDS IN THE FIELD.
 3. CONTRACTOR TO TAKE PRECAUTIONARY STEPS TO AVOID DAMAGE FROM CONSTRUCTION ACTIVITIES TO TREES WITHIN THE LIMITS OF CONSTRUCTION AS OUTLINED IN THE SPECIFICATIONS.
 4. LOCATION OF EXISTING SERVICES TO BE CONFIRMED IN THE FIELD BY THE CONTRACTOR.
 5. ALL DIMENSIONS ARE TO BACK OF CURB.
 6. LIMITS OF CURB AND SIDEWALK RECONSTRUCTION TO BE FINALIZED IN THE FIELD BY THE CONTRACT ADMINISTRATOR.
 7. ADJUST ALL WATER VALVES, MANHOLES, CATCH BASINS, CATCH PITS AND WATER SHUT OFF VALVES TO GRADE.
 8. ALL PRIVATE WALKWAYS TO BE ADJUSTED TO NEW SIDEWALK OR TOP OF CURB ELEVATION, AS REQUIRED.
 9. STREET LIGHT REQUIREMENTS, HYDRO POLES AND ANCHORS THAT REQUIRE TEMPORARY SUPPORT, REMOVAL OR REPLACEMENT, ARE TO BE DONE AT THE EXPENSE OF THE CONTRACTOR, AS NECESSARY.
 10. FOR ROAD RECONSTRUCTIONS, ALL WATER MAIN SERVICES NEED TO BE INSULATED UNLESS NOTED OTHERWISE. ADDITIONALLY, ALL CATCH BASINS, MANHOLES AND LEAD PIPES LOCATED WITHIN 2.0 m of A RESIDENTIAL SERVICE MUST BE INSULATED TO PROTECT THE SERVICE FROM POTENTIAL FUTURE FREEZING.
 11. CONSTRUCT MODIFIED BARRIER CURB (SD-203B) AT ALL INTERSECTION RADI AND ALLEY RADI.
 12. CONTRACTOR TO OVERLAY DRIVEWAYS TO ENSURE POSITIVE DRAINAGE TO NEW STREET GRADES. FINAL LIMITS TO BE DETERMINED IN THE FIELD BY CONTRACT ADMINISTRATOR.
 13. REFER TO TENDER FOR DETAILS REGARDING TRAFFIC MANAGEMENT.



METRIC

WHOLE NUMBERS INDICATE MILLIMETRES
DECIMALIZED NUMBERS INDICATE METRES

HYDRANT VALVE CURB STOP LIGHT STANDARD HYDRO POLE TREE GEODETIC BENCH MARK SURVEY BAR MANHOLE CATCH BASIN CATCH PIT		150 WM 300 LBS 250 WWS HYDRO BELLMTS 100 GAS T.S. S.L. ● ■ ▼		WATERMAIN LAND DRAINAGE SEWER WASTE WATER SEWER HYDRO BELLMTS GAS TRAFFIC SIGNALS STREET LIGHTS TRAFFIC SIGNAL POLE PAVING STONE CURB RENEWAL		150 WM 300 LBS 250 WWS HYDRO BELLMTS 100 GAS T.S. S.L. ● ■ ▼		CONCRETE ROAD ASPHALT ROAD CONC ROAD W/ASP OVERLAY CONCRETE SIDEWALK ASPHALT PATH PAVEMENT REPAIR FABRIC GRASS/SOD ELEVATION PROPERTY LINE CURB RAMP DETECTABLE TILE		UNDERGROUND STRUCTURES SUPV. U/G STRUCTURES DATE		B.M. ELEV. NO. REVISIONS 0 ISSUED FOR TENDER		DESIGNED BY TJH DRAWN BY HDT CHECKED BY LAS APPROVED BY DBW HOR. SCALE 1:250 VERTICAL 1:10		 RELEASED FOR CONSTRUCTION DATE		ENGINEER'S SEAL CONSULTANT PROJECT NUMBER 25-2151		 THE CITY OF WINNIPEG PUBLIC WORKS DEPARTMENT 2026 LOCAL STREET RENEWALS PROGRAM GRANT SERVICE ROAD (SOUTH) WILTON ST TO HARROW ST ASPHALT RECONSTRUCTION (START TO STA. 1+085)		CITY DRAWING NUMBER SHEET 04 OF 55 TENDER NUMBER 136-2026	
---	--	--	--	---	--	--	--	--	--	--	--	--	--	---	--	---------------------------------------	--	---	--	---	--	--	--