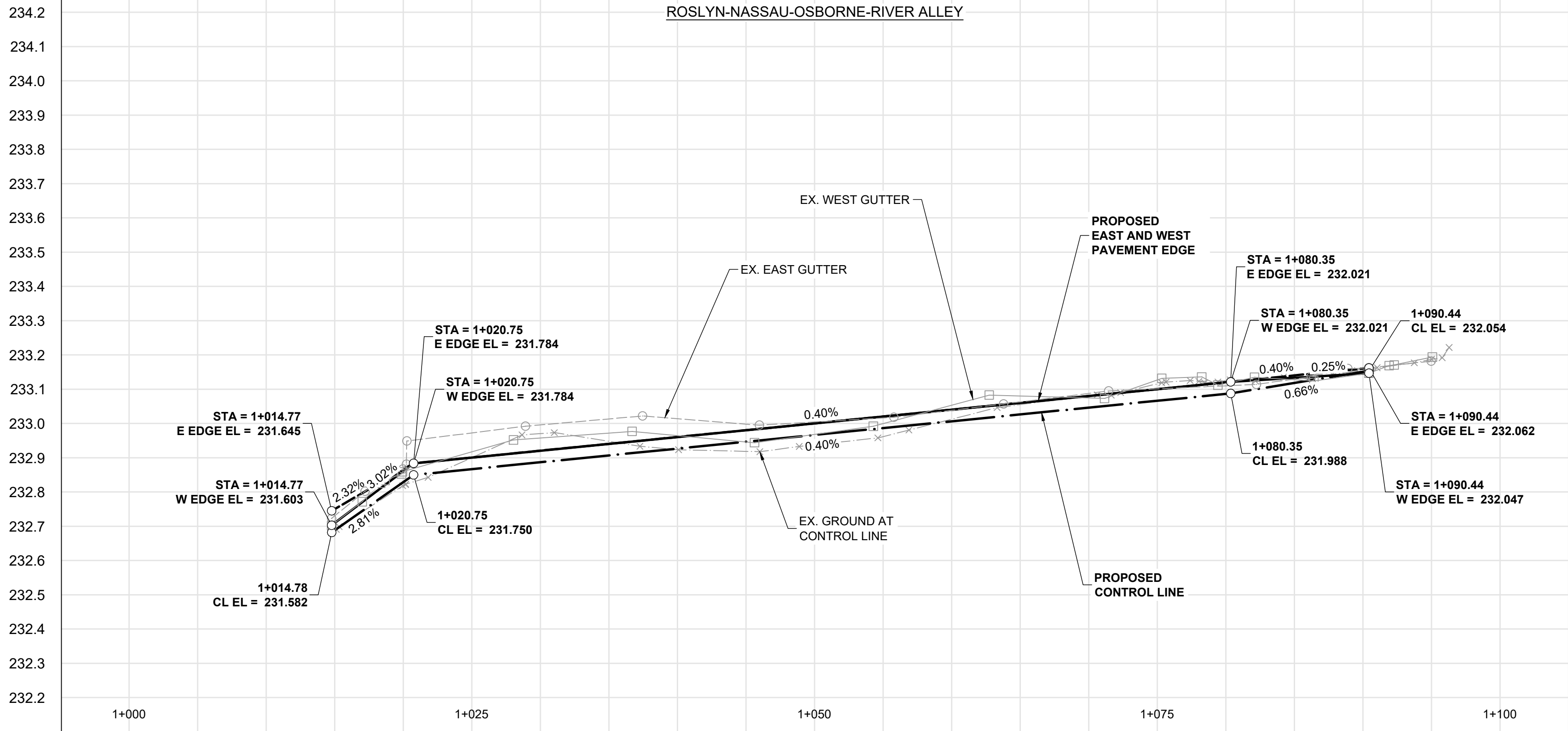
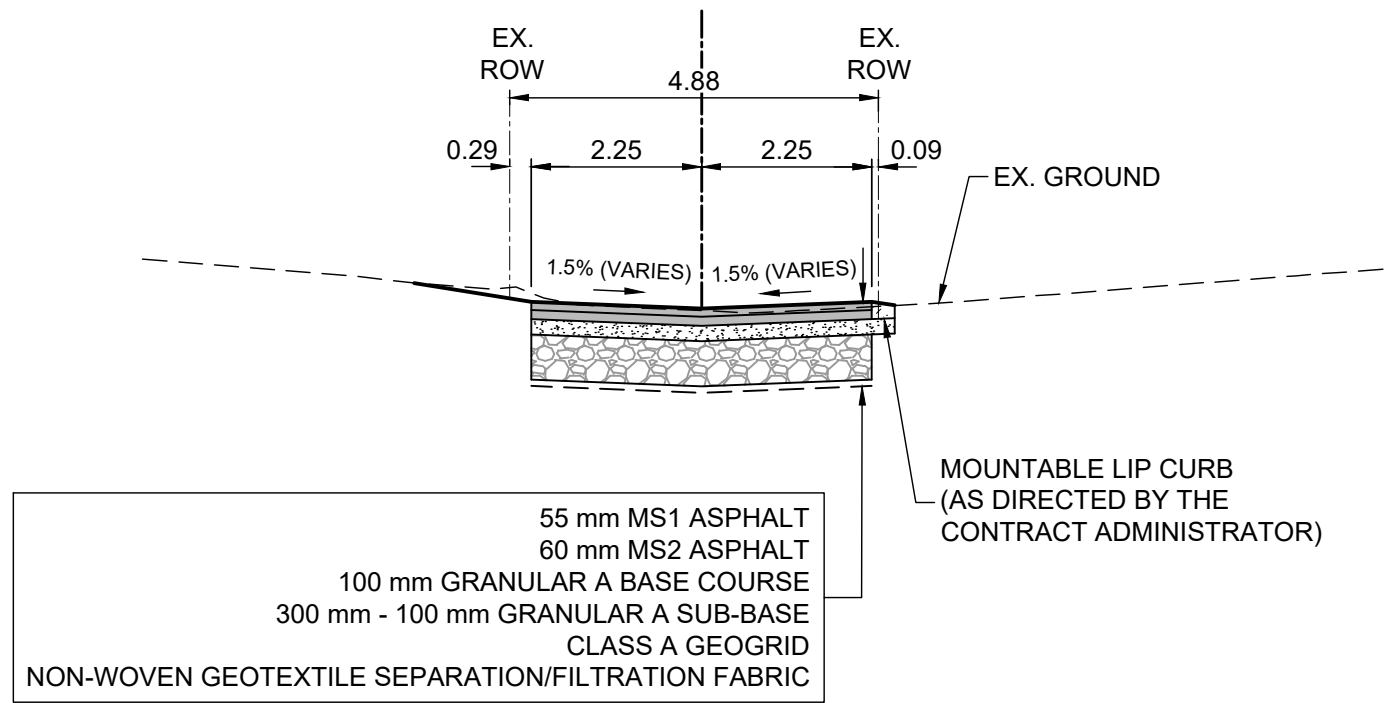
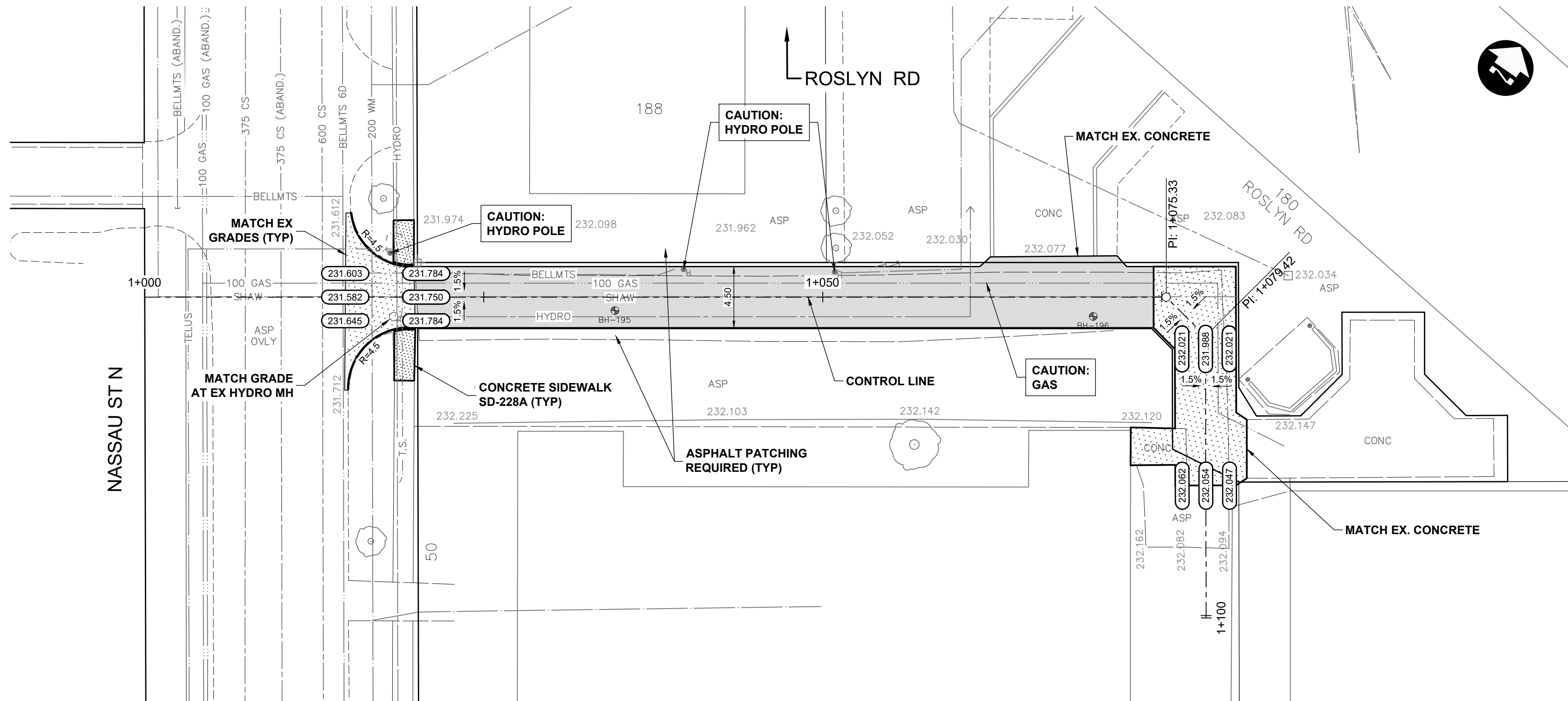


C:\pwworking\projects\2025\dillon_400h\mms56539\250151-CT-CON-ALLEY-ROSLYN.dwg



CONSTRUCTION NOTES:

- ALL WORK AND MATERIALS TO BE IN ACCORDANCE WITH LATEST REVISION OF THE CITY OF WINNIPEG STANDARD CONSTRUCTION SPECIFICATIONS.
- LEGAL PLAN AND UNDERGROUND INFORMATION FROM CITY OF WINNIPEG L.B.S. CONTRACTOR TO VERIFY ALL UNDERGROUNDS IN THE FIELD.
- CONTRACTOR TO TAKE PRECAUTIONARY STEPS TO AVOID DAMAGE FROM CONSTRUCTION ACTIVITIES TO TREES WITHIN THE LIMITS OF CONSTRUCTION AS OUTLINED IN THE SPECIFICATIONS.
- LOCATION OF EXISTING SERVICES TO BE CONFIRMED IN THE FIELD BY THE CONTRACTOR.
- ALL DIMENSIONS ARE TO BACK OF CURB.
- LIMITS OF CURB AND SIDEWALK RECONSTRUCTION TO BE FINALIZED IN THE FIELD BY THE CONTRACT ADMINISTRATOR.
- ADJUST ALL WATER VALVES, MANHOLES, CATCH BASINS, CATCH PITS AND WATER SHUT OFF VALVES TO GRADE.
- ALL PRIVATE WALKWAYS TO BE ADJUSTED TO NEW SIDEWALK OR TOP OF CURB ELEVATION, AS REQUIRED.
- STREET LIGHT STANDARDS, HYDRO POLES AND ANCHORS THAT REQUIRE TEMPORARY SUPPORT, REMOVAL OR REPLACEMENT, ARE TO BE DONE AT THE EXPENSE OF THE CONTRACTOR, AS NECESSARY.
- FOR ROAD RECONSTRUCTIONS, ALL WATER MAIN SERVICES NEED TO BE INSULATED UNLESS NOTED OTHERWISE. ADDITIONALLY, ALL CATCH BASINS, MANHOLES AND LEAD PIPES LOCATED WITHIN 2.0 m OF A RESIDENTIAL SERVICE MUST BE INSULATED TO PROTECT THE SERVICE FROM POTENTIAL FUTURE FREEZING.
- CONSTRUCT MODIFIED BARRIER CURB (SD-203B) AT ALL INTERSECTION RADII AND ALLEY RADII.
- CONTRACTOR TO OVERLAY DRIVEWAYS TO ENSURE POSITIVE DRAINAGE TO NEW STREET GRADES. FINAL LIMITS TO BE DETERMINED IN THE FIELD BY CONTRACT ADMINISTRATOR.
- REFER TO TENDER FOR DETAILS REGARDING TRAFFIC MANAGEMENT.



TYPICAL SECTION
SCALE: H:100, V:150

METRIC

WHOLE NUMBERS INDICATE MILLIMETRES
DECIMALIZED NUMBERS INDICATE METRES

EXISTING	LEGEND-PLAN	PROPOSED	EXISTING	LEGEND-PLAN	PROPOSED	EXISTING	LEGEND-PLAN	PROPOSED
HYDRANT			150 WM	WATERMAIN	150 WM	CONCRETE ROAD		
VALVE			300 LDS	LAND DRAINAGE SEWER	300 LDS	ASPHALT ROAD		
CURB STOP			250 WWS	WASTE WATER SEWER	250 WWS	CONC ROAD W/ASP OVERLAY		
LIGHT STANDARD			HYDRO	HYDRO	HYDRO	CONCRETE SIDEWALK		
HYDRO POLE			BELLMTS	BELLMTS	BELLMTS	ASPHALT PATH		
TREE			100 GAS	GAS	100 GAS	PAVEMENT REPAIR FABRIC		
GEODETIC BENCH MARK			T.S.	TRAFFIC SIGNALS	T.S.	GRASS/SOD		
SURVEY BAR			S.L.	STREET LIGHTS	S.L.	ELEVATION		
MANHOLE				TRAFFIC SIGNAL POLE		PROPERTY LINE		
CATCH BASIN				PAVING STONE		CURB RAMP		
CATCH PIT				CURB RENEWAL		DETECTABLE TILE		

UNDERGROUND STRUCTURES

SUPPLY: U/G STRUCTURES DATE

LOCATION OF UNDERGROUND STRUCTURES AS SHOWN ARE BASED ON THE BEST INFORMATION AVAILABLE. BUT NO GUARANTEE IS GIVEN THAT ALL EXISTING UTILITIES ARE SHOWN OR THAT THE GIVEN LOCATIONS ARE EXACT. CONFIRMATION OF EXISTENCE AND EXACT LOCATION OF ALL SERVICES MUST BE OBTAINED FROM THE INDIVIDUAL UTILITIES BEFORE PROCEEDING WITH CONSTRUCTION.

B.M. ELEV.	DESIGNED BY	DRAWN BY	CHECKED BY	APPROVED BY	HOR. SCALE	VERTICAL	NO.	REVISIONS	DATE	BY
	TJH	HDT	LAS	DBW	1:250	1:10	0	ISSUED FOR TENDER	26/03/27	LAS



ENGINEER'S SEAL	CONSULTANT PROJECT NUMBER
	25-2151

THE CITY OF WINNIPEG
PUBLIC WORKS DEPARTMENT

2026 LOCAL STREET RENEWALS PROGRAM
ROSLYN-NASSAU-OSBORNE-RIVER ALLEY
ASPHALT RECONSTRUCTION

CITY DRAWING NUMBER
SHEET 21 OF 55
TENDER NUMBER
136-2026