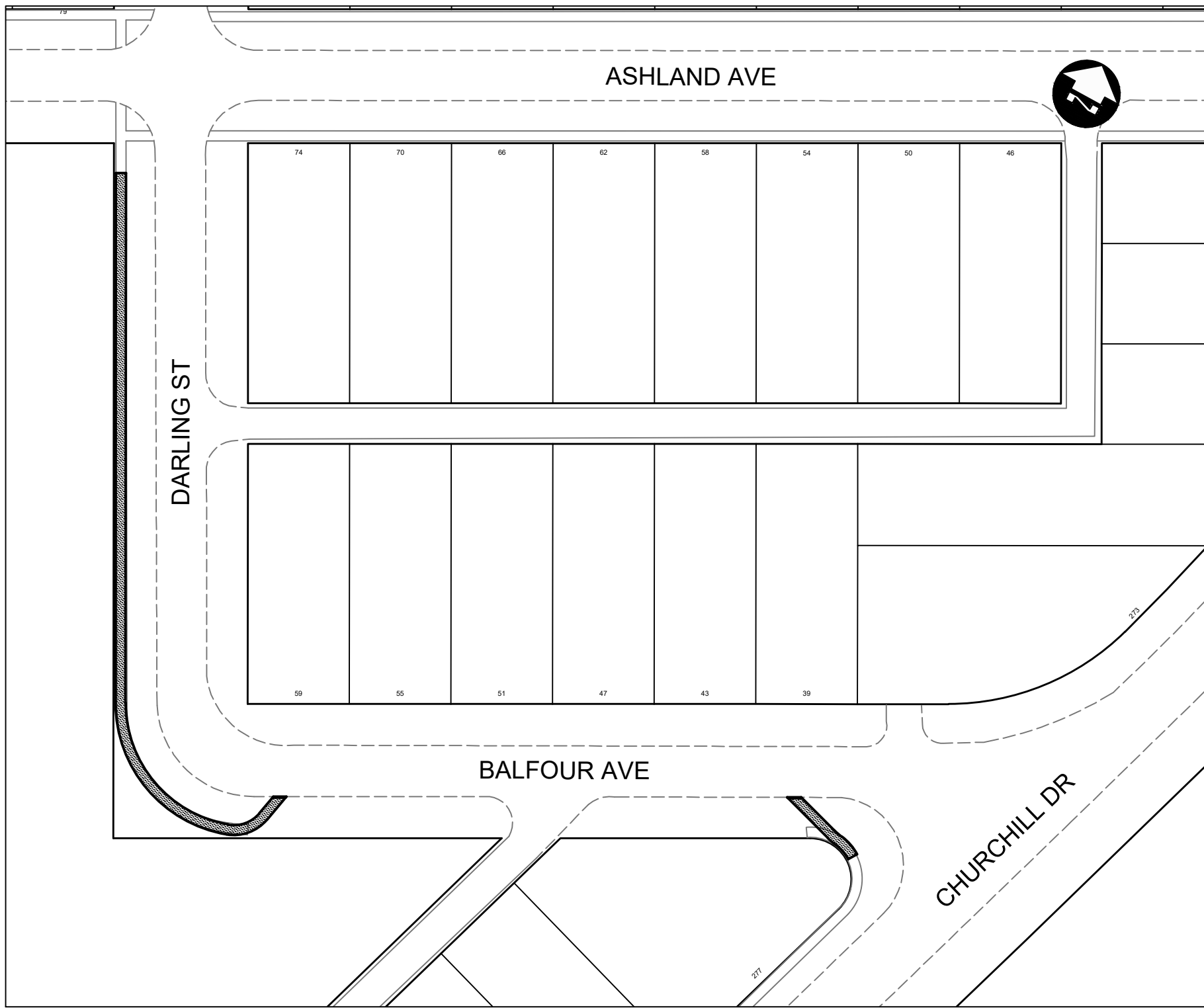
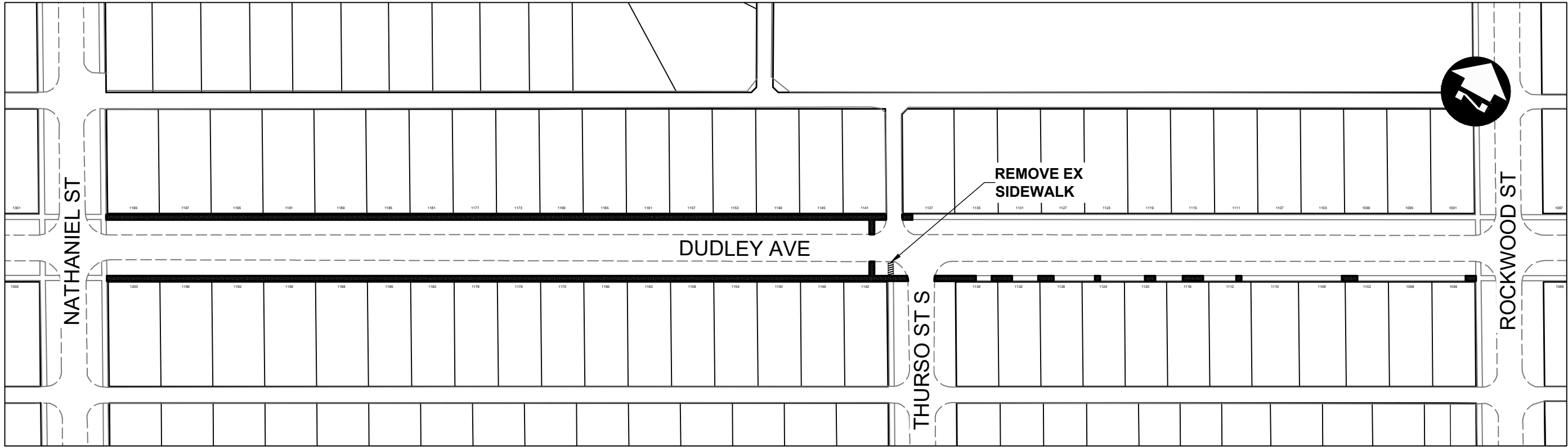


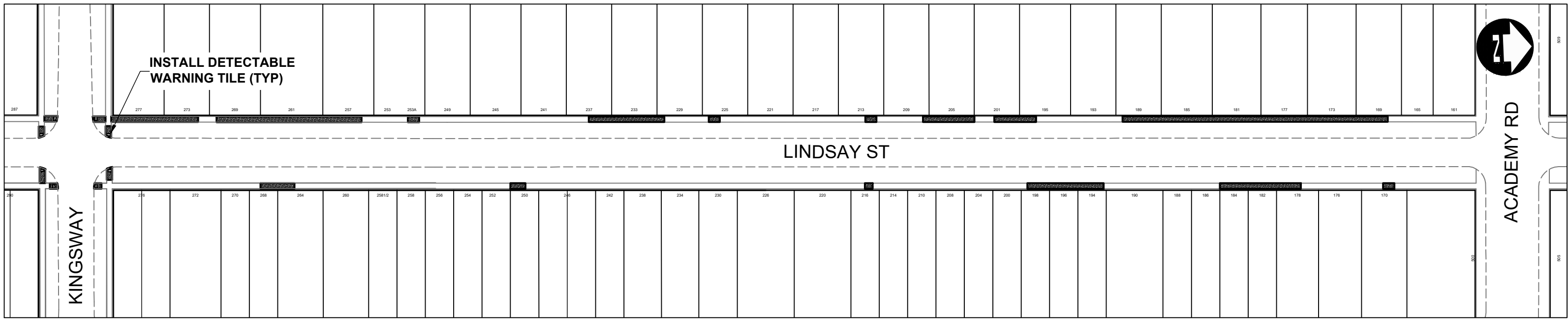
C:\pwworking\projects\2025\dillon\_400h\wms96539\250151-CT-CON-SIDEWALKS.dwg



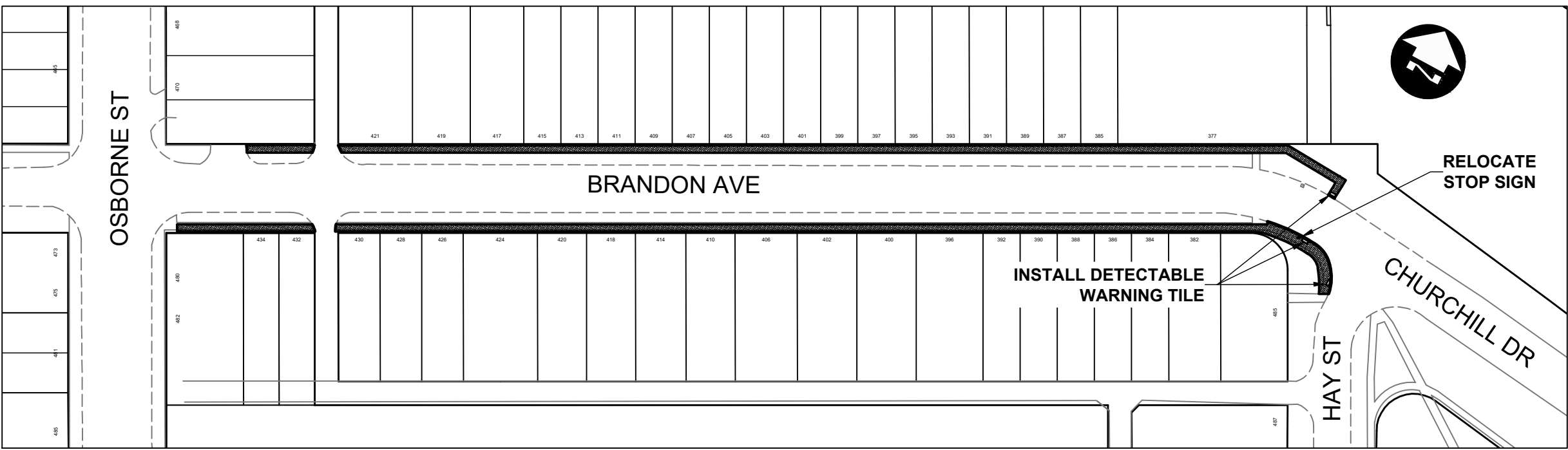
DARLING ST/ BALFOUR AVE FROM ASHLAND AVE TO CHURCHILL DR  
SCALE = 1:750



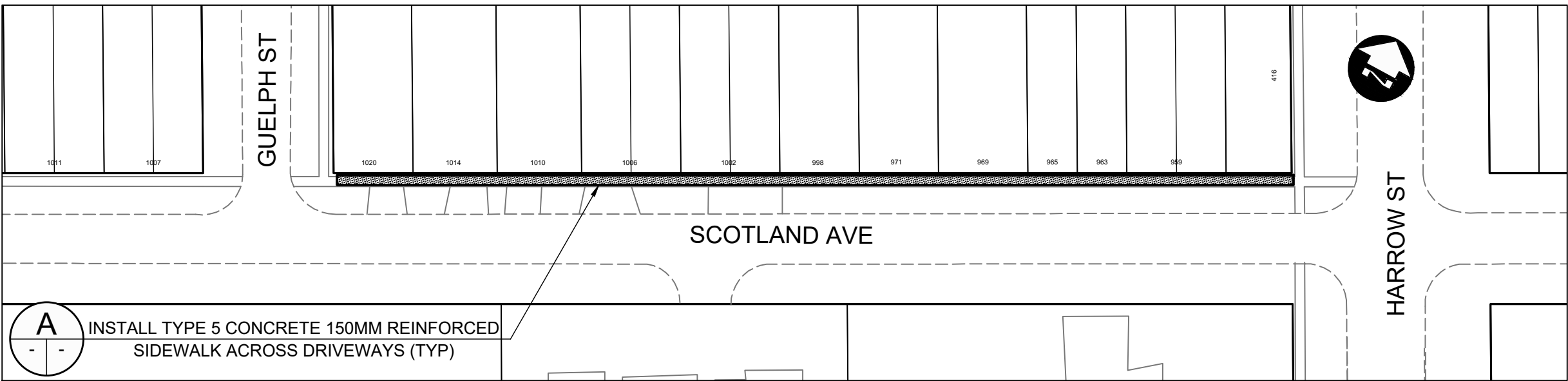
DUDLEY AVE FROM NATHANIEL ST TO ROCKWOOD ST  
SCALE = 1:1250



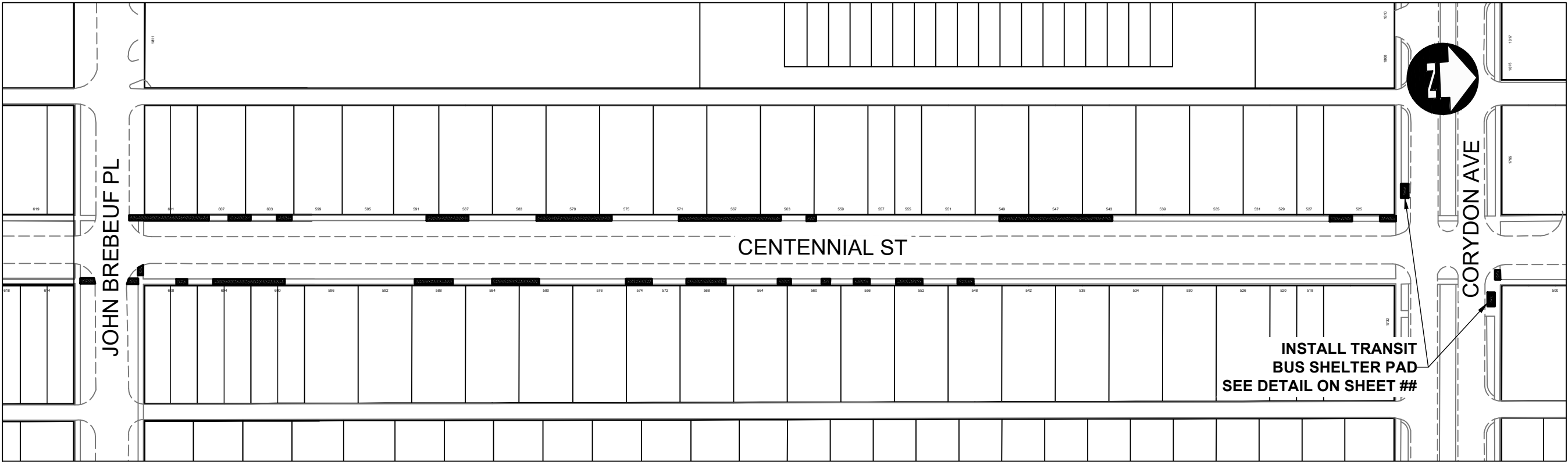
LINDSAY ST FROM KINGSWAY TO ACADEMY RD  
SCALE = 1:1000



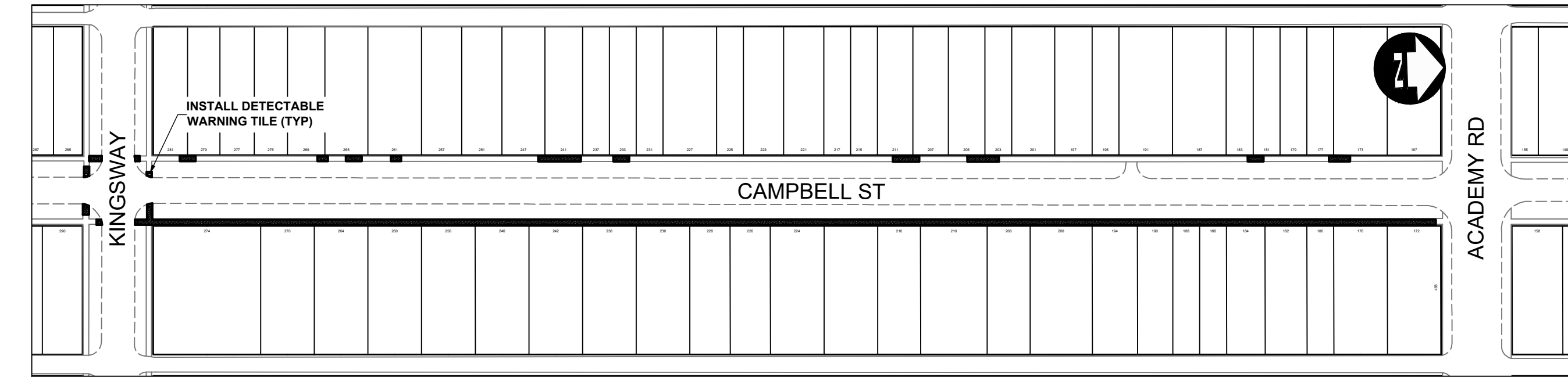
BRANDON AVE FROM OSBORNE ST TO HAY ST  
SCALE = 1:1000



SCOTLAND AVE FROM GUELPH ST TO HARROW ST  
SCALE = 1:750



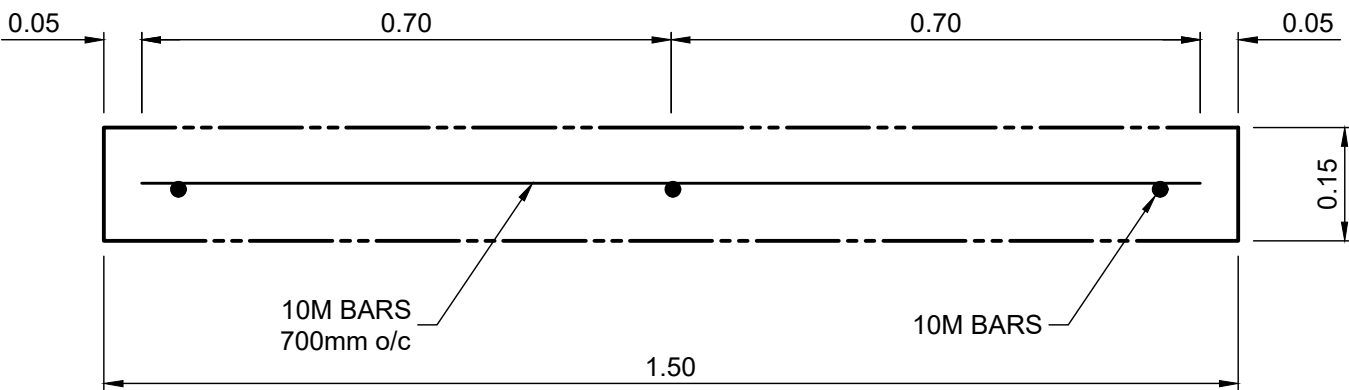
CENTENNIAL ST FROM JOHN BREBEUF PL TO CORYDON AVE  
SCALE = 1:1250



CAMPBELL ST FROM KINGSWAY TO ACADEMY RD  
SCALE = 1:1250

CONSTRUCTION NOTES:

- ALL WORK AND MATERIALS TO BE IN ACCORDANCE WITH LATEST REVISION OF THE CITY OF WINNIPEG STANDARD CONSTRUCTION SPECIFICATIONS.
- LEGAL PLAN AND UNDERGROUND INFORMATION FROM CITY OF WINNIPEG L.B.S. CONTRACTOR TO VERIFY ALL UNDERGROUNDS IN THE FIELD.
- CONTRACTOR TO TAKE PRECAUTIONARY STEPS TO AVOID DAMAGE FROM CONSTRUCTION ACTIVITIES TO TREES WITHIN THE LIMITS OF CONSTRUCTION AS OUTLINED IN THE SPECIFICATIONS.
- LOCATION OF EXISTING SERVICES TO BE CONFIRMED IN THE FIELD BY THE CONTRACTOR.
- ALL DIMENSIONS ARE TO BACK OF CURB.
- LIMITS OF CURB AND SIDEWALK RECONSTRUCTION TO BE FINALIZED IN THE FIELD BY THE CONTRACT ADMINISTRATOR.
- ADJUST ALL WATER VALVES, MANHOLES, CATCH BASINS, CATCH PITS AND WATER SHUT OFF VALVES TO GRADE.
- ALL PRIVATE WALKWAYS TO BE ADJUSTED TO NEW SIDEWALK OR TOP OF CURB ELEVATION, AS REQUIRED.
- STREET LIGHT STANDARDS, HYDRO POLES AND ANCHORS THAT REQUIRE TEMPORARY SUPPORT, REMOVAL OR REPLACEMENT, ARE TO BE DONE AT THE EXPENSE OF THE CONTRACTOR, AS NECESSARY.
- FOR ROAD RECONSTRUCTIONS, ALL WATER MAIN SERVICES NEED TO BE INSULATED UNLESS NOTED OTHERWISE. ADDITIONALLY, ALL CATCH BASINS, MANHOLES AND LEAD PIPES LOCATED WITHIN 2.0 m OF A RESIDENTIAL SERVICE MUST BE INSULATED TO PROTECT THE SERVICE FROM POTENTIAL FUTURE FREEZING.
- CONSTRUCT MODIFIED BARRIER CURB (SD-203B) AT ALL INTERSECTION RADII AND ALLEY RADII.
- CONTRACTOR TO OVERLAY DRIVEWAYS TO ENSURE POSITIVE DRAINAGE TO NEW STREET GRADES. FINAL LIMITS TO BE DETERMINED IN THE FIELD BY CONTRACT ADMINISTRATOR.
- REFER TO TENDER FOR DETAILS REGARDING TRAFFIC MANAGEMENT.



A TYPE 5 CONCRETE 150mm REINFORCED SIDEWALK  
SCALE: H=1:10

METRIC

WHOLE NUMBERS INDICATE MILLIMETRES  
DECIMALIZED NUMBERS INDICATE METRES

SIDEWALK RENEWAL

	HYDRANT			WATERMAIN			CONCRETE ROAD	
	VALVE			LAND DRAINAGE SEWER			ASPHALT ROAD	
	CURB STOP			WASTE WATER SEWER			CONC ROAD W/ASP OVERLAY	
	LIGHT STANDARD			HYDRO			CONCRETE SIDEWALK	
	HYDRO POLE			BELLMTS			ASPHALT PATH	
	TREE			GAS			PAVEMENT REPAIR FABRIC	
	GEODETIC BENCH MARK			TRAFFIC SIGNALS			GRASS/SOD	
	SURVEY BAR			STREET LIGHTS			ELEVATION	
	MANHOLE			TRAFFIC SIGNAL POLE			PROPERTY LINE	
	CATCH BASIN			PAVING STONE			CURB RAMP	
	CATCH PIT			CURB RENEWAL			DETECTABLE TILE	
	EXISTING			EXISTING			EXISTING	
	LEGEND-PLAN			LEGEND-PLAN			LEGEND-PLAN	

UNDERGROUND STRUCTURES

SUPPLY: U/G STRUCTURES DATE

LOCATION OF UNDERGROUND STRUCTURES AS SHOWN ARE BASED ON THE BEST INFORMATION AVAILABLE. BUT NO GUARANTEE IS GIVEN THAT ALL EXISTING UTILITIES ARE SHOWN OR THAT THE GIVEN LOCATIONS ARE EXACT. CONFIRMATION OF EXISTENCE AND EXACT LOCATION OF ALL SERVICES MUST BE OBTAINED FROM THE INDIVIDUAL UTILITIES BEFORE PROCEEDING WITH CONSTRUCTION.

B.M. ELEV.

NO.

REVISIONS

DESIGNED BY

DRC

DRAWN BY

DRC

CHECKED BY

LAS

APPROVED BY

DBW

HOR. SCALE

VARIES

VERTICAL

-

RELEASED FOR CONSTRUCTION  
DATE

ENGINEER'S SEAL

CONSULTANT PROJECT NUMBER

25-2151



THE CITY OF WINNIPEG  
PUBLIC WORKS DEPARTMENT

2026 LOCAL STREET RENEWALS PROGRAM

SIDEWALK RENEWALS  
VARIOUS LOCAL STREETS

CITY DRAWING NUMBER

SHEET 36 OF 55

TENDER NUMBER

136-2026

ENGINEERS  
GEOSCIENTISTS  
MANITOBA  
Certificate of Authorization  
Dillon Consulting Limited (MB)  
No. 1789 Date: 2026/03/27