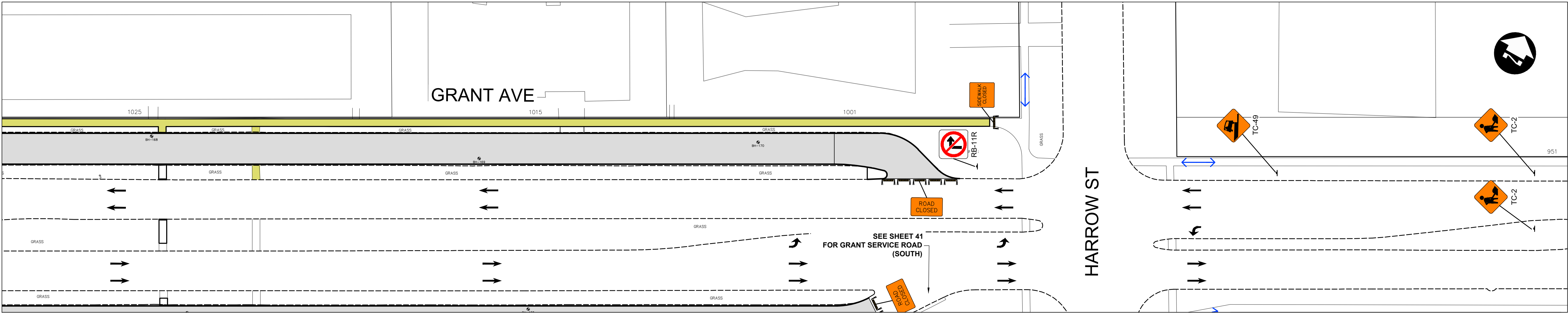
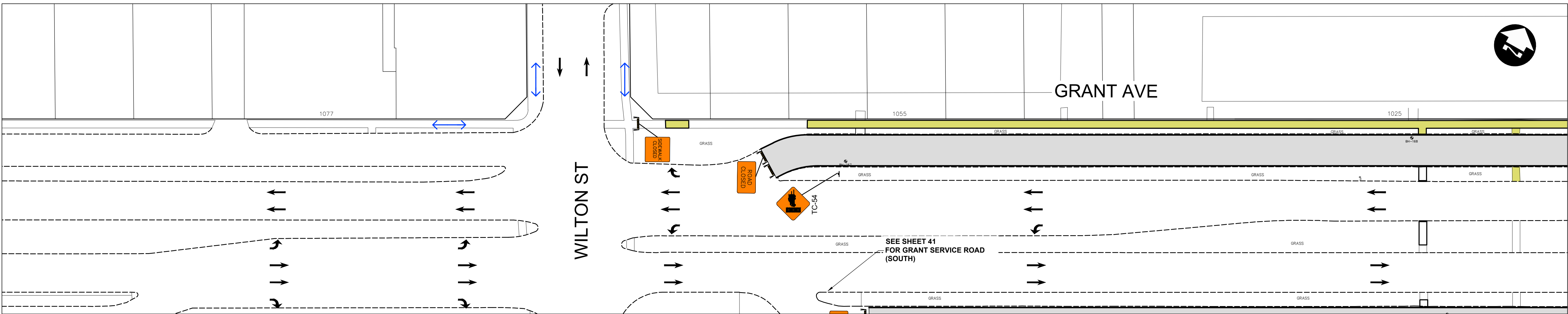


C:\pwworking\directory\projects\2025\dillon_401h\cims96539\250151-CT-COM-STAGING.dwg






METRIC

WHOLE NUMBERS INDICATE MILLIMETRES
DECIMALIZED NUMBERS INDICATE METRES

LEGEND - STAGING			
	PERMANENT ROADWAY CONSTRUCTION		REFLECTORIZED LIGHT BARRICADE (TC-64A)
	PERMANENT SIDEWALK/MUP CONSTRUCTION		PEDESTRIAN CHANNELIZATION DEVICE
	TALL CONE		VEHICULAR TRAFFIC
	CHANNELIZATION BARREL (TC-63)		PEDESTRIAN/CYCLIST TRAFFIC

NOTES:

- ALL TRAFFIC SIGNAGE AND TEMPORARY TRAFFIC CONTROL TO CONFORM WITH THE LATEST REVISION OF THE CITY OF WINNIPEG MANUAL OF TEMPORARY TRAFFIC CONTROL (MTTC) ON CITY STREETS.
- CONTRACTOR SHALL MAINTAIN SAFE PEDESTRIAN ACCESS AND CROSSINGS WHERE SIDEWALKS ARE LOCATED ON BOTH SIDES OF THE STREET. CONTRACTOR MUST MAINTAIN PEDESTRIAN ACCESS ON ONE SIDE AT ALL TIMES.
- WHERE APPLICABLE, CONSTRUCTION IS TO BE COMPLETED LANE AT A TIME. WHEN CONSTRUCTION IS COMPLETE IN THE FIRST LANE, TRAFFIC WILL BE MOVED TO THE COMPLETED LANE AND TRAFFIC CONTROL MIRRORED.
- PARKING TO BE REMOVED AT TIME OF CONSTRUCTION.
- RESIDENTIAL APPROACH ACCESS MUST BE MAINTAINED AT ALL TIMES.
- BARRICADES SHALL BE PLACED AT EACH PRIVATE APPROACH WHEN NECESSARY.
- BARRICADES AND POLY POSTS SHALL BE PLACED AT REQUIRED SPACING AS PER MTTC.
- ADVANCED SIDEWALK CLOSURE SIGNS TO BE PLACED AS PER MTTC.
- SINGLE LANE CLOSURES ON WESTBOUND GRANT AVENUE WILL BE PERMITTED DURING NON-PEAK HOURS, UNLESS OTHERWISE APPROVED BY THE CONTRACT ADMINISTRATOR.
- ALL SIDEWALK CLOSED BARRICADES SHALL BE INSTALLED WITH A BOTTOM BARRIER IN ACCORDANCE WITH THE MTTC.

UNDERGROUND STRUCTURES		B.M. ELEV.		DESIGNED BY DRC						<div><div>THE CITY OF WINNIPEG</div><div>PUBLIC WORKS DEPARTMENT</div></div>							
SUPV. U/G STRUCTURES				DRAWN BY DRC													
DATE				CHECKED BY LAS													
				APPROVED BY DBW													
LOCATION OF UNDERGROUND STRUCTURES AS SHOWN ARE BASED ON THE BEST INFORMATION AVAILABLE BUT NO GUARANTEE IS GIVEN THAT ALL EXISTING UTILITIES ARE SHOWN OR THAT THE GIVEN LOCATIONS ARE EXACT. CONFIRMATION OF EXISTENCE AND EXACT LOCATION OF ALL SERVICES MUST BE OBTAINED FROM THE INDIVIDUAL UTILITIES BEFORE PROCEEDING WITH CONSTRUCTION.				HOR. SCALE 1:400		RELEASED FOR CONSTRUCTION		CONSULTANT PROJECT NUMBER 25-2151		2026 LOCAL STREET RENEWALS PROGRAM TRAFFIC STAGING GRANT SERVICE ROAD (NORTH)				CITY DRAWING NUMBER			
														SHEET 40 OF 55			
																TENDER NUMBER	
																136-2026	
		0 ISSUED FOR TENDER		26/03/27		LAS											
		NO. REVISIONS		DATE		BY		DATE									