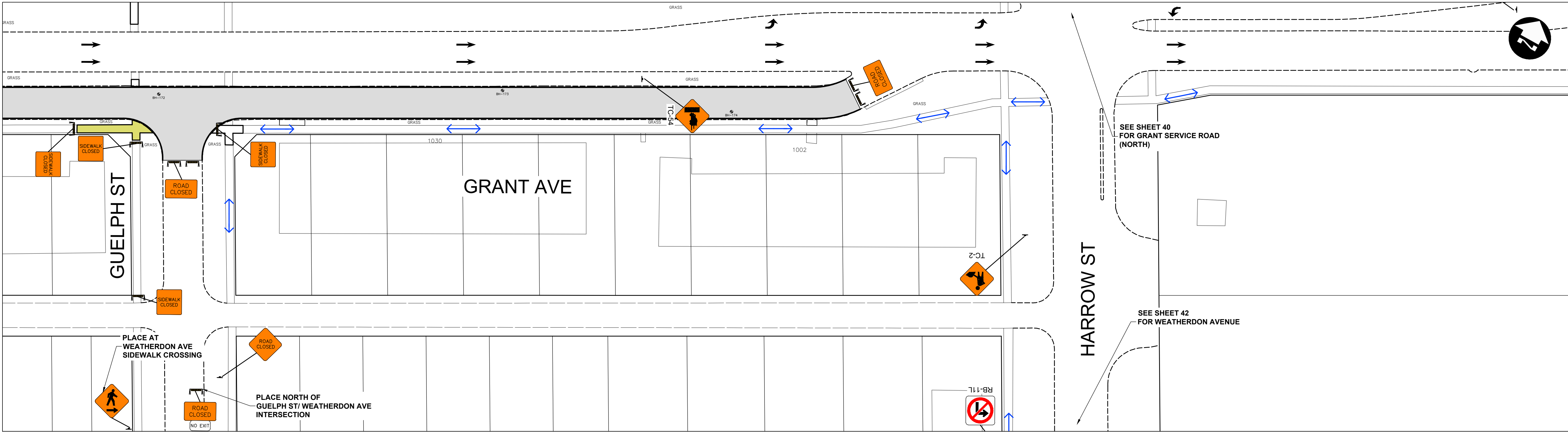
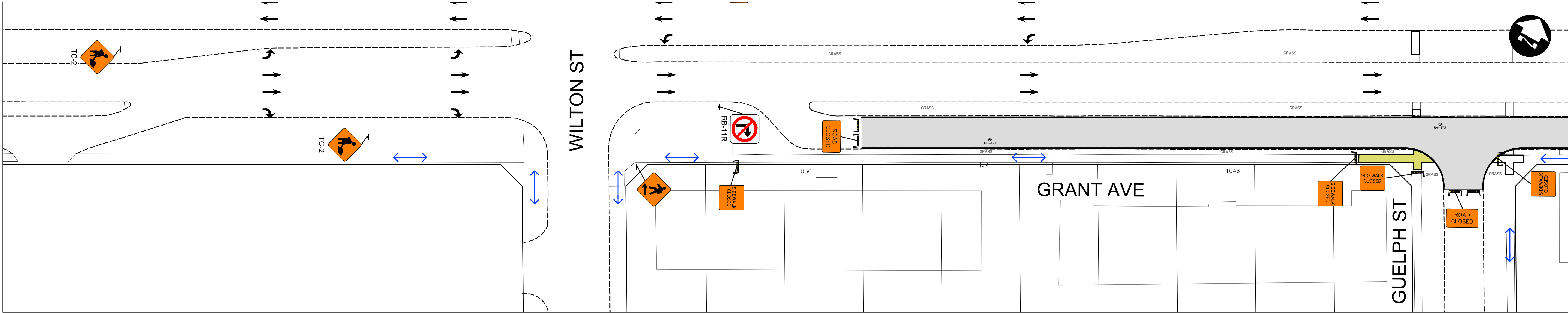


C:\pwworking\directory\projects\2025\dillon_401h\cims96539\252151-CT-CON-STAGING.dwg





- NOTES:**
1. ALL TRAFFIC SIGNAGE AND TEMPORARY TRAFFIC CONTROL TO CONFORM WITH THE LATEST REVISION OF THE CITY OF WINNIPEG MANUAL OF TEMPORARY TRAFFIC CONTROL (MTTC) ON CITY STREETS.
 2. CONTRACTOR SHALL MAINTAIN SAFE PEDESTRIAN ACCESS AND CROSSINGS. WHERE SIDEWALKS ARE LOCATED ON BOTH SIDES OF THE STREET, CONTRACTOR MUST MAINTAIN PEDESTRIAN ACCESS ON ONE SIDE AT ALL TIMES.
 3. WHERE APPLICABLE, CONSTRUCTION IS TO BE COMPLETED LANE AT A TIME. WHEN CONSTRUCTION IS COMPLETE IN THE FIRST LANE, TRAFFIC WILL BE MOVED TO THE COMPLETED LANE AND TRAFFIC CONTROL MIRRORRED.
 4. PARKING TO BE REMOVED AT TIME OF CONSTRUCTION.
 5. RESIDENTIAL APPROACH ACCESS MUST BE MAINTAINED AT ALL TIMES.
 6. BARRICADES SHALL BE PLACED AT EACH PRIVATE APPROACH WHEN NECESSARY.
 7. BARRICADES AND POLY POSTS SHALL BE PLACED AT REQUIRED SPACING AS PER MTTC.
 8. ADVANCED SIDEWALK CLOSURE SIGNS TO BE PLACED AS PER MTTC.
 9. SINGLE LANE CLOSURES ON EASTBOUND GRANT AVENUE WILL BE PERMITTED DURING NON-PEAK HOURS, UNLESS OTHERWISE APPROVED BY THE CONTRACT ADMINISTRATOR.
 10. ALL SIDEWALK CLOSED BARRICADES SHALL BE INSTALLED WITH A BOTTOM BARRIER IN ACCORDANCE WITH THE MTTC.

METRIC

WHOLE NUMBERS INDICATE MILLIMETRES
DECIMALIZED NUMBERS INDICATE METRES

LEGEND - STAGING

	PERMANENT ROADWAY CONSTRUCTION		REFLECTORIZED LIGHT BARRICADE (TC-64A)
	PERMANENT SIDEWALK/MUP CONSTRUCTION		PEDESTRIAN CHANNELIZATION DEVICE
	TALL CONE		VEHICULAR TRAFFIC
	CHANNELIZATION BARREL (TC-63)		PEDESTRIAN/CYCLIST TRAFFIC

UNDERGROUND STRUCTURES		B.M. ELEV.		DESIGNED BY DRC			ENGINEER'S SEAL	 THE CITY OF WINNIPEG PUBLIC WORKS DEPARTMENT		CITY DRAWING NUMBER	
SUPV. U/G STRUCTURES				DRAWN BY DRC						SHEET 41 OF 55	
DATE				CHECKED BY LAS				TENDER NUMBER			
				APPROVED BY DBW				2026 LOCAL STREET RENEWALS PROGRAM			
				HOR. SCALE 1:400				TRAFFIC STAGING			
LOCATION OF UNDERGROUND STRUCTURES AS SHOWN ARE BASED ON THE BEST INFORMATION AVAILABLE, BUT NO GUARANTEE IS GIVEN THAT ALL EXISTING UTILITIES ARE SHOWN OR THAT THE GIVEN LOCATIONS ARE EXACT. CONFIRMATION OF EXISTENCE AND EXACT LOCATION OF ALL SERVICES MUST BE OBTAINED FROM THE INDIVIDUAL UTILITIES BEFORE PROCEEDING WITH CONSTRUCTION.						RELEASED FOR CONSTRUCTION		GRANT SERVICE ROAD (SOUTH)		136-2026	
0 ISSUED FOR TENDER		26/03/27		LAS		VERTICAL —		CONSULTANT PROJECT NUMBER			
NO. REVISIONS		DATE		BY		DATE		25-2151			