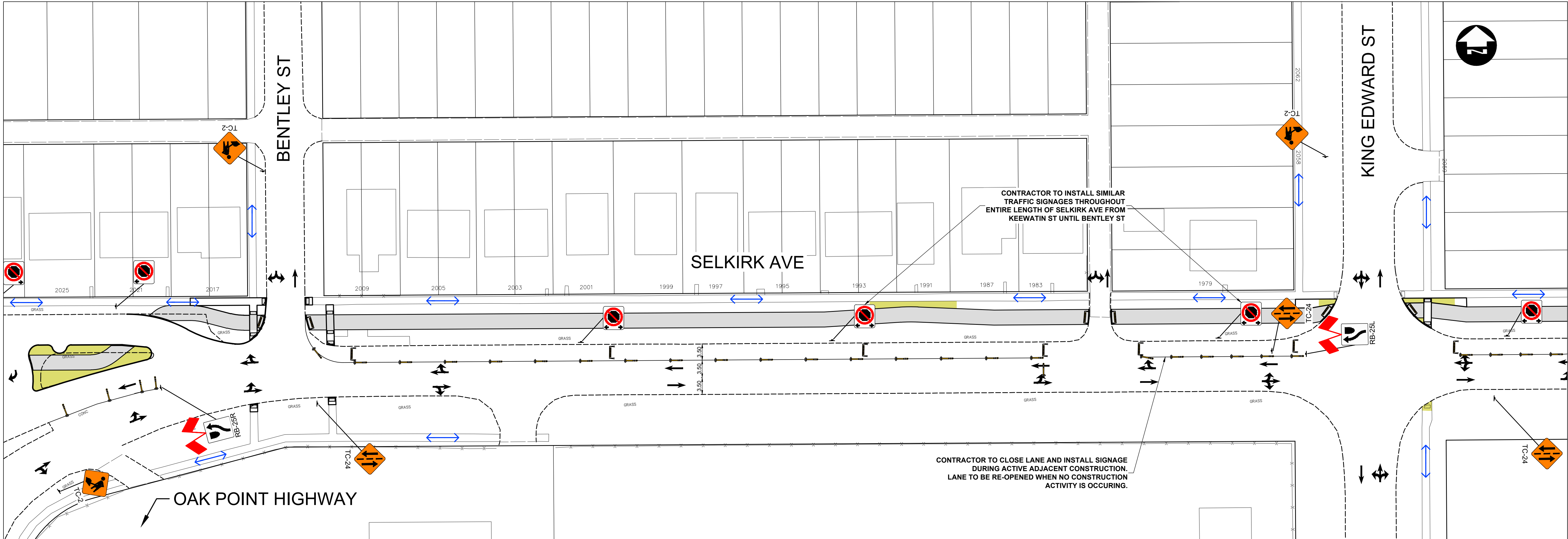


C:\pwworking\directory\projects\2025\dillon_401h\rms56539\250151-CT-CON-STAGING.dwg



METRIC


WHOLE NUMBERS INDICATE MILLIMETRES
DECIMALIZED NUMBERS INDICATE METRES


NOTES:


- ALL TRAFFIC SIGNAGE AND TEMPORARY TRAFFIC CONTROL TO CONFORM WITH THE LATEST REVISION OF THE CITY OF WINNIPEG MANUAL OF TEMPORARY TRAFFIC CONTROL (MTTC) ON CITY STREETS.
- CONTRACTOR SHALL MAINTAIN SAFE PEDESTRIAN ACCESS AND CROSSINGS. WHERE SIDEWALKS ARE LOCATED ON BOTH SIDES OF THE STREET, CONTRACTOR MUST MAINTAIN PEDESTRIAN ACCESS ON ONE SIDE AT ALL TIMES.
- WHERE APPLICABLE, CONSTRUCTION IS TO BE COMPLETED LANE AT A TIME. WHEN CONSTRUCTION IS COMPLETE IN THE FIRST LANE, TRAFFIC WILL BE MOVED TO THE COMPLETED LANE AND TRAFFIC CONTROL MIRRORED.
- PARKING TO BE REMOVED AT TIME OF CONSTRUCTION.
- RESIDENTIAL APPROACH ACCESS MUST BE MAINTAINED AT ALL TIMES.
- BARRICADES SHALL BE PLACED AT EACH PRIVATE APPROACH WHEN NECESSARY.
- BARRICADES AND POLY POSTS SHALL BE PLACED AT REQUIRED SPACING AS PER MTTC.
- ADVANCED SIDEWALK CLOSURE SIGNS TO BE PLACED AS PER MTTC.
- ALL SIDEWALK CLOSED BARRICADES SHALL BE INSTALLED WITH A BOTTOM BARRIER IN ACCORDANCE WITH THE MTTC.


**ENGINEERS
GEOSCIENTISTS
MANITOBA**


Certificate of Authorization
Dillon Consulting Limited (MB)
No. 1789 Date: 2026/03/27


 PERMANENT ROADWAY CONSTRUCTION


 PERMANENT SIDEWALK/MUP CONSTRUCTION


 TALL CONE

 CHANNELIZATION BARREL (TC-63)


 REFLECTORIZED LIGHT BARRICADE (TC-64A)

 PEDESTRIAN CHANNELIZATION DEVICE

 VEHICULAR TRAFFIC

 PEDESTRIAN/CYCLIST TRAFFIC

LEGEND - STAGING

UNDERGROUND STRUCTURES		B.M. ELEV.		DESIGNED BY DRC		 DILLON CONSULTING		ENGINEER'S SEAL							
SUPPLY: U/G STRUCTURES DATE				DRAWN BY DRC				2026 LOCAL STREET RENEWALS PROGRAM		CITY DRAWING NUMBER					
				CHECKED BY LAS						SHEET 48 OF 55					
				APPROVED BY DBW						TENDER NUMBER					
LOCATION OF UNDERGROUND STRUCTURES AS SHOWN ARE BASED ON THE BEST INFORMATION AVAILABLE, BUT NO GUARANTEE IS GIVEN THAT ALL EXISTING UTILITIES ARE SHOWN OR THAT THE GIVEN LOCATIONS ARE EXACT. CONFIRMATION OF EXISTENCE AND EXACT LOCATION OF ALL SERVICES MUST BE OBTAINED FROM THE INDIVIDUAL UTILITIES BEFORE PROCEEDING WITH CONSTRUCTION.		0 ISSUED FOR TENDER		26/03/27		LAS		HOR. SCALE 1:400		CONSULTANT PROJECT NUMBER 25-2151		TRAFFIC STAGING SELKIRK AT PATHWAY (1 OF 2)		136-2026	
NO. REVISIONS		DATE		BY		DATE		RELEASED FOR CONSTRUCTION		DATE					