

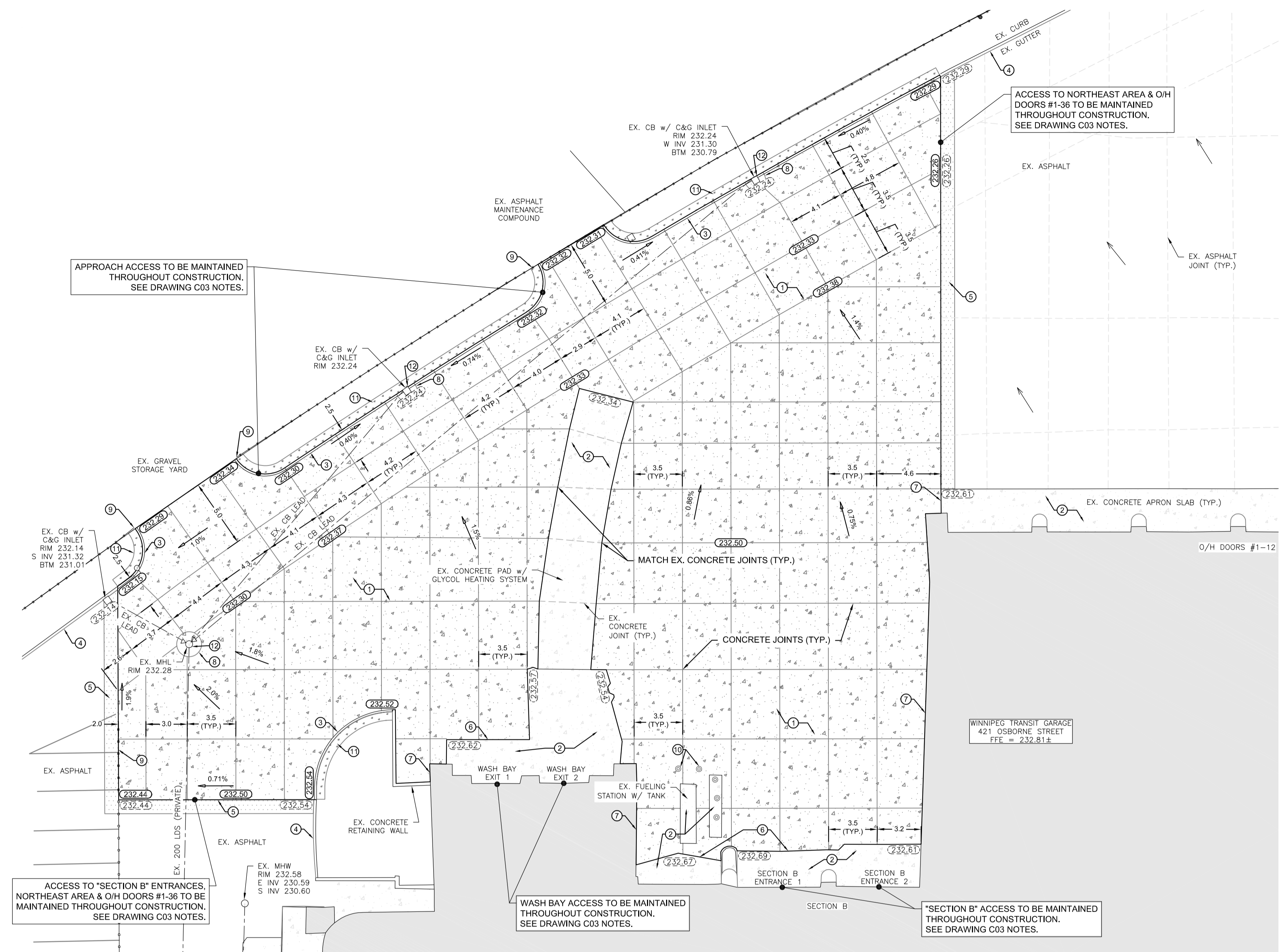
KEY PLAN
SCALE 1:2000

- KEY NOTES:**
- 1 REMOVE EXISTING PAVEMENT AS PER CW 3110 & CONSTRUCT NEW CONCRETE PAVEMENT AS PER CW 3310
 - 2 EXISTING CONCRETE TO REMAIN
 - 3 REMOVE EXISTING CONCRETE CURB & CONSTRUCT NEW BARRIER CURB AS PER CW 3310 AND SD-204
 - 4 EXISTING CONCRETE CURB TO REMAIN
 - 5 ASPHALT TIE-INS AND PATCHING TO MATCH NEW SLAB ELEVATIONS, AS PER CW 3410.
 - 6 CONNECT TO EXISTING CONCRETE SLAB AND MATCH EXISTING ELEVATIONS, AS PER SD-213B. SEE TYPICAL CONNECTION DETAIL.
 - 7 INSTALL EXPANSION JOINT BETWEEN SLAB AND EXISTING BUILDING FOUNDATION. SEE TYPICAL DETAIL.
 - 8 CATCH BASIN OR MANHOLE ISOLATION AS PER SD-220A/C
 - 9 PROTECT EXISTING FENCE
 - 10 EXISTING BOLLARDS TO REMAIN
 - 11 TOPSOIL & SOD
 - 12 ADJUST EXISTING MANHOLE FRAME, CATCH BASIN FRAME, GATE VALVE OR CURB STOP TO FINISHED GRADE AS REQUIRED, AS PER CW 3210

SEE DRAWING C03 FOR CONSTRUCTION STAGING PLAN AND TRAFFIC MANAGEMENT PLAN REQUIREMENTS.

- GENERAL NOTES:**
1. ALL CONSTRUCTION AND MATERIALS INCORPORATED IN THE WORK SHALL CONFORM TO THE LATEST EDITION OF THE CITY OF WINNIPEG "STANDARD DESIGN AND CONSTRUCTION SPECIFICATIONS", UNLESS NOTED OTHERWISE.
 2. LOCATIONS OF UNDERGROUND STRUCTURES AS SHOWN ARE BASED ON THE BEST INFORMATION AVAILABLE, BUT NO GUARANTEE IS GIVEN THAT ALL EXISTING UTILITIES ARE SHOWN OR THAT THE GIVEN LOCATIONS ARE EXACT. CONFIRMATION OF EXISTENCE, EXACT LOCATION AND DEPTH OF ALL SERVICES MUST BE OBTAINED FROM THE INDIVIDUAL UTILITIES BEFORE PROCEEDING WITH CONSTRUCTION.
 3. LOCATIONS OF PROPERTY LIMITS AND EXISTING AND/OR PROPOSED FEATURES RELATIVE TO THESE LIMITS AS SHOWN DO NOT REPRESENT A LEGAL SURVEY. SBC INC. MAKES NO REPRESENTATION OR GUARANTEE THAT THE PROPERTY LIMIT INFORMATION SHOWN IS ACCURATE, AND ACCEPTS NO RESPONSIBILITY FOR ANY DAMAGES SUFFERED BY ANY THIRD PARTY AS A RESULT OF DECISIONS OR ACTIONS BASED ON THIS DRAWING.
 4. ALL SURFACES AND ANY EXISTING UTILITIES DAMAGED OR DISTURBED BY CONSTRUCTION SHALL BE RESTORED TO ITS ORIGINAL CONDITION OR BETTER, OR REPLACED, AT THE CONTRACTOR'S EXPENSE.

METRIC
WHOLE NUMBERS INDICATE MILLIMETERS,
DECIMAL NUMBERS INDICATE METERS.

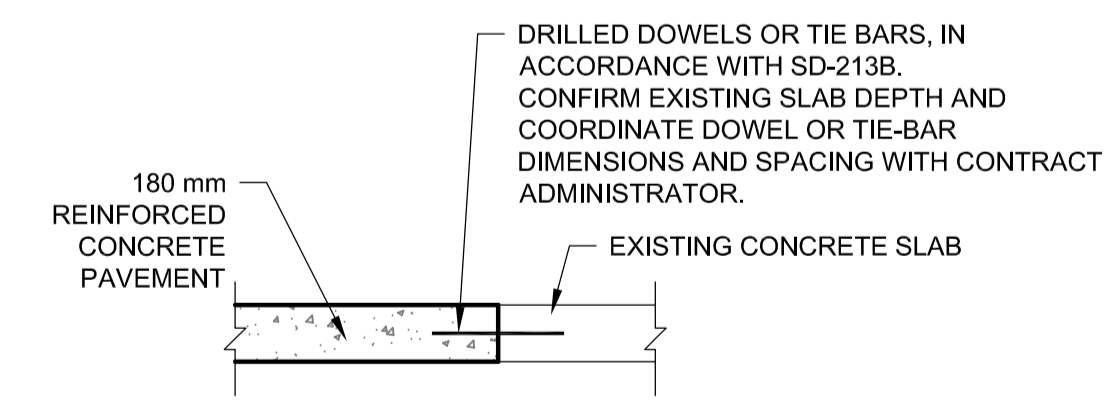


SITE GRADING PLAN
1:200

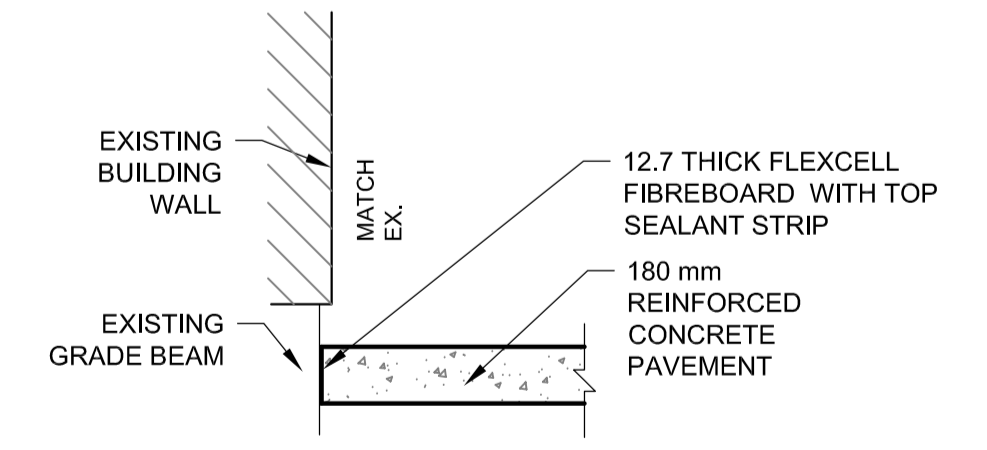
	SPECIFICATION REFERENCE	REQUIRED THICKNESS
REINFORCED CONCRETE PAVEMENT (TYPE 1)	CW 3310	180 mm
GRANULAR A LESTONE BASE COURSE	CW 3110	150 mm
50 mm GRANULAR A LESTONE SUB-BASE	CW 3110	550 mm
CLASS B GEOGRID	CW 3135	N/A
SEPARATION/FILTRATION GEOTEXTILE FABRIC	CW 3130	N/A
COMPACTED SUITABLE SUB-GRADE	CW 3110	N/A

NOTES:
1. PAVEMENT STRUCTURE DEPTHS AS SHOWN ARE BASED ON GEOTECHNICAL INVESTIGATION RECOMMENDATIONS, PREPARED BY SBU ENGINEERING, FOR SUB-GRADES WITH CBR ≥ 3.0.
2. TYPE 3/4 EARLY OPENING CONCRETE MAY BE USED AS NEEDED TO MEET CONSTRUCTION STAGING PLAN REQUIREMENTS.

CONCRETE PAVEMENT STRUCTURE
N.T.S.



EXISTING CONCRETE SLAB
TYPICAL CONNECTION DETAIL
N.T.S.



EXISTING BUILDING FOUNDATION
TYPICAL EXPANSION JOINT DETAIL
N.T.S.

150 WWS	WATERMAIN	150 WWS	HYDRO	
250 WWS	WASTEWATER	150 WWS	GAS	
300 LDS	LAND DRAINAGE SEWER	300 LDS	COMMUNICATIONS	
⊙	HYDRANT ASSEMBLY	⊙	TREE LINE	
⊕	GATE VALVE	⊕	CULVERT	=====
⊖	CURB STOP	⊖	SWALE	>>>>
⊗	REDUCER	⊗	DIRECTION OF FLOW	→
⊘	MANHOLE	⊘	SURVEY ELEVATION	+235.380
⊙	CATCH BASIN	⊙	PAVEMENT ELEVATION	(235.400)
⊕	TESTHOLE	⊕	GROUND ELEVATION	235.38
⊗	SURVEY BAR	⊗	DITCH ELEVATION	(235.38)
⊕	SIGN	⊕	CHAIN LINK FENCE	* * *
⊕	UTILITY POLE	⊕	WOOD FENCE	□ □ □
⊕	UTILITY PEDESTAL	⊕		
EXISTING	LEGEND	EXISTING	LEGEND	

THIS DRAWING AND DESIGN IS THE PROPERTY OF SISON BLACKBURN CONSULTING INC. AND REPRODUCTION OR USE FOR ANY OTHER PURPOSE OTHER THAN AUTHORIZED BY SBC INC. IS FORBIDDEN.

SBC
Sison Blackburn Consulting Inc.
60 South Landing Drive, Unit 1
Oak Bluff MB, R4G 0C4
T: (204) 505-0855 | F: (204) 505-0850
www.sbcinc.ca

ISS	REV	DATE	DESCRIPTION
0	0	25/05/04	ISSUED FOR TENDER

CLIENT / PROJECT:
Winnipeg
WINNIPEG TRANSIT FORT ROUGE GARAGE 2026 MAJOR PAVEMENT RECONSTRUCTION

TITLE:
SITE GRADING PLAN

DISCIPLINE: CIVIL	ISSUE: ISSUED FOR TENDER
SCALE: AS SHOWN	PROJECT START DATE: MAY, 2025
DRAWN: MM	DESIGNED: MM/RC
CHECKED: JT/RC	PROJECT #: 25118-00
	DRAWING #: C02
	REVISION: 0
	SHT: 2 OF 3