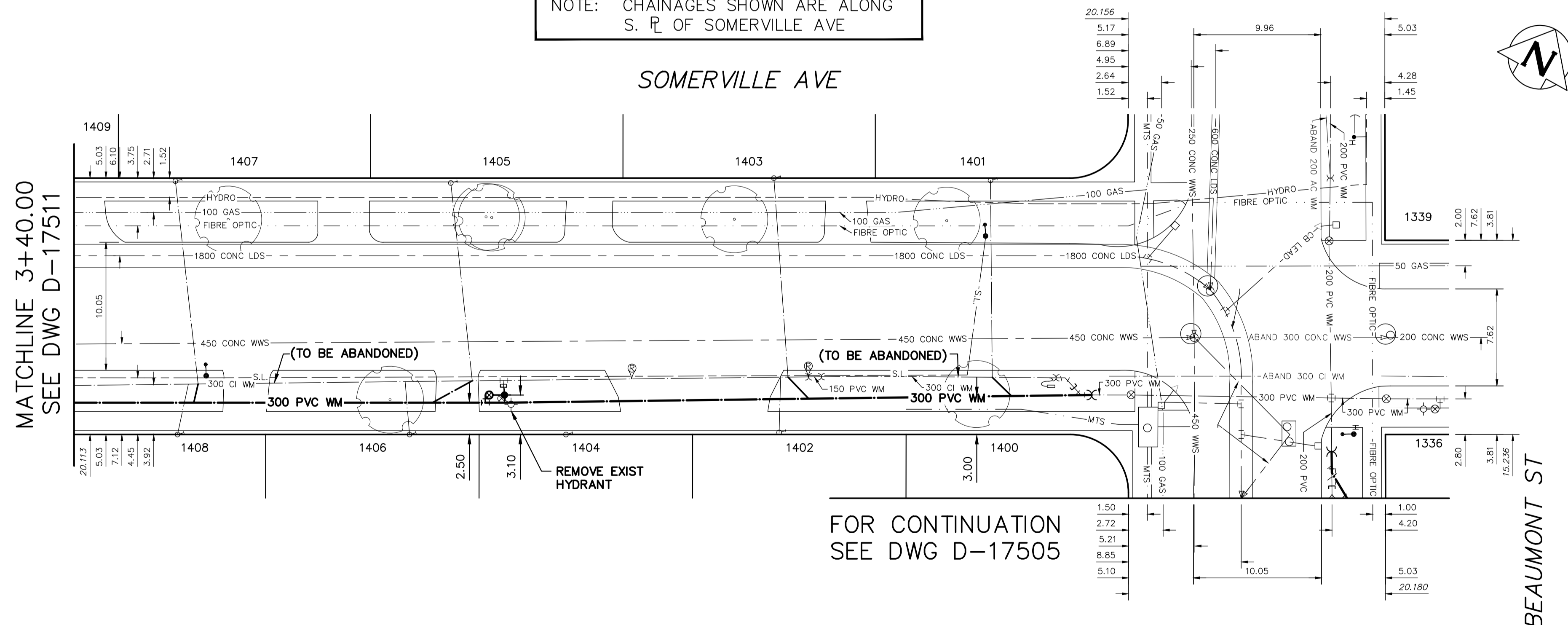


**WATER SERVICE INFORMATION**

ADDRESS	SIZE (mm)	SIZE (mm)	SHORT & LONG MEASUREMENT	CORP LOCATION	REMARKS
1336 SOMERVILLE AVE RESIDENTIAL	20	12	3.32 SNL HSE 8.550 SSL SOMERVILLE ST	OPP. OF S/C	OUTSIDE SCOPE OF WORK SERVICE OFF BEAUMONT ST
1400 SOMERVILLE AVE RESIDENTIAL	-	20	5.28 SNL HSE 10.830 SSL SOMERVILLE ST	-	SERVICE OFF BEAUMONT ST
1401 SOMERVILLE AVE RESIDENTIAL	-	-	5.81 EWL HSE 10.830 WWL BEAUMONT ST	0.1 E OF S/C	RECONNECT SERVICE
1402 SOMERVILLE AVE RESIDENTIAL	-	20	3.34 EWL HSE 27.420 WWL BEAUMONT ST	0.1 E OF S/C	RECONNECT SERVICE
1403 SOMERVILLE AVE RESIDENTIAL	-	-	3.26 WEL HSE 27.830 WWL BEAUMONT ST	1.1 E OF S/C	RECONNECT SERVICE
1404 SOMERVILLE AVE RESIDENTIAL	-	-	8.45 WEL HSE 44.150 WWL BEAUMONT ST	-	RECONNECT SERVICE
1405 SOMERVILLE AVE RESIDENTIAL	20	-	4.42 EWL HSE 53.190 WWL BEAUMONT ST	1.7 E OF S/C	RECONNECT SERVICE
1406 SOMERVILLE AVE RESIDENTIAL	20	-	2.38 WEL HSE 56.430 WWL BEAUMONT ST	0.3 W OF S/C	RECONNECT SERVICE
1407 SOMERVILLE AVE RESIDENTIAL	20	20	2.94 EWL HSE 74.810 WWL BEAUMONT ST	1.8 E OF S/C	RECONNECT SERVICE
1408 SOMERVILLE AVE RESIDENTIAL	20	-	3.80 WEL HSE 74.650 WWL BEAUMONT ST	0.9 E OF S/C	RECONNECT SERVICE

\* SERVICES TO BE RENEWED TO R. ALL OTHERS TO BE RECONNECTED

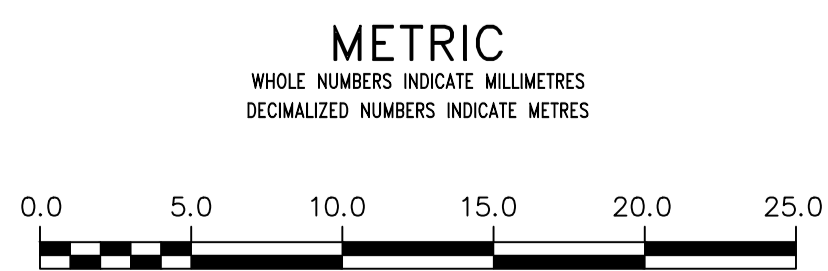
NOTE: CHAINAGES SHOWN ARE ALONG S. R. OF SOMERVILLE AVE



FOR CONTINUATION SEE DWG D-17505

FOR INDEX SEE D-17504

NOTE: ALL VALVES TO BE INSTALLED CLOCKWISE TO CLOSE



**WARNING**  
IF POWER EQUIPMENT OR EXPLOSIVES ARE TO BE USED FOR EXCAVATION ON THIS PROJECT THE CONTRACTOR MUST:  
1) NOTIFY THE GAS COMPANY OF THE PROPOSED LOCATION OF EXCAVATION.  
2) TAKE PRECAUTION TO AVOID DAMAGE TO GAS COMPANY INSTALLATIONS.  
SEE PROVINCIAL REGULATION 210/72 FOR DETAILS

**LOCATION APPROVED UNDERGROUND STRUCTURES**  
SUPV. U/G STRUCTURES COMMITTEE DATE  
NOTE: LOCATION OF UNDERGROUND STRUCTURES AS SHOWN ARE BASED ON THE BEST INFORMATION AVAILABLE BUT NO GUARANTEE IS GIVEN THAT ALL EXISTING UTILITIES ARE SHOWN OR THAT THE GIVEN LOCATIONS ARE EXACT. CONFIRMATION OF EXISTENCE AND EXACT LOCATION OF ALL SERVICES MUST BE OBTAINED FROM THE INDIVIDUAL UTILITIES BEFORE PROCEEDING WITH CONSTRUCTION.

VERTICAL DATUM: CGVD28 (HT2.0 Geoid)	
HORIZONTAL DATUM: NAD83 (June 1990), Zone 14	
DESIGNED BY	MA
CHECKED BY	MA
DRAWN BY	JD
APPROVED BY	SC
SCALE:	
HORIZONTAL	1:250
VERTICAL	1:50
ISSUED FOR TENDER	2026/04/21
NO.	REVISIONS
DATE	BY
2026 04 20	

ENGINEER'S SEAL	
CONSULTANT DRAWING NUMBER	

ENGINEER'S SEAL  
CONSULTANT DRAWING NUMBER

**THE CITY OF WINNIPEG**  
WATER AND WASTE DEPARTMENT  
ENGINEERING DIVISION

2026 WATER MAIN RENEWALS  
CONTRACT 3  
SOMERVILLE AVENUE  
240 E PLANET STREET TO  
BEAUMONT STREET

SHEET 10 OF 11  
CITY DRAWING NUMBER  
D-17512