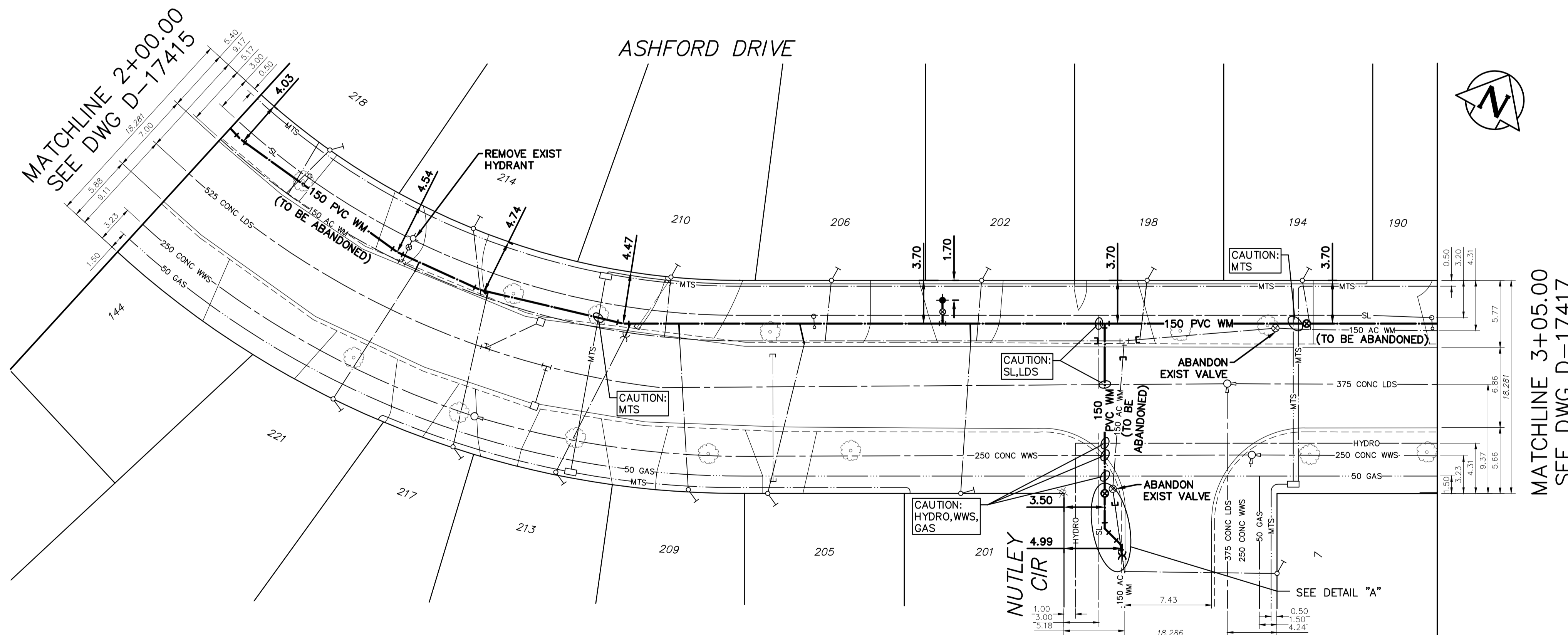


DETAIL "A"
SCALE: NTS



WATER SERVICE INFORMATION					
ADDRESS	SIZE (mm) MATERIAL (STREET)	SIZE (mm) MATERIAL (PROP.)	SHORT & LONG MEASUREMENT	CORP LOCATION	REMARK
7 NUTLEY CIR RESIDENTIAL	20 PE	20 CU	2.92 LR 6.90 SSL ASHFORD	39.0 N OF HYD OPP # 19	OUTSIDE LIMITS
194 ASHFORD DR RESIDENTIAL	20 PE	20 CU	6.60 LRHL 136.20 WWL ASHFORD	15.5 W OF HYD @ 190	RECONNECT SERVICE
198 ASHFORD DR RESIDENTIAL	20 CU	20 CU	6.70 WELL	1.0 W OF S/C	RECONNECT SERVICE
201 ASHFORD DR RESIDENTIAL	20 CU	20 CU	4.80 EWLL 6.90 WWL NUTLEY	0.4 E OF S/C	RECONNECT SERVICE
202 ASHFORD DR RESIDENTIAL	20 CU	20 CU	5.10 EWLL 80.50 EEL MANSFIELD	0.5 E OF S/C	RECONNECT SERVICE
205 ASHFORD DR RESIDENTIAL	20 CU	20 CU	2.00 EWLL 0.60 EWBL	3.2 E OF S/C	RECONNECT SERVICE
206 ASHFORD DR RESIDENTIAL	20 PE	20 CU	13.00 EWHL 67.60 EEL MANSFIELD	20.5 WWL NUTLEY	RECONNECT SERVICE
209 ASHFORD DR RESIDENTIAL	20 PE	20 CU	4.87 LR 32.30 WWL NUTLEY	33.0 WWL NUTLEY	RECONNECT SERVICE
210 ASHFORD DR RESIDENTIAL	20 CU	20 CU	7.20 WELL	OPP S/C	RECONNECT SERVICE
213 ASHFORD DR RESIDENTIAL	20 PE	20 CU	4.57 LR 43.80 WWL NUTLEY	37.5 WWL NUTLEY	RECONNECT SERVICE
214 ASHFORD DR RESIDENTIAL	20 PE	20 CU	4.00 EWBL 7.00 EWLL	7.5 E OF HYD	RECONNECT SERVICE
217 ASHFORD DR RESIDENTIAL	20 PE	20 CU	1.82 RL 52.90 WWL NUTLEY	8.0 E OF HYD	RECONNECT SERVICE
218 ASHFORD DR RESIDENTIAL	20 CU	20 CU	4.00 WEBL 7.00 WELL	1.0 W OF S/C	RECONNECT SERVICE
221 ASHFORD DR RESIDENTIAL	20 PE	20 CU	1.82 RL 64.00 WWL NUTLEY	1.5 E OF HYD	RECONNECT SERVICE

NOTE: CHAINAGES SHOWN ARE ALONG N P/L OF ASHFORD DRIVE

NOTE: VALVES TO BE INSTALLED CLOCKWISE TO CLOSE

FOR INDEX SEE D-17414



METRIC
WHOLE NUMBERS INDICATE MILLIMETRES
DECIMALIZED NUMBERS INDICATE METRES

ENGINEERS GEOSCIENTISTS MANITOBA
Certificate of Authorization
Stantec Consulting Ltd.
No. 1301

LOCATION APPROVED
UNDERGROUND STRUCTURES

SUP. U/G STRUCTURES COMMITTEE DATE

NOTE:
LOCATION OF UNDERGROUND STRUCTURES AS SHOWN ARE BASED ON THE BEST INFORMATION AVAILABLE BUT NO GUARANTEE IS GIVEN THAT ALL EXISTING UTILITIES ARE SHOWN OR THAT THE GIVEN LOCATIONS ARE EXACT. CONFIRMATION OF EXISTENCE AND EXACT LOCATION OF ALL SERVICES MUST BE OBTAINED FROM THE INDIVIDUAL UTILITIES BEFORE PROCEEDING WITH CONSTRUCTION.

VERTICAL DATUM:
HORIZONTAL DATUM:

00	ISSUED FOR TENDER	2026.03.16	RS
NO.	REVISIONS	DATE	BY

Stantec

DESIGNED BY: RS
CHECKED BY: RS

DRAWN BY: MR
APPROVED BY: RS

SCALE:
HORIZONTAL: 1:250
VERTICAL: 1:50

DATE: 2026.01.21
DATE: 2026.03.13

RELEASER FOR CONSTRUCTION: S. COURNOYER

ENGINEER'S SEAL

CONSULTANT DRAWING NUMBER: C-202

THE CITY OF WINNIPEG
WATER AND WASTE DEPARTMENT
ENGINEERING DIVISION

2026 WATER MAIN RENEWALS
CONTRACT 2
ASHFORD DRIVE
75 W OF NUTLEY CIRCLE TO
15 E OF NUTLEY CIRCLE

SHEET 4 OF 19
CITY DRAWING NUMBER: D-17416