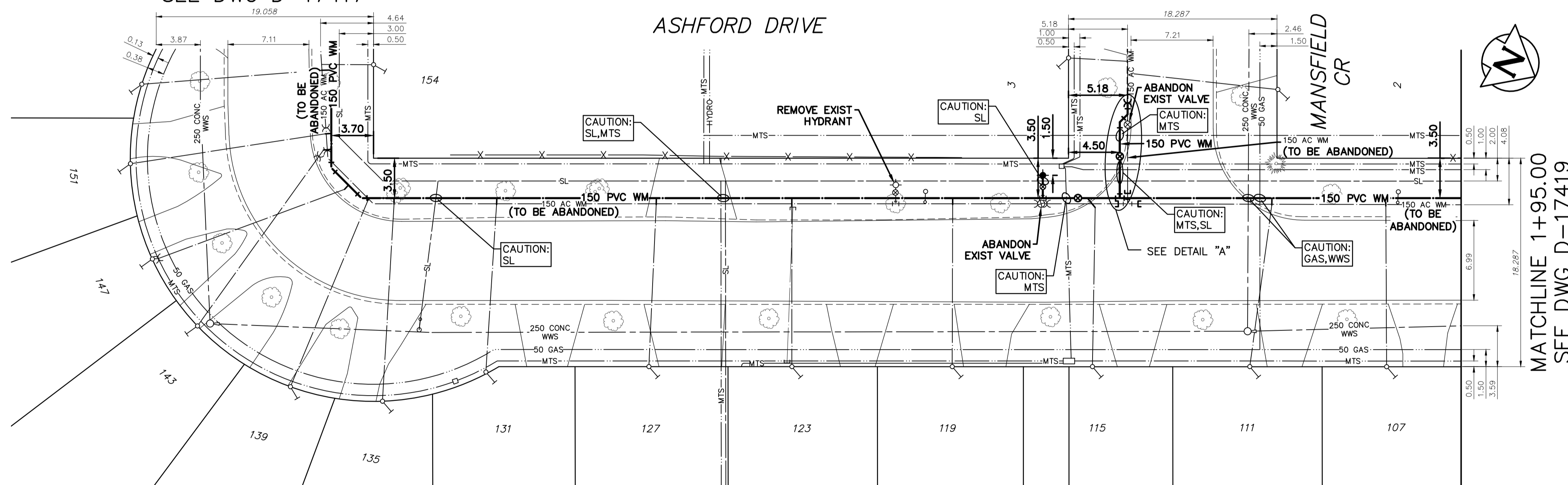


FOR CONTINUATION
SEE DWG D-17417



MATCHLINE 1+95.00
SEE DWG D-17419

WATER SERVICE INFORMATION					
ADDRESS	SIZE (mm) MATERIAL (STREET)	SIZE (mm) MATERIAL (PROP.)	SHORT & LONG MEASUREMENT	CORP LOCATION	REMARK
2 MANSFIELD CRES RESIDENTIAL	20 CU	20 CU	3.50 WEBL 6.00 WELL	8.0 WWL ASHFORD	OUTSIDE LIMITS
3 MANSFIELD CRES RESIDENTIAL	20 PE	20 CU	5.33 RLHL 8.80 WWL ASHFORD	8.5 WWL ASHFORD	OUTSIDE LIMITS
107 ASHFORD DR RESIDENTIAL	20 CU	20 CU	1.21 RL	43.0 N OF HYD OPP 119	RECONNECT SERVICE
111 ASHFORD DR RESIDENTIAL	20 PE	20 CU	5.02 RL 15.90 NSL MANSFIELD	33.0 N OF HYD OPP 119	RECONNECT SERVICE
115 ASHFORD DR RESIDENTIAL	20 PE	20 CU	5.48 RL 2.10 NSL MANSFIELD	17.5 N OF HYD OPP 119	RECONNECT SERVICE
119 ASHFORD DR RESIDENTIAL	20 PE	20 CU	4.26 RL 10.20 SSL MANSFIELD	5.0 N OF HYD OPP 119	RECONNECT SERVICE
123 ASHFORD DR RESIDENTIAL	20 CU	20 CU	4.50 NSBL 5.60 NSLL	OPP S/C	RECONNECT SERVICE
127 ASHFORD DR RESIDENTIAL	20 PE	20 CU	5.18 RL 36.80 SSL MANSFIELD	21.0 S OF HYD OPP 119	RECONNECT SERVICE
131 ASHFORD DR RESIDENTIAL	20 PE	20 CU	3.04 RL 51.20 SSL MANSFIELD, ALONG EL ASHFORD	35.0 S OF HYD OPP 119	RECONNECT SERVICE
135 ASHFORD DR RESIDENTIAL	20 PE	20 CU	3.96 LR 60.70 SSL MANSFIELD, ALONG EL ASHFORD	44.0 S OF HYD OPP 119	RECONNECT SERVICE
139 ASHFORD DR RESIDENTIAL	20 PE	20 CU	4.57 RL 68.90 SSL MANSFIELD, ALONG EL ASHFORD	19.0 E OF HYD @ 158	RECONNECT SERVICE
143 ASHFORD DR RESIDENTIAL	20 CU	20 CU	1.70 NSBL #143 2.90 NSLL #143	5.7 W OF S/C	RECONNECT SERVICE
147 ASHFORD DR RESIDENTIAL	-	20 CU	3.70 NSL	-	RECONNECT SERVICE
151 ASHFORD DR RESIDENTIAL	20 CU	20 CU	3.20 EWBL #151 4.60 EWLL #151	0.3 W OF S/C	RECONNECT SERVICE
154 ASHFORD DR RESIDENTIAL	20 PE	20 CU	4.75 RL 8.20 WWL ASHFORD	7.0 E OF HYD @ 158	RECONNECT SERVICE

NOTE: CHAINAGES SHOWN ARE ALONG
W P/L OF ASHFORD DRIVE

NOTE: VALVES TO BE INSTALLED
CLOCKWISE TO CLOSE

FOR INDEX SEE
D-17414



METRIC
WHOLE NUMBERS INDICATE MILLIMETRES
DECIMALIZED NUMBERS INDICATE METRES

**ENGINEERS
GEOSCIENTISTS
MANITOBA**
Certificate of Authorization
Stantec Consulting Ltd.
No. 1301

LOCATION APPROVED
UNDERGROUND STRUCTURES

SUPV. U/G STRUCTURES COMMITTEE DATE

NOTE:
LOCATION OF UNDERGROUND STRUCTURES AS
SHOWN ARE BASED ON THE BEST INFORMATION
AVAILABLE BUT NO GUARANTEE IS GIVEN THAT ALL
EXISTING UTILITIES ARE SHOWN OR THAT THE GIVEN
LOCATIONS ARE EXACT. CONFIRMATION OF
EXISTENCE AND EXACT LOCATION OF ALL
SERVICES MUST BE OBTAINED FROM THE INDIVIDUAL
UTILITIES BEFORE PROCEEDING WITH CONSTRUCTION.

VERTICAL DATUM:
HORIZONTAL DATUM:

NO.	ISSUED FOR TENDER	DATE	BY
00	ISSUED FOR TENDER	2026.03.16	RS
	REVISIONS	DATE	BY



DESIGNED BY: RS
CHECKED BY: RS
DRAWN BY: MR
APPROVED BY: RS
SCALE:
HORIZONTAL: 1:250
VERTICAL: 1:50
DATE: 2026.01.21
DATE: 2026.03.13

ENGINEER'S SEAL

CONSULTANT DRAWING NUMBER
C-204

THE CITY OF WINNIPEG
WATER AND WASTE DEPARTMENT
ENGINEERING DIVISION

2026 WATER MAIN RENEWALS
CONTRACT 2
ASHFORD DRIVE
80 S OF MANSFIELD CRESCENT TO
25 N OF MANSFIELD CRESCENT

SHEET 6 OF 19
CITY DRAWING NUMBER
D-17418