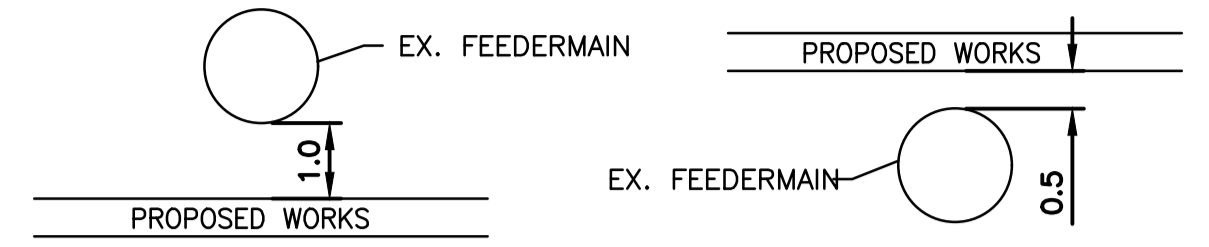
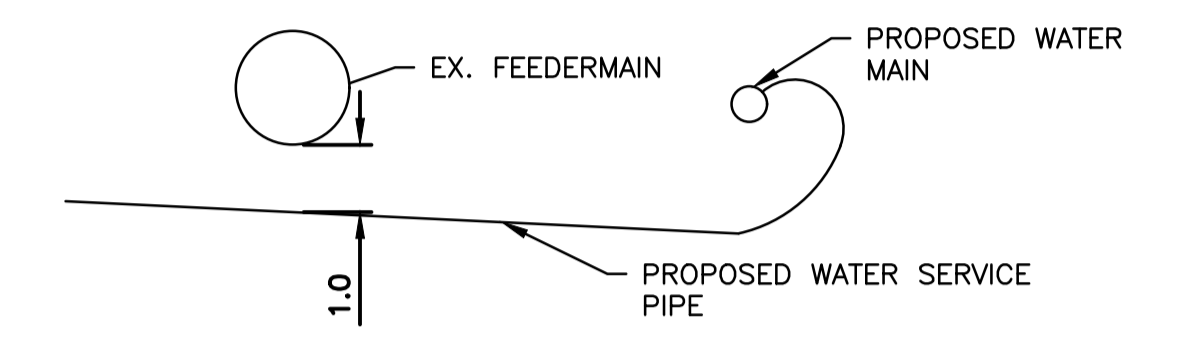


CAUTION: FEEDERMAIN
 - CONTACT THE DEPARTMENT CONSTRUCTION SERVICE COORDINATOR AT jbain@winnipeg.ca 7 DAYS PRIOR TO THE COMMENCEMENT OF CONSTRUCTION TO ARRANGE FOR AN INSPECTION.
 - PRIOR TO ANY CONSTRUCTION THE FEEDERMAIN MUST BE EXPOSED BY A SOFT DIG METHOD SO AS TO CONFIRM DEPTH AND LOCATION.
 - A MINIMUM CLEARANCE OF 1.0 METER MUST BE PROVIDED BETWEEN THE UNDERSIDE OF ANY EXISTING FEEDERMAIN AND THE TOP OF THE PROPOSED WORKS. THIS INSTALLATION BY TRENCHLESS METHOD ONLY.

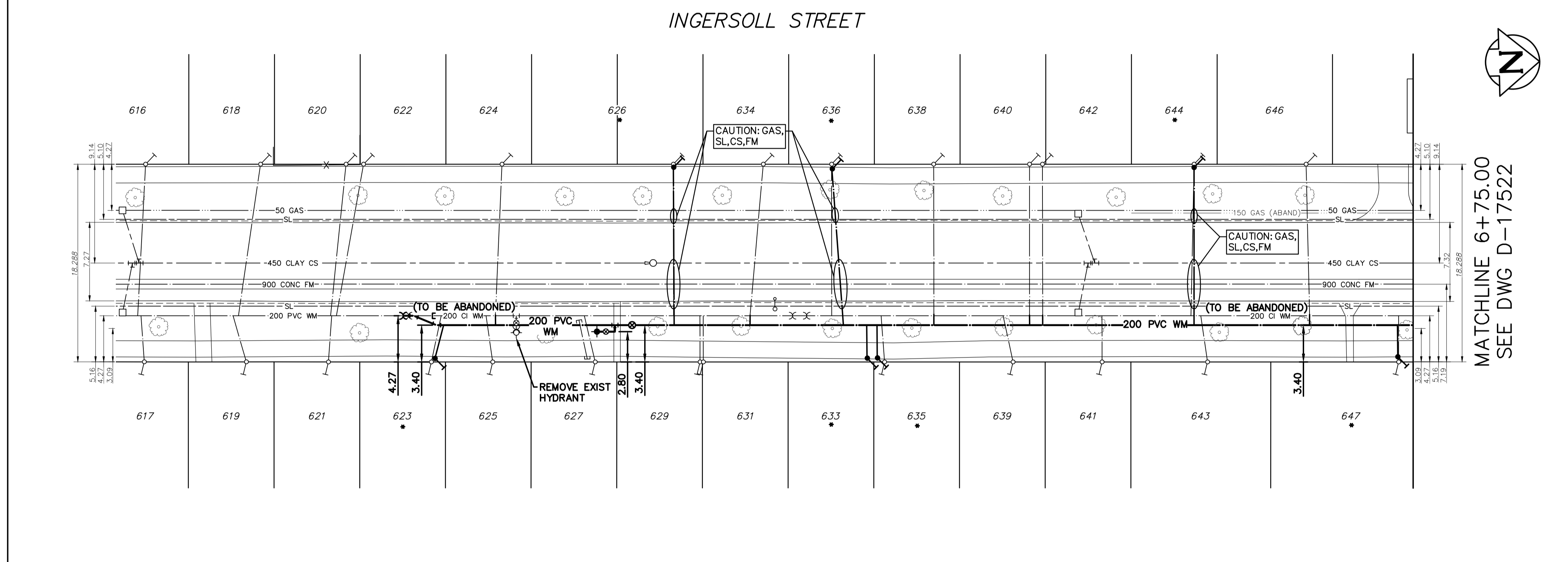


- A MINIMUM CLEARANCE OF 0.5 METERS MUST BE PROVIDED BETWEEN THE UNDERSIDE OF THE PROPOSED WORKS AND THE TOP OF THE EXISTING FEEDERMAIN BY TRENCHLESS OR OPEN TRENCH.
 - A SHAFT MUST BE EXCAVATED BY SOFT DIG METHODS 4.0 METERS FROM THE CENTRELINE OF FEEDERMAIN TO CONFIRM THE ALIGNMENT AND THE ELEVATION OF THE DRILLING ROD BEFORE IT CROSSED OVER OR UNDER THE FEEDERMAIN. THIS CONFIRMATION MUST BE WITNESSED BY A CITY REPRESENTATIVE.



- REVERSE TAP MAY BE REQUIRED FOR LONG SIDE WATER SERVICE RENEWALS TO BE ABLE TO ACHIEVE MINIMUM OF 1.0 METER CLEARANCE BELOW THE FEEDERMAIN
 - INSTALLATION EQUIPMENT FOR THE PROPOSED WORKS SHALL NOT CROSS OR TRAVEL ALONG EITHER SIDE OF THE FEEDERMAIN WITHIN A LATERAL DISTANCE OF 5.0 METERS FROM THE CENTRELINE OF THE FEEDERMAIN.
 - DO NOT OPERATE VIBRATORY EQUIPMENT OVER OR WITHIN 3.0 METERS OF THE FEEDERMAIN CENTRELINE.
 - CONCRETE DEMOLITION AND REMOVAL WITHIN 3 METERS HORIZONTALLY OF THE FEEDERMAIN SHALL BE COMPLETED BY SAW CUTTING AND REMOVAL, OR BY THE USE OF HAND HELD JACKHAMMERS. USE OF MACHINE MOUNTED CONCRETE BREAKERS ABOVE THE FEEDERMAIN SHALL NOT BE PERMITTED.

NOTE:
 REFER TO SECTIONS E12-E14 FOR WORKING IN CLOSE PROXIMITY TO FEEDER MAIN.



WATER SERVICE INFORMATION					
ADDRESS	SIZE (mm) MATERIAL (STREET)	SIZE (mm) MATERIAL (PROP.)	SHORT & LONG MEASUREMENT	CORP LOCATION	REMARK
* 647 INGERSOLL ST RESIDENTIAL	20 LEAD	20 LEAD	1.07 SNL HOUSE LEAD	OPP S/C	RENEW TO PL
646 INGERSOLL ST RESIDENTIAL	20 CU	20 CU	14.83 SSL ST MATTHEWS 23.17 SSL ST MATTHEWS	0.3 N OF S/C	RECONNECT SERVICE
* 644 INGERSOLL ST RESIDENTIAL	12 LEAD	12 LEAD	2.13 SNLL 1.22 SNBL	0.3 S OF S/C	RENEW TO PL
643 INGERSOLL ST RESIDENTIAL	20 CU	20 CU	0.61 SNL HOUSE 32.31 SSL ST MATTHEWS	0.6 S OF S/C	RECONNECT SERVICE
642 INGERSOLL ST RESIDENTIAL	20 CU	12 LEAD	1.00 SSSL	OPP S/C	RECONNECT SERVICE
641 INGERSOLL ST RESIDENTIAL	20 CU	12 LEAD	0.91 SNL HOUSE 42.37 SSL ST MATTHEWS	OPP S/C	RECONNECT SERVICE
640 INGERSOLL ST RESIDENTIAL	20 CU	16 LEAD	1.50 SNLL	OPP S/C	RECONNECT SERVICE
639 INGERSOLL ST RESIDENTIAL	12 CU	12 LEAD	0.91 SNL HOUSE 50.29 SSL ST MATTHEWS	0.9 S OF S/C	RECONNECT SERVICE
638 INGERSOLL ST RESIDENTIAL	20 CU	20 CU	0.91 SNL BUILDING 57.61 SSL ST MATTHEWS	OPP S/C	RECONNECT SERVICE
* 636 INGERSOLL ST RESIDENTIAL	12 LEAD	12 LEAD	0.91 SNL HOUSE 67.06 SSL ST MATTHEWS	OPP S/C	RENEW TO PL
* 635/633 INGERSOLL ST RESIDENTIAL	16 CU	16 CU	OPP SL OF 637 62.18 SSL ST MATTHEWS	0.3 S OF S/C	SEPARATE AND RENEW WYED SERVICE
634 INGERSOLL ST RESIDENTIAL	20 CU	20 CU	1.07 SNL HOUSE 23.16 N 1ST HYD S ST MATTHEWS	1.2 S OF S/C	RECONNECT SERVICE
631 INGERSOLL ST RESIDENTIAL	20 CU	12 LEAD	0.31 NSL OF HOUSE 78.94 SSL ST MATTHEWS	OPP S/C	RECONNECT SERVICE
629 INGERSOLL ST RESIDENTIAL	20 CU	12 LEAD	1.52 NSL HOUSE 79.25 SSL ST MATTHEWS	OPP S/C	RECONNECT SERVICE
627 INGERSOLL ST RESIDENTIAL	20 CU	20 CU	2.00 SNLL 1.50 SNBL	1.0 S OF S/C	RECONNECT SERVICE
* 626 INGERSOLL ST RESIDENTIAL	12 LEAD	12 LEAD	1.83 SNL HOUSE 81.69 SSL ST MATTHEWS	OPP S/C	RENEW TO PL
625 INGERSOLL ST RESIDENTIAL	20 CU	20 CU	2.89 SNBL 3.80 SNPL	0.6 S OF S/C	RECONNECT SERVICE
624 INGERSOLL ST RESIDENTIAL	20 CU	20 CU	2.44 SNL OF HOUSE	0.6 S OF S/C	RECONNECT SERVICE
* 623 INGERSOLL ST RESIDENTIAL	12 LEAD	12 LEAD	0.91 SNL OF CELLAR 104.09 SSL ST MATTHEWS	0.9 N OF S/C	RENEW TO PL
622 INGERSOLL ST RESIDENTIAL	20 CU	12 LEAD	0.43 SSL HOUSE 110.34 SSL ST MATTHEWS	2.5 S OF S/C	OUTSIDE LIMITS
621 INGERSOLL ST RESIDENTIAL	20 CU	12 LEAD	2.29 SNL OF HOUSE 113.69 SSL ST MATTHEWS	0.3 N OF S/C	OUTSIDE LIMITS
620 INGERSOLL ST RESIDENTIAL	20 CU	12 LEAD	0.61 SNL OF HOUSE 112.17 SSL ST MATTHEWS	1.4 S OF S/C	OUTSIDE LIMITS
619 INGERSOLL ST RESIDENTIAL	20 CU	20 CU	1.83 SNL OF HOUSE 121.31 SSL ST MATTHEWS	1.2 S OF S/C	OUTSIDE LIMITS
618 INGERSOLL ST RESIDENTIAL	20 CU	12 LEAD	0.61 SNL OF HOUSE 119.79 SSL ST MATTHEWS	2.0 S OF S/C	OUTSIDE LIMITS
617 INGERSOLL ST RESIDENTIAL	20 CU	16 LEAD	3.29 NSL HOUSE 130.45 SSL ST MATTHEWS	0.3 S OF S/C	OUTSIDE LIMITS
616 INGERSOLL ST RESIDENTIAL	20 CU	12 LEAD	3.05 NSL HOUSE 130.78 SSL ST MATTHEWS	0.5 S OF S/C	OUTSIDE LIMITS

* SERVICES TO BE RENEWED TO PL. ALL OTHER TO BE RECONNECTED

NOTE: CHAINAGES SHOWN ARE ALONG E. P/L OF INGERSOLL STREET

NOTE: VALVES TO BE INSTALLED COUNTER-CLOCKWISE TO CLOSE

FOR INDEX SEE D-17515

ENGINEERS GEOSCIENTISTS MANITOBA
 Certificate of Authorization
 Stantec Consulting Ltd.
 No. 1301

METRIC
 WHOLE NUMBERS INDICATE MILLIMETRES
 DECIMALIZED NUMBERS INDICATE METRES

LOCATION APPROVED UNDERGROUND STRUCTURES

SUPV. U/G STRUCTURES COMMITTEE DATE

NOTE:
 LOCATION OF UNDERGROUND STRUCTURES AS SHOWN ARE BASED ON THE BEST INFORMATION AVAILABLE BUT NO GUARANTEE IS GIVEN THAT ALL EXISTING UTILITIES ARE SHOWN OR THAT THE GIVEN LOCATIONS ARE EXACT. CONFIRMATION OF EXISTENCE AND EXACT LOCATION OF ALL SERVICES MUST BE OBTAINED FROM THE INDIVIDUAL UTILITIES BEFORE PROCEEDING WITH CONSTRUCTION.

VERTICAL DATUM:
 HORIZONTAL DATUM:

00	ISSUED FOR TENDER	2026.04.06	RS
NO.	REVISIONS	DATE	BY

Stantec

DESIGNED BY: JH
 CHECKED BY: RS
 DRAWN BY: MR
 APPROVED BY: RS
 SCALE: HORIZONTAL 1:250, VERTICAL 1:50
 DATE: 2026.04.06
 RELEASED FOR CONSTRUCTION: S. COURNOYER
 DATE: 2026.04.02

ENGINEER'S SEAL

CONSULTANT DRAWING NUMBER: C-206

THE CITY OF WINNIPEG
 WATER AND WASTE DEPARTMENT
 ENGINEERING DIVISION

2026 WATER MAIN RENEWALS
 CONTRACT 4
 INGERSOLL STREET
 105 S OF ST MATTHEWS AVENUE TO
 15 S OF ST MATTHEWS AVENUE

SHEET 8 OF 13
 CITY DRAWING NUMBER: D-17521