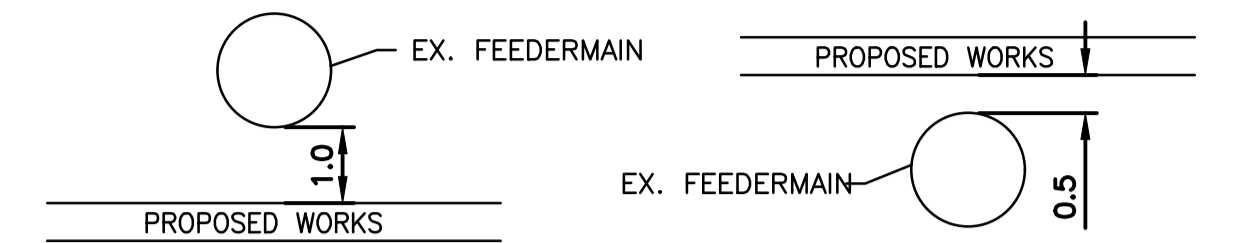
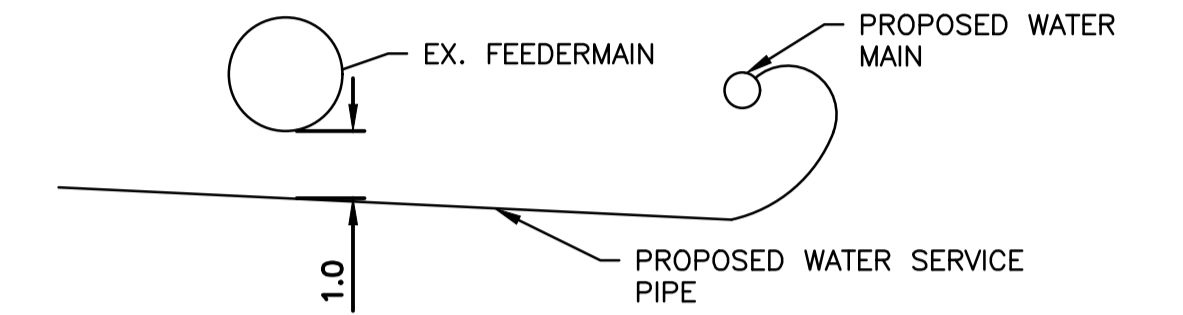


CAUTION: FEEDERMAIN
 - CONTACT THE DEPARTMENT CONSTRUCTION SERVICE COORDINATOR AT jboin@winipeg.ca 7 DAYS PRIOR TO THE COMMENCEMENT OF CONSTRUCTION TO ARRANGE FOR AN INSPECTION.
 - PRIOR TO ANY CONSTRUCTION THE FEEDERMAIN MUST BE EXPOSED BY A SOFT DIG METHOD SO AS TO CONFIRM DEPTH AND LOCATION.
 - A MINIMUM CLEARANCE OF 1.0 METER MUST BE PROVIDED BETWEEN THE UNDERSIDE OF ANY EXISTING FEEDERMAIN AND THE TOP OF THE PROPOSED WORKS. THIS INSTALLATION BY TRENCHLESS METHOD ONLY.

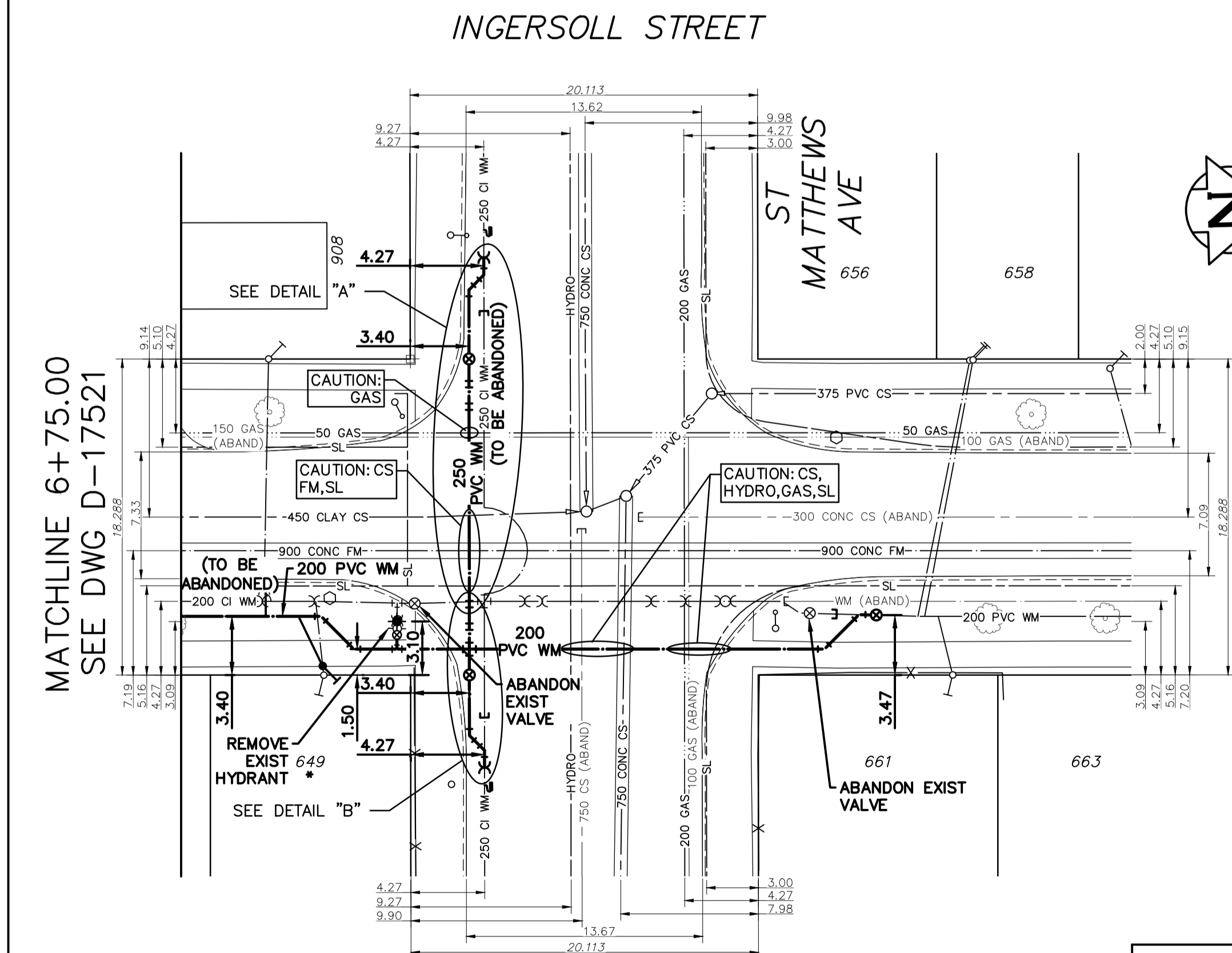


- A MINIMUM CLEARANCE OF 0.5 METERS MUST BE PROVIDED BETWEEN THE UNDERSIDE OF THE PROPOSED WORKS AND THE TOP OF THE EXISTING FEEDERMAIN BY TRENCHLESS OR OPEN TRENCH.
 - A SHAFT MUST BE EXCAVATED BY SOFT DIG METHODS 4.0 METERS FROM THE CENTRELINE OF FEEDERMAIN TO CONFIRM THE ALIGNMENT AND THE ELEVATION OF THE DRILLING ROD BEFORE IT CROSSED OVER OR UNDER THE FEEDERMAIN. THIS CONFIRMATION MUST BE WITNESSED BY A CITY REPRESENTATIVE.

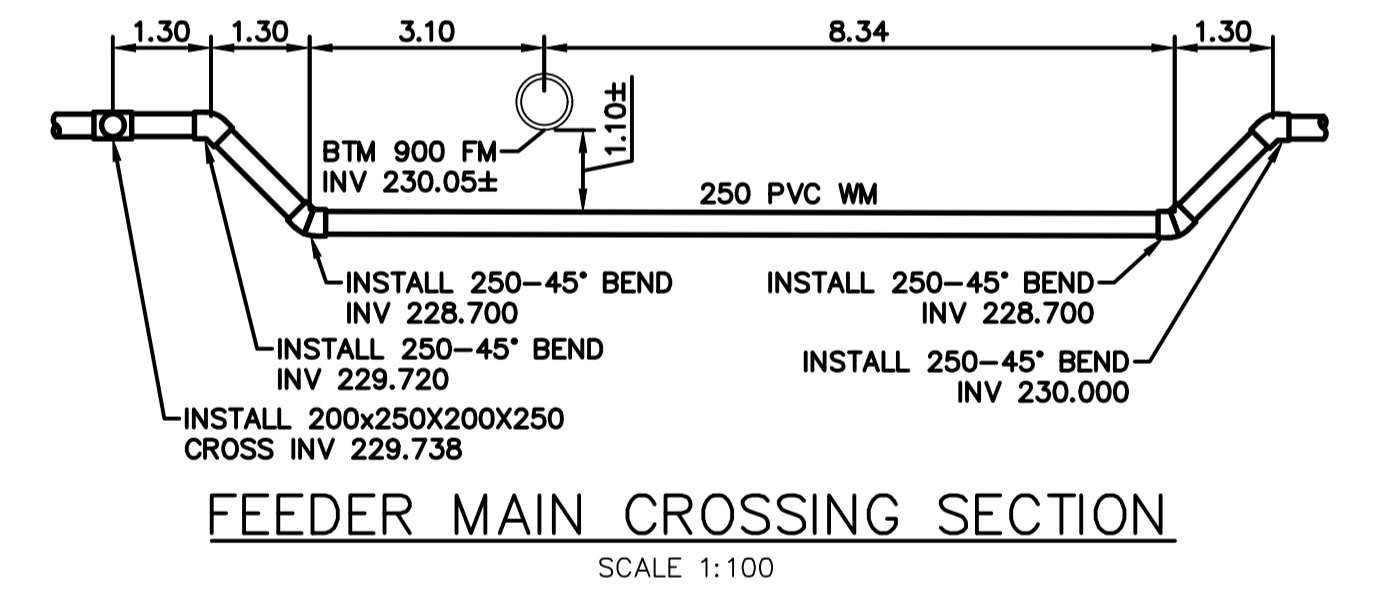
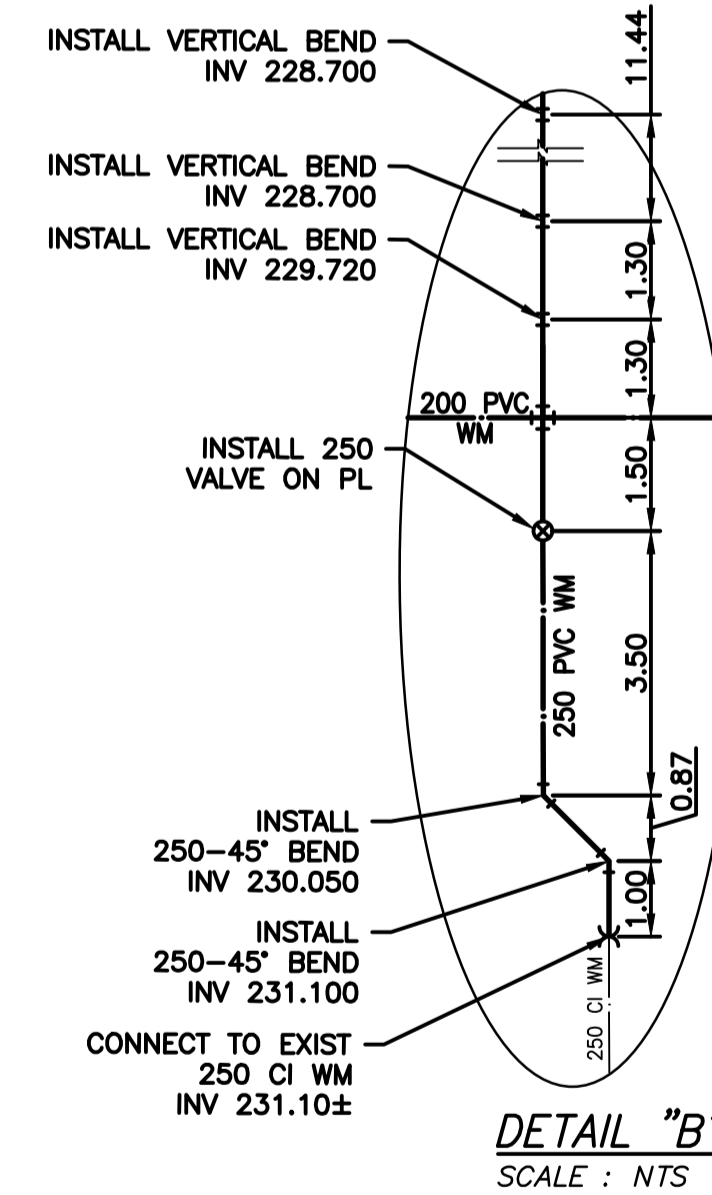
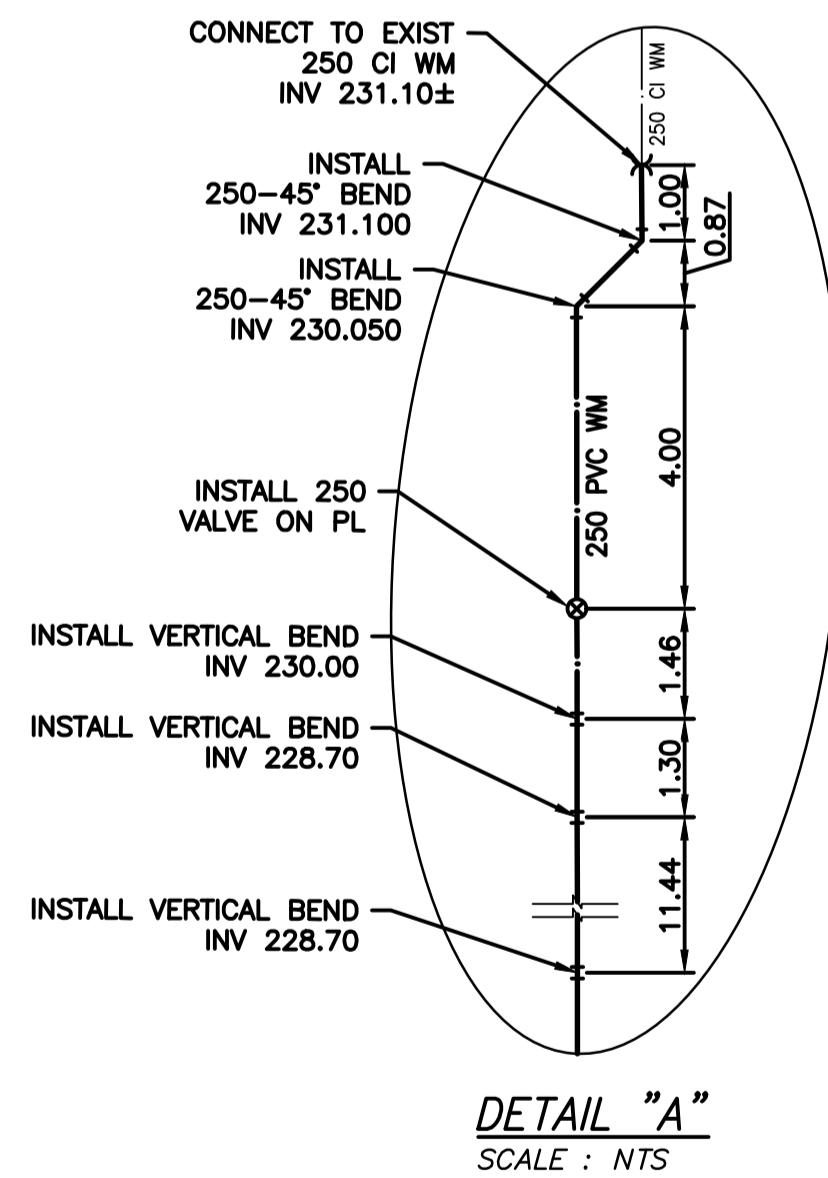


- REVERSE TAP MAY BE REQUIRED FOR LONG SIDE WATER SERVICE RENEWALS TO BE ABLE TO ACHIEVE MINIMUM OF 1.0 METER CLEARANCE BELOW THE FEEDERMAIN
 - INSTALLATION EQUIPMENT FOR THE PROPOSED WORKS SHALL NOT CROSS OR TRAVEL ALONG EITHER SIDE OF THE FEEDERMAIN WITHIN A LATERAL DISTANCE OF 5.0 METERS FROM THE CENTRELINE OF THE FEEDERMAIN.
 - DO NOT OPERATE VIBRATORY EQUIPMENT OVER OR WITHIN 3.0 METERS OF THE FEEDERMAIN CENTRELINE.
 - CONCRETE DEMOLITION AND REMOVAL WITHIN 3 METERS HORIZONTALLY OF THE FEEDERMAIN SHALL BE COMPLETED BY SAW CUTTING AND REMOVAL, OR BY THE USE OF HAND HELD JACKHAMMERS. USE OF MACHINE MOUNTED CONCRETE BREAKERS ABOVE THE FEEDERMAIN SHALL NOT BE PERMITTED.

NOTE:
 REFER TO SECTIONS E12-E14 FOR WORKING IN CLOSE PROXIMITY TO FEEDER MAIN.



MATCHLINE 6+75.00
 SEE DWG D-17521



WATER SERVICE INFORMATION					
ADDRESS	SIZE (mm) MATERIAL (STREET)	SIZE (mm) MATERIAL (PROP.)	SHORT & LONG MEASUREMENT	CORP LOCATION	REMARK
908 ST MATTHEWS AVE RESIDENTIAL	20 CU	12 LEAD	2.90 NSL STORE 8.23 SSL ST MATTHEWS	0.1 N OF S/C	RECONNECT SERVICE
661 INGERSOLL ST RESIDENTIAL	20 CU	12 LEAD	1.90 SNL HSE 10.90 NNL ST MATTHEWS	0.8 S OF S/C	OUTSIDE LIMITS
658 INGERSOLL ST RESIDENTIAL	20 CU	-	-	-	OUTSIDE LIMITS
656 INGERSOLL ST RESIDENTIAL	20 CU	-	-	-	OUTSIDE LIMITS
649 INGERSOLL ST RESIDENTIAL	20 LEAD	20 LEAD	2.96 SNL HOUSE 5.03 SSL ST MATTHEWS	0.4 S OF S/C	RENEW TO PL

* SERVICES TO BE RENEWED TO PL. ALL OTHER TO BE RECONNECTED

NOTE: CHAINAGES SHOWN ARE ALONG E. P/L OF INGERSOLL STREET

NOTE: VALVES TO BE INSTALLED COUNTER-CLOCKWISE TO CLOSE

FOR INDEX SEE D-17515



METRIC
 WHOLE NUMBERS INDICATE MILLIMETRES
 DECIMALIZED NUMBERS INDICATE METRES

ENGINEERS GEOSCIENTISTS MANITOBA
 Certificate of Authorization
 Stantec Consulting Ltd.
 No. 1301

LOCATION APPROVED UNDERGROUND STRUCTURES		VERTICAL DATUM:	
SUPV. U/G STRUCTURES COMMITTEE		HORIZONTAL DATUM:	
DATE			
NOTE:			
LOCATION OF UNDERGROUND STRUCTURES AS SHOWN ARE BASED ON THE BEST INFORMATION AVAILABLE BUT NO GUARANTEE IS GIVEN THAT ALL EXISTING UTILITIES ARE SHOWN OR THAT THE GIVEN LOCATIONS ARE EXACT. CONFIRMATION OF EXISTENCE AND EXACT LOCATION OF ALL UTILITIES MUST BE OBTAINED FROM THE INDIVIDUAL UTILITIES BEFORE PROCEEDING WITH CONSTRUCTION.			
NO.	ISSUED FOR TENDER	DATE	BY
00	ISSUED FOR TENDER	2026.04.06	RS
	REVISIONS	DATE	BY

Stantec

DESIGNED BY	JH	CHECKED BY	RS
DRAWN BY	MR	APPROVED BY	RS
SCALE:		RELEASED FOR CONSTRUCTION	S. COURNOYER
HORIZONTAL	1:250	DATE	2026.04.02
VERTICAL	1:50		
DATE	2026.04.06		

ENGINEER'S SEAL
 CONSULTANT DRAWING NUMBER
C-207

THE CITY OF WINNIPEG
 WATER AND WASTE DEPARTMENT
 ENGINEERING DIVISION

2026 WATER MAIN RENEWALS
CONTRACT 4
INGERSOLL STREET
15 S OF ST MATTHEWS AVENUE TO 5 N OF ST MATTHEWS AVENUE

SHEET **9** OF **13**
 CITY DRAWING NUMBER
D-17522