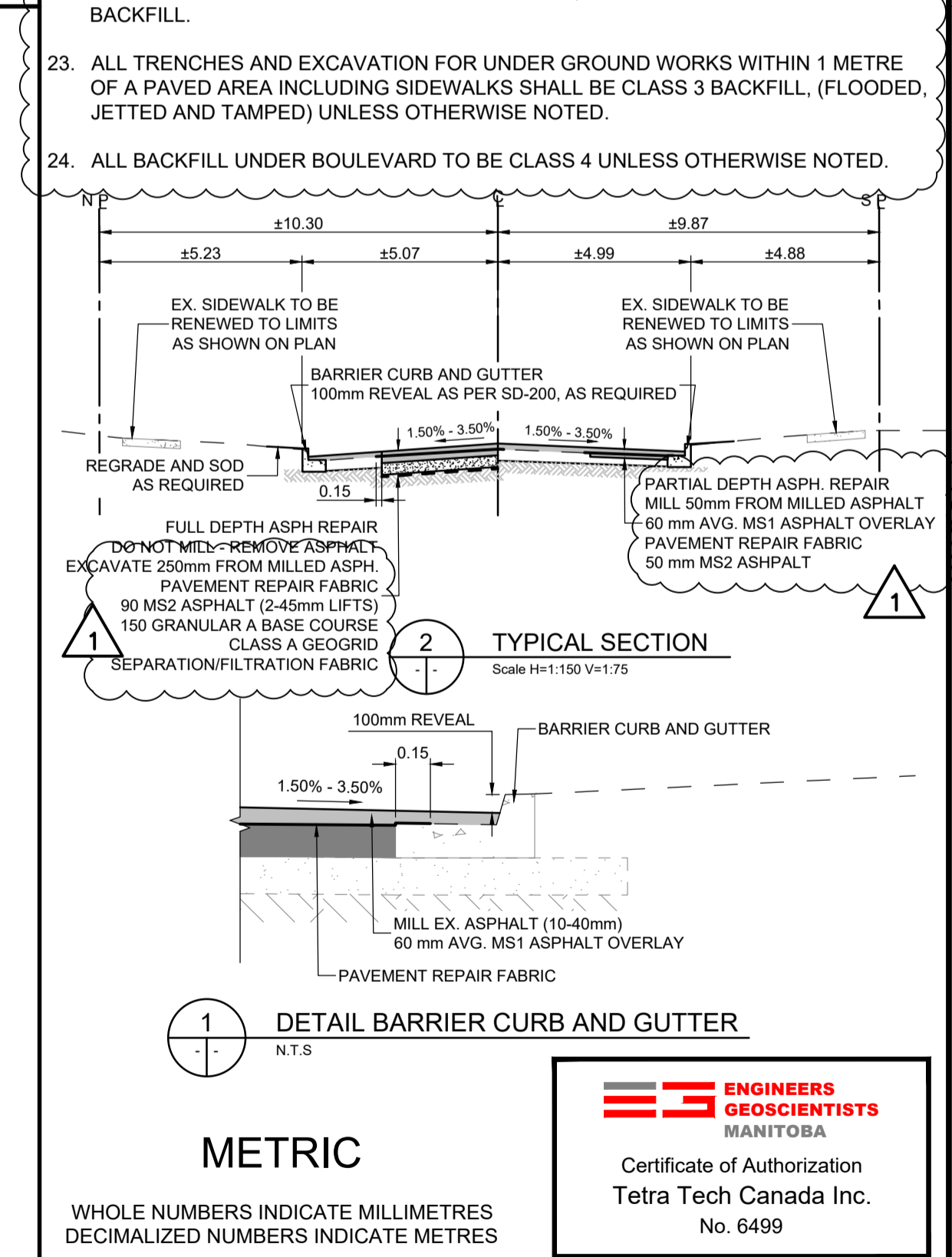
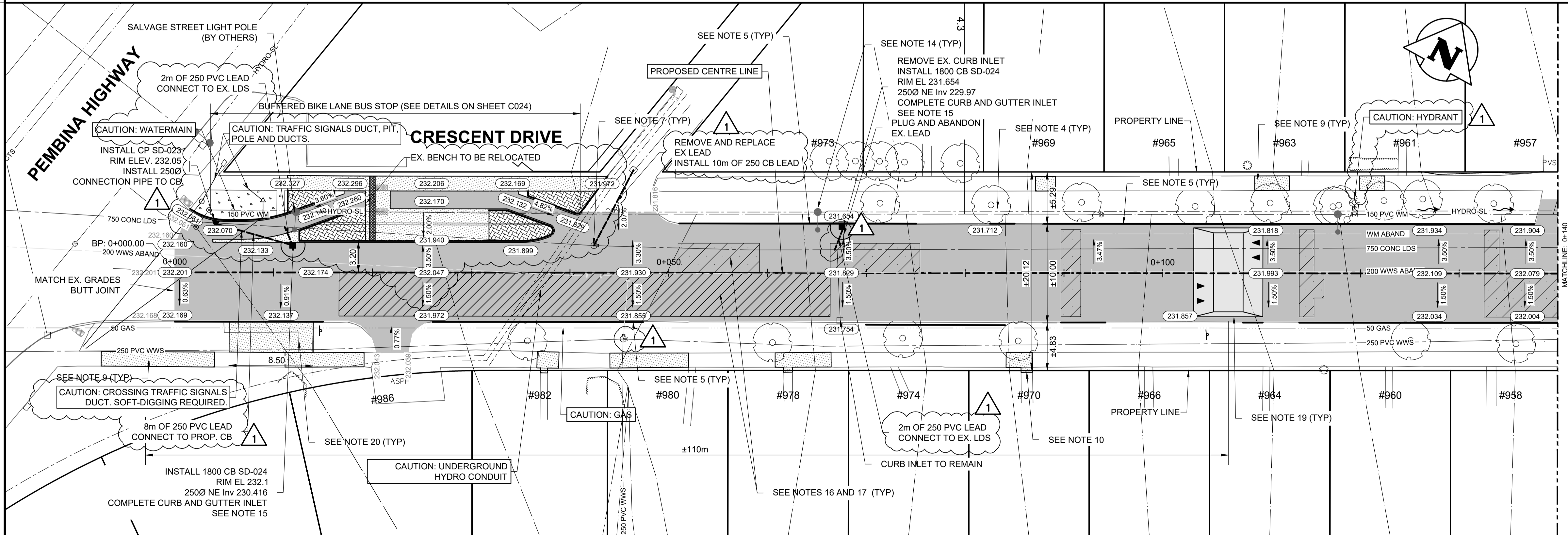
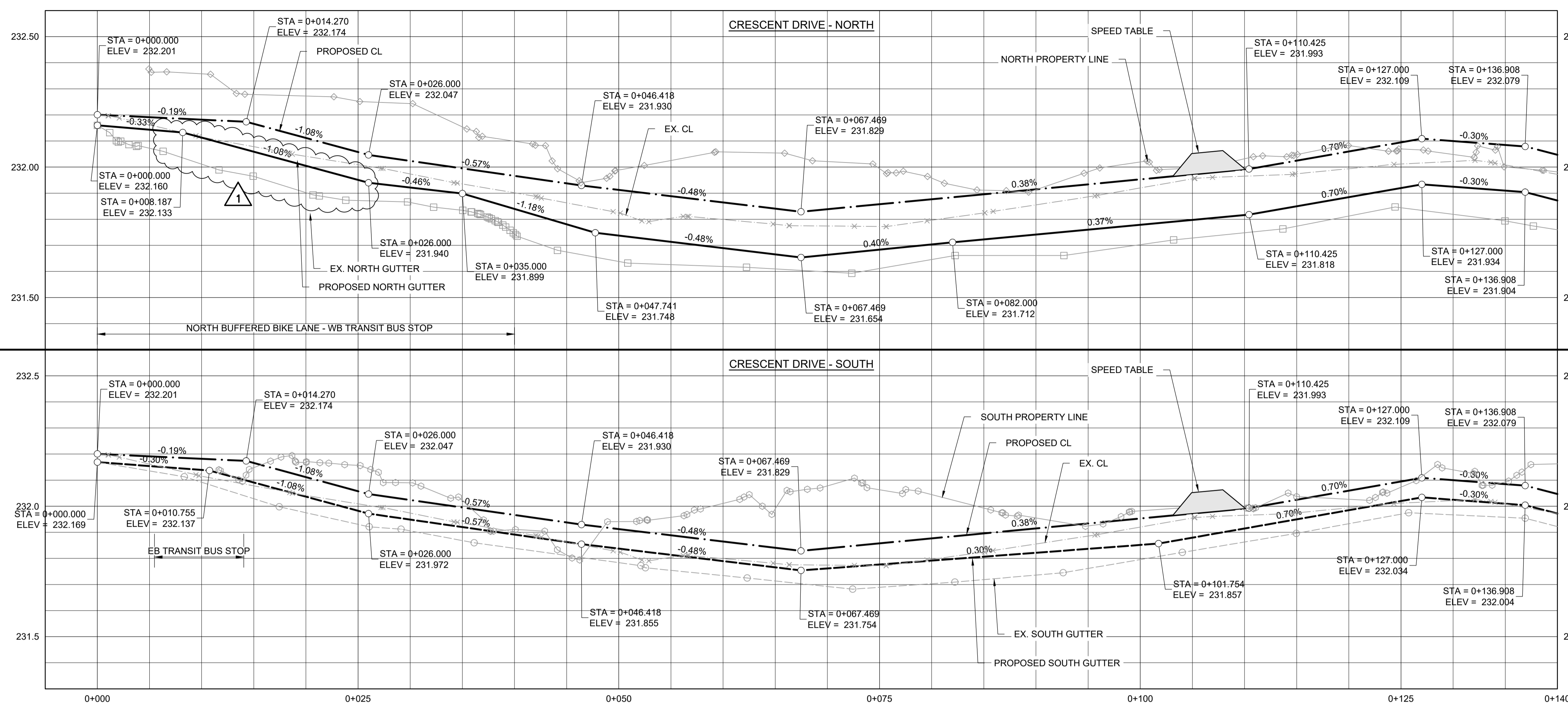


- CONSTRUCTION NOTES:**
- ALL WORK AND MATERIALS TO BE IN ACCORDANCE WITH LATEST REVISION OF THE CITY OF WINNIPEG STANDARD CONSTRUCTION SPECIFICATIONS.
 - LEGAL PLAN AND UNDERGROUND INFORMATION FROM CITY OF WINNIPEG LBIS.
 - LOCATION OF EXISTING UTILITIES/SERVICES TO BE CONFIRMED IN THE FIELD BY THE CONTRACTOR.
 - CONTRACTOR TO TAKE PRECAUTIONARY STEPS TO AVOID DAMAGE FROM CONSTRUCTION ACTIVITIES TO TREES WITHIN THE LIMITS OF CONSTRUCTION. REFER TO SPECIFICATIONS E5 AND E27.
 - RENEW BARRIER CURB AND GUTTER SD-200 WHERE SHOWN ON THE DRAWINGS AND AS DIRECTED BY THE CONTRACT ADMINISTRATOR.
 - CONSTRUCT MODIFIED BARRIER CURB AND GUTTER (100mm REVEAL)
 - ADJUST ALL WATER VALVES, MANHOLES, CATCH PITS, CURB INLETS, CATCH BASIN RIMS, AND WATER SHUT OFF VALVES TO NEW GRADES. MANHOLE AND CATCH PIT ISOLATIONS AS PER SD-220G/SD-220E, RESPECTIVELY.
 - ABANDON CATCH BASIN, CATCH PIT, AND CATCH INLET
 - SIDEWALK RENEWAL LOCATIONS TO BE FINALIZED IN THE FIELD BY THE CONTRACT ADMINISTRATOR. PROVIDE 13mm SIDEWALK EXPANSION JOINTS AS PER SD-228AA AS LAID OUT BY THE CONTRACT ADMINISTRATOR.
 - ALL PRIVATE SIDEWALKS TO BE ADJUSTED TO NEW SIDEWALK OR TOP OF CURB ELEVATIONS AS REQUIRED. SIDEWALKS TO BE REPLACED WITH LIKE MATERIALS.
 - CB LEADS AND CP LEADS TO BE INSTALLED TO INVERT ELEVATIONS AS SHOWN. ALL CB AND CP LEADS TO BE INSTALLED AT MIN 2.0% SLOPE AND AS DIRECTED BY CONTRACT ADMINISTRATOR.
 - LIMITS OF BOULEVARD GRADING TO BE FINALIZED IN THE FIELD BY THE CONTRACT ADMINISTRATOR.
 - CONTRACTOR TO CONFIRM LOCATION AND LIMITS OF SEWER REPAIRS AS INDICATED ON THE DRAWINGS BY PERFORMING VIDEO INSPECTION AND REVIEWING WITH THE CONTRACT ADMINISTRATOR PRIOR TO CONSTRUCTION.
 - LAMP STANDARDS, HYDRO POLES AND ANCHORS THAT REQUIRE TEMPORARY SUPPORT, REMOVAL OR REPLACEMENT, TO BE DONE AT THE EXPENSE OF THE CONTRACTOR, AS NECESSARY. REFER TO SPECIFICATION E30 AND E36.
 - COMPLETE CATCH BASIN/CATCH PIT CURB ISOLATIONS IN ACCORDANCE WITH SD-220E
 - COVER PARTIAL AND FULL DEPTH ASPHALT REPAIRS WITH PAVEMENT REPAIR FABRIC EXTENDING 150mm AROUND PERIMETER OF REPAIR AS PER E13.
 - CONSTRUCT PARTIAL/FULL DEPTH ASPHALT PAVEMENT REPAIR AS DETAILED IN SECTION 2
 - ADJUST PRECAST SIDEWALK BLOCKS AS DIRECTED BY THE CA.
 - CONSTRUCT SPEED TABLES AS PER DETAIL IN DWG 025 AND E34.
 - UPGRADE TRANSIT STOP.
 - ALL DIMENSIONS ARE TO BACK OF CURB
 - ALL PIPE UNDER EXISTING AND FUTURE PAVEMENT TO BE INSTALLED USING TRENCHLESS METHODS. WHERE NOT POSSIBLE, OPEN CUT WITH CLASS 2 BACKFILL.
 - ALL TRENCHES AND EXCAVATION FOR UNDER GROUND WORKS WITHIN 1 METRE OF A PAVED AREA INCLUDING SIDEWALKS SHALL BE CLASS 3 BACKFILL, (FLOODED, JETTED AND TAMPED) UNLESS OTHERWISE NOTED.
 - ALL BACKFILL UNDER BOULEVARD TO BE CLASS 4 UNLESS OTHERWISE NOTED.



HYDRANT	CONCRETE	150 WM	WATERMAIN	150 WM
VALVE	ASPHALT	300 LDS	LAND DRAINAGE SEWER	300 LDS
MANHOLE	SIDEWALK	250 WWS	WASTE WATER SEWER	250 WWS
CATCH BASIN	PAVING STONES	250 WWS	HYDRANT	
CATCH PIT	PARTIAL DEPTH REPAIR	250 WWS	VALVE	
WATERMAIN	FULL DEPTH REPAIR	250 WWS	PROPERTY LINE	
300 LDS	PROPERTY LINE	250 WWS	ELEVATION	(232.000)
250 WWS	ELEVATION	250 WWS	CURB RAMP	
HYDRO	Detectable Tile	100 GAS	Detectable Tile	
MTS		100 GAS		
100 GAS				

UNDERGROUND STRUCTURES	B.M. ELEV.
LOCATION OF UNDERGROUND STRUCTURES AS SHOWN ARE BASED ON THE BEST INFORMATION AVAILABLE. BUT NO GUARANTEE IS GIVEN THAT ALL EXISTING UTILITIES ARE SHOWN OR THAT THE GIVEN LOCATIONS ARE EXACT. CONFIRMATION OF EXISTENCE AND EXACT LOCATION OF ALL SERVICES MUST BE OBTAINED FROM THE INDIVIDUAL UTILITIES BEFORE PROCEEDING WITH CONSTRUCTION.	

TETRA TECH

DESIGNED BY: CF

REVIEWED BY: JT/DL/JNC

DRAWN BY: CF

APPROVED BY: JNC

SCALE: H = 1:250

V = 1:10

1 ISSUED FOR ADDENDUM 1 26.03.27 JNC

0 ISSUED FOR TENDER 26.03.17 JNC

NO. REVISIONS DATE BY

DATE 26.03.17

THE CITY OF WINNIPEG PUBLIC WORKS DEPARTMENT

ORIGINAL DRAWING REVISION "0" SEALED BY J.N. CRANG 26.03.17

2026 LOCAL STREET RENEWAL PROGRAM 26-R-03

ASPHALT REHABILITATION CRESCENT DR. (PEMBINA HWY TO STA 0+140)

CITY DRAWING NUMBER P-3599-1

SHEET OF 01 28

C001

CONSULTANT DRAWING NO. 704-INF.003048-01-DWG-C001

STREETS PROJECT ENGINEER

DATE