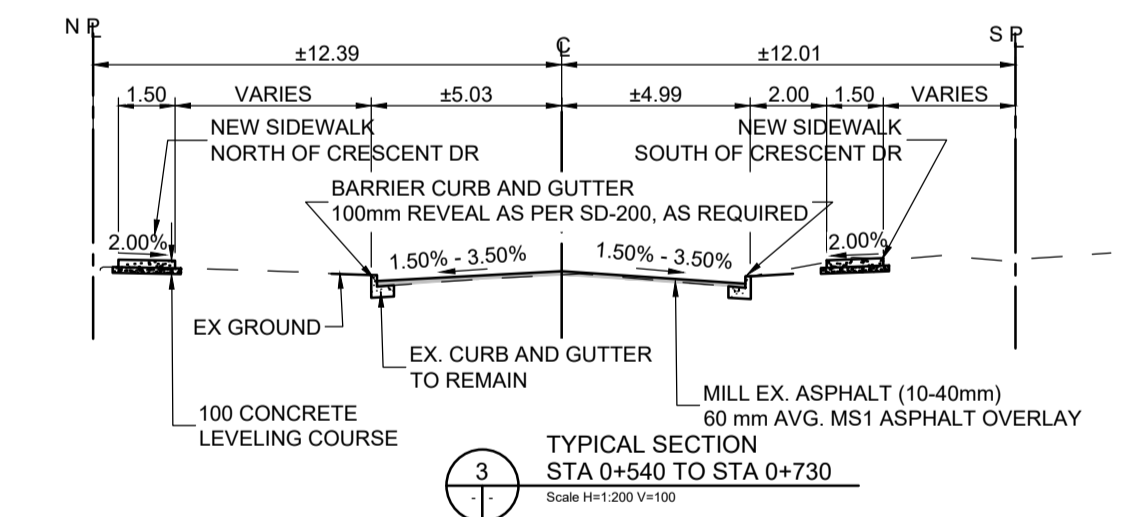
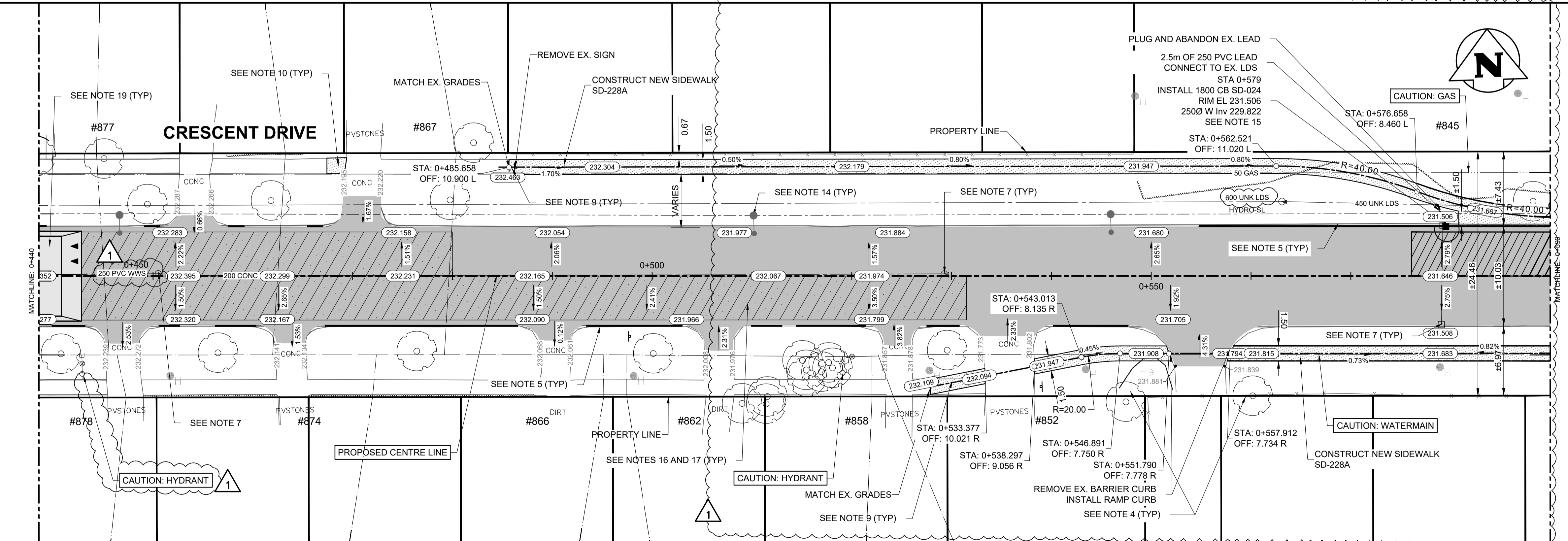


- CONSTRUCTION NOTES:**
- ALL WORK AND MATERIALS TO BE IN ACCORDANCE WITH LATEST REVISION OF THE CITY OF WINNIPEG STANDARD CONSTRUCTION SPECIFICATIONS.
 - LEGAL PLAN AND UNDERGROUND INFORMATION FROM CITY OF WINNIPEG LBIS.
 - LOCATION OF EXISTING UTILITIES/SERVICES TO BE CONFIRMED IN THE FIELD BY THE CONTRACTOR.
 - CONTRACTOR TO TAKE PRECAUTIONARY STEPS TO AVOID DAMAGE FROM CONSTRUCTION ACTIVITIES TO TREES WITHIN THE LIMITS OF CONSTRUCTION. REFER TO SPECIFICATIONS E5 AND E27.
 - RENEW BARRIER CURB AND GUTTER SD-200 WHERE SHOWN ON THE DRAWINGS AND AS DIRECTED BY THE CONTRACT ADMINISTRATOR.
 - CONSTRUCT MODIFIED BARRIER CURB AND GUTTER (100mm REVEAL)
 - ADJUST ALL WATER VALVES, MANHOLES, CATCH PITS, CURB INLETS, CATCH BASIN RIMS, AND WATER SHUT OFF VALVES TO NEW GRADES. MANHOLE AND CATCH PIT ISOLATIONS AS PER SD-220G/SD-220E, RESPECTIVELY.
 - ABANDON CATCH BASIN, CATCH PIT, AND CATCH INLET
 - SIDEWALK RENEWAL LOCATIONS TO BE FINALIZED IN THE FIELD BY THE CONTRACT ADMINISTRATOR. PROVIDE 13mm SIDEWALK EXPANSION JOINTS AS PER SD-228AA AS LAID OUT BY THE CONTRACT ADMINISTRATOR.
 - ALL PRIVATE SIDEWALKS TO BE ADJUSTED TO NEW SIDEWALK OR TOP OF CURB ELEVATIONS AS REQUIRED. SIDEWALKS TO BE REPLACED WITH LIKE MATERIALS.
 - CB LEADS AND CP LEADS TO BE INSTALLED TO INVERT ELEVATIONS AS SHOWN. ALL CB AND CP LEADS TO BE INSTALLED AT MIN 2.0% SLOPE AND AS DIRECTED BY CONTRACT ADMINISTRATOR.
 - LIMITS OF BOULEVARD GRADING TO BE FINALIZED IN THE FIELD BY THE CONTRACT ADMINISTRATOR.
 - CONTRACTOR TO CONFIRM LOCATION AND LIMITS OF SEWER REPAIRS AS INDICATED ON THE DRAWINGS BY PERFORMING VIDEO INSPECTION AND REVIEWING WITH THE CONTRACT ADMINISTRATOR PRIOR TO CONSTRUCTION.
 - LAMP STANDARDS, HYDRO POLES AND ANCHORS THAT REQUIRE TEMPORARY SUPPORT, REMOVAL OR REPLACEMENT, TO BE DONE AT THE EXPENSE OF THE CONTRACTOR, AS NECESSARY. REFER TO SPECIFICATION E30 AND E36.
 - COMPLETE CATCH BASIN/CATCH PIT CURB ISOLATIONS IN ACCORDANCE WITH SD-220E
 - COVER PARTIAL AND FULL DEPTH ASPHALT REPAIRS WITH PAVEMENT REPAIR FABRIC EXTENDING 150mm AROUND PERIMETER OF REPAIR AS PER E13.
 - CONSTRUCT PARTIAL/FULL DEPTH ASPHALT PAVEMENT REPAIR AS DETAILED IN SECTION 2
 - ADJUST PRECAST SIDEWALK BLOCKS AS DIRECTED BY THE CA.
 - CONSTRUCT SPEED TABLES AS PER DETAIL IN DWG 025 AND E34.
 - UPGRADE TRANSIT STOP.
 - ALL DIMENSIONS ARE TO BACK OF CURB
 - ALL PIPE UNDER EXISTING AND FUTURE PAVEMENT TO BE INSTALLED USING TRENCHLESS METHODS. WHERE NOT POSSIBLE, OPEN CUT WITH CLASS 2 BACKFILL.
 - ALL TRENCHES AND EXCAVATION FOR UNDER GROUND WORKS WITHIN 1 METRE OF A PAVED AREA INCLUDING SIDEWALKS SHALL BE CLASS 3 BACKFILL, (FLOODED, JETTED AND TAMPED) UNLESS OTHERWISE NOTED.
 - ALL BACKFILL UNDER BOULEVARD TO BE CLASS 4 UNLESS OTHERWISE NOTED.



EXISTING	LEGEND-PLAN	PROPOSED	EXISTING	LEGEND-PLAN	PROPOSED	EXISTING	LEGEND-PROFILE	PROPOSED
	HYDRANT			CONCRETE			WATERMAIN	
	VALVE			ASPHALT			LAND DRAINAGE SEWER	
	MANHOLE			SIDEWALK			WASTE WATER SEWER	
	CATCH BASIN			PAVING STONES			HYDRANT	
	CATCH PIT			PARTIAL DEPTH REPAIR			VALVE	
	WATERMAIN			FULL DEPTH REPAIR			PROFILE	
	LAND DRAINAGE SEWER			PROPERTY LINE			NORTH/WEST GUTTER	
	WASTE WATER SEWER			ELEVATION			SOUTH/EAST GUTTER	
	HYDRO			CURB RAMP			NORTH/WEST DITCH	
	M.T.S.			DETECTABLE TILE			SOUTH/EAST DITCH	
	GAS							

UNDERGROUND STRUCTURES

LOCATION OF UNDERGROUND STRUCTURES AS SHOWN ARE BASED ON THE BEST INFORMATION AVAILABLE. BUT NO GUARANTEE IS GIVEN THAT ALL EXISTING UTILITIES ARE SHOWN OR THAT THE GIVEN LOCATIONS ARE EXACT. CONFIRMATION OF EXISTENCE AND EXACT LOCATION OF ALL SERVICES MUST BE OBTAINED FROM THE INDIVIDUAL UTILITIES BEFORE PROCEEDING WITH CONSTRUCTION.

TETRA TECH

DESIGNED BY: CF
 DRAWN BY: CF
 REVIEWED BY: JT/DL/JNC
 APPROVED BY: JNC
 RELEASED FOR CONSTRUCTION

SCALE: H = 1:250
 V = 1:10

DATE: 26.03.17

THE CITY OF WINNIPEG PUBLIC WORKS DEPARTMENT

2026 LOCAL STREET RENEWAL PROGRAM
 26-R-03

ASPHALT REHABILITATION
 CRESCENT DR. (STA 0+440 TO STA 0+590)
 PLAN AND PROFILE

CITY DRAWING NUMBER: P-3599-4
 SHEET OF: 04 OF 28
 C004

ORIGINAL DRAWING REVISION "0" SEALED BY J.N. CRANG 26.03.17

CONSULTANT DRAWING NO. 704-INF.MB03048-01-DWG-C004

