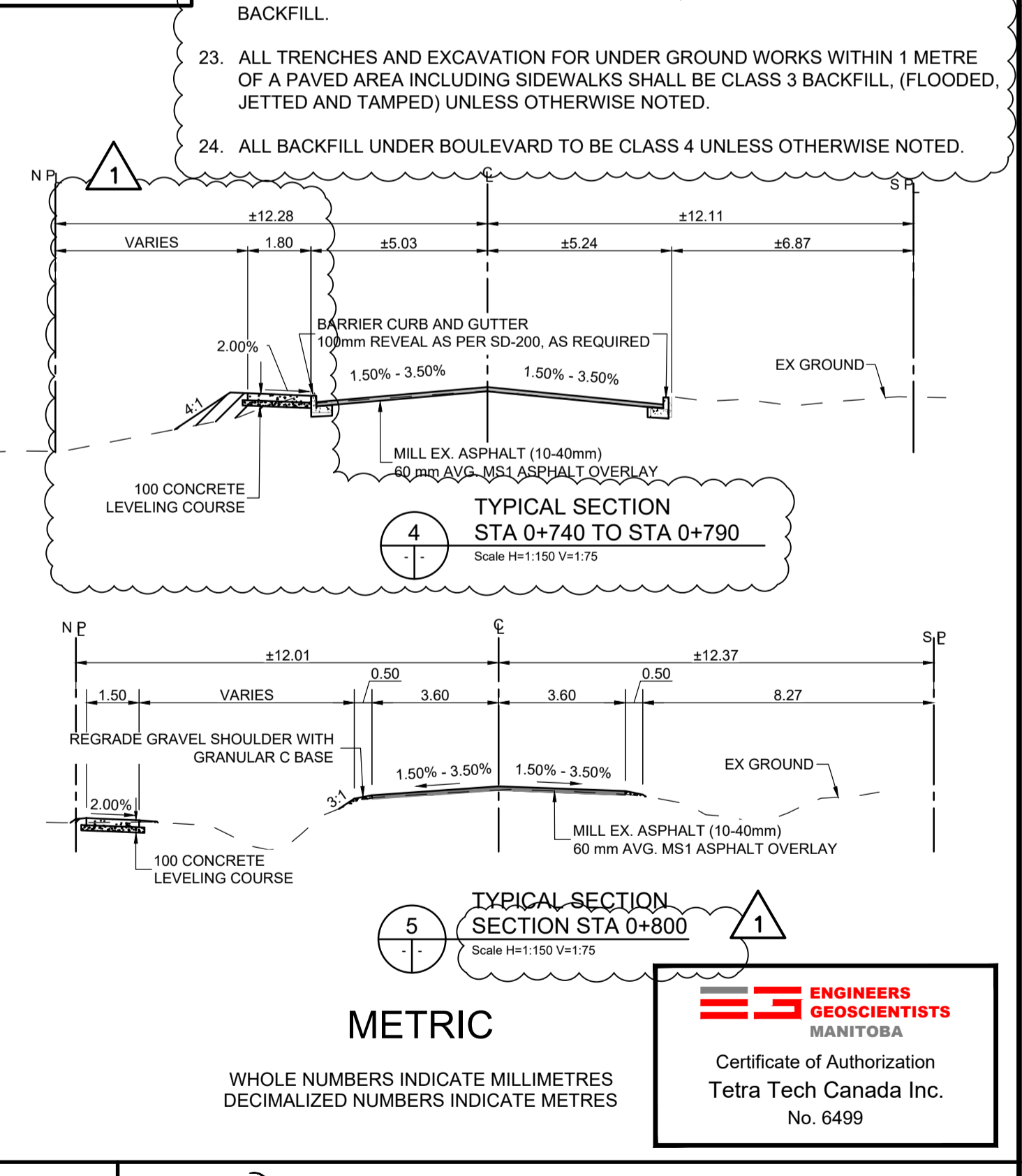
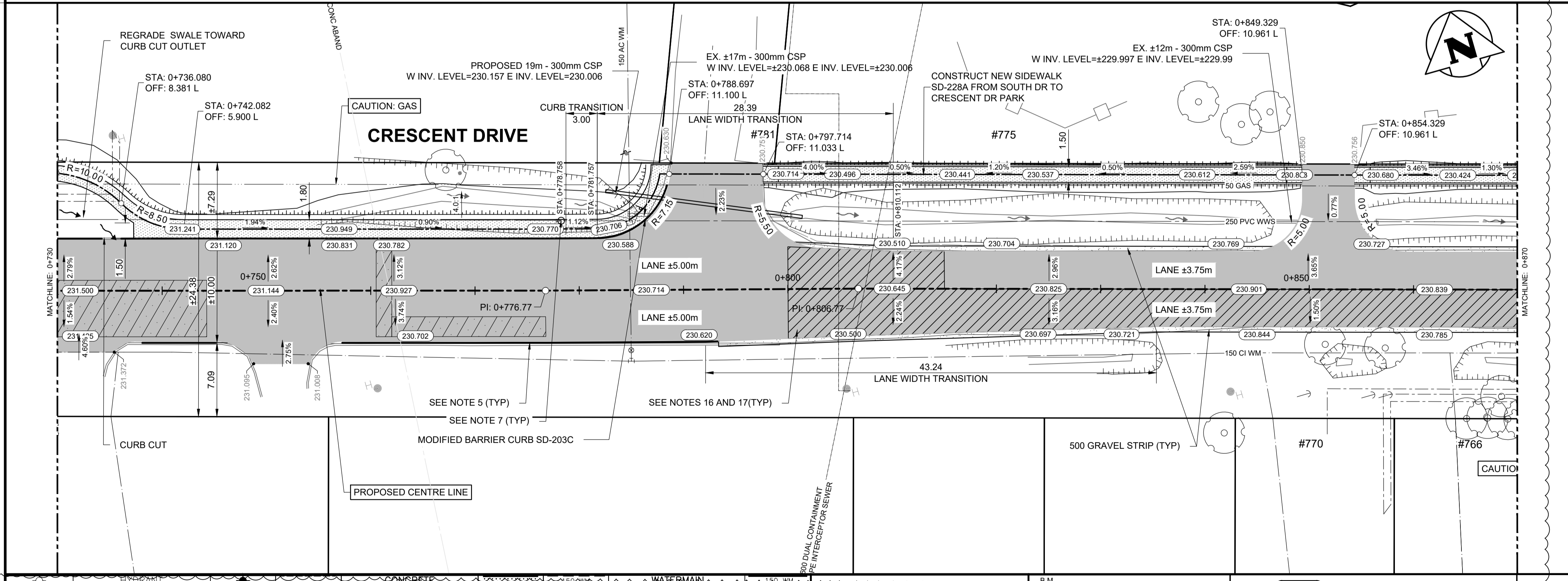


- CONSTRUCTION NOTES:**
- ALL WORK AND MATERIALS TO BE IN ACCORDANCE WITH LATEST REVISION OF THE CITY OF WINNIPEG STANDARD CONSTRUCTION SPECIFICATIONS.
 - LEGAL PLAN AND UNDERGROUND INFORMATION FROM CITY OF WINNIPEG LBIS.
 - LOCATION OF EXISTING UTILITIES/SERVICES TO BE CONFIRMED IN THE FIELD BY THE CONTRACTOR.
 - CONTRACTOR TO TAKE PRECAUTIONARY STEPS TO AVOID DAMAGE FROM CONSTRUCTION ACTIVITIES TO TREES WITHIN THE LIMITS OF CONSTRUCTION. REFER TO SPECIFICATIONS E5 AND E27.
 - RENEW BARRIER CURB AND GUTTER SD-200 WHERE SHOWN ON THE DRAWINGS AND AS DIRECTED BY THE CONTRACT ADMINISTRATOR.
 - CONSTRUCT MODIFIED BARRIER CURB AND GUTTER (100mm REVEAL)
 - ADJUST ALL WATER VALVES, MANHOLES, CATCH PITS, CURB INLETS, CATCH BASIN RIMS, AND WATER SHUT OFF VALVES TO NEW GRADES. MANHOLE AND CATCH PIT ISOLATIONS AS PER SD-220G/SD-220E, RESPECTIVELY.
 - ABANDON CATCH BASIN, CATCH PIT, AND CATCH INLET
 - SIDEWALK RENEWAL LOCATIONS TO BE FINALIZED IN THE FIELD BY THE CONTRACT ADMINISTRATOR. PROVIDE 13mm SIDEWALK EXPANSION JOINTS AS PER SD-228AA AS LAID OUT BY THE CONTRACT ADMINISTRATOR.
 - ALL PRIVATE SIDEWALKS TO BE ADJUSTED TO NEW SIDEWALK OR TOP OF CURB ELEVATIONS AS REQUIRED. SIDEWALKS TO BE REPLACED WITH LIKE MATERIALS.
 - CB LEADS AND CP LEADS TO BE INSTALLED TO INVERT ELEVATIONS AS SHOWN. ALL CB AND CP LEADS TO BE INSTALLED AT MIN 2.0% SLOPE AND AS DIRECTED BY CONTRACT ADMINISTRATOR.
 - LIMITS OF BOULEVARD GRADING TO BE FINALIZED IN THE FIELD BY THE CONTRACT ADMINISTRATOR.
 - CONTRACTOR TO CONFIRM LOCATION AND LIMITS OF SEWER REPAIRS AS INDICATED ON THE DRAWINGS BY PERFORMING VIDEO INSPECTION AND REVIEWING WITH THE CONTRACT ADMINISTRATOR PRIOR TO CONSTRUCTION.
 - LAMP STANDARDS, HYDRO POLES AND ANCHORS THAT REQUIRE TEMPORARY SUPPORT, REMOVAL OR REPLACEMENT, TO BE DONE AT THE EXPENSE OF THE CONTRACTOR, AS NECESSARY. REFER TO SPECIFICATION E30 AND E36.
 - COMPLETE CATCH BASIN/CATCH PIT CURB ISOLATIONS IN ACCORDANCE WITH SD-220E
 - COVER PARTIAL AND FULL DEPTH ASPHALT REPAIRS WITH PAVEMENT REPAIR FABRIC EXTENDING 150mm AROUND PERIMETER OF REPAIR AS PER E13.
 - CONSTRUCT PARTIAL/FULL DEPTH ASPHALT PAVEMENT REPAIR AS DETAILED IN SECTION 2
 - ADJUST PRECAST SIDEWALK BLOCKS AS DIRECTED BY THE CA.
 - CONSTRUCT SPEED TABLES AS PER DETAIL IN DWG 025 AND E34.
 - UPGRADE TRANSIT STOP.
 - ALL DIMENSIONS ARE TO BACK OF CURB.
 - ALL PIPE UNDER EXISTING AND FUTURE PAVEMENT TO BE INSTALLED USING TRENCHLESS METHODS. WHERE NOT POSSIBLE, OPEN CUT WITH CLASS 2 BACKFILL.
 - ALL TRENCHES AND EXCAVATION FOR UNDER GROUND WORKS WITHIN 1 METRE OF A PAVED AREA INCLUDING SIDEWALKS SHALL BE CLASS 3 BACKFILL, (FLOODED, JETTED AND TAMPED) UNLESS OTHERWISE NOTED.
 - ALL BACKFILL UNDER BOULEVARD TO BE CLASS 4 UNLESS OTHERWISE NOTED.



EXISTING	LEGEND-PLAN	PROPOSED	EXISTING	LEGEND-PLAN	PROPOSED	EXISTING	LEGEND-PROFILE	PROPOSED
○	HYDRANT	●	○	CONCRETE	○	○	LAND DRAINAGE SEWER	○
○	MANHOLE	●	○	ASPHALT	○	○	WASTE WATER SEWER	○
□	CATCH BASIN	●	○	SIDEWALK	○	○	HYDRANT	○
□	CATCH PIT	●	○	PAVING STONES	○	○	VALVE	○
□	WATERMAIN	●	○	PARTIAL DEPTH REPAIR	○	○	PROPERTY LINE	○
□	LAND DRAINAGE SEWER	●	○	FULL DEPTH REPAIR	○	○	ELEVATION	○
□	WASTE WATER SEWER	●	○	PROPERTY LINE	○	○	CURB RAMP	○
□	HYDRO	●	○	ELEVATION	○	○	DETECTABLE TILE	○
□	M.T.S.	●	○	CURB RAMP	○	○		
□	GAS	●	○	DETECTABLE TILE	○	○		

TETRA TECH

DESIGNED BY: CF
DRAWN BY: CF

REVIEWED BY: JT/DL/JNC
APPROVED BY: JNC

SCALE: H = 1:250
V = 1:10

RELEASED FOR CONSTRUCTION

STREETS PROJECT ENGINEER

DATE: 26.03.17

THE CITY OF WINNIPEG PUBLIC WORKS DEPARTMENT

ORIGINAL DRAWING REVISION "0" SEALED BY J.N. CRANG 26.03.17

2026 LOCAL STREET RENEWAL PROGRAM 26-R-03

ASPHALT REHABILITATION CRESCENT DR. (STA 0+730 TO STA 0+870) PLAN AND PROFILE

CITY DRAWING NUMBER: P-3599-6
SHEET OF: 06 OF 28
C006

CONSULTANT DRAWING NO. 704-INF-MB03048-01-DWG-C006

ENGINEERS GEOSCIENTISTS MANITOBA
Certificate of Authorization Tetra Tech Canada Inc. No. 6499