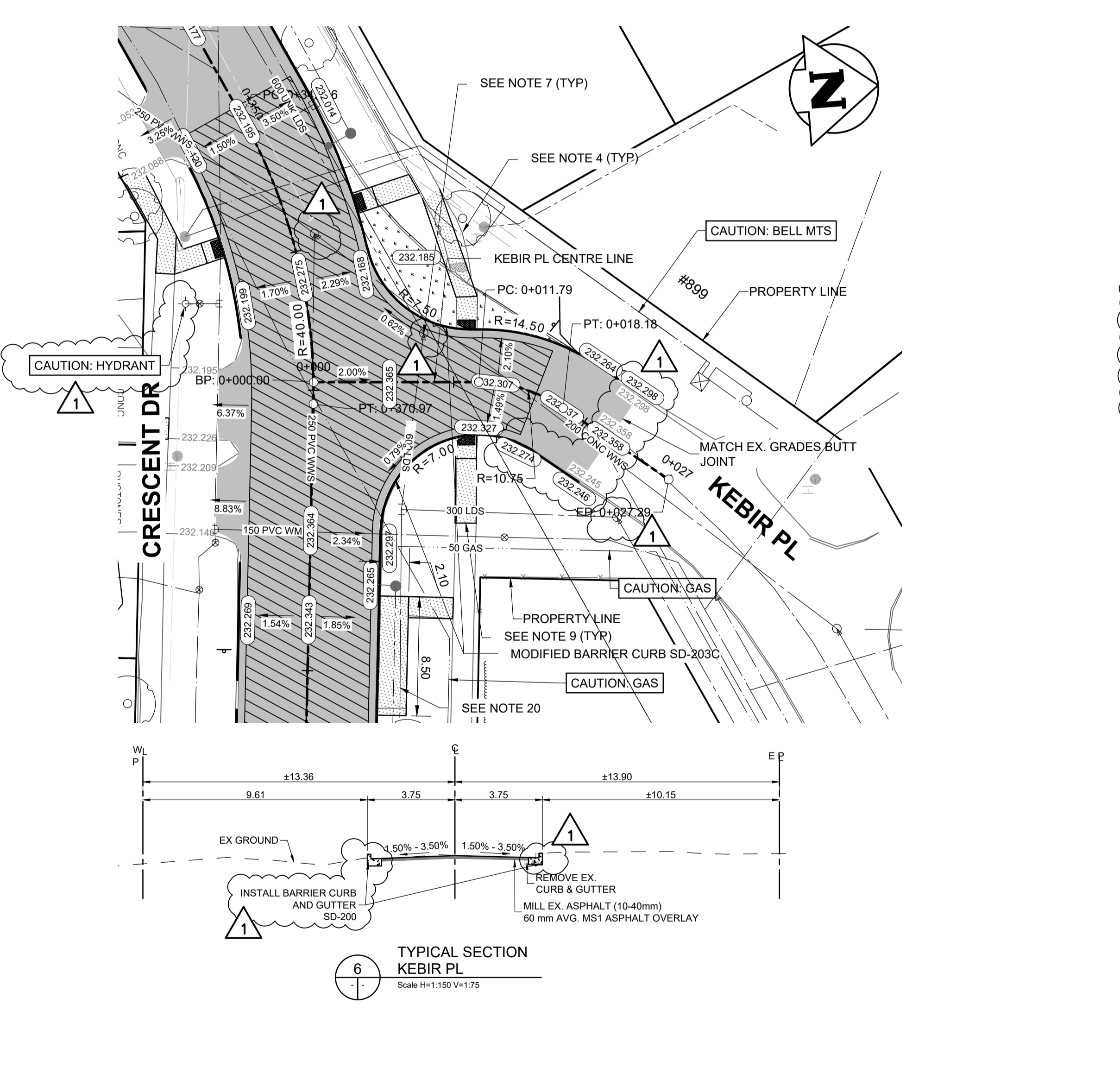
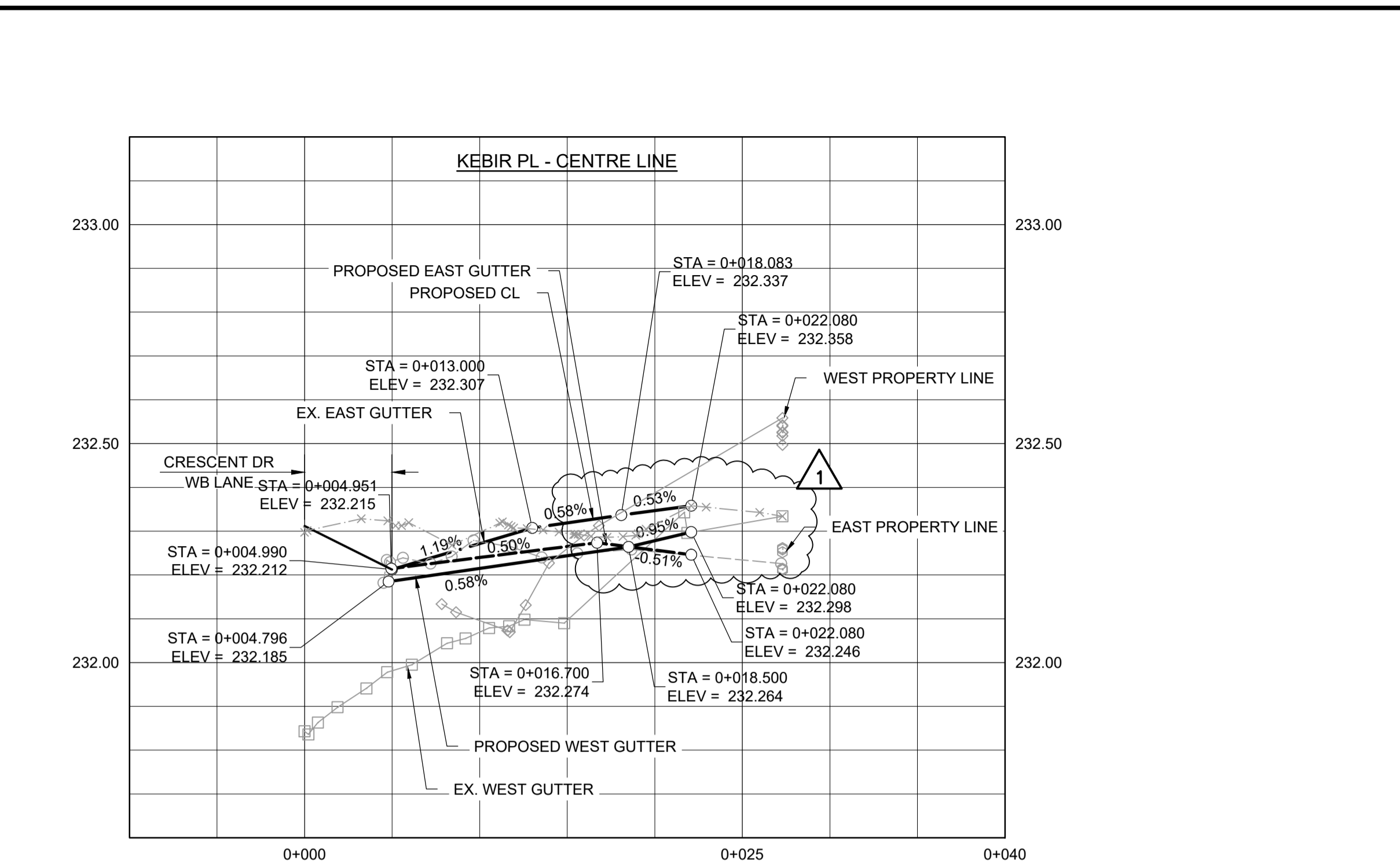
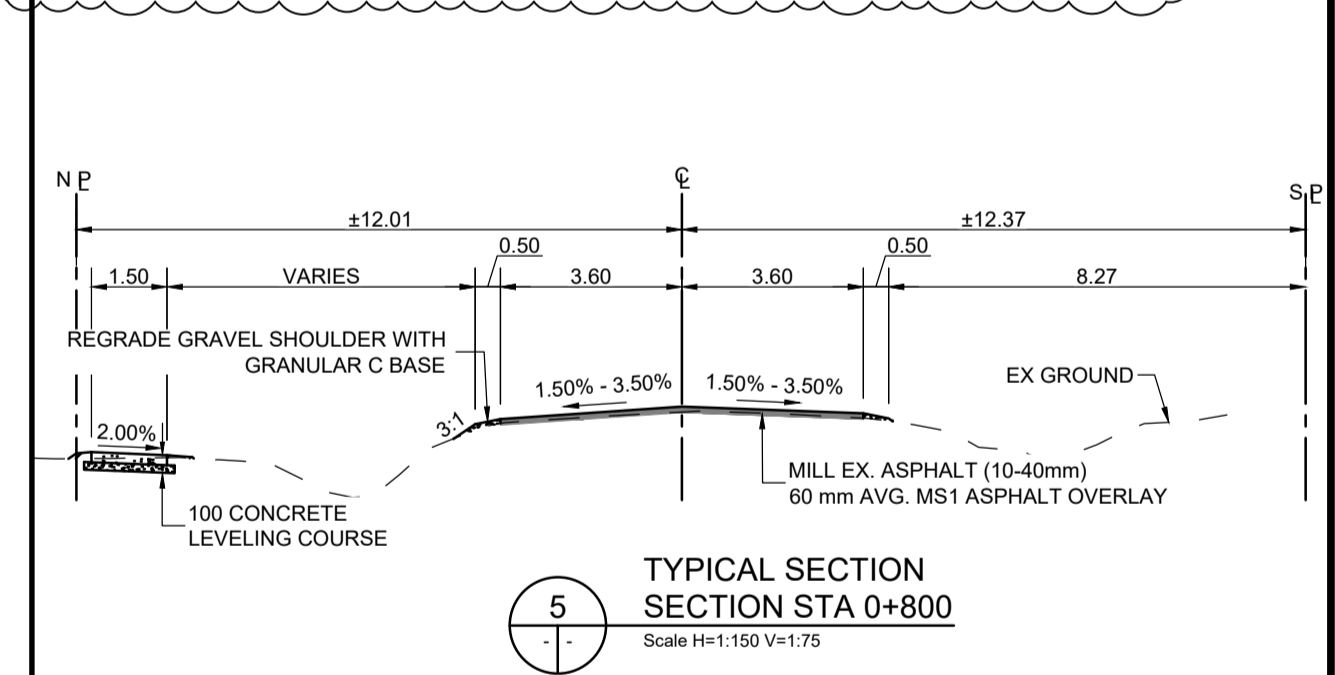


○	HYDRANT	◆	CONCRETE	▨	150 WM	—	WATERMAIN	▨	150 WM
⊗	VALVE	▨	ASPHALT	▨	300 LDS	—	LAND DRAINAGE SEWER	▨	300 LDS
○	MANHOLE	▨	SIDEWALK	▨	250 WWS	—	WASTE WATER SEWER	▨	250 WWS
□	CATCH BASIN	▨	PAVING STONES	▨	+	—	HYDRANT	▨	+
▽	CATCH PIT	▨	PARTIAL DEPTH REPAIR	▨	⊗	—	VALVE	▨	⊗
▨	WATERMAIN	▨	FULL DEPTH REPAIR	▨	—	—	PROPERTY LINE	▨	—
▨	300 LDS	▨	PROPERTY LINE	▨	—	—	NORTH/WEST GUTTER	▨	—
▨	250 WWS	▨	ELEVATION	▨	—	—	SOUTH/EAST GUTTER	▨	—
▨	HYDRO	▨	CURB RAMP	▨	—	—	NORTH/WEST DITCH	▨	—
▨	M.T.S.	▨	DETECTABLE TILE	▨	—	—	SOUTH/EAST DITCH	▨	—
▨	100 GAS	▨		▨	—	—		▨	—
EXISTING	LEGEND-PLAN	PROPOSED	EXISTING	LEGEND-PLAN	PROPOSED	EXISTING	LEGEND-PROFILE	PROPOSED	



UNDERGROUND STRUCTURES		B.M. ELEV.		TETRA TECH		ORIGINAL DRAWING REVISION "0" SEALED BY J.N. CRANG 26.03.17	
LOCATION OF UNDERGROUND STRUCTURES AS SHOWN ARE BASED ON THE BEST INFORMATION AVAILABLE. BUT NO GUARANTEE IS GIVEN THAT ALL EXISTING UTILITIES ARE SHOWN OR THAT THE GIVEN LOCATIONS ARE EXACT. CONFIRMATION OF EXISTENCE AND EXACT LOCATION OF ALL SERVICES MUST BE OBTAINED FROM THE INDIVIDUAL UTILITIES BEFORE PROCEEDING WITH CONSTRUCTION.		1 ISSUED FOR ADDENDUM 1 26.03.27 JNC		DESIGNED BY CF		REVIEWED BY JT/DL/JNC	
		0 ISSUED FOR TENDER 26.03.17 JNC		DRAWN BY CF		APPROVED BY JNC	
		NO REVISIONS		SCALE: H = 1:250 V = 1:10		RELEASED FOR CONSTRUCTION	
		DATE BY		DATE 26.03.17		STREETS PROJECT ENGINEER	

- CONSTRUCTION NOTES:
- ALL WORK AND MATERIALS TO BE IN ACCORDANCE WITH LATEST REVISION OF THE CITY OF WINNIPEG STANDARD CONSTRUCTION SPECIFICATIONS.
 - LEGAL PLAN AND UNDERGROUND INFORMATION FROM CITY OF WINNIPEG LBIS.
 - LOCATION OF EXISTING UTILITIES/SERVICES TO BE CONFIRMED IN THE FIELD BY THE CONTRACTOR.
 - CONTRACTOR TO TAKE PRECAUTIONARY STEPS TO AVOID DAMAGE FROM CONSTRUCTION ACTIVITIES TO TREES WITHIN THE LIMITS OF CONSTRUCTION. REFER TO SPECIFICATIONS E5 AND E27.
 - RENEW BARRIER CURB AND GUTTER SD-200 WHERE SHOWN ON THE DRAWINGS AND AS DIRECTED BY THE CONTRACT ADMINISTRATOR.
 - CONSTRUCT MODIFIED BARRIER CURB AND GUTTER (100mm REVEAL)
 - ADJUST ALL WATER VALVES, MANHOLES, CATCH PITS, CURB INLETS, CATCH BASIN RIMS, AND WATER SHUT OFF VALVES TO NEW GRADES. MANHOLE AND CATCH PIT ISOLATIONS AS PER SD-220G/SD-220E, RESPECTIVELY.
 - ABANDON CATCH BASIN, CATCH PIT, AND CATCH INLET
 - SIDEWALK RENEWAL LOCATIONS TO BE FINALIZED IN THE FIELD BY THE CONTRACT ADMINISTRATOR. PROVIDE 13mm SIDEWALK EXPANSION JOINTS AS PER SD-228AA AS LAID OUT BY THE CONTRACT ADMINISTRATOR.
 - ALL PRIVATE SIDEWALKS TO BE ADJUSTED TO NEW SIDEWALK OR TOP OF CURB ELEVATIONS AS REQUIRED. SIDEWALKS TO BE REPLACED WITH LIKE MATERIALS.
 - CB LEADS AND CP LEADS TO BE INSTALLED TO INVERT ELEVATIONS AS SHOWN. ALL CB AND CP LEADS TO BE INSTALLED AT MIN 2.0% SLOPE AND AS DIRECTED BY CONTRACT ADMINISTRATOR.
 - LIMITS OF BOULEVARD GRADING TO BE FINALIZED IN THE FIELD BY THE CONTRACT ADMINISTRATOR.
 - CONTRACTOR TO CONFIRM LOCATION AND LIMITS OF SEWER REPAIRS AS INDICATED ON THE DRAWINGS BY PERFORMING VIDEO INSPECTION AND REVIEWING WITH THE CONTRACT ADMINISTRATOR PRIOR TO CONSTRUCTION.
 - LAMP STANDARDS, HYDRO POLES AND ANCHORS THAT REQUIRE TEMPORARY SUPPORT, REMOVAL OR REPLACEMENT, TO BE DONE AT THE EXPENSE OF THE CONTRACTOR, AS NECESSARY. REFER TO SPECIFICATION E30 AND E36.
 - COMPLETE CATCH BASIN/CATCH PIT CURB ISOLATIONS IN ACCORDANCE WITH SD-220E
 - COVER PARTIAL AND FULL DEPTH ASPHALT REPAIRS WITH PAVEMENT REPAIR FABRIC EXTENDING 150mm AROUND PERIMETER OF REPAIR AS PER E13.
 - CONSTRUCT PARTIAL/FULL DEPTH ASPHALT PAVEMENT REPAIR AS DETAILED IN SECTION 2
 - ADJUST PRECAST SIDEWALK BLOCKS AS DIRECTED BY THE CA.
 - CONSTRUCT SPEED TABLES AS PER DETAIL IN DWG 025 and E34.
 - UPGRADE TRANSIT STOP.
 - ALL DIMENSIONS ARE TO BACK OF CURB.
 - ALL PIPE UNDER EXISTING AND FUTURE PAVEMENT TO BE INSTALLED USING TRENCHLESS METHODS. WHERE NOT POSSIBLE, OPEN CUT WITH CLASS 2 BACKFILL.
 - ALL TRENCHES AND EXCAVATION FOR UNDER GROUND WORKS WITHIN 1 METRE OF A PAVED AREA INCLUDING SIDEWALKS SHALL BE CLASS 3 BACKFILL, (FLOODED, JETTED AND TAMPED) UNLESS OTHERWISE NOTED.
 - ALL BACKFILL UNDER BOULEVARD TO BE CLASS 4 UNLESS OTHERWISE NOTED.



METRIC
WHOLE NUMBERS INDICATE MILLIMETRES
DECIMALIZED NUMBERS INDICATE METRES

ENGINEERS
GEOSCIENTISTS
MANITOBA

Certificate of Authorization
Tetra Tech Canada Inc.
No. 6499

THE CITY OF WINNIPEG
PUBLIC WORKS DEPARTMENT

2026 LOCAL STREET RENEWAL PROGRAM
26-R-03

CITY DRAWING NUMBER
P-3599-7
SHEET OF 07 28

ASPHALT REHABILITATION
CRESCENT DR. (STA 0+870 TO CRESCENT PARK)
PLAN AND PROFILE

C007