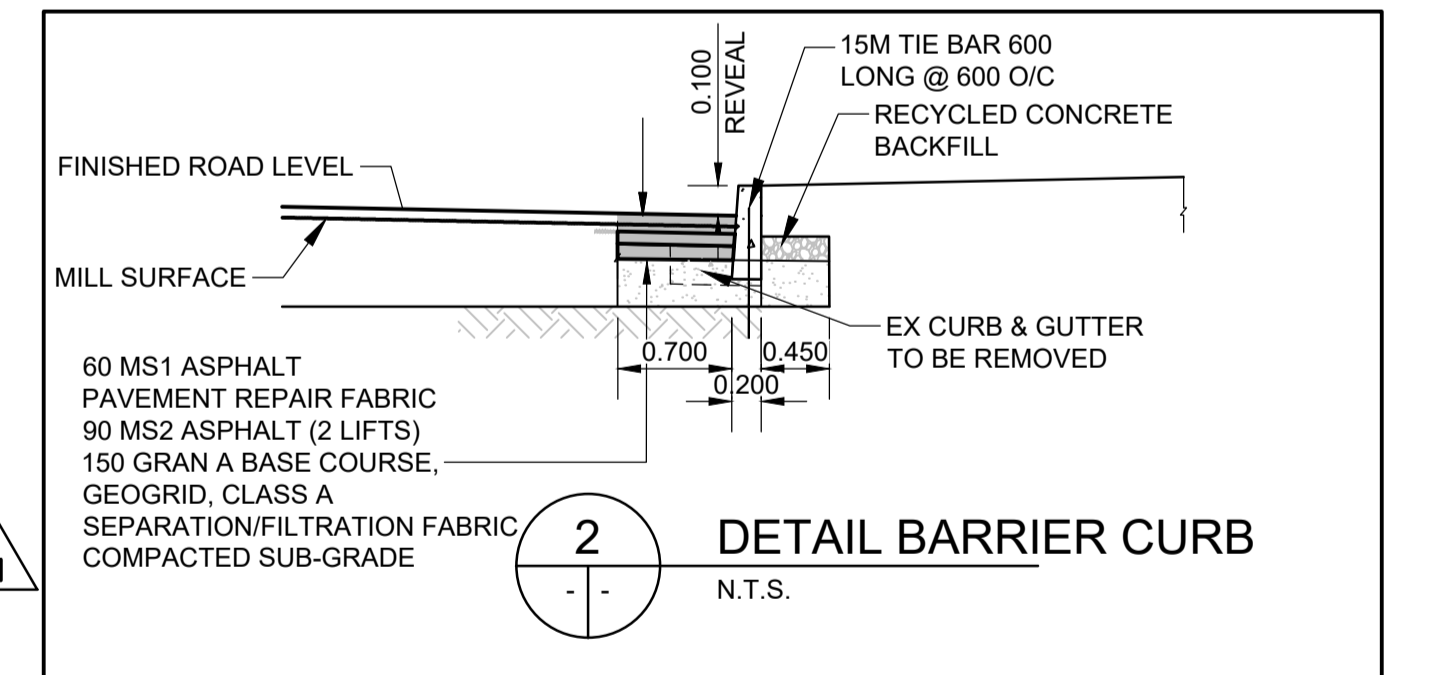
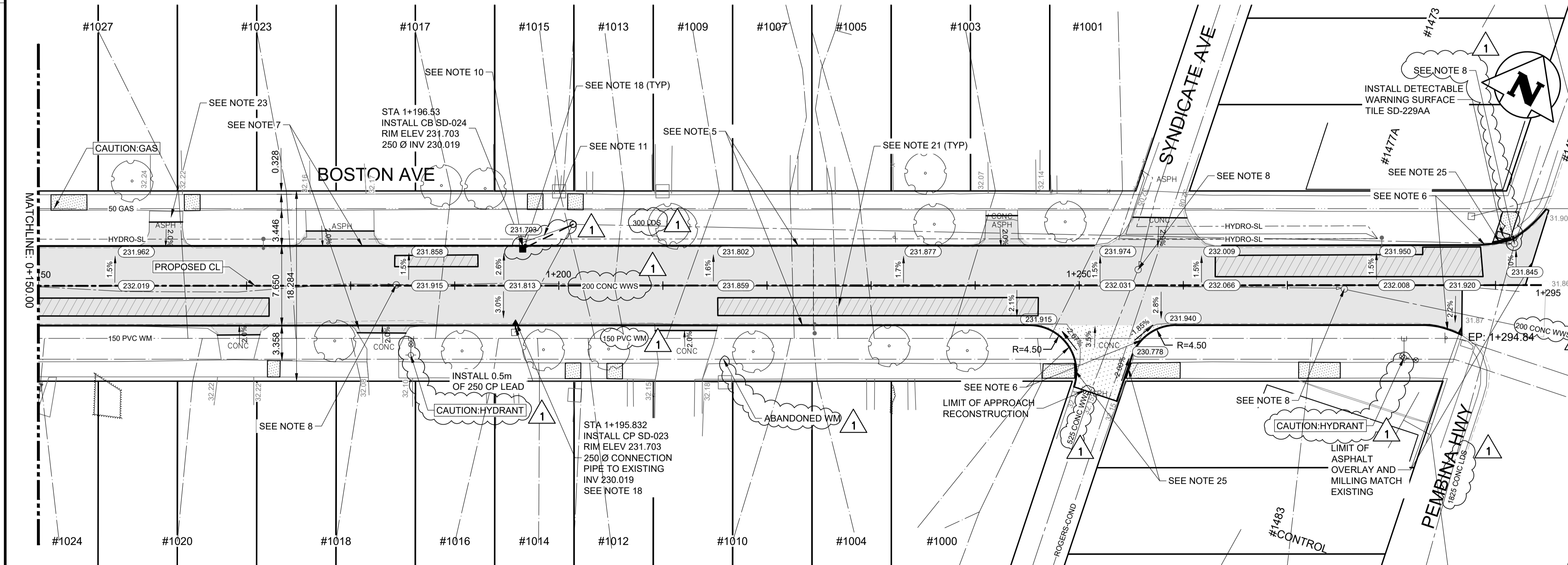
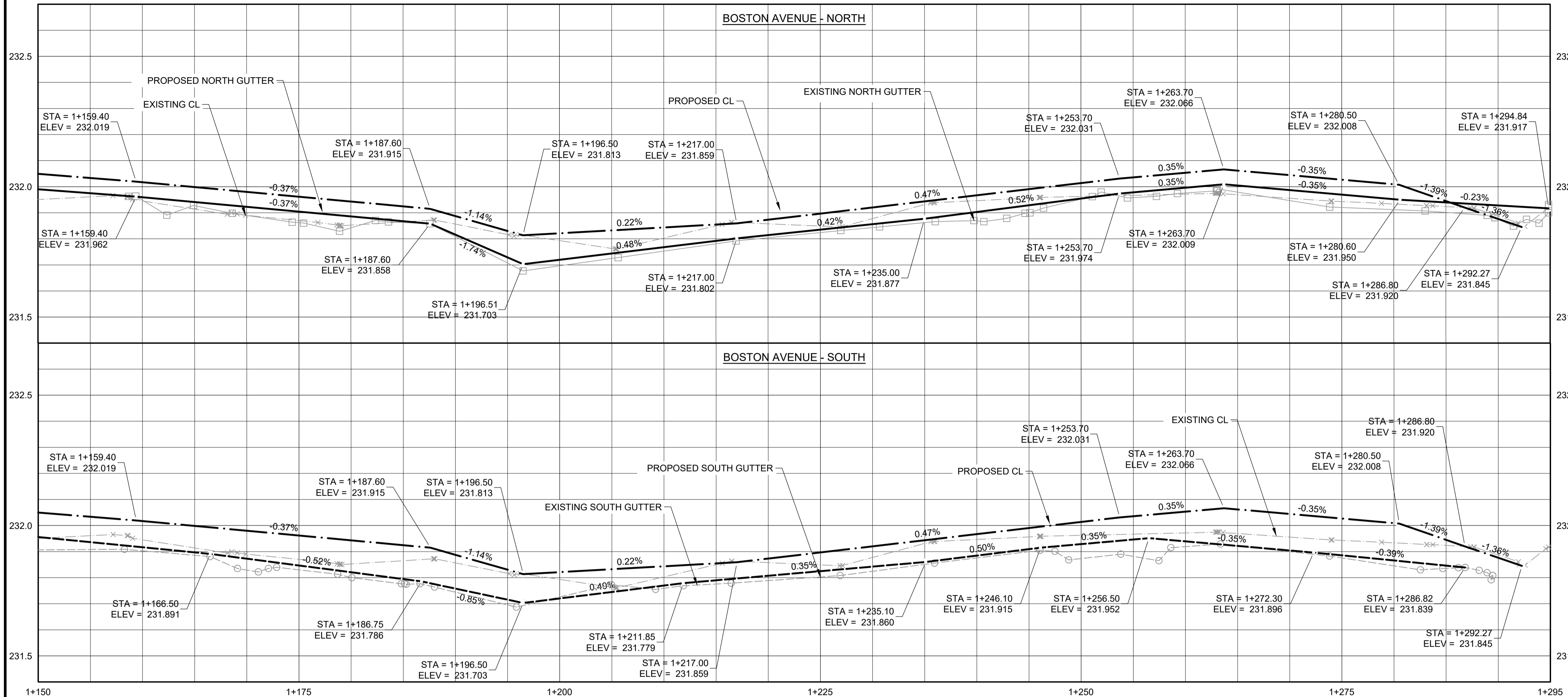


CONSTRUCTION NOTES:

1. ALL WORK AND MATERIALS TO BE IN ACCORDANCE WITH LATEST REVISION OF THE CITY OF WINNIPEG STANDARD CONSTRUCTION SPECIFICATIONS.
2. LEGAL PLAN AND UNDERGROUND INFORMATION FROM CITY OF WINNIPEG LBIS.
3. LOCATION OF EXISTING UTILITIES/SERVICES TO BE CONFIRMED IN THE FIELD BY THE CONTRACTOR.
4. CONTRACTOR TO TAKE PRECAUTIONARY STEPS TO AVOID DAMAGE FROM CONSTRUCTION ACTIVITIES TO TREES WITHIN THE LIMITS OF CONSTRUCTION. REFER TO SPECIFICATION E.5 - PROTECTION OF EXISTING TREES.
5. REMOVE EXISTING CURB AND GUTTER. CONSTRUCT BARRIER CURB FOR ASPHALT PAVEMENTS (100mm REVEAL) SD-200A AS PER DETAIL 2 AND IN ACCORDANCE WITH E14
6. CONSTRUCT MODIFIED BARRIER CURB SD-203B (150mm REVEAL)
7. CONSTRUCT 40mm LIP CURB FOR ASPHALT PAVEMENTS SD-202F IN ACCORDANCE WITH E14
8. ADJUST ALL WATER VALVES, MANHOLE, CATCH BASINS, CATCH PITS AND WATER SHUT OFF VALVES TO NEW GRADES.
9. INSTALL DETECTABLE WARNING SURFACE TILE AS PER SD-229AB
10. REMOVE CURB INLET AND CB
11. PROVIDE 250 PVC CB SEWER SERVICE PIPE AND CONNECT TO EXISTING PIPE
12. CONSTRUCT SIDEWALK CONNECTIONS TO PRIVATE APPROACHES AS PER SD-228A TO LIMITS AS SHOWN.
13. ALL PRIVATE SIDEWALKS TO BE ADJUSTED TO NEW SIDEWALK OR TOP OF CURB ELEVATIONS AS REQUIRED. SIDEWALKS TO BE REPLACED WITH LIKE MATERIALS.
14. CB LEADS AND CP LEADS TO BE INSTALLED TO INVERT ELEVATIONS AS SHOWN. ALL CB AND CP LEADS TO BE INSTALLED AT MIN 2.0% SLOPE AND AS DIRECTED BY CONTRACT ADMINISTRATOR.
15. LIMITS OF BOULEVARD GRADING TO BE FINALIZED IN THE FIELD BY THE CONTRACT ADMINISTRATOR.
16. CONTRACTOR TO CONFIRM LOCATION AND LIMITS OF SEWER REPAIRS AS INDICATED ON THE DRAWINGS BY PERFORMING VIDEO INSPECTION AND REVIEWING WITH THE CONTRACT ADMINISTRATOR PRIOR TO CONSTRUCTION.
17. LAMP STANDARDS, HYDRO POLES AND ANCHORS THAT REQUIRE TEMPORARY SUPPORT, REMOVAL OR REPLACEMENT, TO BE DONE AT THE EXPENSE OF THE CONTRACTOR, AS NECESSARY. REFER TO SPECIFICATION E32-WORKING AROUND MANITOBA HYDRO POLES.
18. COMPLETE CATCH BASIN/CATCH PIT CURB ISOLATIONS IN ACCORDANCE WITH SD-220D
19. PLACE PAVEMENT REPAIR FABRIC AS PER E13.
20. SIDEWALK RENEWAL LOCATIONS TO BE FINALIZED IN THE FIELD BY THE CONTRACTOR ADMINISTRATOR. PROVIDE 13mm EXPANSION JOINTS AS PER SD-228AA AND AS LAID OUT BY THE CONTRACTOR.
21. CONSTRUCT FULL DEPTH ASPHALT PAVEMENT REPAIR AS DETAILED IN SECTION 1
22. ADJUST PRECAST SIDEWALK BLOCKS AS DIRECTED BY THE CA
23. PLACE ASPHALT PAVEMENT TRANSITION
24. CONSTRUCT 200mm REINFORCED CONCRETE PAVEMENT (72h) WITH 150mm BASE COURSE A, GEOGRID CLASS A AND SEPARATION/FILTRATION FABRIC
25. CONSTRUCT CURB RAMP FOR ASPHALT PAVEMENTS SD-229FA
26. APPROACH TO BE REMOVED
27. ALL DIMENSIONS ARE TO BACK OF CURB.



EXISTING	LEGEND-PLAN	PROPOSED	EXISTING	LEGEND-PLAN	PROPOSED	EXISTING	LEGEND-PROFILE	PROPOSED
	HYDRANT			CONCRETE			WATERMAIN	
	VALVE			ASPHALT-REHABILITATION			LAND DRAINAGE SEWER	
	MANHOLE			SIDEWALK			WASTE WATER SEWER	
	CATCH BASIN			PAVING STONES			HYDRANT	
	CATCH PIT			FULL DEPTH ASP REPAIR			VALVE	
	WATERMAIN			PROPERTY LINE			Q PROFILE	
	LAND DRAINAGE SEWER			ELEVATION			NORTH/WEST GUTTER	
	WASTE WATER SEWER			CURB RAMP			SOUTH/EAST GUTTER	
	HYDRO			LS/HP			NORTH/WEST PROPERTY LINE	
	M.T.S.			DETECTABLE TILE			SOUTH/EAST PROPERTY LINE	
	GAS							

NO.	REVISIONS	DATE	BY
1	ISSUED FOR ADDENDUM 1	26.03.27	JNC
0	ISSUE FOR TENDER	26.03.17	JNC

TETRA TECH

DESIGNED BY: MA
DRAWN BY: MA

REVIEWED BY: JT/DL/JC
APPROVED BY: JNC

SCALE: H = 1:250
V = 10

DATE: 2026.03.17

THE CITY OF WINNIPEG PUBLIC WORKS DEPARTMENT

2026 LOCAL STREET RENEWAL PROGRAM
26-R-03

ORIGINAL DRAWING REVISION "0" SEALED BY J.N. CRANG 26.03.17

CONSULTANT DRAWING NO. 704-INF.MBI03048-01-DWG-C009

CITY DRAWING NUMBER P-3599-9
SHEET OF 09 28

ASPHALT REHABILITATION
BOSTON AVENUE (STA 0+150 TO PEMBINA HWY)
PLAN AND PROFILE

C009

ENGINEERS GEOSCIENTISTS MANITOBA

Certificate of Authorization
Tetra Tech Canada Inc.
No. 6499

METRIC
WHOLE NUMBERS INDICATE MILLIMETRES
DECIMALIZED NUMBERS INDICATE METRES

TENDER #203-2026