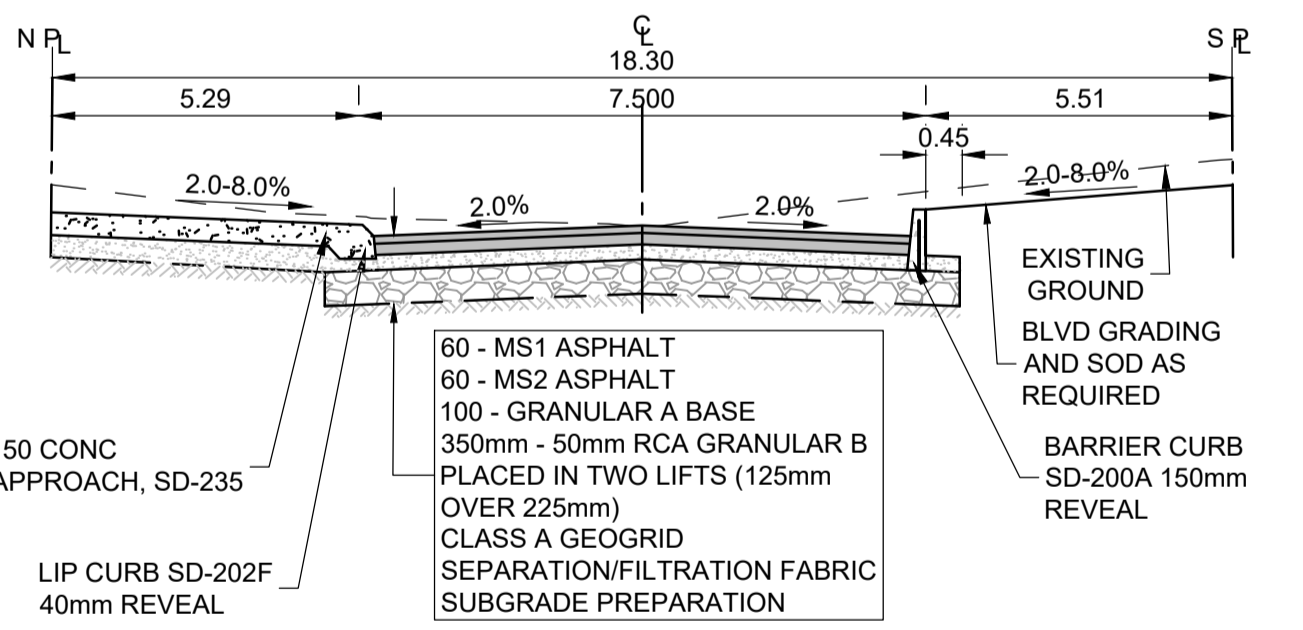
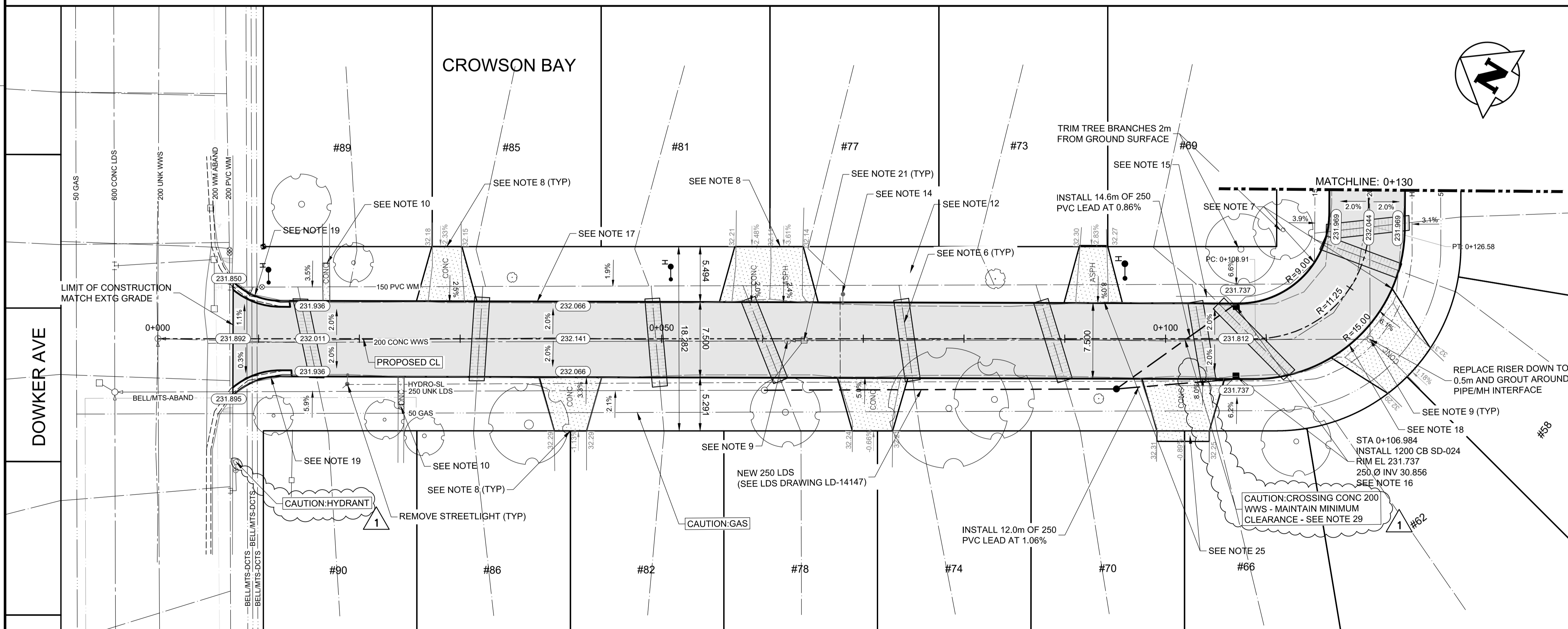


- CONSTRUCTION NOTES:**
- ALL WORK AND MATERIALS TO BE IN ACCORDANCE WITH LATEST REVISION OF THE CITY OF WINNIPEG STANDARD CONSTRUCTION SPECIFICATIONS.
 - LEGAL PLAN AND UNDERGROUND INFORMATION FROM CITY OF WINNIPEG LBIS.
 - LOCATION OF EXISTING UTILITIES/SERVICES TO BE CONFIRMED IN THE FIELD BY THE CONTRACTOR.
 - CONTRACTOR TO TAKE PRECAUTIONARY STEPS TO AVOID DAMAGE FROM CONSTRUCTION ACTIVITIES TO TREES WITHIN THE LIMITS OF CONSTRUCTION. REFER TO SPECIFICATION E.5 - PROTECTION OF EXISTING TREES.
 - ADJUST EXISTING WATER VALVES AND WATER SERVICE CURB STOPS TO GRADE. VALVES TO BE OPERATED BY CITY OF WINNIPEG CREWS.
 - WATER SERVICES TO BE INSULATED AS PER SD-018 WITH 100mm THICK x 2700mm WIDE TOP OF INSULATION OR RENEWED/INSULATED AS INDICATED ON PLAN IN ACCORDANCE TO CW-2110.
 - CONSTRUCT MODIFIED BARRIER CURB SD-203C. TO BE USED AT ALL INTERSECTION RADII.
 - CONSTRUCT 150mm REINFORCED CONCRETE APPROACH AS PER SD-235 WITH 1.5m TAPERS AND 40mm LIP CURB SD-202F AND AS DIRECTED BY THE CONTRACT ADMINISTRATOR.
 - ADJUST MANHOLE AND CATCH BASIN RIMS TO NEW GRADES. REMOVE AND REPLACE ALL MANHOLE FRAMES AND COVERS IN PAVEMENT. REPAIR/REPLACE BENCHING AND RISERS AS DIRECTED BY THE CONTRACT ADMINISTRATOR.
 - CONSTRUCT SIDEWALK CONNECTIONS TO PRIVATE APPROACHES AS PER SD-228A TO LIMITS AS SHOWN. ALL PRIVATE SIDEWALKS TO BE ADJUSTED TO NEW SIDEWALK OR TOP OF CURB ELEVATIONS AS REQUIRED. SIDEWALKS TO BE REPLACED WITH LIKE MATERIALS.
 - CB LEADS AND CP LEADS TO BE INSTALLED TO INVERT ELEVATIONS AS SHOWN. ALL CB AND CP LEADS TO BE INSTALLED AT MIN 2.0% SLOPE AND AS DIRECTED BY CONTRACT ADMINISTRATOR.
 - LIMITS OF BOULEVARD GRADING TO BE FINALIZED IN THE FIELD BY THE CONTRACT ADMINISTRATOR.
 - CONTRACTOR TO CONFIRM LOCATION AND LIMITS OF SEWER REPAIRS AS INDICATED ON THE DRAWINGS BY PERFORMING VIDEO INSPECTION AND REVIEWING WITH THE CONTRACT ADMINISTRATOR PRIOR TO CONSTRUCTION.
 - LAMP STANDARDS, HYDRO POLES AND ANCHORS THAT REQUIRE TEMPORARY SUPPORT, REMOVAL OR REPLACEMENT, TO BE DONE AT THE EXPENSE OF THE CONTRACTOR, AS NECESSARY. REFER TO SPECIFICATION E30-WORKING AROUND MANITOBA HYDRO POLES.
 - INSTALL 6.0m OF 150mm SUBDRAIN TO CATCH BASINS IN BOTH DIRECTIONS WITH END CAPS PARALLEL TO ROADWAY AS PER SD-245 OR AS NOTED.
 - COMPLETE CATCH BASIN/CATCH PIT CURB ISOLATIONS IN ACCORDANCE WITH SD-220D DETAILS.
 - BARRIER CURB TO BE CONSTRUCTED AS PER SD-200A, WITH 150mm REVEAL AND AS DIRECTED BY THE CONTRACT ADMINISTRATOR.
 - CONSTRUCT 40mm LIP CURB WITH INTEGRAL APPROACH SD-202F FOR ASPHALT PAVEMENTS
 - RENEW MODIFIED BARRIER CURB AND GUTTER
 - MILL ASPHALT PAVEMENT. PLACE 60mm MS1 TO NEW GRADES
 - REMOVE CB AND ABANDON LEAD PIPE
 - ADJUST PRECAST CONCRETE BLOCKS
 - REGRADE EXISTING INTERLOCKING PAVING STONE. REMOVE EXISTING BASE AND REQUIRED SUBGRADE TO PROVIDE FOR 150mm BASE COURSE
 - INSTALL RAMP CURB FOR ASPHALT PAVEMENT 8-12mm REVEAL AS PER SD-229F
 - DRIVEWAY TO BE FORMED IN SEGMENTS TO FORM A VERTICAL CURVE AS PER CONTRACT ADMINISTRATOR
 - ALL PIPE UNDER EXISTING AND FUTURE PAVEMENT TO BE INSTALLED USING TRENCHLESS METHODS. WHERE NOT POSSIBLE, OPEN CUT WITH CLASS 2 BACKFILL.
 - ALL TRENCHES AND EXCAVATION FOR UNDER GROUND WORKS WITHIN 1 METRE OF A PAVED AREA INCLUDING SIDEWALKS SHALL BE CLASS 3 BACKFILL, (FLOODED, JETTED AND TAMPED) UNLESS OTHERWISE NOTED.
 - ALL BACKFILL UNDER BOULEVARD TO BE CLASS 4 UNLESS OTHERWISE NOTED.
 - FOR WATERMAIN/SEWERMAIN CLEARANCE MINIMUMS, REFER TO DRAWING C025
 - ALL DIMENSIONS ARE TO BACK OF CURB



SECTION TYPICAL
Scale H=1:100 V=1:50

ENGINEERS GEOSCIENTISTS
MANITOBA
Certificate of Authorization
Tetra Tech Canada Inc.
No. 6499
TENDER #203-2026

EXISTING	LEGEND-PLAN	PROPOSED	EXISTING	LEGEND-PLAN	PROPOSED	EXISTING	LEGEND-PROFILE	PROPOSED
	HYDRANT			CONCRETE			WATERMAIN	
	VALVE			ASPHALT-RECONSTRUCTION			LAND DRAINAGE SEWER	
	MANHOLE			ASPHALT-REHABILITATION			WASTE WATER SEWER	
	CATCH BASIN			SIDEWALK			HYDRANT	
	CATCH PIT			PAVING STONES			VALVE	
	WATERMAIN			PROPERTY LINE			NORTH/WEST GUTTER	
	LAND DRAINAGE SEWER			ELEVATION			SOUTH/EAST GUTTER	
	WASTE WATER SEWER			CURB RAMP			NORTH/WEST PROPERTY LINE	
	HYDRO			LSI/HP			SOUTH/EAST PROPERTY LINE	
	M.T.S.							
	GAS							

NO.	REVISIONS	DATE	BY
1	ISSUED FOR ADDENDUM 1	26.03.27	JNC
0	ISSUED FOR TENDER	26.03.17	JNC

TETRA TECH

DESIGNED BY: MA
DRAWN BY: MA

REVIEWED BY: JT/DL/JC
APPROVED BY: JNC

SCALE: H = 1:250
V = 10

DATE: 2026.03.17

ORIGINAL DRAWING REVISION "0" SEALED BY J.N. CRANG 26.03.17

THE CITY OF WINNIPEG
PUBLIC WORKS DEPARTMENT

2026 LOCAL STREET RENEWAL PROGRAM
26-R-03

CITY DRAWING NUMBER: P-3599-10
SHEET OF: 10 OF 28

ASPHALT RECONSTRUCTION
CROWSON BAY (DOWKER AVE TO STA 0+130)
PLAN AND PROFILE

C010