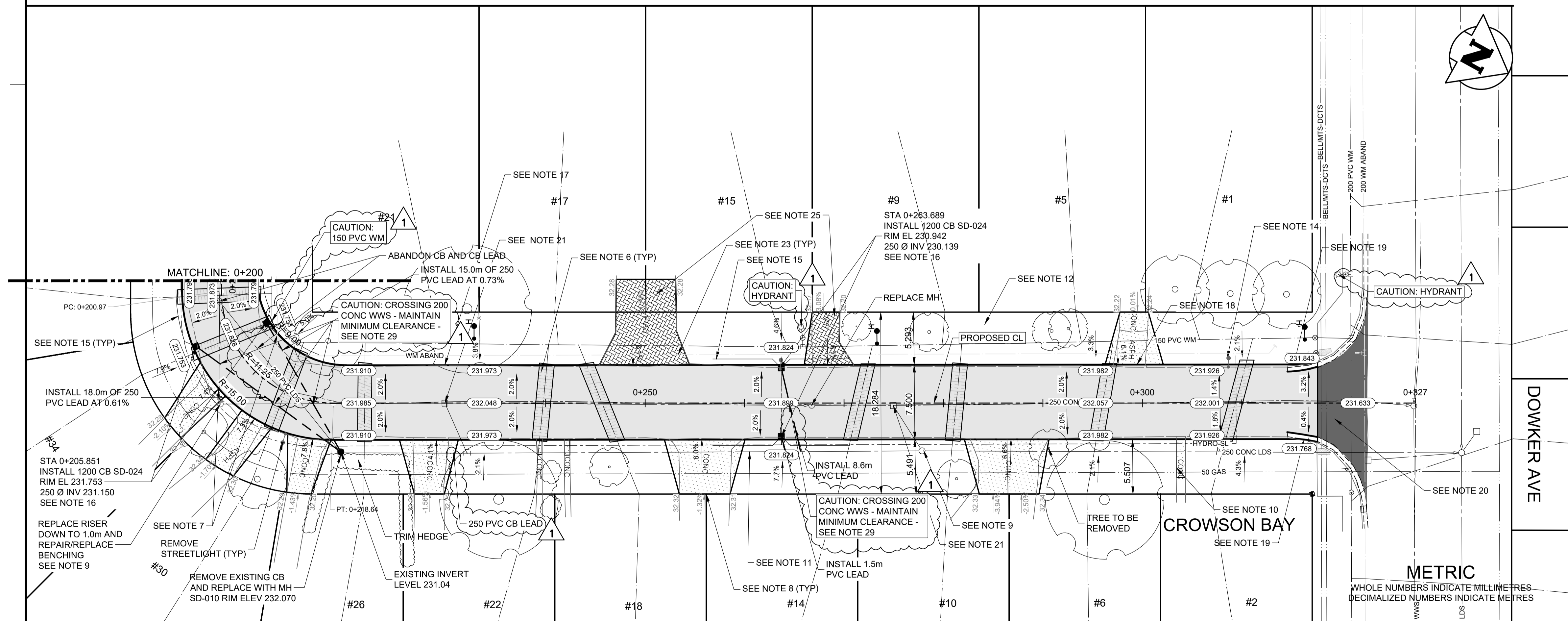


CONSTRUCTION NOTES:

- ALL WORK AND MATERIALS TO BE IN ACCORDANCE WITH LATEST REVISION OF THE CITY OF WINNIPEG STANDARD CONSTRUCTION SPECIFICATIONS.
- LEGAL PLAN AND UNDERGROUND INFORMATION FROM CITY OF WINNIPEG LBIS.
- LOCATION OF EXISTING UTILITIES/SERVICES TO BE CONFIRMED IN THE FIELD BY THE CONTRACTOR.
- CONTRACTOR TO TAKE PRECAUTIONARY STEPS TO AVOID DAMAGE FROM CONSTRUCTION ACTIVITIES TO TREES WITHIN THE LIMITS OF CONSTRUCTION. REFER TO SPECIFICATION E.5 - PROTECTION OF EXISTING TREES.
- ADJUST EXISTING WATER VALVES AND WATER SERVICE CURB STOPS TO GRADE. VALVES TO BE OPERATED BY CITY OF WINNIPEG CREWS.
- WATER SERVICES TO BE INSULATED AS PER SD-018 WITH 100mm THICK x 2700mm WIDE TOP OF INSULATION OR RENEWED/INSULATED AS INDICATED ON PLAN IN ACCORDANCE TO CW-2110.
- CONSTRUCT MODIFIED BARRIER CURB SD-203C. TO BE USED AT ALL INTERSECTION RADII.
- CONSTRUCT 150mm REINFORCED CONCRETE APPROACH AS PER SD-235 WITH 1.5m TAPERS AND 40mm LIP CURB SD-202F AND AS DIRECTED BY THE CONTRACT ADMINISTRATOR.
- ADJUST MANHOLE AND CATCH BASIN RIMS TO NEW GRADES. REMOVE AND REPLACE ALL MANHOLE FRAMES AND COVERS IN PAVEMENT. REPAIR/REPLACE BENCHING AND RISERS AS DIRECTED BY THE CONTRACT ADMINISTRATOR.
- CONSTRUCT SIDEWALK CONNECTIONS TO PRIVATE APPROACHES AS PER SD-228A TO LIMITS AS SHOWN. ALL PRIVATE SIDEWALKS TO BE ADJUSTED TO NEW SIDEWALK OR TOP OF CURB ELEVATIONS AS REQUIRED. SIDEWALKS TO BE REPLACED WITH LIKE MATERIALS.
- CB LEADS AND CP LEADS TO BE INSTALLED TO INVERT ELEVATIONS AS SHOWN. ALL CB AND CP LEADS TO BE INSTALLED AT MIN 2.0% SLOPE AND AS DIRECTED BY CONTRACT ADMINISTRATOR.
- LIMITS OF BOULEVARD GRADING TO BE FINALIZED IN THE FIELD BY THE CONTRACT ADMINISTRATOR.
- CONTRACTOR TO CONFIRM LOCATION AND LIMITS OF SEWER REPAIRS AS INDICATED ON THE DRAWINGS BY PERFORMING VIDEO INSPECTION AND REVIEWING WITH THE CONTRACT ADMINISTRATOR PRIOR TO CONSTRUCTION.
- LAMP STANDARDS, HYDRO POLES AND ANCHORS THAT REQUIRE TEMPORARY SUPPORT, REMOVAL OR REPLACEMENT, TO BE DONE AT THE EXPENSE OF THE CONTRACTOR, AS NECESSARY. REFER TO SPECIFICATION E30-WORKING AROUND MANITOBA HYDRO POLES.
- INSTALL 6.0 m OF 150 mm SUBDRAIN TO CATCH BASINS IN BOTH DIRECTIONS WITH END CAPS PARALLEL TO ROADWAY AS PER SD-245 OR AS NOTED.
- COMPLETE CATCH BASIN/CATCH PIT CURB ISOLATIONS IN ACCORDANCE WITH SD-220D DETAILS.
- BARRIER CURB TO BE CONSTRUCTED AS PER SD-200A, WITH 150mm REVEAL AND AS DIRECTED BY THE CONTRACT ADMINISTRATOR.
- CONSTRUCT 40mm LIP CURB WITH INTEGRAL APPROACH SD-202F FOR ASPHALT PAVEMENTS
- RENEW MODIFIED BARRIER CURB AND GUTTER
- MILL ASPHALT PAVEMENT, PLACE 60mm MS1 TO NEW GRADES
- REMOVE CB AND ABANDON LEAD PIPE
- ADJUST PRECAST CONCRETE BLOCKS
- REGRADE EXISTING INTERLOCKING PAVING STONE. REMOVE EXISTING BASE AND REQUIRED SUBGRADE TO PROVIDE FOR 150mm BASE COURSE
- INSTALL RAMP CURB FOR ASPHALT PAVEMENT 8-12mm REVEAL AS PER SD-229F
- DRIVEWAY TO BE FORMED IN SEGMENTS TO FORM A VERTICAL CURVE AS PER CONTRACT ADMINISTRATOR
- ALL PIPE UNDER EXISTING AND FUTURE PAVEMENT TO BE INSTALLED USING TRENCHLESS METHODS. WHERE NOT POSSIBLE, OPEN CUT WITH CLASS 2 BACKFILL.
- ALL TRENCHES AND EXCAVATION FOR UNDER GROUND WORKS WITHIN 1 METRE OF A PAVED AREA INCLUDING SIDEWALKS SHALL BE CLASS 3 BACKFILL, (FLOODED, JETTED AND TAMPED) UNLESS OTHERWISE NOTED.
- ALL BACKFILL UNDER BOULEVARD TO BE CLASS 4 UNLESS OTHERWISE NOTED.
- FOR WATERMAIN/SEWERMAIN CLEARANCE MINIMUMS, REFER TO DRAWING C025
- ALL DIMENSIONS ARE TO BACK OF CURB



**ENGINEERS
GEOSCIENTISTS
MANITOBA**

Certificate of Authorization
Tetra Tech Canada Inc.
No. 6499

TENDER #203-2026

EXISTING	LEGEND-PLAN	PROPOSED	EXISTING	LEGEND-PLAN	PROPOSED	EXISTING	LEGEND-PROFILE	PROPOSED
	HYDRANT			CONCRETE			WATERMAIN	
	VALVE			ASPHALT-RECONSTRUCTION			LAND DRAINAGE SEWER	
	MANHOLE			ASPHALT-REHABILITATION			WASTE WATER SEWER	
	CATCH BASIN			SIDEWALK			HYDRANT	
	CATCH PIT			PAVING STONES			VALVE	
	WATERMAIN			PROPERTY LINE			Q PROFILE	
	LAND DRAINAGE SEWER			ELEVATION			NORTH/WEST GUTTER	
	WASTE WATER SEWER			CURB RAMP			SOUTH/EAST GUTTER	
	HYDRO			LSI/HP			NORTH/WEST PROPERTY LINE	
	M.T.S.						SOUTH/EAST PROPERTY LINE	
	GAS							

UNDERGROUND STRUCTURES

LOCATION OF UNDERGROUND STRUCTURES AS SHOWN ARE BASED ON THE BEST INFORMATION AVAILABLE. BUT NO GUARANTEE IS GIVEN THAT ALL EXISTING UTILITIES ARE SHOWN OR THAT THE GIVEN LOCATIONS ARE EXACT. CONFIRMATION OF EXISTENCE AND EXACT LOCATION OF ALL SERVICES MUST BE OBTAINED FROM THE INDIVIDUAL UTILITIES BEFORE PROCEEDING WITH CONSTRUCTION.

B.M. ELEV.	NO.	REVISIONS	DATE	BY
	1	ISSUED FOR ADDENDUM 1	26.03.27	JNC
	0	ISSUED FOR TENDER	26.03.17	JNC

TETRA TECH

DESIGNED BY: MA
DRAWN BY: MA

REVIEWED BY: JT/DL/JC
APPROVED BY: JNC

SCALE: H = 1:250
V = 10

DATE: 2026.03.17

ORIGINAL DRAWING REVISION "0" SEALED BY J.N. CRANG 26.03.17

CONSULTANT DRAWING NO. 704-INF-MB03049-01-DWG-C012

**THE CITY OF WINNIPEG
PUBLIC WORKS DEPARTMENT**

2026 LOCAL STREET RENEWAL PROGRAM
26-R-03

CITY DRAWING NUMBER: P-3599-12
SHEET OF: 12 OF 28

ASPHALT RECONSTRUCTION
CROWSON BAY (STA 0+200 TO DOWKER AVE)
PLAN AND PROFILE

C012