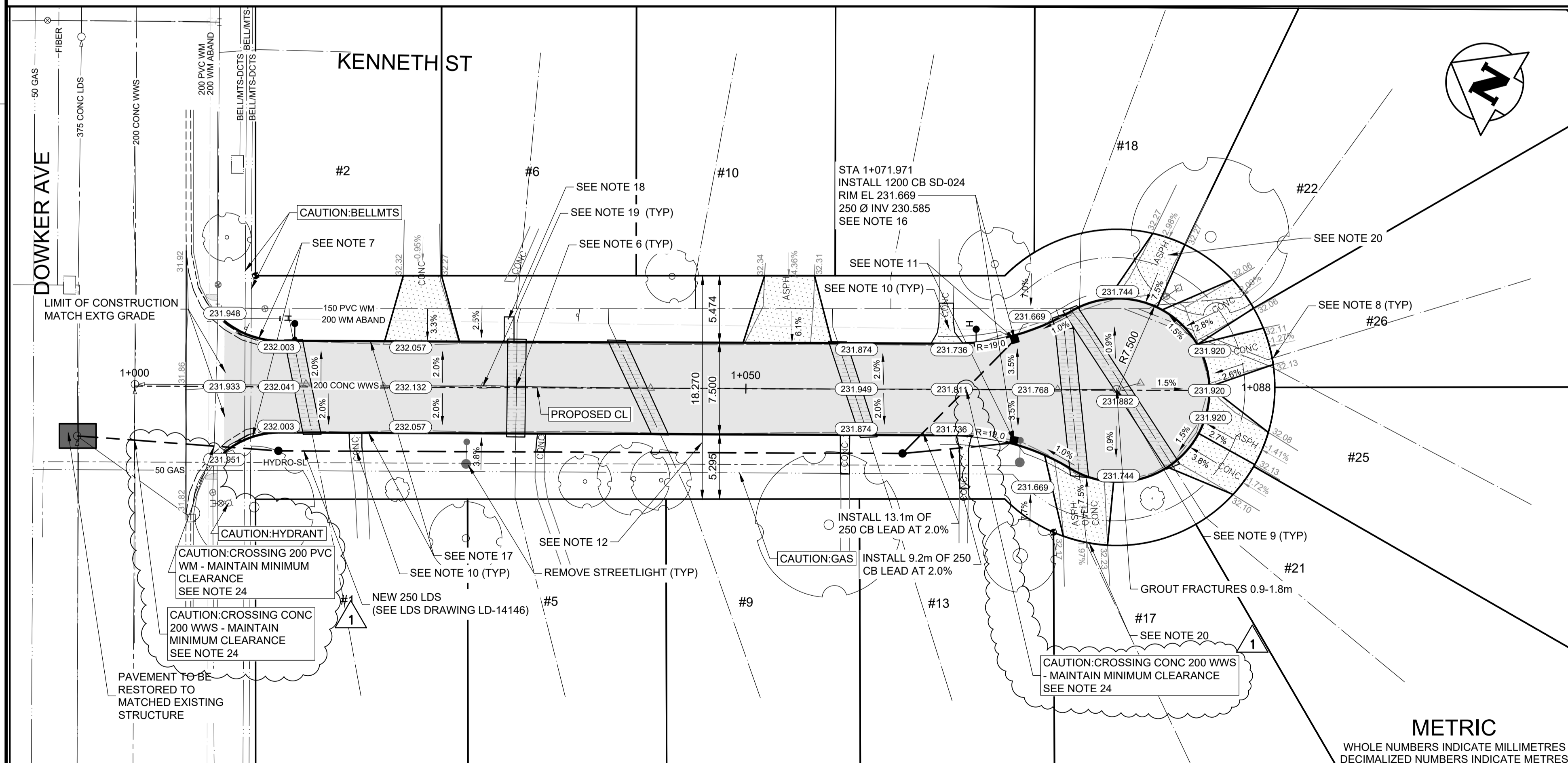
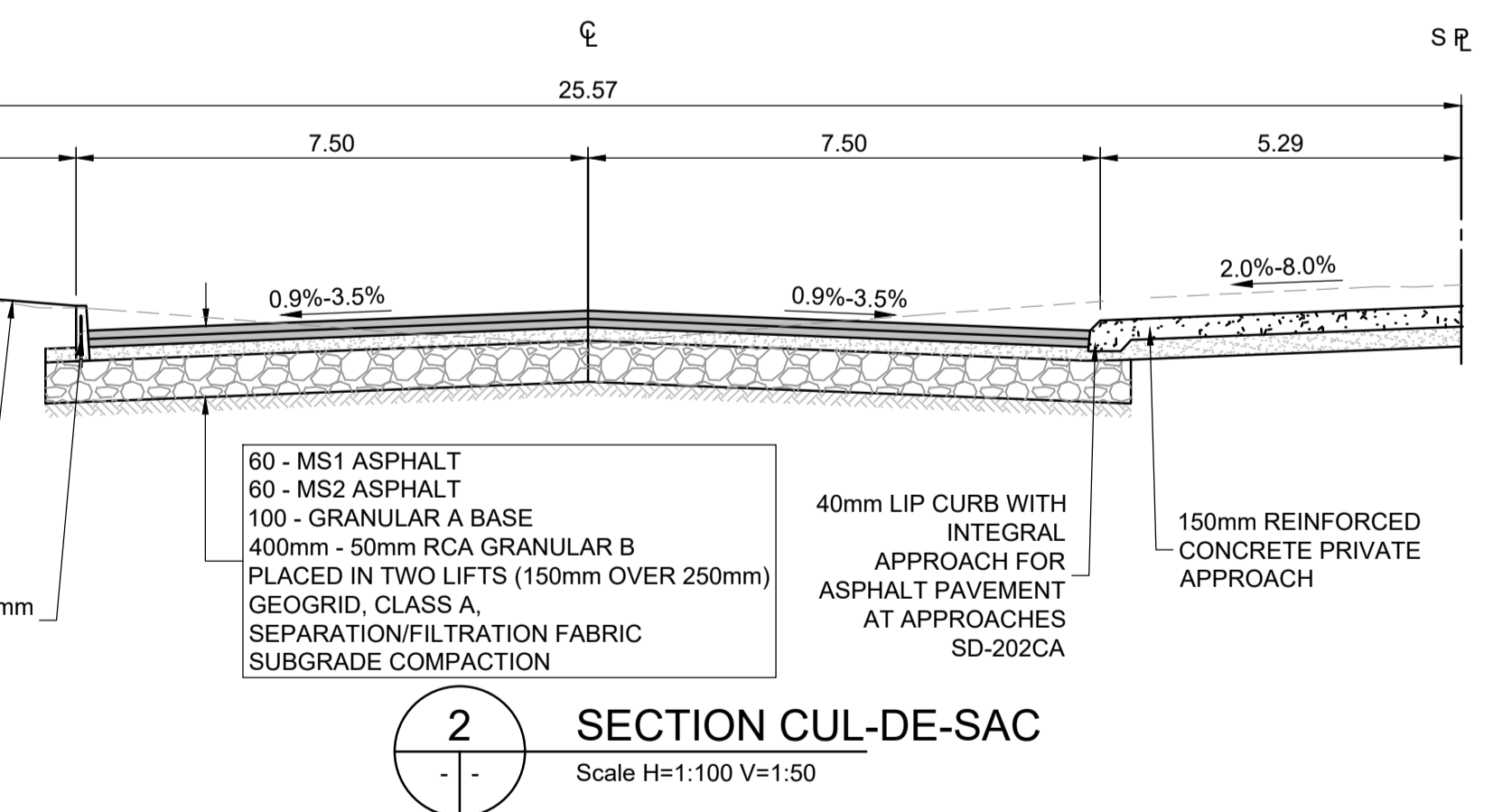
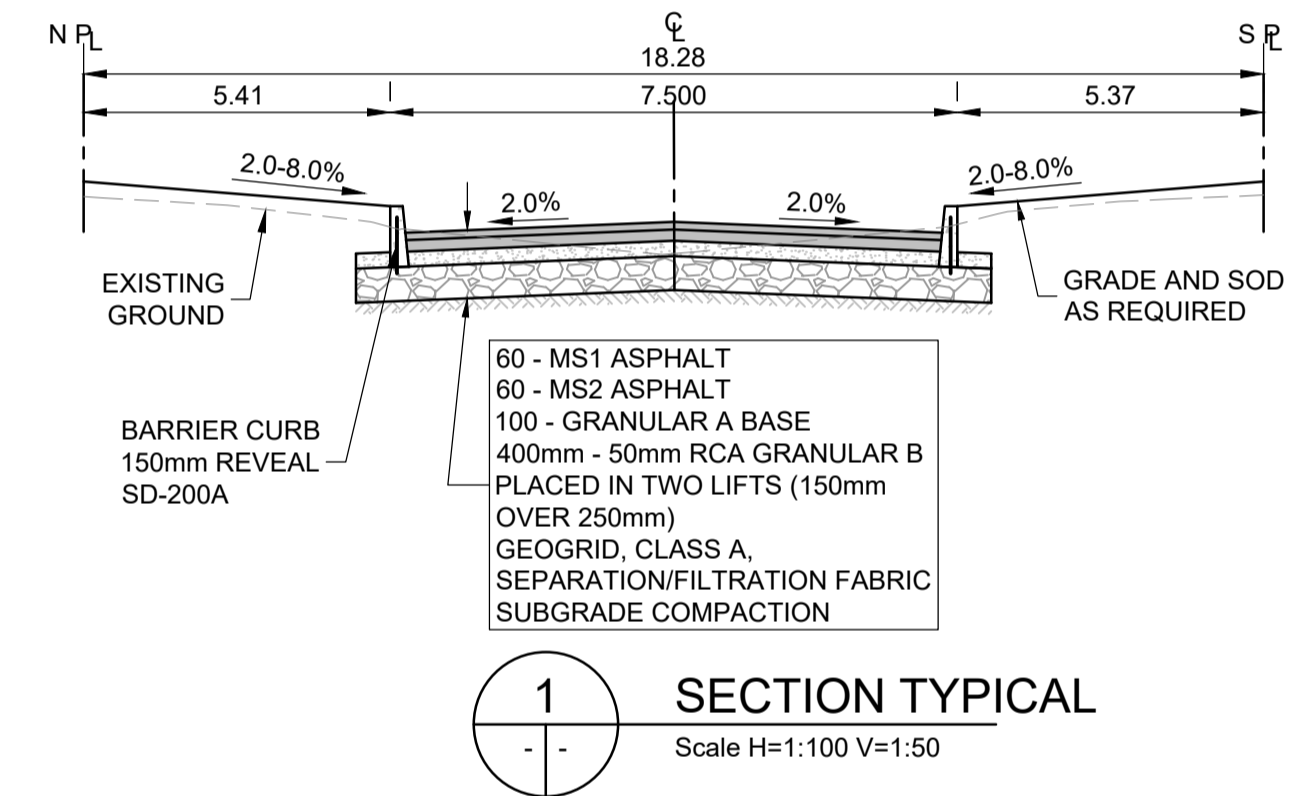


CONSTRUCTION NOTES:

1. ALL WORK AND MATERIALS TO BE IN ACCORDANCE WITH LATEST REVISION OF THE CITY OF WINNIPEG STANDARD CONSTRUCTION SPECIFICATIONS.
2. LEGAL PLAN AND UNDERGROUND INFORMATION FROM CITY OF WINNIPEG LBS IS TO BE USED FOR THIS PROJECT.
3. LOCATION OF EXISTING UTILITIES/SERVICES TO BE CONFIRMED IN THE FIELD BY THE CONTRACTOR.
4. CONTRACTOR TO TAKE PRECAUTIONARY STEPS TO AVOID DAMAGE FROM CONSTRUCTION ACTIVITIES TO TREES WITHIN THE LIMITS OF CONSTRUCTION.
5. REFER TO SPECIFICATION Exxx- PROTECTION OF EXISTING TREES.
6. ADJUST EXISTING WATER VALVES AND WATER SERVICE CURB STOPS TO GRADE. VALVES TO BE OPERATED BY CITY OF WINNIPEG CREWS.
7. WATER SERVICES TO BE INSULATED AS PER SD-018 WITH 100mm THICK x 2700mm WIDE TOP OF INSULATION OR RENEWED/INSULATED AS INDICATED ON PLAN IN ACCORDANCE TO CW-2110.
8. RENEW MODIFIED BARRIER CURB AND GUTTER.
9. CONSTRUCT 150mm REINFORCED CONCRETE APPROACH AS PER SD-235 WITH 1.5m TAPERS AND 40mm LIP CURB SD-202F AND AS DIRECTED BY THE CONTRACT ADMINISTRATOR.
10. ADJUST MANHOLE AND CATCH BASIN RIMS TO NEW GRADES. REMOVE AND REPLACE ALL MANHOLE FRAMES AND COVERS IN PAVEMENT. REPAIR/REPLACE BENCHING AND RISERS AS DIRECTED BY THE CONTRACT ADMINISTRATOR.
11. CONSTRUCT SIDEWALK CONNECTIONS TO PRIVATE APPROACHES AS PER SD-228A TO LIMITS AS SHOWN. ALL PRIVATE SIDEWALKS TO BE ADJUSTED TO NEW SIDEWALK OR TOP OF CURB ELEVATIONS AS REQUIRED. SIDEWALKS TO BE REPLACED WITH LIKE MATERIALS.
12. CB LEADS AND CP LEADS TO BE INSTALLED TO INVERT ELEVATIONS AS SHOWN. ALL CB AND CP LEADS TO BE INSTALLED AT MIN 2.0% SLOPE AND AS DIRECTED BY CONTRACT ADMINISTRATOR.
13. LIMITS OF BOULEVARD GRADING TO BE FINALIZED IN THE FIELD BY THE CONTRACT ADMINISTRATOR.
14. CONTRACTOR TO CONFIRM LOCATION AND LIMITS OF SEWER REPAIRS AS INDICATED ON THE DRAWINGS BY PERFORMING VIDEO INSPECTION AND REVIEWING WITH THE CONTRACT ADMINISTRATOR PRIOR TO CONSTRUCTION.
15. LAMP STANDARDS, HYDRO POLES AND ANCHORS THAT REQUIRE TEMPORARY SUPPORT, REMOVAL OR REPLACEMENT, TO BE DONE AT THE EXPENSE OF THE CONTRACTOR, AS NECESSARY. REFER TO SPECIFICATION E30-WORKING AROUND MANITOBA HYDRO POLES.
16. INSTALL 6.0 m OF 150 mm SUBDRAIN TO CATCH BASINS IN BOTH DIRECTIONS WITH END CAPS PARALLEL TO ROADWAY AS PER SD-245 OR AS NOTED.
17. COMPLETE CATCH BASIN/CATCH PIT CURB ISOLATIONS IN ACCORDANCE WITH SD-220D DETAILS.
18. BARRIER CURB TO BE CONSTRUCTED AS PER SD-200A, WITH 150mm REVEAL AND AS DIRECTED BY THE CONTRACT ADMINISTRATOR.
19. ADJUST PRECAST SIDEWALK BLOCKS AS DIRECTED BY THE CA.
20. ABANDON EXISTING DRAINAGE INLET.
21. DRIVEWAY TO BE FORMED IN SEGMENTS TO FORM A VERTICAL CURVE AS PER CONTRACT ADMINISTRATOR.
22. ALL PIPE UNDER EXISTING AND FUTURE PAVEMENT TO BE INSTALLED USING TRENCHLESS METHODS, WHERE NOT POSSIBLE, OPEN BUT WITH CLASS 2 BACKFILL.
23. ALL TRENCHES AND EXCAVATION FOR UNDER GROUND WORKS WITHIN 1 METRE OF A PAVED AREA INCLUDING SIDEWALKS SHALL BE CLASS 3 BACKFILL, (FLOODED, JETTED AND TAMPED) UNLESS OTHERWISE NOTED.
24. ALL BACKFILL UNDER BOULEVARD TO BE CLASS 4 UNLESS OTHERWISE NOTED.
25. FOR WATERMAIN/SEWERMAIN CLEARANCE MINIMUMS, REFER TO DRAWING C025.
26. ALL DIMENSIONS ARE TO BACK OF CURB.



METRIC
WHOLE NUMBERS INDICATE MILLIMETRES
DECIMALIZED NUMBERS INDICATE METRES

EXISTING	LEGEND-PLAN	PROPOSED	EXISTING	LEGEND-PLAN	PROPOSED	EXISTING	LEGEND-PROFILE	PROPOSED
	HYDRANT			CONCRETE			150 WM	
	VALVE			ASPHALT-RECONSTRUCTION			300 LDS	
	MANHOLE			ASPHALT-REHABILITATION			250 WWS	
	CATCH BASIN			SIDEWALK			HYDRANT	
	CATCH PIT			PROPERTY LINE			VALVE	
	150 WM			ELEVATION			NORTH/WEST GUTTER	
	300 LDS			CURB RAMP			SOUTH/EAST GUTTER	
	250 WWS			LSI/HP			NORTH/WEST PROPERTY LINE	
	HYDRO			DETECTABLE TILE			SOUTH/EAST PROPERTY LINE	
	M.T.S.							
	GAS							

UNDERGROUND STRUCTURES

LOCATION OF UNDERGROUND STRUCTURES AS SHOWN ARE BASED ON THE BEST INFORMATION AVAILABLE. BUT NO GUARANTEE IS GIVEN THAT ALL EXISTING UTILITIES ARE SHOWN OR THAT THE GIVEN LOCATIONS ARE EXACT. CONFIRMATION OF EXISTENCE AND EXACT LOCATION OF ALL SERVICES MUST BE OBTAINED FROM THE INDIVIDUAL UTILITIES BEFORE PROCEEDING WITH CONSTRUCTION.

B.M. ELEV.	NO.	ISSUED FOR	DATE	BY
	1	ISSUED FOR ADDENDUM 1	26.03.27	JNC
	0	ISSUED FOR TENDER	26.03.17	JNC
		NO. REVISIONS		

TETRA TECH

DESIGNED BY: MA
DRAWN BY: MA

REVIEWED BY: JT/DL/JC
APPROVED BY: JNC

SCALE: H = 1:250
V = 10

DATE: 2026.03.17

ORIGINAL DRAWING REVISION "0" SEALED BY J.N. CRANG 26.03.17

CONSULTANT DRAWING NO. 704-INF.MB03049-01-DWG-C013

THE CITY OF WINNIPEG PUBLIC WORKS DEPARTMENT

2026 LOCAL STREET RENEWAL PROGRAM
26-R-03

ASPHALT RECONSTRUCTION
KENNETH STREET (DOWKER AVE TO STA 1+088)
PLAN AND PROFILE

CITY DRAWING NUMBER P-3599-13
SHEET OF 13 28
C013

TENDER #203-2026

ENGINEERS GEOSCIENTISTS MANITOBA

Certificate of Authorization
Tetra Tech Canada Inc.
No. 6499