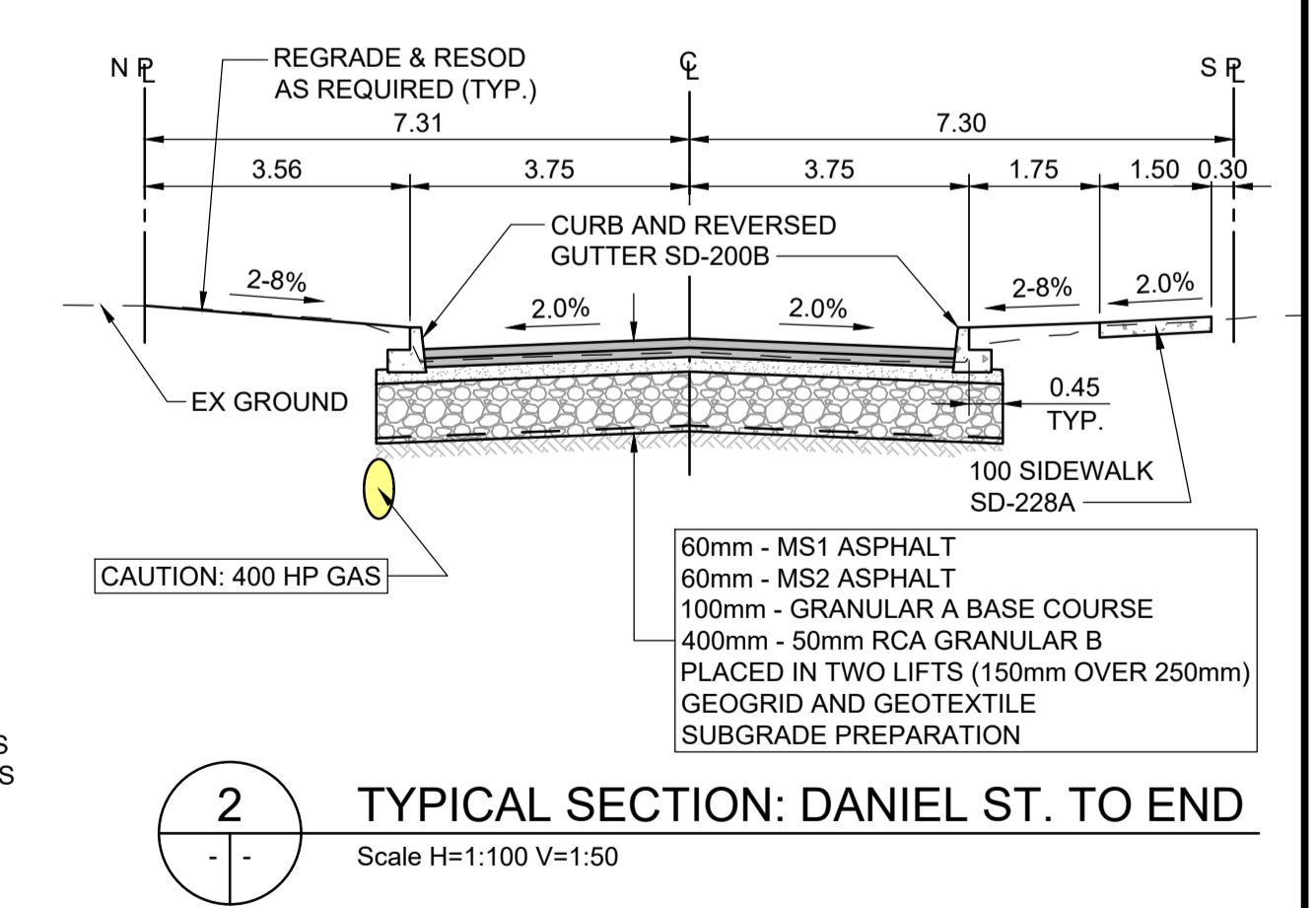
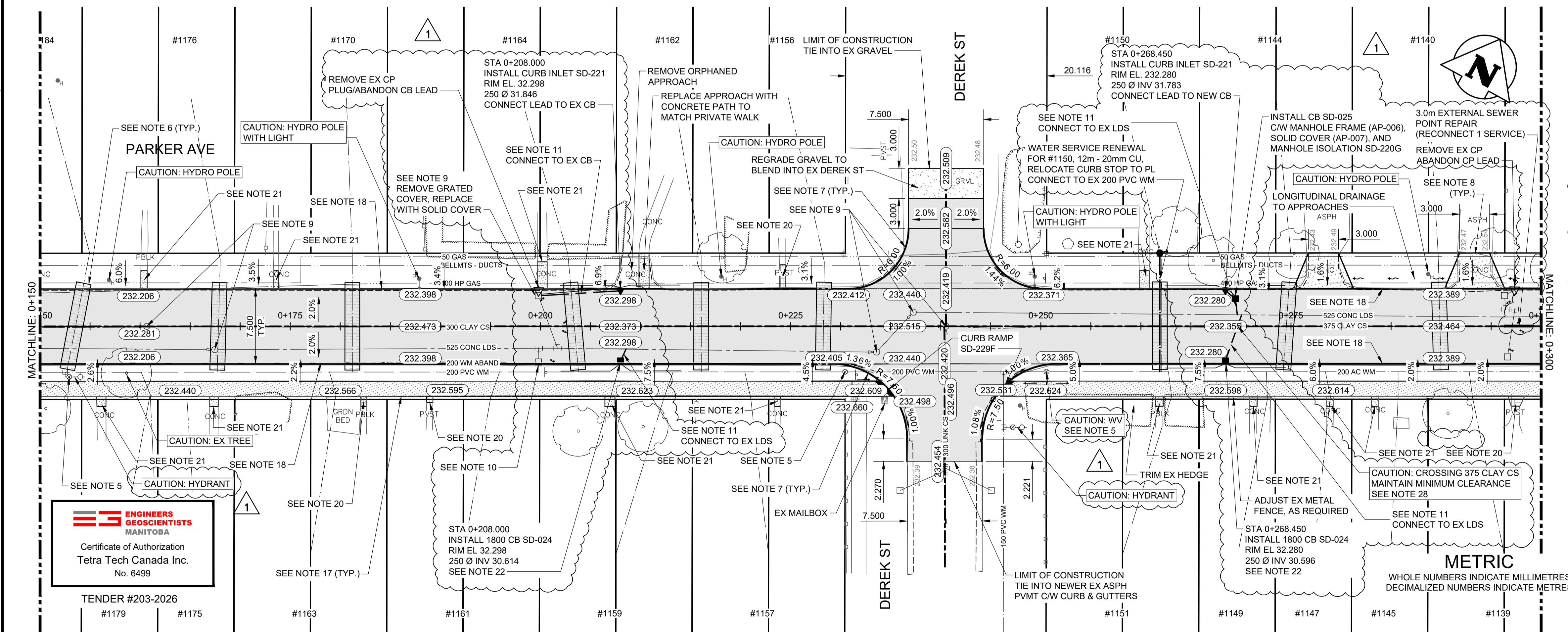


- CONSTRUCTION NOTES:**
- ALL WORK AND MATERIALS TO BE IN ACCORDANCE WITH LATEST REVISION OF THE CITY OF WINNIPEG STANDARD CONSTRUCTION SPECIFICATIONS.
 - LEGAL PLAN AND UNDERGROUND INFORMATION FROM CITY OF WINNIPEG LBIS.
 - LOCATION OF EXISTING UTILITIES/SERVICES TO BE CONFIRMED IN THE FIELD BY THE CONTRACTOR.
 - CONTRACTOR TO TAKE PRECAUTIONARY STEPS TO AVOID DAMAGE FROM CONSTRUCTION ACTIVITIES TO TREES WITHIN THE LIMITS OF CONSTRUCTION. REFER TO SPECIFICATION EXXX- PROTECTION OF EXISTING TREES.
 - ADJUST EXISTING WATER VALVES AND WATER SERVICE CURB STOPS TO GRADE. VALVES TO BE OPERATED BY CITY OF WINNIPEG CREWS.
 - WATER SERVICES TO BE INSULATED AS PER SD-018 WITH 100mm THICK x 2700mm WIDE TOP OF INSULATION OR RENEWED/INSULATED AS INDICATED ON PLAN IN ACCORDANCE TO CW-2110.
 - CONSTRUCT MODIFIED BARRIER CURB SD-203D. TO BE USED AT ALL INTERSECTION RADI.
 - CONSTRUCT 150mm REINFORCED CONCRETE APPROACH AS PER SD-235 WITH 1.5m TAPERS AND 40mm LIP CURB SD-202F AND AS DIRECTED BY THE CONTRACT ADMINISTRATOR.
 - ADJUST MANHOLE AND CATCH BASIN RIMS TO NEW GRADES. REMOVE AND REPLACE ALL MANHOLE FRAMES AND COVERS IN PAVEMENT. FOR MANHOLE AND CATCH BASIN ISOLATION DETAILS, REFER TO SD-220G AND SD-220E, RESPECTIVELY. REPAIR/REPLACE BENCHING AND RISERS AS DIRECTED BY THE CONTRACT ADMINISTRATOR.
 - ABANDON CB AND LEAD PIPE.
 - CB LEADS, CP LEADS, AND CURB INLET LEADS TO BE INSTALLED TO INVERT ELEVATIONS AS SHOWN. ALL CB AND CP LEADS TO BE INSTALLED AT MIN 2.0% SLOPE AND AS DIRECTED BY CONTRACT ADMINISTRATOR. ALL CURB INLET LEADS TO BE INSTALLED AT MIN 5.0% SLOPE AND AS DIRECTED BY CONTRACT ADMINISTRATOR.
 - LIMITS OF BOULEVARD GRADING TO BE FINALIZED IN THE FIELD BY THE CONTRACT ADMINISTRATOR.
 - CONTRACTOR TO CONFIRM LOCATION AND LIMITS OF SEWER REPAIRS AS INDICATED ON THE DRAWINGS BY PERFORMING VIDEO INSPECTION AND REVIEWING WITH THE CONTRACT ADMINISTRATOR PRIOR TO CONSTRUCTION.
 - LAMP STANDARDS, HYDRO POLES AND ANCHORS THAT REQUIRE TEMPORARY SUPPORT, REMOVAL OR REPLACEMENT, TO BE DONE AT THE EXPENSE OF THE CONTRACTOR, AS NECESSARY. REFER TO SPECIFICATION EXX-WORKING AROUND MANITOBA HYDRO POLES.
 - INSTALL 6.0 m OF 150 mm SUBDRAIN TO CATCH BASINS IN BOTH DIRECTIONS WITH END CAPS PARALLEL TO ROADWAY AS PER SD-245 OR AS NOTED.
 - COMPLETE CATCH BASIN/CATCH PIT CURB ISOLATIONS IN ACCORDANCE WITH SD-220D DETAILS.
 - INSTALL 100mm CONCRETE SIDEWALK AS PER SD-228A.
 - BARRIER CURB AND REVERSED GUTTER TO BE CONSTRUCTED AS PER SD-200B WITH 150mm REVEAL AND AS DIRECTED BY THE CONTRACT ADMINISTRATOR.
 - BARRIER CURB AND GUTTER TO BE CONSTRUCTED AS PER SD-200B WITH 150mm REVEAL AND AS DIRECTED BY THE CONTACT ADMINISTRATOR.
 - REGRADE EXISTING INTERLOCKING PAVING STONE/PRECAST CONCRETE SLABS. REMOVE EXISTING BASE AND REQUIRED SUBGRADE TO PROVIDE FOR 150mm BASE COURSE.
 - REPLACE AND REGRADE EXISTING CONCRETE WALKWAY. REMOVE EXISTING BASE AND REQUIRED SUBGRADE TO PROVIDE FOR 150mm BASE COURSE.
 - COMPLETE CURB AND GUTTER INLET ISOLATION AS PER SD-220E.
 - ALL DIMENSIONS ARE TO BACK OF CURB.
 - REFER TO DRAWINGS U001 AND U002 FOR PARKER AVENUE WATERMAIN RENEWAL DETAILS.
 - ALL PIPE UNDER EXISTING AND FUTURE PAVEMENT TO BE INSTALLED USING TRENCHLESS METHODS, WHERE NOT POSSIBLE, OPEN CUT WITH CLASS 2 BACKFILL.
 - ALL TRENCHES AND EXAVATION FOR UNDER GROUND WORKS WITHIN 1 METRE OF A PAVED AREA INCLUDING SIDEWALKS SHALL BE CLASS 3 BACKFILL, (FLOODED, JETTED AND TAMPED) UNLESS OTHERWISE NOTED.
 - ALL BACKFILL UNDER BOULEVARD TO BE CLASS 4 UNLESS OTHERWISE NOTED.
 - FOR WATERMAIN/SEWERMAIN CLEARANCE MINIMUMS, REFER TO DRAWING C025.



**ENGINEERS
GEOSCIENTISTS
MANITOBA**
Certificate of Authorization
Tetra Tech Canada Inc.
No. 6499

EXISTING	LEGEND-PLAN	PROPOSED	EXISTING	LEGEND-PLAN	PROPOSED	EXISTING	LEGEND-PROFILE	PROPOSED
○	HYDRANT	◆	▨	ASPHALT - RECONSTRUCT.	▨	—	Q PROFILE	—
○	VALVE	◆	▨	CONCRETE - RECONSTRUCT.	▨	—	NORTH/WEST GUTTER	—
○	MANHOLE	◆	▨	MILL & FILL - OVERLAY	▨	—	SOUTH/EAST GUTTER	—
○	CATCH BASIN	◆	▨	CONC. SIDEWALK	▨	—	SIDEWALK	—
○	CATCH PIT / CURB INLET	◆	▨	PAVING STONES	▨	—	NORTH/WEST PROP. LINE	—
150 WM	WATERMAIN	200 PVC WM	▨	P.C. CONC. SLAB	▨	—	SOUTH/EAST PROP. LINE	—
300 LDS	LAND DRAINAGE SEWER	▨	▨	CURB RAMP	▨	—		
250 WWS	WASTE WATER SEWER	▨	▨	DETECTABLE TILE	▨	—		
HYDRO	HYDRO	232.000	▨	ELEVATION	(232.000)	—		
MTS	M.T.S.	▨	▨	LS / HP	▨	—		
50 GAS	GAS	▨	▨	PROPERTY LINE	▨	—		
EXISTING	LEGEND-PLAN	PROPOSED	EXISTING	LEGEND-PLAN	PROPOSED	EXISTING	LEGEND-PROFILE	PROPOSED

LOCATION OF UNDERGROUND STRUCTURES AS SHOWN ARE BASED ON THE BEST INFORMATION AVAILABLE. BUT NO GUARANTEE IS GIVEN THAT ALL EXISTING UTILITIES ARE SHOWN OR THAT THE GIVEN LOCATIONS ARE EXACT. CONFIRMATION OF EXISTENCE AND EXACT LOCATION OF ALL SERVICES MUST BE OBTAINED FROM THE INDIVIDUAL UTILITIES BEFORE PROCEEDING WITH CONSTRUCTION.

NO.	REVISIONS	DATE	BY
1	ISSUED FOR ADDENDUM 1	26.03.27	JNC
0	ISSUED FOR TENDER	26.03.17	JNC

TETRA TECH

DESIGNED BY: BG
REVIEWED BY: JT/DL/JNC

DRAWN BY: BG
APPROVED BY: JNC

SCALE: H = 1:250
V = 10

RELEASED FOR CONSTRUCTION
STREETS PROJECT ENGINEER

DATE: 2026.03.17

**THE CITY OF WINNIPEG
PUBLIC WORKS DEPARTMENT**

ORIGINAL DRAWING REVISION * 0 * SEALED BY J.N. CRANG 26.03.17

2026 LOCAL STREET RENEWAL PROGRAM
26-R-03

CONSULTANT DRAWING NO. 704-INF-MBI03048-01-C0015

CITY DRAWING NUMBER P-3599-15
SHEET OF 15 OF 28

ASPHALT RECONSTRUCTION
PARKER AVENUE (STA 0+150 TO STA 0+300)
PLAN AND PROFILE

C015