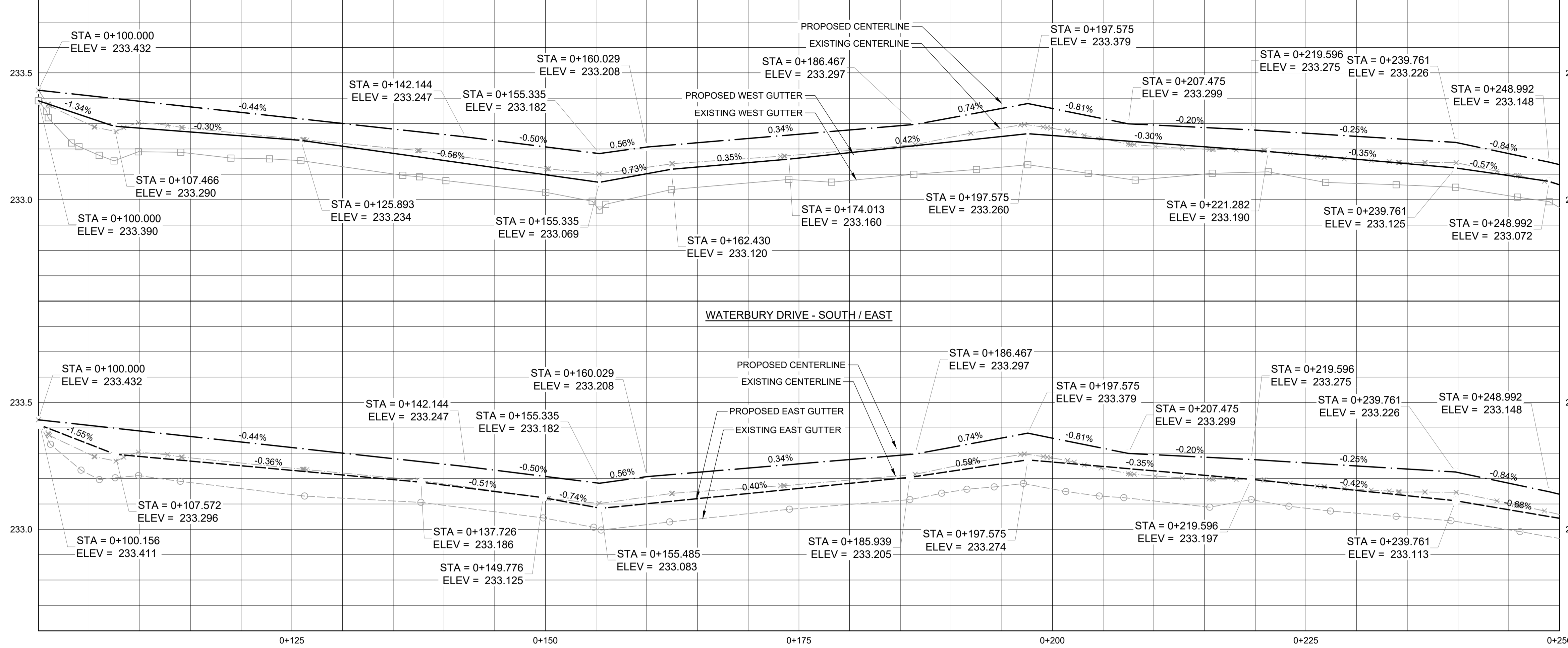
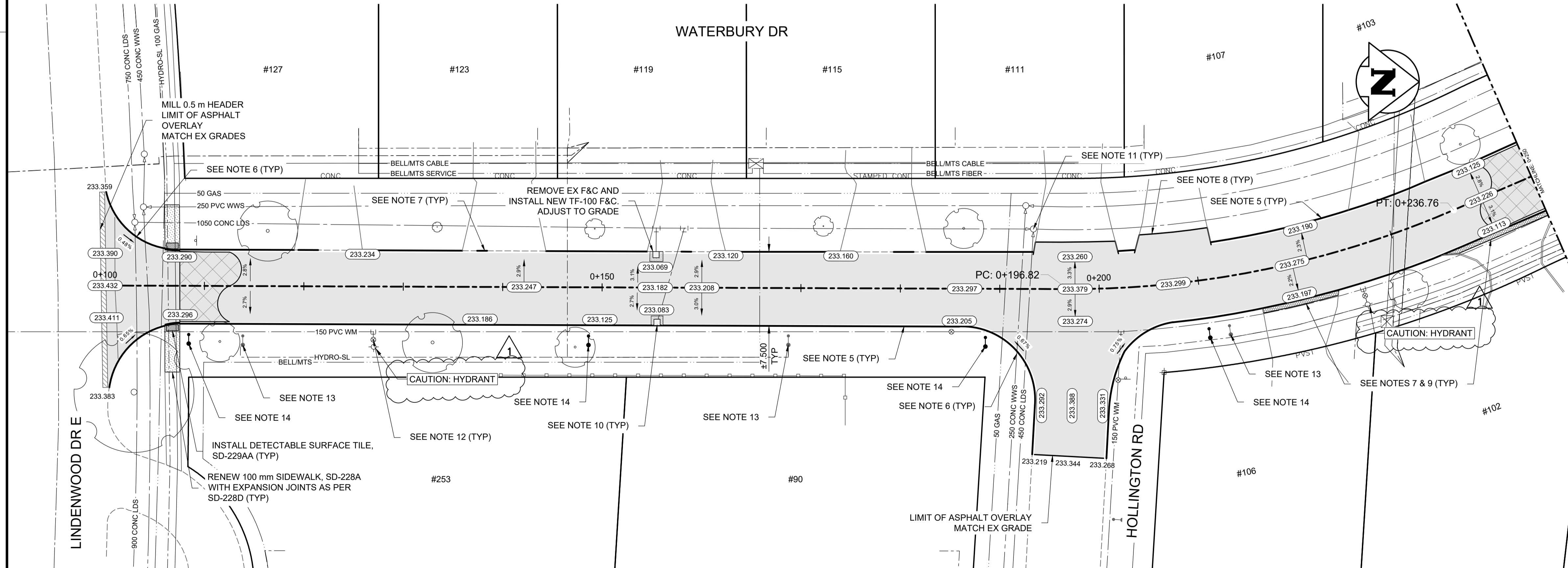
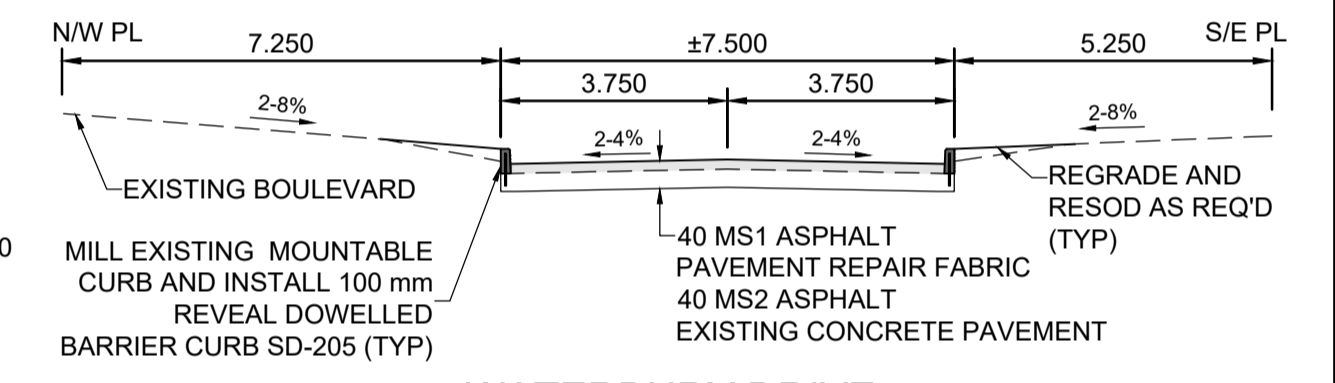


WATERBURY DRIVE - NORTH / WEST

WATERBURY DRIVE - SOUTH / EAST



- CONSTRUCTION NOTES:**
- ALL WORK AND MATERIALS TO BE IN ACCORDANCE WITH LATEST REVISION OF THE CITY OF WINNIPEG STANDARD CONSTRUCTION SPECIFICATIONS.
  - LEGAL PLAN AND UNDERGROUND INFORMATION FROM CITY OF WINNIPEG LBIS.
  - LOCATION OF EXISTING UTILITIES/SERVICES TO BE CONFIRMED IN THE FIELD BY THE CONTRACTOR.
  - CONTRACTOR TO TAKE PRECAUTIONARY STEPS TO AVOID DAMAGE FROM CONSTRUCTION ACTIVITIES TO TREES WITHIN THE LIMITS OF CONSTRUCTION. REFER TO SPECIFICATION E5-PROTECTION OF EXISTING TREES.
  - MILL EXIST MOUNTABLE CURB AND CONSTRUCT BARRIER CURB DOWELED SD-205 (100 mm REVEAL).
  - REMOVE EXISTING CURB AND CONSTRUCT MODIFIED BARRIER CURB SD-203B (100 mm REVEAL).
  - CONSTRUCT 75 mm LIP CURB SD-202B.
  - OVERLAY EXISTING CURB AND APPROACH WITH ASPHALT TO LIMITS SHOWN.
  - REGRADE EXISTING PAVING STONES.
  - REMOVE MOUNTABLE CURB AND GUTTER FRAME AND COVER AP-015, AP-016, AND INSTALL BARRIER CURB FRAME AND COVER AP-011, AP-012. ADJUST TO GRADE. COMPLETE CATCH BASIN/CATCH PIT CURB ISOLATIONS IN ACCORDANCE WITH SD-220E.
  - ADJUST MANHOLE AND CATCH BASIN RIMS TO NEW GRADES.
  - ADJUST WATER VALVES AND CURB STOPS TO NEW GRADES.
  - REMOVE EXISTING STREET LIGHT POLE AND BASE.
  - INSTALL NEW STREET LIGHT BASE AND POLE.
  - CB LEADS TO BE INSTALLED TO INVERT ELEVATIONS AS SHOWN. ALL CB LEADS TO BE INSTALLED AT MIN 2.0% SLOPE AND AS DIRECTED BY CONTRACT ADMINISTRATOR.
  - LIMITS OF BOULEVARD GRADING TO BE FINALIZED IN THE FIELD BY THE CONTRACT ADMINISTRATOR.
  - LAMP STANDARDS, HYDRO POLES AND ANCHORS THAT REQUIRE TEMPORARY SUPPORT, REMOVAL OR REPLACEMENT, TO BE DONE AT THE EXPENSE OF THE CONTRACTOR, AS NECESSARY. REFER TO SPECIFICATION E30-WORKING AROUND MANITOBA HYDRO POLES.
  - ALL DIMENSIONS ARE TO BACK OF CURB.



**METRIC**  
WHOLE NUMBERS INDICATE MILLIMETRES  
DECIMALIZED NUMBERS INDICATE METRES

- WARNING**
- IF POWER EQUIPMENT OR EXPLOSIVES ARE TO BE USED FOR EXCAVATION ON THIS PROJECT THE CONTRACTOR MUST:
- NOTIFY THE GAS COMPANY OF THE PROPOSED LOCATION OF EXCAVATION.
  - TAKE PRECAUTION TO AVOID DAMAGE TO GAS COMPANY INSTALLATIONS SEE PROVINCIAL REGULATION 210/72 FOR DETAILS.
  - OBTAIN EXCAVATION PERMITS PRIOR TO CONSTRUCTION.

**ENGINEERS GEOSCIENTISTS MANITOBA**  
Certificate of Authorization  
Tetra Tech Canada Inc.  
No. 6499

EXISTING	LEGEND-PLAN	PROPOSED	EXISTING	LEGEND-PLAN	PROPOSED	EXISTING	LEGEND-PROFILE	PROPOSED
	HYDRANT			CONCRETE			WATERMAIN	
	VALVE			ASPHALT			LAND DRAINAGE SEWER	
	MANHOLE			SIDEWALK			WASTE WATER SEWER	
	CATCH BASIN			PAVING STONES			HYDRANT	
	CATCH PIT			PAVEMENT REPAIR FABRIC			VALVE	
	WATERMAIN			MILL EXISTING PAVEMENT			PROFILE	
	300 LDS LAND DRAINAGE SEWER			PROPERTY LINE			NORTH/WEST GUTTER	
	250 WWS WASTE WATER SEWER			ELEVATION			SOUTH/EAST GUTTER	
	HYDRO			CURB RAMP			NORTH/WEST DITCH	
	M.T.S.			DETECTABLE TILE			SOUTH/EAST DITCH	
	100 GAS							

**UNDERGROUND STRUCTURES**

LOCATION OF UNDERGROUND STRUCTURES AS SHOWN ARE BASED ON THE BEST INFORMATION AVAILABLE. BUT NO GUARANTEE IS GIVEN THAT ALL EXISTING UTILITIES ARE SHOWN OR THAT THE GIVEN LOCATIONS ARE EXACT. CONFIRMATION OF EXISTENCE AND EXACT LOCATION OF ALL SERVICES MUST BE OBTAINED FROM THE INDIVIDUAL UTILITIES BEFORE PROCEEDING WITH CONSTRUCTION.

NO.	REVISIONS	DATE	BY
1	ISSUED FOR ADDENDUM 1	26.03.27	JNC
0	ISSUED FOR TENDER	26.03.17	JNC

**TETRA TECH**

DESIGNED BY: KHL  
DRAWN BY: KHL  
REVIEWED BY: JT/DL/JNC  
APPROVED BY: JNC  
RELEASED FOR CONSTRUCTION

SCALE: H = 1:250  
V = 1:10

DATE: 26.03.17

ORIGINAL DRAWING REVISION "0" SEALED BY J.N. CRANG 26.03.17

CONSULTANT DRAWING NO. 704-INF-MB03048-01-C018

**THE CITY OF WINNIPEG PUBLIC WORKS DEPARTMENT**

2026 LOCAL STREET RENEWAL PROGRAM  
26-R-03

MAJOR REHABILITATION WATERBURY DRIVE (LINDENWOOD DRIVE E TO STA 0+250)

CITY DRAWING NUMBER P-3599-18  
SHEET OF 18 28  
C018