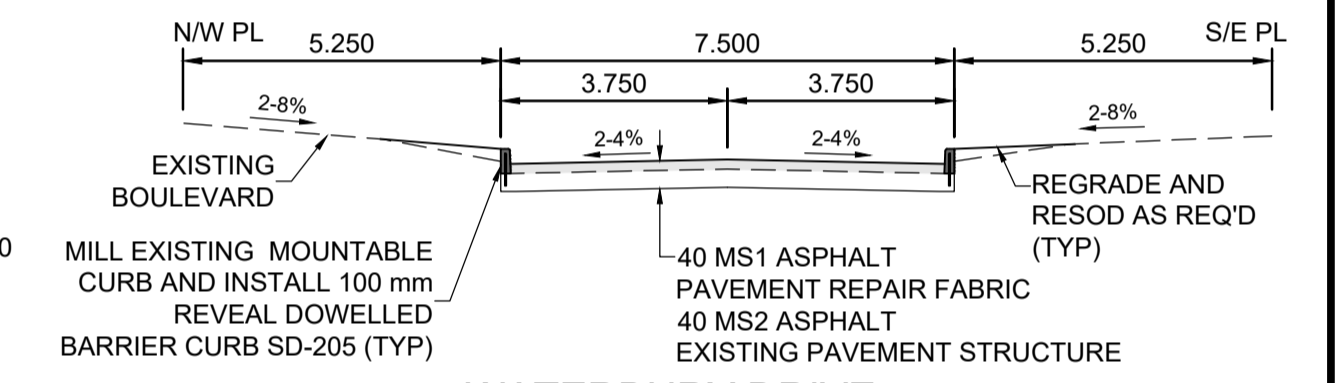


WATERBURY DRIVE - NORTH / WEST

WATERBURY DRIVE - SOUTH / EAST

CONSTRUCTION NOTES:

- ALL WORK AND MATERIALS TO BE IN ACCORDANCE WITH LATEST REVISION OF THE CITY OF WINNIPEG STANDARD CONSTRUCTION SPECIFICATIONS.
- LEGAL PLAN AND UNDERGROUND INFORMATION FROM CITY OF WINNIPEG LBIS.
- LOCATION OF EXISTING UTILITIES/SERVICES TO BE CONFIRMED IN THE FIELD BY THE CONTRACTOR.
- CONTRACTOR TO TAKE PRECAUTIONARY STEPS TO AVOID DAMAGE FROM CONSTRUCTION ACTIVITIES TO TREES WITHIN THE LIMITS OF CONSTRUCTION. REFER TO SPECIFICATION E5-PROTECTION OF EXISTING TREES.
- MILL EXIST MOUNTABLE CURB AND CONSTRUCT BARRIER CURB DOWELED SD-205 (100 mm REVEAL).
- REMOVE EXISTING CURB AND CONSTRUCT MODIFIED BARRIER CURB SD-203B (100 mm REVEAL).
- CONSTRUCT 75 mm LIP CURB SD-202B.
- OVERLAY EXISTING CURB AND APPROACH WITH ASPHALT TO LIMITS SHOWN.
- REGRADE EXISTING PAVING STONES.
- REMOVE MOUNTABLE CURB AND GUTTER FRAME AND COVER AP-015, AP-016, AND INSTALL BARRIER CURB FRAME AND COVER AP-011, AP-012. ADJUST TO GRADE. COMPLETE CATCH BASIN/CATCH PIT CURB ISOLATIONS IN ACCORDANCE WITH SD-220E.
- ADJUST MANHOLE AND CATCH BASIN RIMS TO NEW GRADES.
- ADJUST WATER VALVES AND CURB STOPS TO NEW GRADES.
- REMOVE EXISTING STREET LIGHT POLE AND BASE.
- INSTALL NEW STREET LIGHT BASE AND POLE.
- CB AND CP LEADS TO BE INSTALLED TO INVERT ELEVATIONS AS SHOWN. ALL CB AND CP LEADS TO BE INSTALLED AT MIN 2.0% SLOPE AND AS DIRECTED BY CONTRACT ADMINISTRATOR.
- LIMITS OF BOULEVARD GRADING TO BE FINALIZED IN THE FIELD BY THE CONTRACT ADMINISTRATOR.
- LAMP STANDARDS, HYDRO POLES AND ANCHORS THAT REQUIRE TEMPORARY SUPPORT, REMOVAL OR REPLACEMENT, TO BE DONE AT THE EXPENSE OF THE CONTRACTOR, AS NECESSARY. REFER TO SPECIFICATION E30-WORKING AROUND MANITOBA HYDRO POLES.
- ALL DIMENSIONS ARE TO BACK OF CURB.



WATERBURY DRIVE
TYPICAL PAVEMENT SECTION
MAJOR REHABILITATION
SCALE: NTS

METRIC

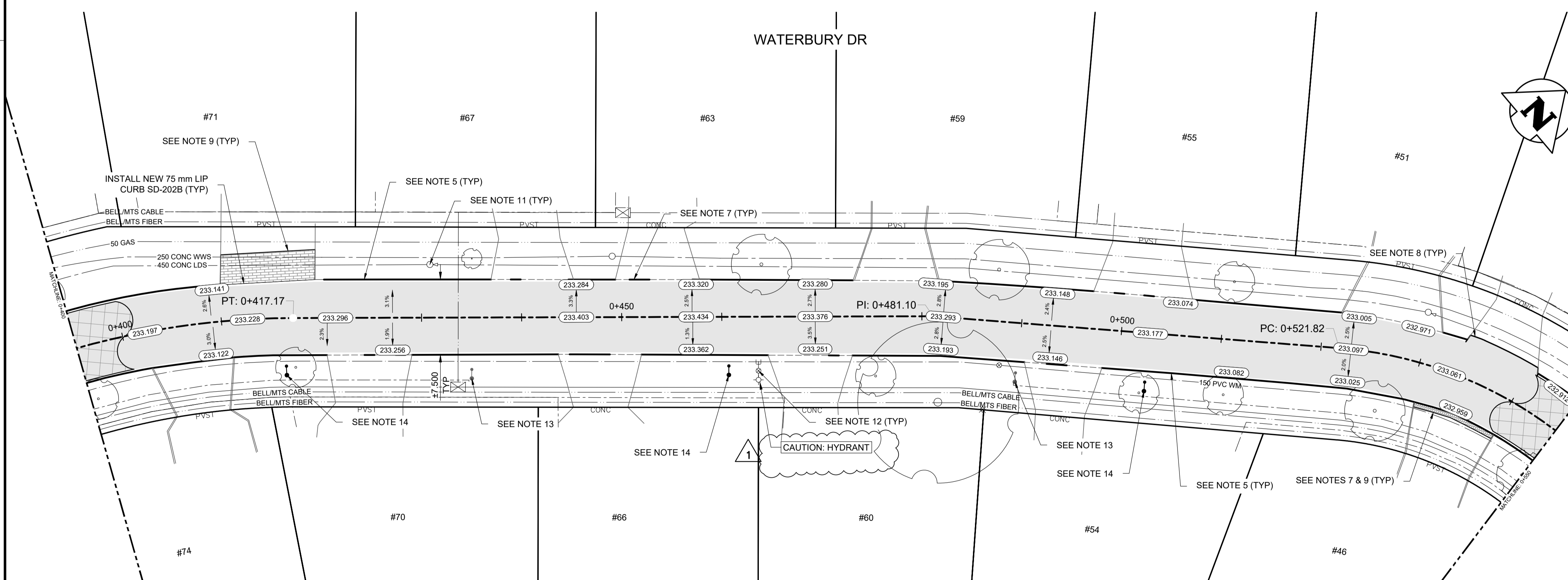
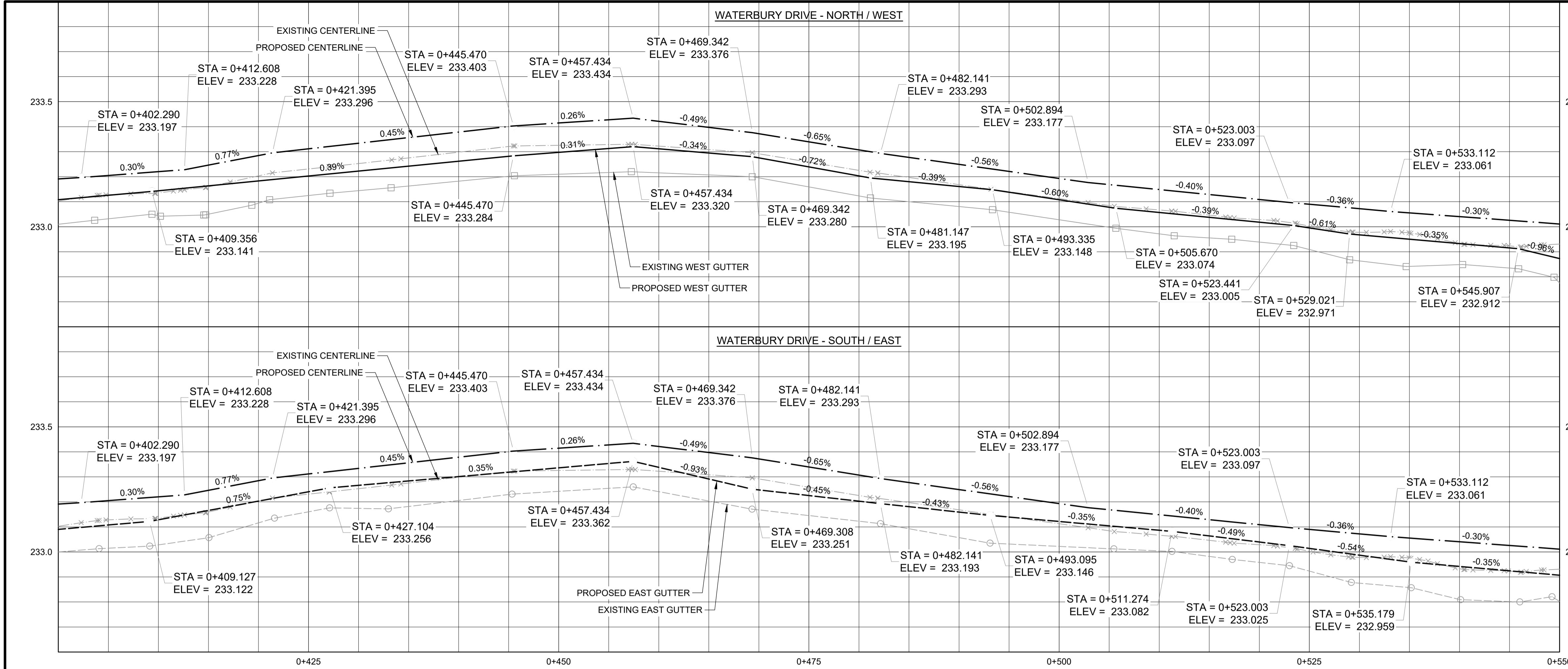
WHOLE NUMBERS INDICATE MILLIMETRES
DECIMALIZED NUMBERS INDICATE METRES

WARNING

IF POWER EQUIPMENT OR EXPLOSIVES ARE TO BE USED FOR EXCAVATION ON THIS PROJECT THE CONTRACTOR MUST:

- NOTIFY THE GAS COMPANY OF THE PROPOSED LOCATION OF EXCAVATION.
- TAKE PRECAUTION TO AVOID DAMAGE TO GAS COMPANY INSTALLATIONS SEE PROVINCIAL REGULATION 210/72 FOR DETAILS.
- OBTAIN EXCAVATION PERMITS PRIOR TO CONSTRUCTION.

**ENGINEERS
GEOSCIENTISTS**
MANITOBA
Certificate of Authorization
Tetra Tech Canada Inc.
No. 6499



	HYDRANT			CONCRETE		150 W/M		WATERMAIN		150 W/M
	VALVE			ASPHALT		300 LDS		LAND DRAINAGE SEWER		300 LDS
	MANHOLE			SIDEWALK		250 WWS		WASTE WATER SEWER		250 WWS
	CATCH BASIN			PAVING STONES		HYDRANT		VALVE		VALVE
	CATCH PIT			PARTIAL DEPTH REPAIR		Q PROFILE		NORTH/WEST GUTTER		NORTH/WEST GUTTER
	WATERMAIN			PROPERTY LINE		NORTH/WEST DITCH		SOUTH/EAST DITCH		SOUTH/EAST DITCH
	300 LDS			ELEVATION		NORTH/WEST DITCH		SOUTH/EAST DITCH		SOUTH/EAST DITCH
	250 WWS			CURB RAMP		SOUTH/EAST DITCH		SOUTH/EAST DITCH		SOUTH/EAST DITCH
	HYDRO			DETECTABLE TILE						
	M.T.S.									
	100 GAS									
	EXISTING									
	LEGEND-PLAN									
	LEGEND-PROFILE									

UNDERGROUND STRUCTURES

LOCATION OF UNDERGROUND STRUCTURES AS SHOWN ARE BASED ON THE BEST INFORMATION AVAILABLE. BUT NO GUARANTEE IS GIVEN THAT ALL EXISTING UTILITIES ARE SHOWN OR THAT THE GIVEN LOCATIONS ARE EXACT. CONFIRMATION OF EXISTENCE AND EXACT LOCATION OF ALL SERVICES MUST BE OBTAINED FROM THE INDIVIDUAL UTILITIES BEFORE PROCEEDING WITH CONSTRUCTION.

TETRA TECH

DESIGNED BY: KHL
REVIEWED BY: JT/DL/JNC

DRAWN BY: KHL
APPROVED BY: JNC

SCALE: H = 1:250
V = 1:10

RELEASED FOR CONSTRUCTION

STREETS PROJECT ENGINEER

ORIGINAL DRAWING REVISION "0" SEALED BY J.N. CRANG 26.03.17

THE CITY OF WINNIPEG
PUBLIC WORKS DEPARTMENT

2026 LOCAL STREET RENEWAL PROGRAM
26-R-03

CITY DRAWING NUMBER: P-3599-20
SHEET OF: 20 OF 28

MAJOR REHABILITATION
WATERBURY DRIVE (STA 0+400 TO STA 0+550)
PLAN AND PROFILE

C020