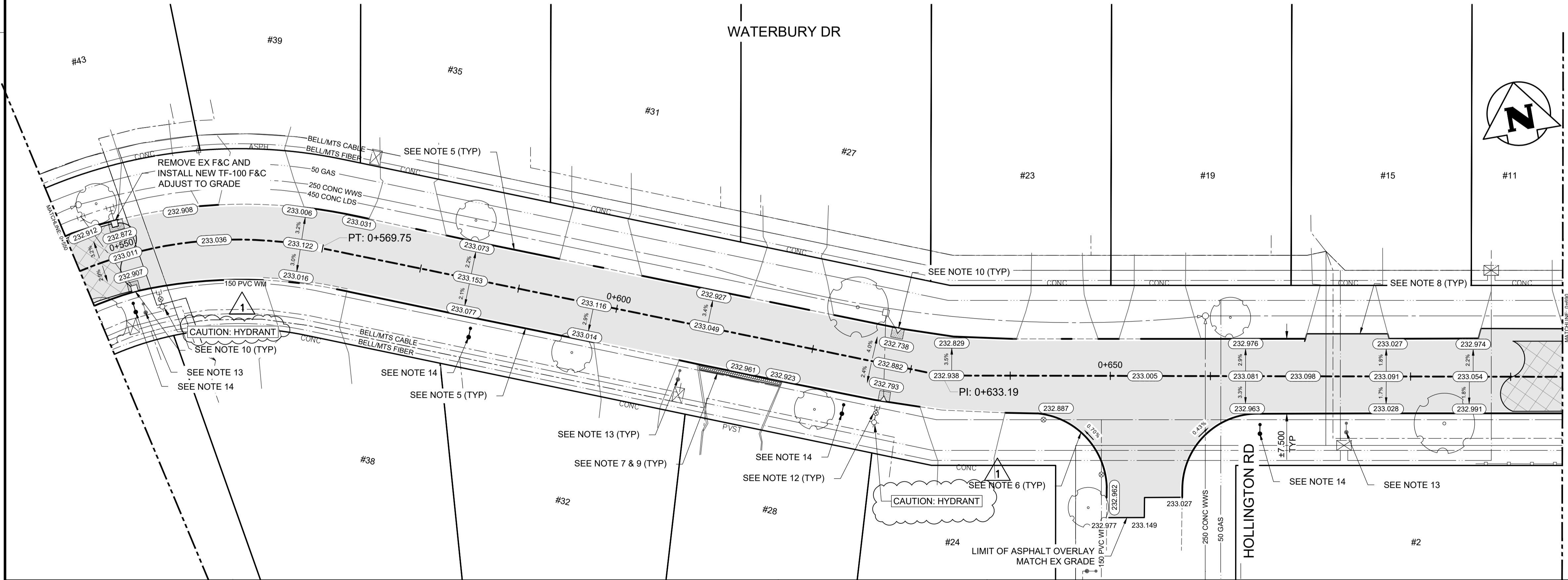
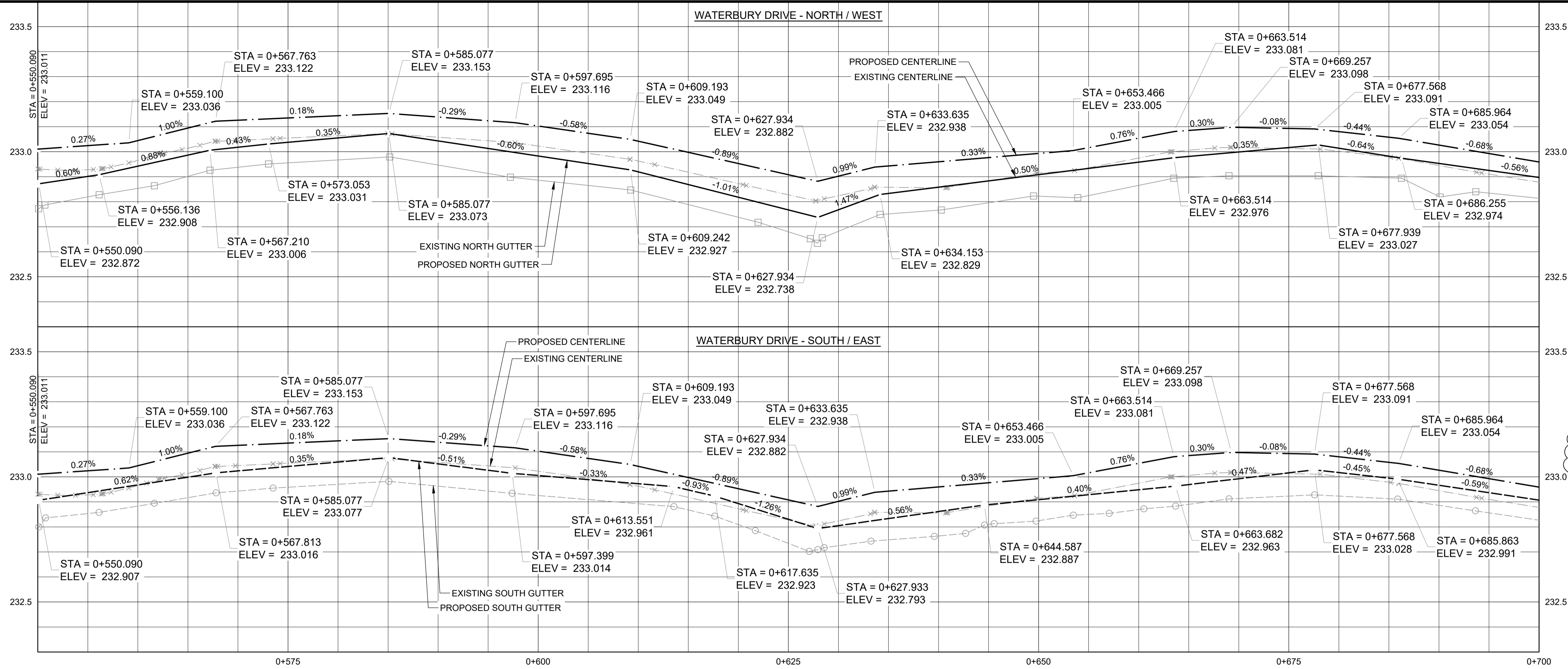


WATERBURY DRIVE - NORTH / WEST

WATERBURY DRIVE - SOUTH / EAST

CONSTRUCTION NOTES:

- ALL WORK AND MATERIALS TO BE IN ACCORDANCE WITH LATEST REVISION OF THE CITY OF WINNIPEG STANDARD CONSTRUCTION SPECIFICATIONS.
- LEGAL PLAN AND UNDERGROUND INFORMATION FROM CITY OF WINNIPEG LBIS.
- LOCATION OF EXISTING UTILITIES/SERVICES TO BE CONFIRMED IN THE FIELD BY THE CONTRACTOR.
- CONTRACTOR TO TAKE PRECAUTIONARY STEPS TO AVOID DAMAGE FROM CONSTRUCTION ACTIVITIES TO TREES WITHIN THE LIMITS OF CONSTRUCTION. REFER TO SPECIFICATION E5-PROTECTION OF EXISTING TREES.
- MILL EXIST MOUNTABLE CURB AND CONSTRUCT BARRIER CURB DOWELED SD-205 (100 mm REVEAL).
- REMOVE EXISTING CURB AND CONSTRUCT MODIFIED BARRIER CURB SD-203B (100 mm REVEAL).
- CONSTRUCT 75 mm LIP CURB SD-202B.
- OVERLAY EXISTING CURB AND APPROACH WITH ASPHALT TO LIMITS SHOWN.
- REGRADE EXISTING PAVING STONES.
- REMOVE MOUNTABLE CURB AND GUTTER FRAME AND COVER AP-015, AP-016, AND INSTALL BARRIER CURB FRAME AND COVER AP-011, AP-012. ADJUST TO GRADE. COMPLETE CATCH BASIN/CATCH PIT CURB ISOLATIONS IN ACCORDANCE WITH SD-220E.
- ADJUST MANHOLE AND CATCH BASIN RIMS TO NEW GRADES.
- ADJUST WATER VALVES AND CURB STOPS TO NEW GRADES.
- REMOVE EXISTING STREET LIGHT POLE AND BASE.
- INSTALL NEW STREET LIGHT BASE AND POLE.
- CB AND CP LEADS TO BE INSTALLED TO INVERT ELEVATIONS AS SHOWN. ALL CB AND CP LEADS TO BE INSTALLED AT MIN 2.0% SLOPE AND AS DIRECTED BY CONTRACT ADMINISTRATOR.
- LIMITS OF BOULEVARD GRADING TO BE FINALIZED IN THE FIELD BY THE CONTRACT ADMINISTRATOR.
- LAMP STANDARDS, HYDRO POLES AND ANCHORS THAT REQUIRE TEMPORARY SUPPORT, REMOVAL OR REPLACEMENT, TO BE DONE AT THE EXPENSE OF THE CONTRACTOR, AS NECESSARY. REFER TO SPECIFICATION E30-WORKING AROUND MANITOBA HYDRO POLES.
- ALL DIMENSIONS ARE TO BACK OF CURB.



METRIC

WHOLE NUMBERS INDICATE MILLIMETRES
DECIMAL NUMBERS INDICATE METRES

WARNING

- IF POWER EQUIPMENT OR EXPLOSIVES ARE TO BE USED FOR EXCAVATION ON THIS PROJECT THE CONTRACTOR MUST:
- NOTIFY THE GAS COMPANY OF THE PROPOSED LOCATION OF EXCAVATION.
 - TAKE PRECAUTION TO AVOID DAMAGE TO GAS COMPANY INSTALLATIONS SEE PROVINCIAL REGULATION 210/72 FOR DETAILS.
 - OBTAIN EXCAVATION PERMITS PRIOR TO CONSTRUCTION.

**ENGINEERS
GEOSCIENTISTS**
MANITOBA
Certificate of Authorization
Tetra Tech Canada Inc.
No. 6499

	HYDRANT		CONCRETE		150 WWS	WATERMAIN	150 WWS	
	VALVE		ASPHALT		300 LDS	LAND DRAINAGE SEWER	300 LDS	
	MANHOLE		SIDEWALK		250 WWS	WASTE WATER SEWER	250 WWS	
	CATCH BASIN		PAVING STONES			HYDRANT		
	CATCH PIT		PAVEMENT REPAIR FABRIC			VALVE		
	WATERMAIN		PARTIAL DEPTH REPAIR			Q PROFILE		
	300 LDS LAND DRAINAGE SEWER		PROPERTY LINE			NORTH/WEST GUTTER		
	250 WWS WASTE WATER SEWER		ELEVATION		(232.000)	SOUTH/EAST GUTTER		
	HYDRO		CURB RAMP			NORTH/WEST DITCH		
	M.T.S.		DETECTABLE TILE			SOUTH/EAST DITCH		
	100 GAS							
	EXISTING		EXISTING	LEGEND-PLAN	PROPOSED	EXISTING	LEGEND-PROFILE	PROPOSED

UNDERGROUND STRUCTURES

LOCATION OF UNDERGROUND STRUCTURES AS SHOWN ARE BASED ON THE BEST INFORMATION AVAILABLE. BUT NO GUARANTEE IS GIVEN THAT ALL EXISTING UTILITIES ARE SHOWN OR THAT THE GIVEN LOCATIONS ARE EXACT. CONFIRMATION OF EXISTENCE AND EXACT LOCATION OF ALL SERVICES MUST BE OBTAINED FROM THE INDIVIDUAL UTILITIES BEFORE PROCEEDING WITH CONSTRUCTION.

TETRA TECH

DESIGNED BY: KHL
DRAWN BY: KHL

REVIEWED BY: JT/DL/JNC
APPROVED BY: JNC

SCALE: H = 1:250
V = 1:10

1 ISSUED FOR ADDENDUM 1 26.03.27 JNC
0 ISSUED FOR TENDER 26.03.17 JNC

NO. REVISIONS DATE BY

ORIGINAL DRAWING REVISION "0" SEALED BY J.N. CRANG 26.03.17

THE CITY OF WINNIPEG
PUBLIC WORKS DEPARTMENT

2026 LOCAL STREET RENEWAL PROGRAM
26-R-03

MAJOR REHABILITATION
WATERBURY DRIVE (STA 0+550 TO STA 0+690)
PLAN AND PROFILE

CITY DRAWING NUMBER P-3599-21
SHEET OF 21 28
C021

CONSULTANT DRAWING NO. 704-INF.MB03048-01-C021