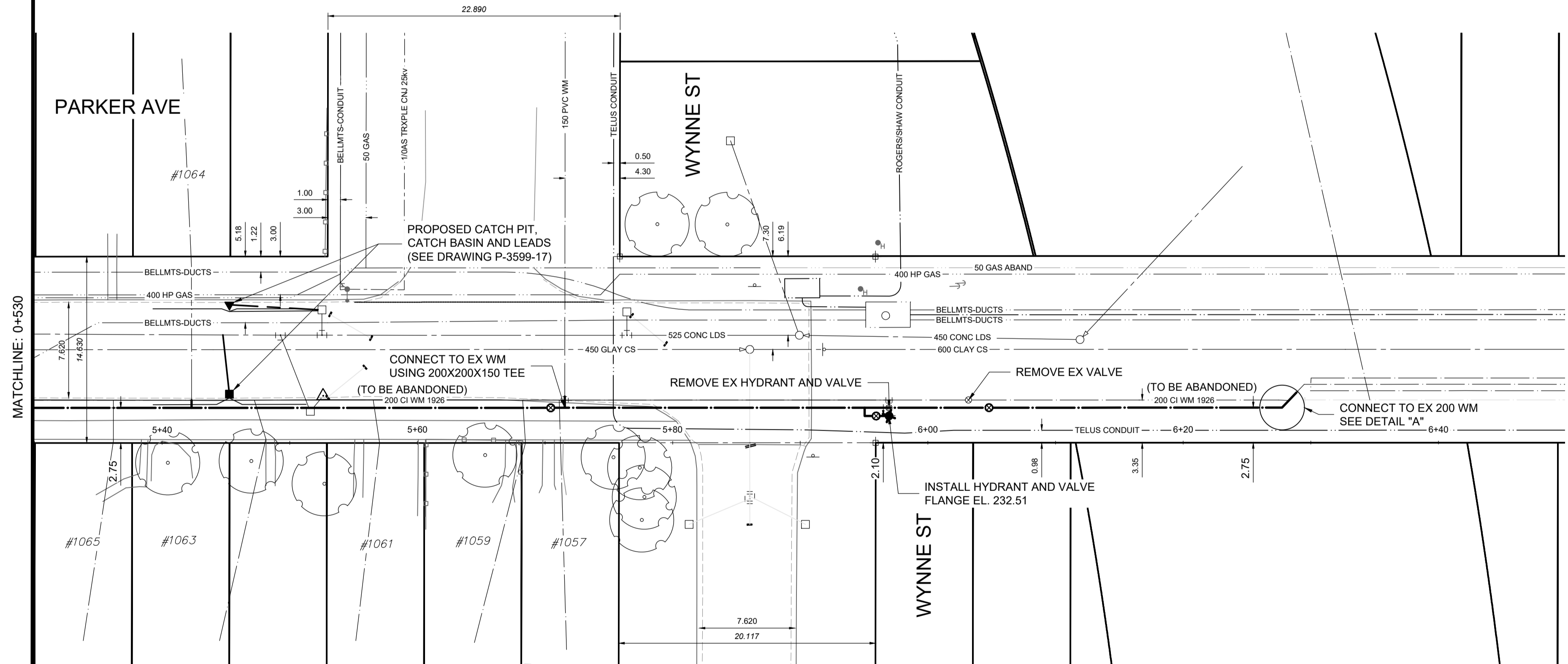
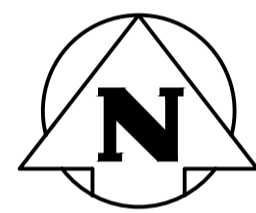


DETAIL "A"
SCALE N.T.S.

CONSTRUCTION NOTES

1. EXPOSE EXISTING WATERMAIN & CONFIRM INVERTS PRIOR TO CONSTRUCTION.
2. LOCATION OF ALL SERVICES TO BE CONFIRMED IN THE FIELD.
3. ALL PIPES AND SERVICE CONNECTIONS TO BE INSTALLED USING TRENCHLESS METHOD, UNLESS OTHERWISE INDICATED.
4. TRENCHES AND EXCAVATION WITHIN 1 METRE OF A PAVED AREA INCLUDING SIDEWALKS SHALL BE CLASS 3 BACKFILL.
5. ALL MATERIAL SHALL CONFORM TO THE CITY OF WINNIPEG STANDARD CONSTRUCTION SPECIFICATIONS.
6. MINIMUM COVER TO TOP OF WATERMAIN SHALL BE 2.5 m.
7. REPLACE ALL EXISTING LEAD OR POLYBUTYLENE SERVICES FROM WATERMAIN TO PL.
8. NOTIFY ALL AFFECTED RESIDENTS AND BUSINESSES 24 HOURS IN ADVANCE OF ANY WATER SHUTDOWNS OR DISRUPTION OF SERVICE.
9. EXPOSE ALL EXISTING UNDERGROUND UTILITIES PRIOR TO CONSTRUCTION TO CONFIRM DEPTH. ANY CONFLICTS WITH PROPOSED WATERMAIN AND EXISTING UNDERGROUND UTILITIES SHALL BE REPORTED TO THE CONTRACT ADMINISTRATOR PRIOR TO INSTALLATION.
10. ANY RESTORATION OF PAVEMENT CUTS MUST ADHERE TO PAVEMENT RESTORATION GUIDELINES IN THE MOST RECENT EDITION OF THE CITY OF WINNIPEG STREET CUTS MANUAL.



WATER SERVICE INFORMATION

ADDRESS	SIZE (mm) MATERIAL (STREET)	SIZE (mm) MATERIAL (PROP.)	SHORT & LONG MEASUREMENT	CORP LOCATION	REMARKS
1057 PARKER AVE	20	20	-	26.1m WMLV	-
1058 PARKER AVE	20	20	0.3m E/ELB	28.7m WMLV	-
1061 PARKER AVE	20	12	2.6m WE/BL #1061	0.5m W CURB STOP	-
1063 PARKER AVE	20	20	3.5m WELL #1061	-	-
1063 PARKER AVE	20	20	1.7m WELL	-	-
1064 PARKER AVE	20	20	124.9m EEL ROCKMAN ST	3m W S/C	-
1064 PARKER AVE	20	20	12.2m EW/LL	-	-
1065 PARKER AVE	20	20	119.0 EEL ROCKMAN ST	OPP S/C	-
1065 PARKER AVE	20	20	3.0m WELL	-	-
1065 PARKER AVE	20	20	112.9m EEL ROCKMAN ST	OPP S/C	-

* SERVICES TO BE RENEWED TO PL. ALL OTHERS TO BE RECONNECTED

NOTES:
CONTRACTOR TO CONTACT THE GEOMATICS BRANCH 5 WORKING DAYS IN ADVANCE OF THE CONSTRUCTION TO PROVIDE THE SURVEY MONUMENT PROTECTION SERVICES REQUIRED.
PHONE: 918-1360
GEOMATICS JOB NUMBER - _____

NOTE: ALL VALVES TO BE INSTALLED CLOCKWISE TO CLOSE (BLACK OPERATING NUT)

NOTE:
CHAINAGES SHOWN ARE ALONG SOUTH PROPERTY LINE OF PARKER STREET.

ENGINEERS GEOSCIENTISTS MANITOBA
Certificate of Authorization
Tetra Tech Canada Inc.
No. 6499

METRIC
WHOLE NUMBERS INDICATE MILLIMETRES
DECIMALIZED NUMBERS INDICATE METRES

EXISTING	LEGEND-PLAN	PROPOSED	EXISTING	LEGEND-PLAN	PROPOSED	EXISTING	LEGEND-PROFILE	PROPOSED
	HYDRANT			CONCRETE			150 WM	
	VALVE			ASPHALT-RECONSTRUCTION			300 LDS	
	MANHOLE			ASPHALT-REHABILITATION			250 WWS	
	CATCH BASIN			SIDEWALK			HYDRANT	
	CATCH PIT			PAVING STONES			VALVE	
	WATERMAIN			STAMPED CONCRETE			WATERMAIN	
	LAND DRAINAGE SEWER			PROPERTY LINE			NORTH/WEST GUTTER	
	WASTE WATER SEWER			ELEVATION			SOUTH/EAST GUTTER	
	HYDRO			CURB RAMP			NORTH/WEST PROPERTY LINE	
	M.T.S.			LS/HP			SOUTH/EAST PROPERTY LINE	
	GAS			DETECTABLE TILE				

TETRA TECH

DESIGNED BY AMH
DRAWN BY GMD
SCALE: H = 1:250
V = 50

REVIEWED BY MAL
APPROVED BY IJM
RELEASED FOR CONSTRUCTION
STREETS PROJECT ENGINEER

DATE 2026.03.25

NO.	ISSUED FOR TENDER	DATE	BY
0	ISSUED FOR TENDER	26.03.25	JNC

THE CITY OF WINNIPEG
PUBLIC WORKS DEPARTMENT

2026 LOCAL STREET RENEWAL PROGRAM
26-R-03

PARKER AVENUE - WATERMAIN RENEWAL
23m WEST OF WYNNE STREET TO
CPR RIGHT-OF-WAY

PROVINCE OF MANITOBA
Member
20797
REGISTERED PROFESSIONAL ENGINEER

CONSULTANT DRAWING NO.
704-INF.MB103048-01-U002

CITY DRAWING NUMBER
D-17502

SHEET OF
2 OF 4

U002

TENDER #203-2026