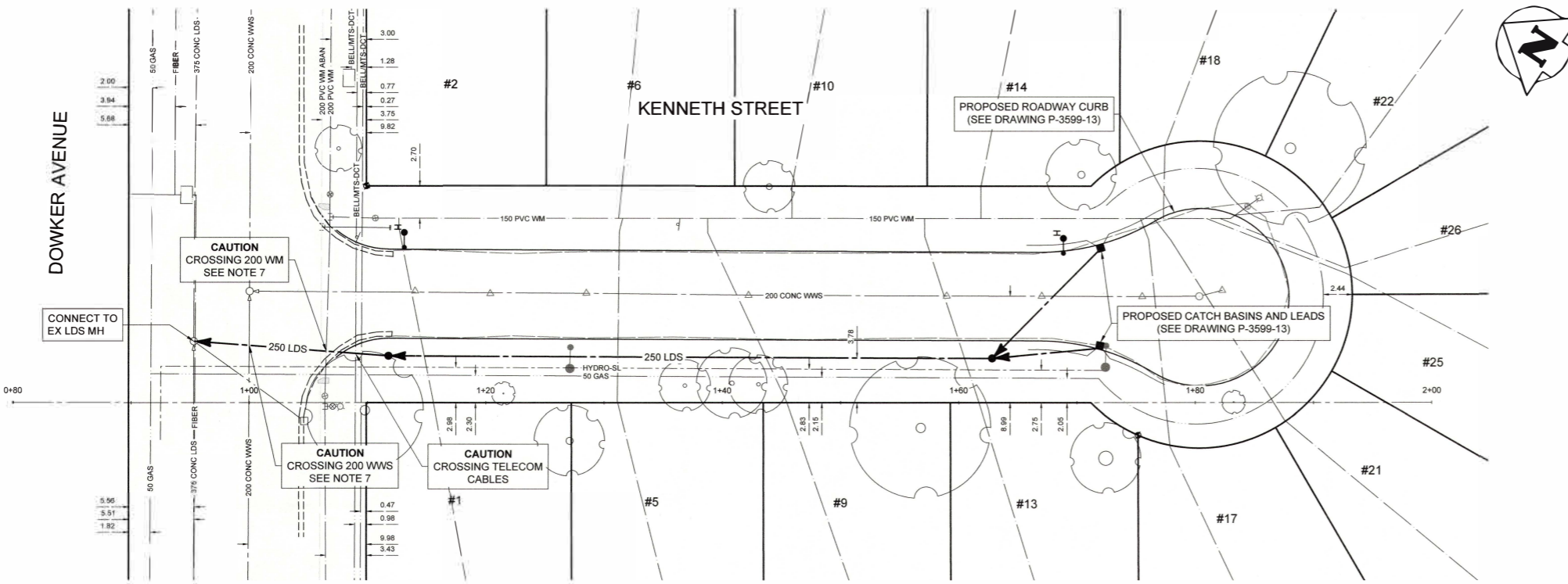


CONSTRUCTION NOTES

1. LOCATION OF UNDERGROUND STRUCTURES AS SHOWN ARE BASED ON THE BEST INFORMATION AVAILABLE. BUT NO GUARANTEE IS GIVEN THAT ALL EXISTING UTILITIES ARE SHOWN OR THAT THE GIVEN LOCATIONS ARE EXACT. CONFIRMATION OF EXISTENCE AND EXACT LOCATION OF ALL SERVICES MUST BE OBTAINED FROM THE INDIVIDUAL UTILITIES BEFORE PROCESSING WITH CONSTRUCTION.
2. ALL CONSTRUCTION AND MATERIALS INCORPORATED IN THE WORK SHALL CONFORM TO THE LATEST EDITION OF THE CITY OF WINNIPEG "STANDARD CONSTRUCTION SPECIFICATIONS", UNLESS NOTED OTHERWISE.
3. ALL SURFACE AND ANY EXISTING UTILITIES DAMAGED OR DISTURBED BY CONSTRUCTION SHALL BE RESTORED TO ITS ORIGINAL CONDITION OR BETTER, OR REPLACED, AT THE CONTRACTOR'S EXPENSE.
4. ALL EXISTING UTILITIES TO HAVE INVERTS VERIFIED PRIOR TO CONSTRUCTION.
5. ALL PIPE UNDER EXISTING AND FUTURE PAVEMENT TO BE INSTALLED USING TRENCHLESS METHODS. WHERE NOT POSSIBLE, OPEN BUT WITH CLASS 2 BACKFILL.
6. ALL BACKFILL UNDER BOULEVARD TO BE CLASS 4 UNLESS OTHERWISE NOTED.
7. FOR WATERMAIN / SEWERMAIN CLEARANCE MINIMUMS REFER TO DRAWING C025.



NOTES:
 CONTRACTOR TO CONTACT THE GEOMATICS BRANCH
 5 WORKING DAYS IN ADVANCE OF THE CONSTRUCTION
 TO PROVIDE THE SURVEY MONUMENT PROTECTION
 SERVICES REQUIRED.
 PHONE: 918-1360
 GEOMATICS JOB NUMBER - _____

NOTE:
 CHAINAGES SHOWN ARE ALONG WEST
 PROPERTY LINE OF KENNETH STREET.

NOTE:
 EXISTING CATCH PIT INLETS ON KENNETH TO
 BE ABANDONED WITH ROADWAY RENEWAL.

METRIC
 WHOLE NUMBERS INDICATE MILLIMETRES
 DECIMALIZED NUMBERS INDICATE METRES

**ENGINEERS
 GEOSCIENTISTS
 MANITOBA**
 Certificate of Authorization
 Tetra Tech Canada Inc.
 No. 6499

TENDER #203-2026

EXISTING	LEGEND-PLAN	PROPOSED	EXISTING	LEGEND-PLAN	PROPOSED	EXISTING	LEGEND-PROFILE	PROPOSED
	HYDRANT			CONCRETE			WATERMAIN	
	VALVE			ASPHALT-RECONSTRUCTION			LAND DRAINAGE SEWER	
	MANHOLE			ASPHALT-REHABILITATION			WASTE WATER SEWER	
	CATCH BASIN			SIDEWALK			HYDRANT	
	CATCH PIT			PAVING STONES			VALVE	
	WATERMAIN			STAMPED CONCRETE			Q PROFILE	
	LAND DRAINAGE SEWER			PROPERTY LINE			NORTHWEST GUTTER	
	WASTE WATER SEWER			ELEVATION			SOUTH/EAST GUTTER	
	HYDRO			CURB RAMP			NORTHWEST PROPERTY LINE	
	M.T.S.			LS/HP			SOUTH/EAST PROPERTY LINE	
	GAS			DETECTABLE TILE				

UNDERGROUND STRUCTURES

LOCATION OF UNDERGROUND STRUCTURES AS SHOWN ARE BASED ON THE BEST INFORMATION AVAILABLE. BUT NO GUARANTEE IS GIVEN THAT ALL EXISTING UTILITIES ARE SHOWN OR THAT THE GIVEN LOCATIONS ARE EXACT. CONFIRMATION OF EXISTENCE AND EXACT LOCATION OF ALL SERVICES MUST BE OBTAINED FROM THE INDIVIDUAL UTILITIES BEFORE PROCEEDING WITH CONSTRUCTION.

B.M. ELEV.	NO	ISSUED FOR TENDER	DATE	BY
	0	ISSUED FOR TENDER	26.03.25	JNC

TETRA TECH

DESIGNED BY	AMH	REVIEWED BY	MAL
DRAWN BY	JM	APPROVED BY	KSS
SCALE	H = 1:250 V = 50	RELEASED FOR CONSTRUCTION	
		STREETS PROJECT ENGINEER	

PROVINCE OF MANITOBA
 SHYMKO
 2008-03-25
 Member
 24532
 REGISTERED PROFESSIONAL ENGINEER

THE CITY OF WINNIPEG
 PUBLIC WORKS DEPARTMENT

2026 LOCAL STREET RENEWAL PROGRAM
 26-R-03

KENNETH STREET - LAND DRAINAGE SEWER
 DOWKER AVENUE TO END

CITY DRAWING NUMBER
 LD-14146
 SHEET 3 OF 4
 U003