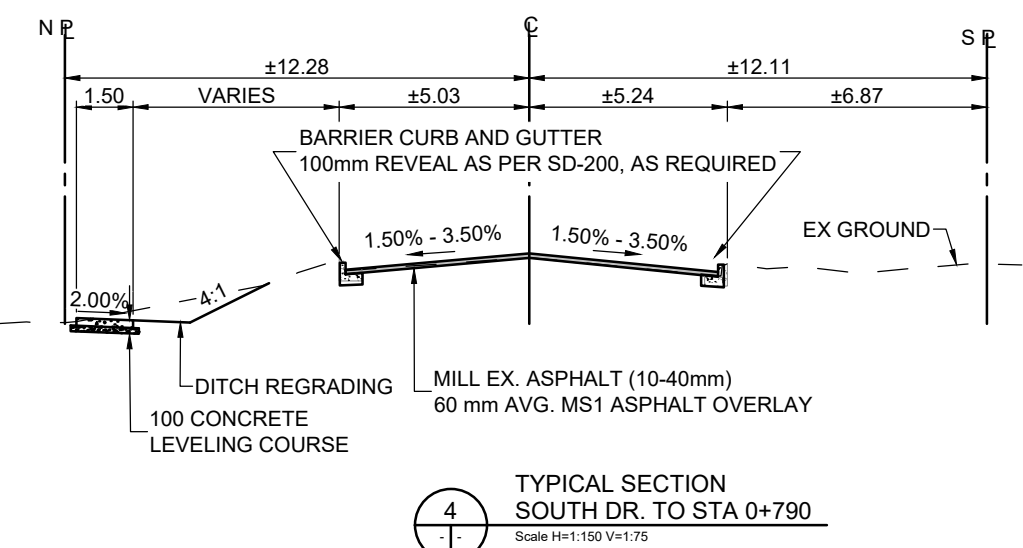
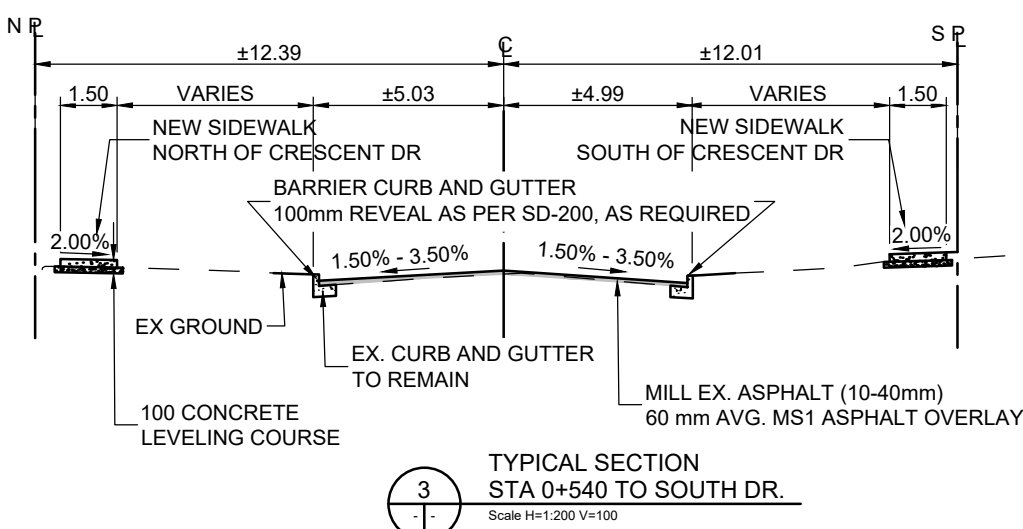
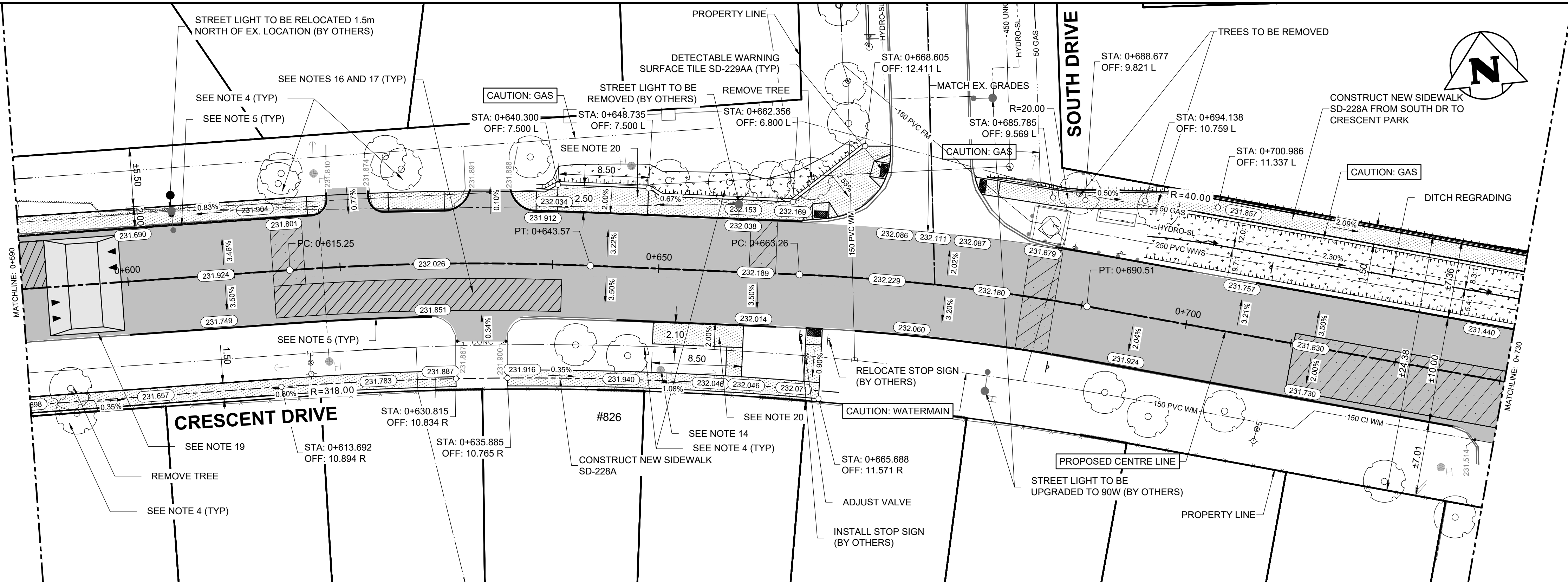


- CONSTRUCTION NOTES:
1. ALL WORK AND MATERIALS TO BE IN ACCORDANCE WITH LATEST REVISION OF THE CITY OF WINNIPEG STANDARD CONSTRUCTION SPECIFICATIONS.
 2. LEGAL PLAN AND UNDERGROUND INFORMATION FROM CITY OF WINNIPEG LBIS.
 3. LOCATION OF EXISTING UTILITIES/SERVICES TO BE CONFIRMED IN THE FIELD BY THE CONTRACTOR.
 4. CONTRACTOR TO TAKE PRECAUTIONARY STEPS TO AVOID DAMAGE FROM CONSTRUCTION ACTIVITIES TO TREES WITHIN THE LIMITS OF CONSTRUCTION. REFER TO SPECIFICATIONS E5 AND E-27.
 5. RENEW BARRIER CURB AND GUTTER SD-200 WHERE SHOWN ON THE DRAWINGS AND AS DIRECTED BY THE CONTRACT ADMINISTRATOR.
 6. CONSTRUCT MODIFIED BARRIER CURB AND GUTTER (100mm REVEAL)
 7. ADJUST MANHOLE, CURB INLETS AND CATCH BASIN RIMS TO NEW GRADES. MANHOLE ISOLATION AS PER SD-220G.
 8. ABANDON CATCH BASIN, CATCH PIT, AND CATCH INLET
 9. SIDEWALK RENEWAL LOCATIONS TO BE FINALIZED IN THE FIELD BY THE CONTRACT ADMINISTRATOR. PROVIDE 13mm SIDEWALK EXPANSION JOINTS AS PER SD-228AA AS LAID OUT BY THE CONTRACT ADMINISTRATOR.
 10. ALL PRIVATE SIDEWALKS TO BE ADJUSTED TO NEW SIDEWALK OR TOP OF CURB ELEVATIONS AS REQUIRED. SIDEWALKS TO BE REPLACED WITH LIKE MATERIALS.
 11. CB LEADS AND CP LEADS TO BE INSTALLED TO INVERT ELEVATIONS AS SHOWN. ALL CB AND CP LEADS TO BE INSTALLED AT MIN 2.0% SLOPE AND AS DIRECTED BY CONTRACT ADMINISTRATOR.
 12. LIMITS OF BOULEVARD GRADING TO BE FINALIZED IN THE FIELD BY THE CONTRACT ADMINISTRATOR.
 13. CONTRACTOR TO CONFIRM LOCATION AND LIMITS OF SEWER REPAIRS AS INDICATED ON THE DRAWINGS BY PERFORMING VIDEO INSPECTION AND REVIEWING WITH THE CONTRACT ADMINISTRATOR PRIOR TO CONSTRUCTION.
 14. LAMP STANDARDS, HYDRO POLES AND ANCHORS THAT REQUIRE TEMPORARY SUPPORT, REMOVAL OR REPLACEMENT, TO BE DONE AT THE EXPENSE OF THE CONTRACTOR, AS NECESSARY. REFER TO SPECIFICATION E30 AND E38.
 15. COMPLETE CATCH BASIN/CATCH PIT CURB ISOLATIONS IN ACCORDANCE WITH SD-220E
 16. COVER PARTIAL AND FULL DEPTH ASPHALT REPAIRS WITH PAVEMENT REPAIR FABRIC EXTENDING 150mm AROUND PERIMETER OF REPAIR AS PER E13.
 17. CONSTRUCT PARTIAL/FULL DEPTH ASPHALT PAVEMENT REPAIR AS DETAILED IN SECTION 2
 18. ADJUST PRECAST SIDEWALK BLOCKS AS DIRECTED BY THE CA.
 19. CONSTRUCT SPEED TABLES AS PER DETAIL IN DWG 025 AND E34.
 20. UPGRADE TRANSIT STOP.
 21. ALL DIMENSIONS ARE TO BACK OF CURB.



METRIC

WHOLE NUMBERS INDICATE MILLIMETRES
DECIMALIZED NUMBERS INDICATE METRES

**ENGINEERS
GEO-SCIENTISTS**
MANITOBA
Certificate of Authorization
Tetra Tech Canada Inc.
No. 6499

	HYDRANT		VALVE		ASPHALT		150 WWS		WATERMAIN
	MANHOLE		CATCH BASIN		PAVING STONES		300 LBS		LAND DRAINAGE SEWER
	CATCH PIT		WATERMAIN		PARTIAL DEPTH REPAIR		250 WWS		HYDRO
	150 WM		300 LBS		FULL DEPTH REPAIR		PROPERTY LINE		NORTH/WEST GUTTER
	250 WWS		250 WWS		ELEVATION		232.000		SOUTH/EAST GUTTER
	HYDRO		HYDRO		CURB RAMP		(232.000)		NORTH/WEST DITCH
	M.T.S.		M.T.S.		DETECTABLE TILE				SOUTH/EAST DITCH
	100 GAS		100 GAS						
EXISTING	LEGEND—PLAN	PROPOSED	EXISTING	LEGEND—PLAN	PROPOSED	EXISTING	LEGEND—PROFILE	PROPOSED	