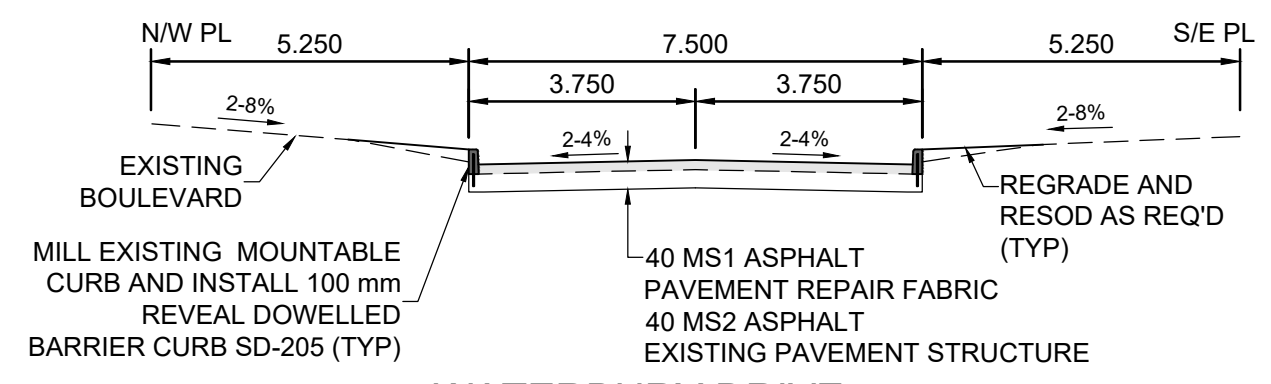


- CONSTRUCTION NOTES:**
1. ALL WORK AND MATERIALS TO BE IN ACCORDANCE WITH LATEST REVISION OF THE CITY OF WINNIPEG STANDARD CONSTRUCTION SPECIFICATIONS.
 2. LEGAL PLAN AND UNDERGROUND INFORMATION FROM CITY OF WINNIPEG LBIS.
 3. LOCATION OF EXISTING UTILITIES/SERVICES TO BE CONFIRMED IN THE FIELD BY THE CONTRACTOR.
 4. CONTRACTOR TO TAKE PRECAUTIONARY STEPS TO AVOID DAMAGE FROM CONSTRUCTION ACTIVITIES TO TREES WITHIN THE LIMITS OF CONSTRUCTION. REFER TO SPECIFICATION E5-PROTECTION OF EXISTING TREES.
 5. MILL EXIST MOUNTABLE CURB AND CONSTRUCT BARRIER CURB DOWELED SD-205 (100 mm REVEAL).
 6. REMOVE EXISTING CURB AND CONSTRUCT MODIFIED BARRIER CURB SD-203B (100 mm REVEAL).
 7. CONSTRUCT 75 mm LIP CURB SD-202B.
 8. OVERLAY EXISTING CURB AND APPROACH WITH ASPHALT TO LIMITS SHOWN.
 9. REGRADE EXISTING PAVING STONES.
 10. REMOVE MOUNTABLE CURB AND GUTTER FRAME AND COVER AP-015, AP-016, AND INSTALL BARRIER CURB FRAME AND COVER AP-011, AP-012. ADJUST TO GRADE. COMPLETE CATCH BASIN/CATCH PIT CURB ISOLATIONS IN ACCORDANCE WITH SD-220E.
 11. ADJUST MANHOLE AND CATCH BASIN RIMS TO NEW GRADES.
 12. ADJUST WATER VALVES AND CURB STOPS TO NEW GRADES.
 13. REMOVE EXISTING STREET LIGHT POLE AND BASE.
 14. INSTALL NEW STREET LIGHT BASE AND POLE.
 15. CB AND CP LEADS TO BE INSTALLED TO INVERT ELEVATIONS AS SHOWN. ALL CB AND CP LEADS TO BE INSTALLED AT MIN 2.0% SLOPE AND AS DIRECTED BY CONTRACT ADMINISTRATOR.
 16. LIMITS OF BOULEVARD GRADING TO BE FINALIZED IN THE FIELD BY THE CONTRACT ADMINISTRATOR.
 17. LAMP STANDARDS, HYDRO POLES AND ANCHORS THAT REQUIRE TEMPORARY SUPPORT, REMOVAL OR REPLACEMENT, TO BE DONE AT THE EXPENSE OF THE CONTRACTOR, AS NECESSARY. REFER TO SPECIFICATION E30-WORKING AROUND MANITOBA HYDRO POLES.
 18. ALL DIMENSIONS ARE TO BACK OF CURB.



**WATERBURY DRIVE
TYPICAL PAVEMENT SECTION
MAJOR REHABILITATION**
SCALE: NTS

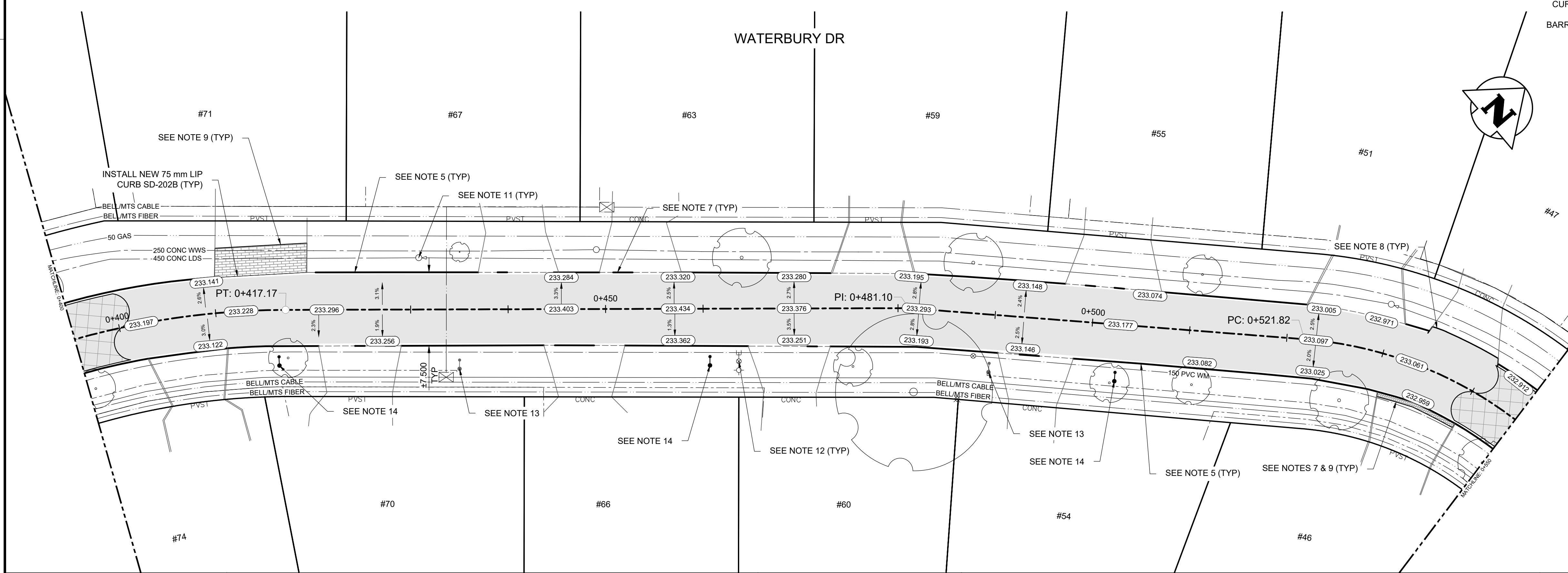
METRIC

WHOLE NUMBERS INDICATE MILLIMETRES
DECIMALIZED NUMBERS INDICATE METRES

WARNING

IF POWER EQUIPMENT OR EXPLOSIVES ARE TO BE USED FOR EXCAVATION ON THIS PROJECT THE CONTRACTOR MUST:

1. NOTIFY THE GAS COMPANY OF THE PROPOSED LOCATION OF EXCAVATION.
2. TAKE PRECAUTION TO AVOID DAMAGE TO GAS COMPANY INSTALLATIONS SEE PROVINCIAL REGULATION 210/72 FOR DETAILS.
3. OBTAIN EXCAVATION PERMITS PRIOR TO CONSTRUCTION.



EXISTING	LEGEND-PLAN	PROPOSED	EXISTING	LEGEND-PLAN	PROPOSED	EXISTING	LEGEND-PROFILE	PROPOSED
	HYDRANT			CONCRETE			WATERMAIN	
	VALVE			ASPHALT			LAND DRAINAGE SEWER	
	MANHOLE			SIDEWALK			WASTE WATER SEWER	
	CATCH BASIN			PAVING STONES			HYDRANT	
	CATCH PIT			PAVEMENT REPAIR FABRIC			VALVE	
	WATERMAIN			PARTIAL DEPTH REPAIR			Q PROFILE	
	300 LDS			PROPERTY LINE			NORTH/WEST GUTTER	
	250 WWS			ELEVATION			SOUTH/EAST GUTTER	
	HYDRO			CURB RAMP			NORTH/WEST DITCH	
	M.T.S.			DETECTABLE TILE			SOUTH/EAST DITCH	
	100 GAS							

EXISTING	LEGEND-PLAN	PROPOSED	EXISTING	LEGEND-PROFILE	PROPOSED
	HYDRANT			CONCRETE	
	VALVE			ASPHALT	
	MANHOLE			SIDEWALK	
	CATCH BASIN			PAVING STONES	
	CATCH PIT			PAVEMENT REPAIR FABRIC	
	WATERMAIN			PARTIAL DEPTH REPAIR	
	300 LDS			PROPERTY LINE	
	250 WWS			ELEVATION	
	HYDRO			CURB RAMP	
	M.T.S.			DETECTABLE TILE	
	100 GAS				

DESIGNED BY	KHL
REVIEWED BY	JT/DL/JNC
DRAWN BY	KHL
APPROVED BY	JNC
SCALE:	H = 1:250 V = 1:10
RELEASED FOR CONSTRUCTION	xx
STREETS PROJECT ENGINEER	
DATE	26.03.17

CONSULTANT DRAWING NO.	704-INF.MBI03048-01-C020
------------------------	--------------------------

THE CITY OF WINNIPEG PUBLIC WORKS DEPARTMENT	
2026 LOCAL STREET RENEWAL PROGRAM 26-R-03	CITY DRAWING NUMBER P-3599-20
MAJOR REHABILITATION WATERBURY DRIVE (STA 0+400 TO STA 0+550) PLAN AND PROFILE	SHEET OF 20 25
	C020